

save  
energy  
with  
Lutron



 **LUTRON**

[www.lutron.com](http://www.lutron.com)

Lutron Electronics Co., Inc.  
7200 Suter Road  
Coopersburg, PA 18036-1299

Technical Support Center 1.800.523.9466  
Customer Service 1.888.LUTRON1

© 05/2008 Lutron Electronics Co., Inc. | P/N 367-1332 REV B



VIERTI™

single-touch dimmer

 **LUTRON**



## Introducing Vierti™

**Vierti ('ver-tē) combines minimalist style and intuitive functionality in a remarkably innovative dimmer.**

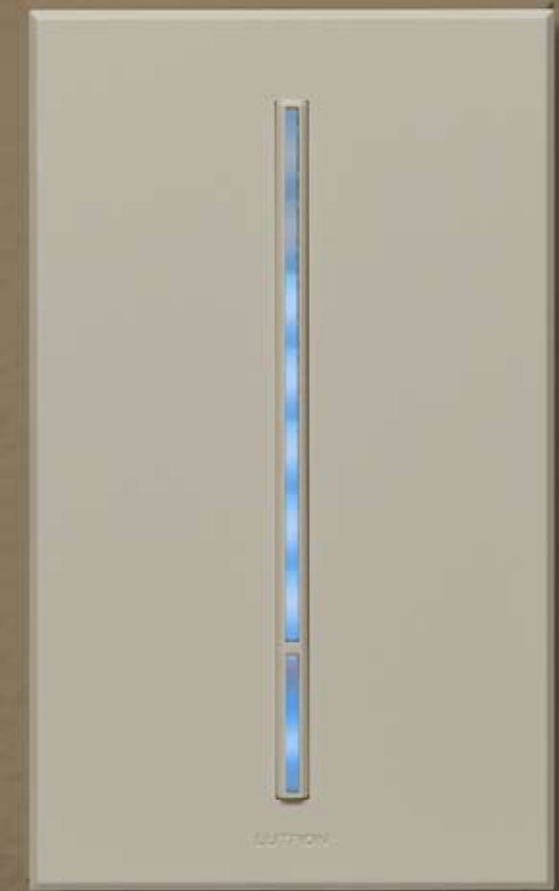
Lutron set out to create a lighting control that was easy to use, on the cutting edge of design, and maintained Lutron's high standard of quality. The result? Vierti. With a sleek aesthetic, Vierti redefines the style and function found in today's lighting controls.

Vierti's distinct, polished look complements both commercial and residential applications. In addition to a sleek aesthetic, Vierti performs like no other lighting control. The perfect light level can be set with a single touch or a slide of the finger. The LEDs in the illuminated control bar brighten when touched, filling the bar to show the light level selected.

Discover Vierti's benefits – style, versatility, customization – and experience a new dimension in lighting control.

For more information visit [www.lutron.com/vierti](http://www.lutron.com/vierti)





## style

Vierti™ combines both classic and contemporary elements for a sophisticated appearance that works with any application. Its clean lines and smooth texture blend with furnishings and architecture to create a minimalist presence, adding the finishing touch to a space.

The Vierti dimmer and wallplate shown here in a light almond matte finish is an understated, yet refined addition to any room. The LEDs are glowing at their brightest intensity, indicating they're "in use."



## versatility

Whether you are designing a commercial or residential space, Vierti's minimalist style blends perfectly with any room's decor. Vierti's product line, which includes dimmers, switches, and coordinating accessories, can accommodate most common load types making it even easier to specify a whole-project solution.

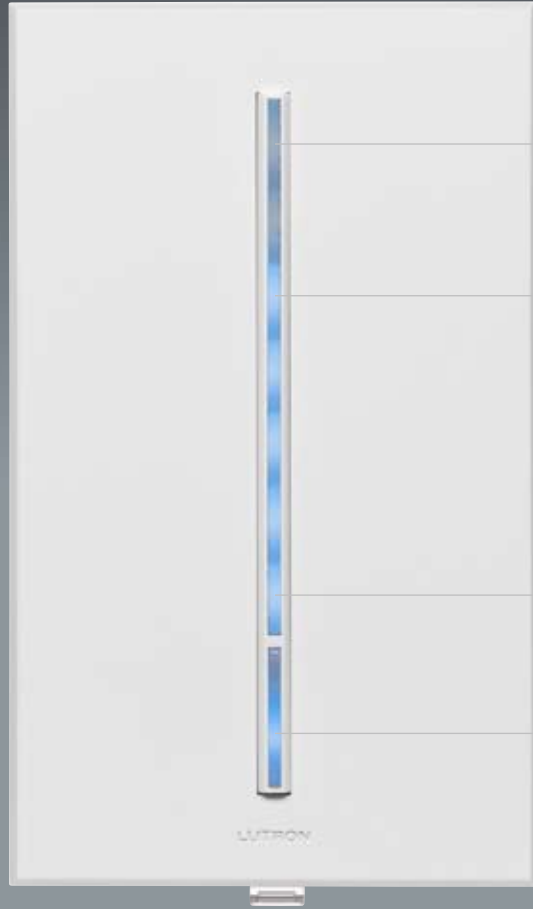
Accentuate a room's contemporary design with a Vierti dimmer and wallplate in a stain nickel metal finish. Here, the LEDs are glowing softly, having dimmed from "in use" to "at rest."



## customization

Vierti™ offers an unprecedented level of choice and flexibility. With LEDs available in blue, green, or white, and over 21 architectural style wallplate colors and finishes, it's possible to specify a look to complement just about any commercial or residential décor.

A Vierti dimmer and wallplate in black is a tasteful room accessory. Here, the soft amber LED indicates that the lights are off.



touch for maximum brightness

LED's indicate light level  
(shown at 75%)

touch for minimum brightness

touch for on and off

**Full-featured multi-location dimming**

Change and determine the light level from any location in the circuit.

**Precise lighting control**

Vierti's illuminated control bar is longer than on most standard dimmers. This bar provides better resolution between minimum and maximum brightness, making it easier to set the perfect light level with a single touch.

**Audible feedback**

When touched, audible feedback confirms that touch.

**Locator light**

LEDs act as a subtle locator light and can be adjusted to the preferred level of brightness.

**Advanced programming**

Vierti comes with advanced features including **adjustable high end for energy savings, light level fade times** and **LED intensity**. For more information on advanced features please visit [www.lutron.com/vierti](http://www.lutron.com/vierti).

Vierti's adaptive LEDs brighten when touched to indicate the dimmer is responding, then glow softly when at rest. While at rest the user can still easily identify the room's light level, without the LEDs being fully illuminated.



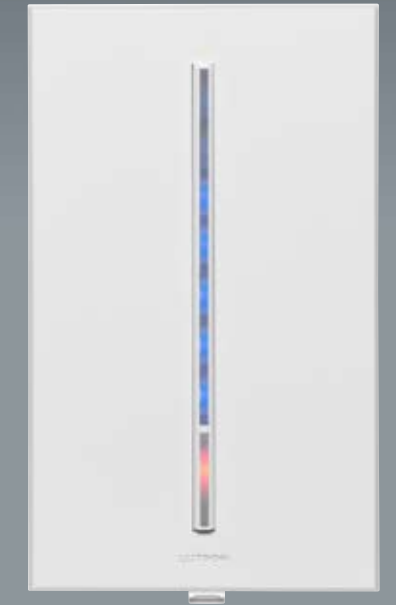
**In use**

When touched, the LEDs glow at their brightest intensity.



**At rest**

The LEDs dim after the light level has been set.



**Off**

When the lights are turned off the LEDs act as a subtle locator light. The amber LED indicates the lights have been turned off.

dimmers and coordinating accessories



dimmers  
companion dimmers



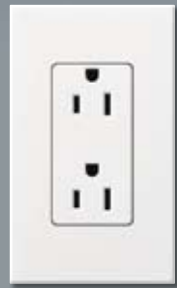
switches  
companion switches



1-4 gang Vierti opening wallplates



For different wallplate configurations call Lutron customer service at 1.888.LUTRON1.



receptacles



GFCI receptacles



phone jacks



cable jacks



1-4 gang designer opening architectural wallplates



LED color options



blue (B)



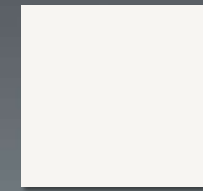
green (G)



white (W)

LED modules not sold separately

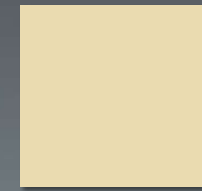
matte finish



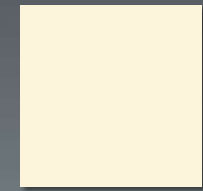
white (WH)



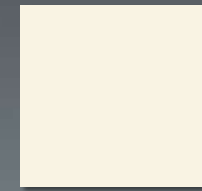
beige (BE)



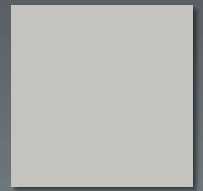
ivory (IV)



almond (AL)



light almond (LA)



gray (GR)



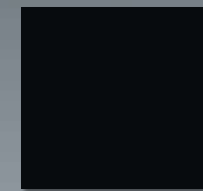
taupe (TP)



sienna (SI)



brown (BR)



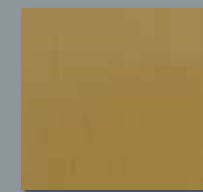
black (BL)



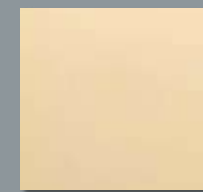
Custom color-matching available. Call Lutron customer service at 1.888.LUTRON1.

metal finish

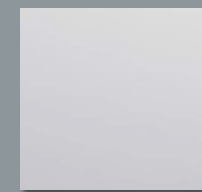
standard finish color palette



satin brass (SB)



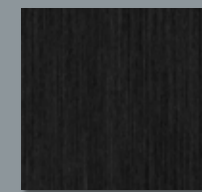
bright brass (BB)



bright chrome (BC)



clear anodized (CLA)

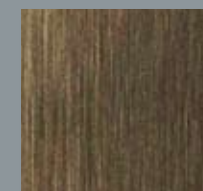


black anodized (BLA)

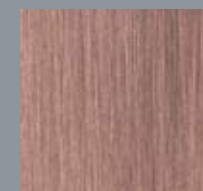


brass anodized (BRA)

special metal finish color palette



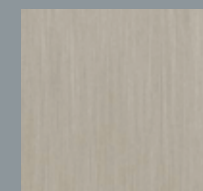
antique brass (QB)



antique bronze (QZ)



satin chrome (SC)



satin nickel (SN)

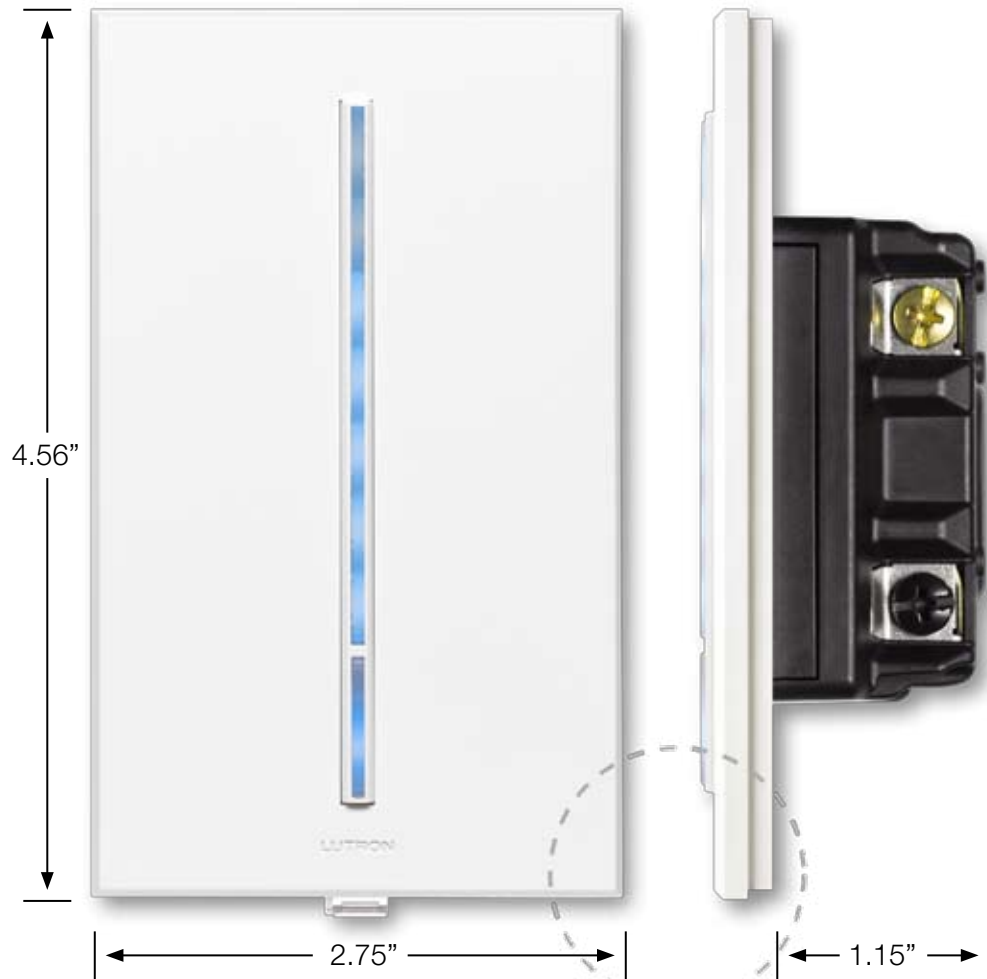


bright nickel (BN)

Metal finishes available for wallplates only.

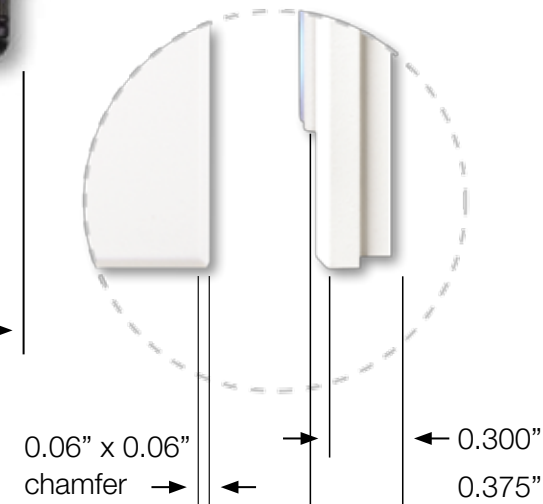
Please note the swatches are representative of color only, not finishes. Due to variations in the printing process color swatches printed may not be exact. When matching colors please request a color sample from Lutron customer service at 1.888.LUTRON1.

architectural style



features

Screwless wallplates available with matte and metal finishes. Square corners, beveled edges.



quality

- Lightning strike surge protection – protect your dimmer from power surges during a storm or from within the building
- Electrostatic discharge protection – designed to withstand the static discharges (static shocks) common in a dry climate
- Air gap switch – easy to use Front Accessible Service Switch (FASS) to completely disconnect power from the load for service
- Square law dimming – LED position matches the perceived light level
- Power-failure memory – lights always return to the previous state when power is restored
- Precise color consistency – color variations are monitored to ensure that all visible plastic parts have a consistent color ( $\Delta E \leq 1.0$ )
- Smooth and continuous dimming – flicker free continuous lighting control

how to order your product

<b>matte finishes – select the model number, select the LED color, select the wallplate color</b>			
model	LED color	product color	finished model number
<b>VT-600M-</b>	<b>B</b>	<b>WH</b>	<b>VT-600M-B-WH</b>
<b>metal finishes – select the product model number (we suggest black) and metal finish wallplate</b>			
model	LED color	product color	finished model number
<b>VT-600M- VTW-1-</b>	<b>B</b>	<b>BL SN</b>	<b>VT-600M-B-BL VTW-1-SN</b>

websites

- Vierti family [www.lutron.com/vierti](http://www.lutron.com/vierti)
- technical information [www.lutron.com/technicalinfo](http://www.lutron.com/technicalinfo)
- CAD file downloads [www.lutron.com/technicalinfo/cad](http://www.lutron.com/technicalinfo/cad)

**incandescent/magnetic low voltage dimmer**

single pole	600 W/VA	<b>VT-600-</b>	<input type="checkbox"/>	<input type="checkbox"/>
single pole/ multi-location	600 W/VA	<b>VT-600M-</b>	<input type="checkbox"/>	<input type="checkbox"/>
single pole/ multi-location	1000 W/VA	<b>VT-1000M-</b>	<input type="checkbox"/>	<input type="checkbox"/>

**electronic low voltage dimmer**

single pole/ multi-location	600 W	<b>VTELV-600M-</b>	<input type="checkbox"/>	<input type="checkbox"/>
--------------------------------	-------	--------------------	--------------------------	--------------------------

**fluorescent (Hi-lume®, Compact SE™, Eco-10™, and EcoSystem™ ballasts)**

single pole/ multi-location	120/277 V / 6 A	<b>VTF-6AM-</b>	<input type="checkbox"/>	<input type="checkbox"/>
--------------------------------	-----------------	-----------------	--------------------------	--------------------------

**electronic switch**

incandescent, MLV, ELV, non-dim fluorescent ballasts, general purpose fans:

single pole/ multi-location	6 A light/3 A fan	<b>VT-S6AM-</b>	<input type="checkbox"/>	<input type="checkbox"/>
--------------------------------	-------------------	-----------------	--------------------------	--------------------------

**companion controls**

provides multi-location dimming/switching from up to four additional locations:

multi-location companion dimmer	<b>VT-AD-</b>	<input type="checkbox"/>	<input type="checkbox"/>
multi-location companion switch	<b>VT-AS-</b>	<input type="checkbox"/>	<input type="checkbox"/>

**Vierti opening wallplates**

single-gang	<b>VTW-1-</b>	<input type="checkbox"/>
two-gang	<b>VTW-2-</b>	<input type="checkbox"/>
three-gang	<b>VTW-3-</b>	<input type="checkbox"/>
four-gang	<b>VTW-4-</b>	<input type="checkbox"/>

**Custom wallplates available. Call Lutron customer service at 1.888.LUTRON1.**