

71" CAST IRON DOUBLE SLIPPER TUB

Cat. No.
CTDSN



L: 71"
W: 30 1/2"
H: 30" (from floor to top of tub)
22" (from floor to lowest tub rim)
18 1/2" (from bottom of tub to top center of tub)
26 3/4" (from bottom of tub to top of tub)

Depth to Overflow: 14 1/4"

Toe to Toe Measurements:

35" Front to back
20-1/2" Side to side

Meets or exceeds the following specifications: A112-19-1M 1994.

The following is recommended for CTDSN tubs without faucet holes:

- Faucets: part #4602
- Rigid, freestanding supplies: part #4502
- Leg tub drain: part #5599

Gallon Capacity: 43 1/2
Shipping Weight: 544 lbs.
Empty Weight: 364 lbs.
Filled Weight: 728 lbs

Features:

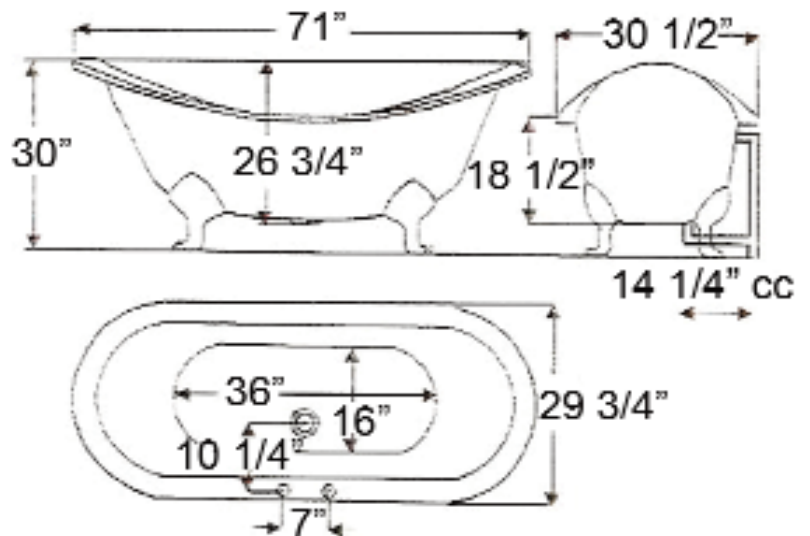
- ▶ Inside finish is white enamel
- ▶ Lion feet available in 6 finishes or unfinished
- ▶ Tub exterior is white
- ▶ No faucet holes
- ▶ Non-skid strips
- ▶ Feet are attached and leveled before shipment
- ▶ Tub is thoroughly inspected before shipment

Foot Finishes:

- BP Polished Brass
- SN Brushed Nickel
- CP Polished Chrome
- WH White
- PN Polished Nickel
- ORB Oil-rubbed Bronze



Custom Colors Available (inside of tub is always white enamel):
Painted bathtubs are considered "special order" and are not returnable
\$160 Bisque or Black \$250 Designer Color



Dimensions of fixture are nominal and may vary within the range of tolerances established by ANSI Standard A112.19.2. Dimensions and specifications subject to change without notice.

TUB WALL MOUNT FILLER WITH HANDSHOWER

Cat. No.
4602



Features:

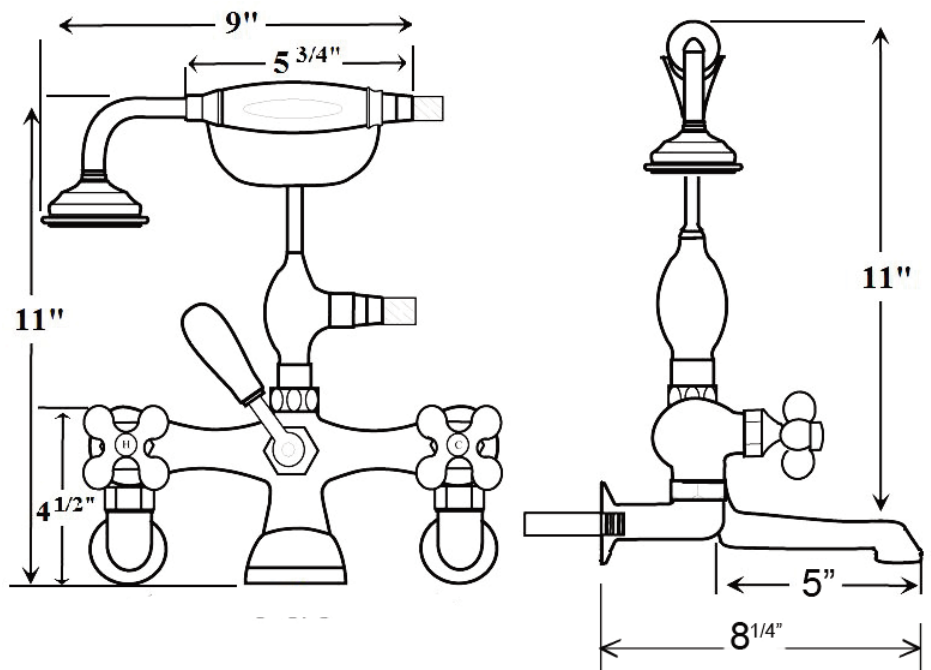
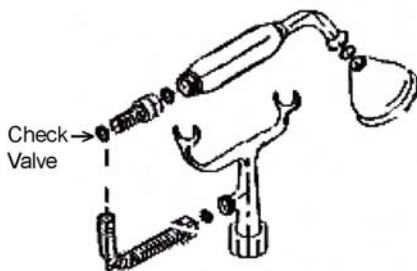
- ▶ Brass Construction
- ▶ Elephant Spout
- ▶ Telephone Style Hand Shower with Cradle and Hose
- ▶ Handshower includes Backflow Preventer
- ▶ Swivel Mounts adjust centers from 3" to 12"
- ▶ For Tub Wall Mount Installation
- ▶ Spout Length is 5"
- ▶ 1/4" turn ceramic disc cartridges
- ▶ Flow rate for spout is 3.70 GPM @ 80 PSI
- ▶ Flow rate for handshower is 2.5 GPM
- ▶ To be used with Double Offset Bath Supplies, Part #5576
- ▶ This Faucet can also be used with Rigid Freestanding Supplies, Part #4502 with Adjustable Swivel Mounts removed



Adjustable Swivel Mounts

Finishes:

- BP Polished Brass
- CP Polished Chrome
- SN Brushed Nickel
- PN Polished Nickel
- ORB Oil Rubbed Bronze



Dimensions are nominal and may vary. Dimensions and specifications subject to change without notice.

FREESTANDING BATH SUPPLIES

Cat. No.
4502-PL



Features:

- ▶ 5 Inch Shaft Included
- ▶ Stops Included
- ▶ 1/2" Pipe Thread Inlet
- ▶ 3/4" Flare Outlet
- ▶ Wall Support Assemblies Included
- ▶ Porcelain Lever Handles
- ▶ Available in 5 Finishes
- ▶ Should Not Be Used with Faucets That Use Shower Risers and Shower Rods, or with Leg Tubs That Have Factory Drilled Holes.

Finishes:

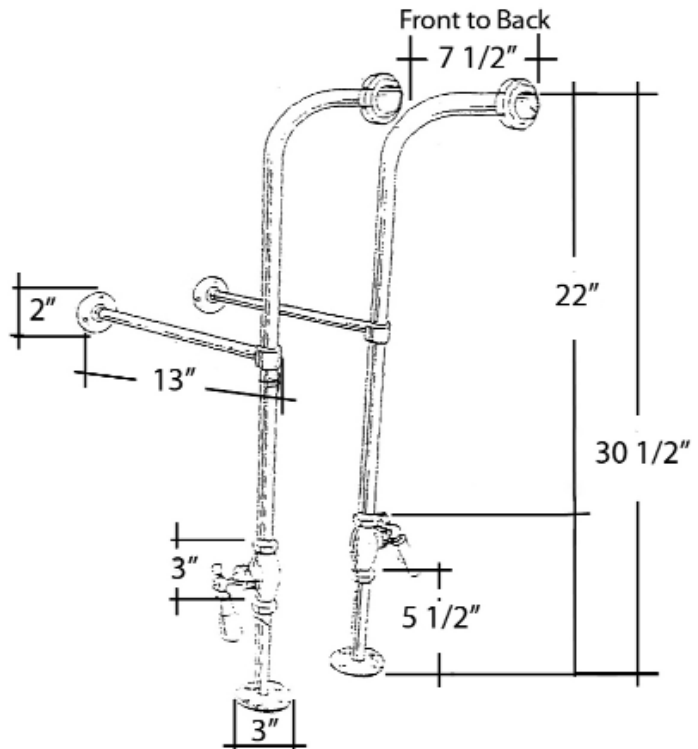
- CP** Polished Chrome
- BP** Polished Brass
- SN** Brushed Nickel
- PN** Polished Nickel
- ORB** Oil Rubbed Bronze

H: 30" (30 1/2" with nut)

OD: 1/2"



Wall Support
Assembly



Dimensions are nominal and may vary. Dimensions and specifications subject to change without notice.

LEG TUB DRAIN

Cat. No.
5599



Escutcheon Height is 1 1/4"

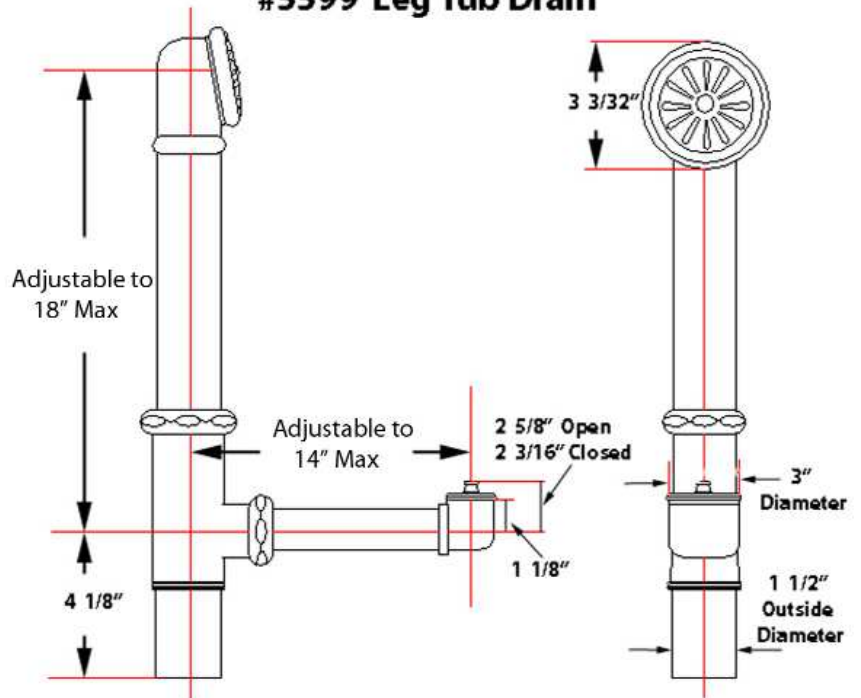
Features:

- ▶ Twist-and-Lift Stopper
- ▶ Includes Deep Escutcheon
- ▶ Available in 5 Finishes

Finishes:

- CP Polished Chrome
- BP Polished Brass
- SN Brushed Nickel
- PN Polished Nickel
- ORB Oil Rubbed Bronze

#5599 Leg Tub Drain



Dimensions and specifications subject to change without notice.