

### ACRYLIC CUSTOM BATH WHIRLPOOL K-1139-CN

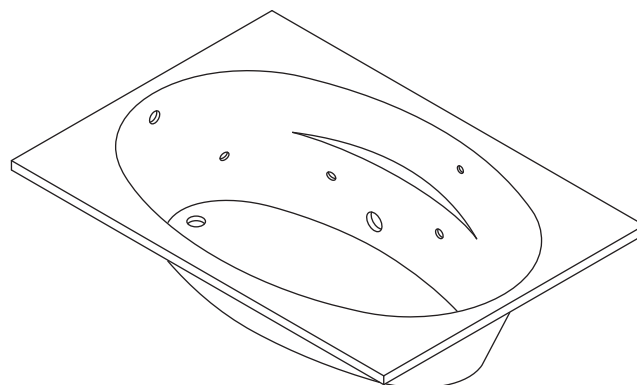
#### Features

- Acrylic
- Drop-in
- Pump with air switch and grounding-type plug-in cord
- 6 individually adjustable ProFlex® hydro-massage jets
- Molded lumbar supports and armrests
- Optional K-9696 whirlpool trim kit in various finishes
- Optional K-1284 separate apron
- 60" (1524 mm) x 36" (914 mm) x 18-1/8" (460 mm)

#### Codes/Standards Applicable

Specified model meets or exceeds the following:

- ASME A112.19.7
- ANSI Z124.1.2
- ASTM E162
- ASTM E662
- UL 1795



#### Colors/Finishes

- 0: White
- Other: Refer to Price Book for additional colors/finishes

#### Accessories

- 0: White
- CP: Polished Chrome
- Other: Refer to Price Book for additional colors/finishes

#### Specified Model

Model	Description	Colors/Finishes	
K-1139-CN	Bath whirlpool, drop-in, custom pump	<input type="checkbox"/> 0	<input type="checkbox"/> Other_____
<b>Recommended Accessories</b>			
K-7213	Cable drain with PVC tubing	<input type="checkbox"/> CP	<input type="checkbox"/> PB
K-7214	Cable drain without PVC tubing	<input type="checkbox"/> CP	<input type="checkbox"/> PB
K-11677	Trip lever drain	<input type="checkbox"/> CP	<input type="checkbox"/> PB
<b>Optional Accessories</b>			
K-1284	Separate apron with removable panel for front access	<input type="checkbox"/> 0	<input type="checkbox"/> Other_____
K-1491	Pillow	<input type="checkbox"/> 0	<input type="checkbox"/> Other_____

#### Product Specification

The acrylic drop-in bath whirlpool shall be 60" (1524 mm) in length, 36" (914 mm) in width, and 18-1/8" (460 mm) in height. Bath whirlpool shall have 6 individually adjustable ProFlex hydro-massage jets, a 1.25 hp pump with air switch and grounding-type plug-in cord. Bath whirlpool shall have molded lumbar supports and armrests. Bath whirlpool shall have an optional K-1284 separate apron, an optional K-1491 removable pillow, an optional K-1601 footstop, and an optional K-9696 jet trim kit. Bath whirlpool shall be Kohler Model K-1139-CN-\_\_\_\_\_.

# PROFLEX® 6036

## Optional Accessories

K-1601	Footstop	<input type="checkbox"/> 0	<input type="checkbox"/> Other_____
K-9696	Jet trim kit (metal finishes)	<input type="checkbox"/> CP	<input type="checkbox"/> PB <input type="checkbox"/> Other_____

## Technical Information

Fixture*:	
Bathing well:	
Basin area	46" (1168 mm) x 15" (381 mm)
Top area	55" (1397 mm) x 25" (635 mm)
To overflow:	
Water depth	14" (356 mm)
Capacity	57 gal (215.8 L)
Weight	55 lbs (24.9 kg)
Drop-in cutout	58-1/2" (1486 mm) x 34-1/4" (876 mm)
* Approximate measurements for comparison only.	

Pump:	Hp	V	Hz	A
1-speed	1.25	120	60	7.5

## Required Electrical Service

Dedicated circuit required, protected with Class A Ground-Fault Circuit-Interrupter (GFCI):

Pump/control 120 V, 15 A, 60 Hz

Locate the outlet behind the whirlpool and within 24" (610 mm) of the pump.

## Installation Notes

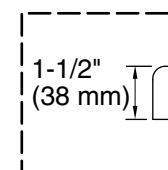
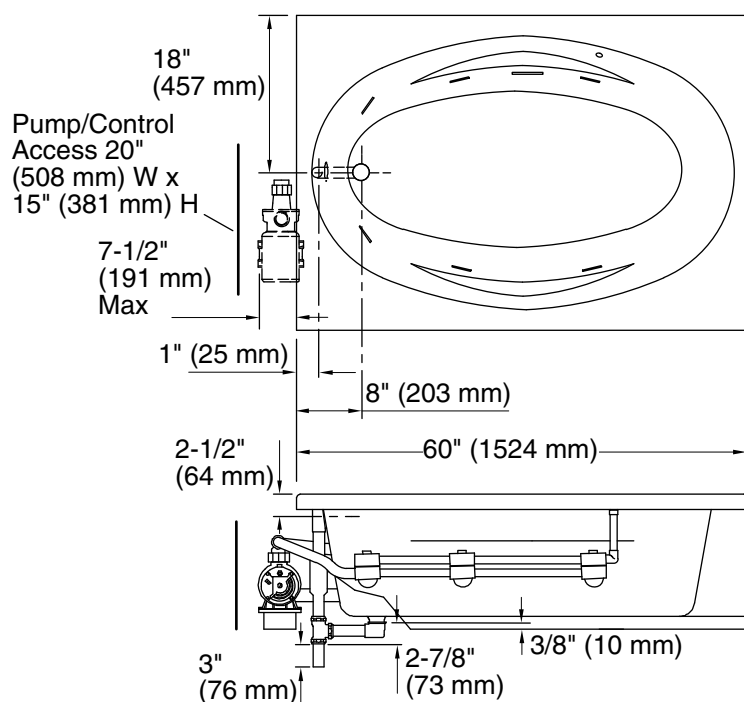
Install this product according to the installation guide.

Floor support under whirlpool must provide for a minimum of 37 lbs/square foot (181 kg/square meter) loading.

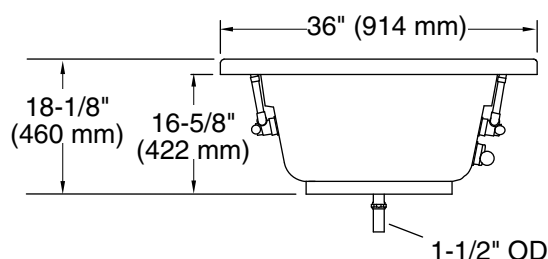
The apron must be installed before the finished floor and wall materials are installed.

Pump must be relocated to custom position at the time of installation. Provide adequate clearance.

No change in measurements if connected with drain illustrated. (K-11677)



**Drop-in Rim Detail**



## Product Diagram