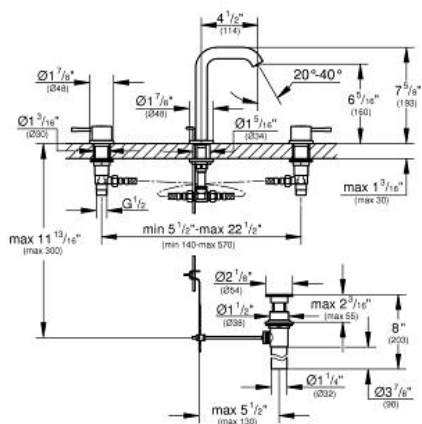


ESSENCE NEW  
Three-hole basin mixer  
M-Size

MODEL # 20297

GROHE America, Inc | 200 North Gary Avenue, Suite G, Roselle, IL 60172  
Phone: +1 (800) 444-7643 | Fax: +1 (800) 225-2778 | us-customerservice@grohe.com

*Pure Freude an Wasser*



**ADA**

**Product Description:**  
Three-hole basin mixer  
M-Size

**Standard Specification:**

- Metal lever
- 1/2" ceramic cartridges (90° turn)
- GROHE StarLight® finish
- GROHE EcoJoy®
- GROHE QuickFix® rapid installation system
- Spout with flow control
- 1 1/4" pop-up waste set
- Pressure resistant flexible connection hoses (between spout and side valves)
- 1/2" x 7/16" union nut

**Applicable Codes & Standards:**

- Energy Policy Act of 1992
- NSF 61
- ASME A112.18.1/CSA B125.1
- US Federal and State material regulations
- EPA WaterSense®
- ICC/ANSI A117.1

**Color:**

- 20297 001 chrome
- 20297 EN1 brushed nickel