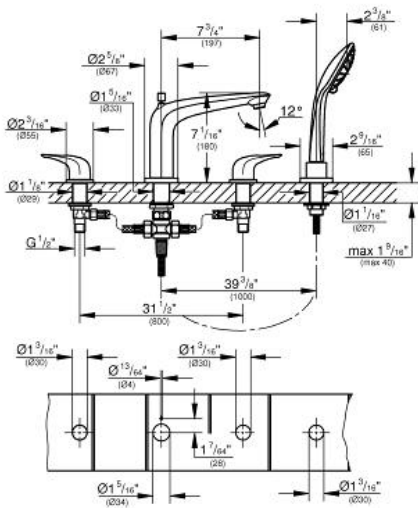


EUROSTYLE
 Four-hole bath combination
 MODEL # 19991

Pure Freude an Wasser



GROHE America, Inc | 200 North Gary Avenue, Suite G, Roselle, IL 60172
 Phone: +1 (800) 444-7643 | Fax: +1 (800) 225-2778 | us-customerservice@grohe.com



Product Description:
 Four-hole bath combination

Standard Specification:

- Metal handles
- 1/2" ceramic cartridge (90° turn)
- **GROHE StarLight®** finish
- Bath spout with flow control and diverter
- 2.5 gpm Euphoria 110 Massage Hand Shower (27 239)
- Stainless Steel Braided Flexible Supplies

Color:

- 19991 003 chrome
- 19991 EN3 brushed nickel