

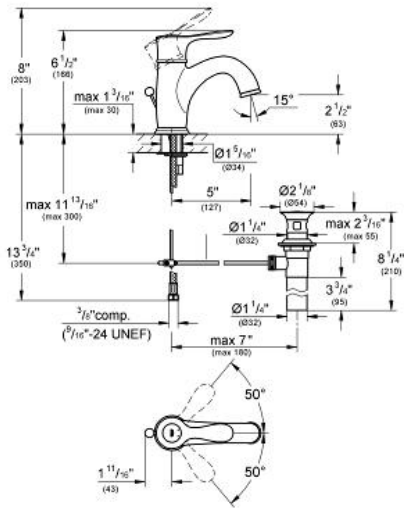
PARKFIELD Lavatory Centerset

MODEL # 23305

Pure Freude an Wasser



GROHE America, Inc | 200 North Gary Avenue, Suite G, Roselle, IL 60172
Phone: +1 (800) 444-7643 | Fax: +1 (800) 225-2778 | us-customerservice@grohe.com



Product Description: Lavatory Centerset

Standard Specification:

- GROHE EcoJoy® technology for less water and perfect flow
- Single hole installation
- Metal lever
- GROHE SilkMove® ceramic cartridge
- GROHE StarLight® finish
- Temperature limiter
- Flow control
- Quick installation system
- Pop-up waste set
- Flexible hose connections
- Max Flow Rate 1.5 gpm (5.7 L/min)

Applicable Codes & Standards:

- Energy Policy Act of 1992
- NSF 61
- ASME A112.18.1/CSA B125.1
- US Federal and State material regulations
- EPA WaterSense®
- ICC/ANSI A117.1

Color:

- 23305 00A chrome
- 23305 000 chrome
- 23305 ENA brushed nickel
- 23305 EN0 brushed nickel

