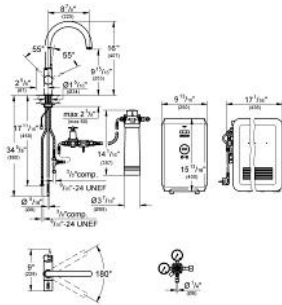


GROHE BLUE® CHILLED & SPARKLING Starter kit

MODEL # 31251

GROHE America, Inc | 200 North Gary Avenue, Suite G, Roselle, IL 60172
Phone: +1 (800) 444-7643 | Fax: +1 (800) 225-2778 | us-customerservice@grohe.com

Pure Freude an Wasser



Product Description: Starter kit

Standard Specification:

Consisting of:

- GROHE Blue® single-lever faucet with filter function
- Single hole installation
- Separate handle for 3 settings of filtered and chilled table water
- Still, medium, sparkling
- 1/2" cartridge
- GROHE Starlight® finish
- GROHE SilkMove® ceramic cartridge
- Adjustable flow rate limiter
- Swivel Spout
- Separate internal water ways for filtered and non-filtered water
- Stainless Steel Braided Flexible Supplies
- 270 Watt cooling unit, 115 V, 60 Hz
- Type of protection IP 21
- CE approved
- GROHE Blue® 600 l filter, filter head with flexible adjustment
- Max Flow Rate 1.75 gpm (6.6 L/min)

Only food and beverage grade or medical grade CO₂ can be used with the Blue C&S systems
Grohe Blue Chilled & Sparkling cannot be used with softened water. Any water hardness measurement below 2.0 grains per gallon (35PPM) prevents carbonation.

Applicable Codes & Standards:

- NSF 61
- ASME A112.18.1/CSA B125.1
- US Federal and State material regulations
- ICC/ANSI A117.1

Color:

- 31251 DC0 chrome
- 31251 001 chrome
- 31251 000 chrome
- 31251 DC1 supersteel

GROHE America, Inc | 200 North Gary Avenue, Suite G, Roselle, IL 60172
Phone: +1 (800) 444-7643 | Fax: +1 (800) 225-2778 | us-customerservice@grohe.com