



PREMIER  
COPPER PRODUCTS

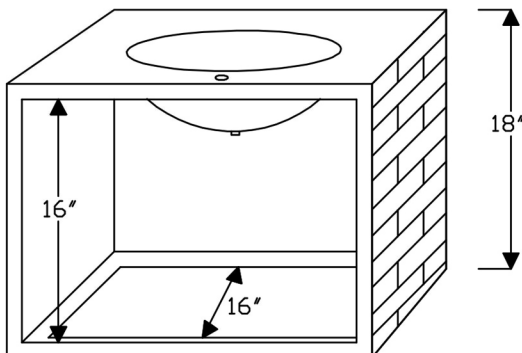
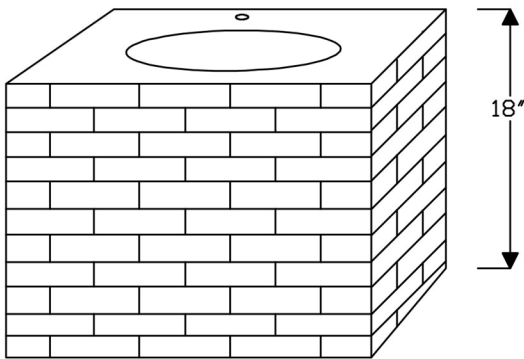
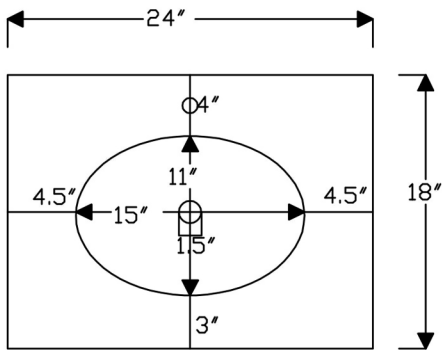
MODEL NUMBER: BSP3\_VADB24181B

DESCRIPTION: Hand Hammered Copper Wall Mount Vanity  
with Tuscan Design Package

PACKAGE INCLUDES THE FOLLOWING ITEMS:

- \* 24" Hand Hammered Copper Wall Mount Vanity with Tuscan Design
- \* Single Handle Bathroom Faucet / ORB Finish (Model# B-SH02ORB)
- \* Non-overflow Teardrop Grid Drain / ORB Finish (Model# D-207ORB)

\* ORB: Oil Rubbed Bronze





PREMIER  
COPPER PRODUCTS

## MODEL NUMBER: BSP3\_VADB24181B

DESCRIPTION: Hand Hammered Copper Wall Mount Vanity  
with Tuscan Design Package

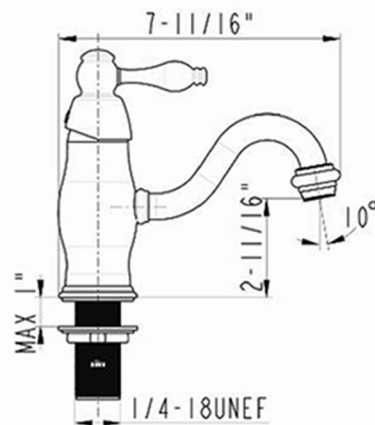
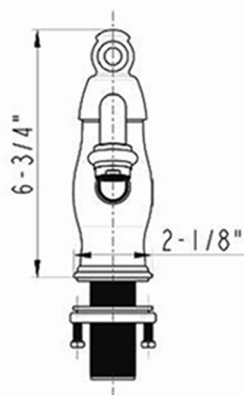
### PACKAGE INCLUDES THE FOLLOWING ITEMS:

- \* 24" Hand Hammered Copper Wall Mount Vanity with Tuscan Design
- \* Single Handle Bathroom Faucet / ORB Finish (Model# B-SH02ORB)
- \* Non-overflow Teardrop Grid Drain / ORB Finish (Model# D-207ORB)

\* ORB: Oil Rubbed Bronze

### FAUCET DETAILS (Model# B-SH02ORB)

- \* Solid Brass Single Handle Bathroom Faucet
- \* Overall Height: 6.75" / Spout Reach: 6.75"
- \* Valve Type: Drip Free Ceramic Disc
- \* Flow Rate: 2.2 GPM
- \* NSF/ANSI, cUPC, ADA, Low Lead Compliant (California AB-1953)



### DRAIN DETAILS (Model# D-207ORB)

- \* 1.5" Non-Overflow Grid Bathroom Sink Drain
- \* Design: Teardrop Grid
- \* Upper Flange Dimension: 2.25"
- \* Material: Solid Brass

