

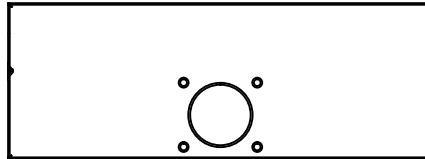


Powering Business Worldwide

D TYPE BR LOADCENTER RATINGS:

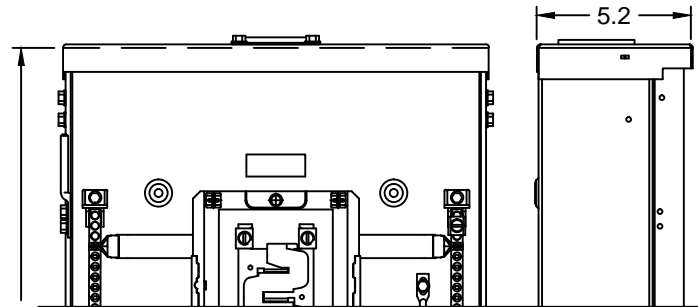
Ref: 96-3563

Enclosure:	Outdoor NEMA 3R
Incoming Main:	Main Lug Only
Loadcenter Electrical Rating:	120/240 VAC, Single Phase
Bus Bar Ampere:	125 Amps Max
Number of Spaces & Circuits:	See Table on Page 2
Incoming Wire Range:	#6-2/0
Bus Bar Material:	Tin Plated Aluminum (Standard)
Trim Type:	Outdoor Surface
Trim Paint:	ANSI 61 Light Gray
Short Circuit Rating:	See Branch Breaker Ratings
Box Dimensions:	14.3"W x 5.2"D x "A" (See Table on page 2)



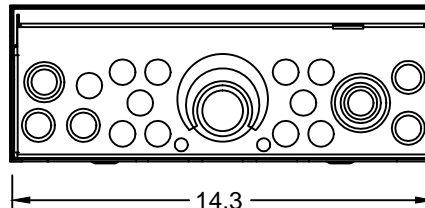
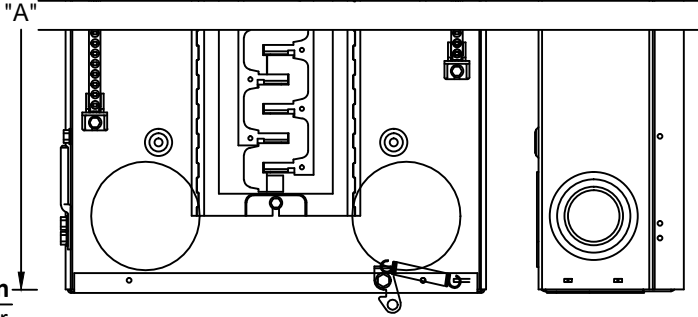
C FEATURES:

- Steel Backpan** - For reliable breaker mounting.
- Single keyhole mounting** - One keyhole at top and bottom for mounting and leveling.
- Split Neutral Bar Assembly** - For better management of load wires.
- Drywall marking on Enclosure** - Indicates mounting depth for flush applications
- Top or bottom feed** - Acceptable for either top or bottom applications.
- Warranty** - 10 year limited warranty on all BR Loadcenters and Breakers.



B OPTIONAL ACCESSORIES:

Catalog Number	Description
GBK5	5 POS #14-4 Ground Bar
GBK10	10 POS #14-4 Ground Bar
GBK14	14 POS #14-4 Ground Bar
GBK21	21 POS #14-4 Ground Bar
NL20	Neutral/Ground Lug #2/0 max
BRFP	1" Filler Plate
BREQS125	Hold-down kit for Type BR breaker
BR230SUR	BR 2P 30A Circuit Breaker w/ Surge Protection



TITLE BR 1" LOADCENTER, MAIN LUG ONLY, OUTDOOR NEMA 3R, 120/240 VAC, 1 PHASE	DRAFTER/DESIGNER M. Egan	DATE (YYYY/MM/DD) 2014/06/27
--	------------------------------------	--

EATON CORPORATION - CONFIDENTIAL AND PROPRIETARY NOTICE TO PERSONS RECEIVING THIS DOCUMENT AND/OR TECHNICAL INFORMATION THIS DOCUMENT, INCLUDING THE DRAWING AND INFORMATION CONTAINED THEREON, IS CONFIDENTIAL AND IS THE EXCLUSIVE PROPERTY OF EATON CORPORATION, AND IS MERELY ON LOAN AND SUBJECT TO RECALL BY EATON AT ANY TIME. BY TAKING POSSESSION OF THIS DOCUMENT, THE RECIPIENT ACKNOWLEDGES AND AGREES THAT THIS DOCUMENT CANNOT BE USED IN ANY MANNER ADVERSE TO THE INTERESTS OF EATON AND THAT NO PORTION OF THIS DOCUMENT MAY BE COPIED OR OTHERWISE REPRODUCED WITHOUT THE PRIOR WRITTEN CONSENT OF EATON. IN THE CASE OF CONFLICTING CONTRACTUAL PROVISIONS, THIS NOTICE SHALL GOVERN THE STATUS OF THIS DOCUMENT. © 2014 Eaton Corporation, All Rights Reserved	SIZE A	DRAWING NUMBER 98-1091	REVISION 001
		UNLESS OTHERWISE SPECIFIED DIMENSIONS IN INCHES	
		SCALE 1=6	SHEET 1 OF 2



Powering Business Worldwide

LOADCENTER DETAILS

Catalog #	Dim "A"	Main lug Amps	Spaces / Circuits	Bus Material	Wire Size Range Cu/Al 60°C or 75°C	Notes
BR1224L125R	16.75	125	12/24	Alum.	#6-2/0	
BR1224L125RG	16.75	125	12/24	Alum.	#6-2/0	8 ground terminals included
BR1624L125R	18.75	125	16/24	Alum.	#6-2/0	
BR2024L125R	21	125	20/24	Alum.	#6-2/0	
BR2024L125RG	21	125	20/24	Alum.	#6-2/0	12 ground terminals included plus 2/0 lug

Note: Catalog Numbers may have additional characters at the end which describe alternate details, including but not limited to the following: S, F, W, G, GK, PK, PB, SF, RN, MI, V and #s. Contact sales for those specific details when necessary.

TITLE BR 1" LOADCENTER, MAIN LUG ONLY, OUTDOOR NEMA 3R, 120/240 VAC, 1 PHASE	DRAFTER/DESIGNER M. Egan	DATE (YYYY/MM/DD) 2014/06/27
---	-----------------------------	---------------------------------

EATON CORPORATION - CONFIDENTIAL AND PROPRIETARY NOTICE TO PERSONS RECEIVING THIS DOCUMENT AND/OR TECHNICAL INFORMATION THIS DOCUMENT, INCLUDING THE DRAWING AND INFORMATION CONTAINED THEREON, IS CONFIDENTIAL AND IS THE EXCLUSIVE PROPERTY OF EATON CORPORATION, AND IS MERELY ON LOAN AND SUBJECT TO RECALL BY EATON AT ANY TIME. BY TAKING POSSESSION OF THIS DOCUMENT, THE RECIPIENT ACKNOWLEDGES AND AGREES THAT THIS DOCUMENT CANNOT BE USED IN ANY MANNER ADVERSE TO THE INTERESTS OF EATON AND THAT NO PORTION OF THIS DOCUMENT MAY BE COPIED OR OTHERWISE REPRODUCED WITHOUT THE PRIOR WRITTEN CONSENT OF EATON. IN THE CASE OF CONFLICTING CONTRACTUAL PROVISIONS, THIS NOTICE SHALL GOVERN THE STATUS OF THIS DOCUMENT. © 2014 Eaton Corporation, All Rights Reserved	SIZE A	DRAWING NUMBER 98-1091	REVISION 001
			UNLESS OTHERWISE SPECIFIED DIMENSIONS IN INCHES SCALE 1=1