

# CHAMPION® 4 RIGHT HEIGHT® ROUND FRONT COMPLETE TOILET

VITREOUS CHINA

## CHAMPION® 4 RIGHT HEIGHT® ROUND FRONT COMPLETE TOILET

### □ 731BA.001

- Vitreous china
- 2-3/8" fully-glazed trapway
- \*EverClean® Surface
- Low-consumption (6.0 Lpf/1.6 gpf)
- 4" piston action Accelerator™ flush valve
- ADA compliant for ADA accessible applications
- Speed Connect® tank/bowl coupling system
- Chrome finish handle
- Sweeping pier on bowl helps omit buildup of dust and dirt in the crevice between the tank and the bowl
- 100% factory flush tested
- Color-matched plastic toilet seat and cover with EverClean surface
- Lifetime warranty on chinaware, 10 year warranty on all mechanical parts and 1 year warranty on seat
- **Easy Installation.** Everything needed for toilet installation is included and can be hand tightened
- Complete Toilet includes: Wax ring, 2 bolt caps, closet bolts, seat and trip lever



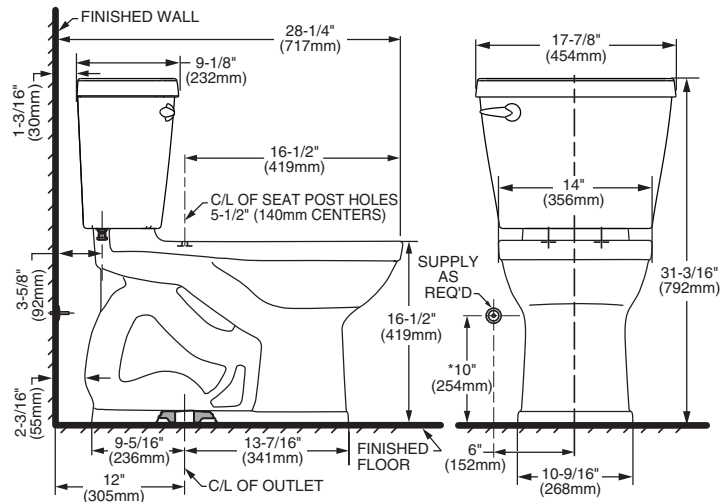
### Nominal Dimensions:

717 x 454 x 792mm  
(28-1/4" x 17-7/8" x 31-3/16")

### Compliance Certifications -

#### Meets or Exceeds the Following Specifications:

- ASME A112.19.2/CSA B45.1 for Vitreous China Fixtures



#### NOTES:

THIS TOILET IS DESIGNED TO ROUGH-IN AT A MINIMUM DIMENSION OF 305MM (12") FROM FINISHED WALL TO C/L OF OUTLET. SUPPLY NOT INCLUDED WITH FIXTURE AND MUST BE ORDERED SEPARATELY.

\* DIMENSION SHOWN FOR LOCATION OF SUPPLY IS SUGGESTED.

**IMPORTANT:** Dimensions of fixtures are nominal and may vary within the range of tolerances established by ASME A112.19.2/CSA B45.1. These measurements are subject to change or cancellation. No responsibility is assumed for use of superseded or voided pages.

### \*EverClean® Surface Stays Cleaner Longer

Permanent EverClean antimicrobial surface inhibits the growth of stain and odor causing bacteria, mold and mildew on the surface. The EverClean super smooth surface keeps fixtures cleaner longer.

#### To Be Specified:

- Color:  White
- Supply with stop:

**CHAMPION® 4**  
Flushing System

 MEETS THE AMERICANS WITH DISABILITIES ACT GUIDELINES AND ICC ANSI A117.1 REQUIREMENTS FOR ACCESSIBLE AND USABLE BUILDING FACILITIES-CHECK LOCAL CODES.