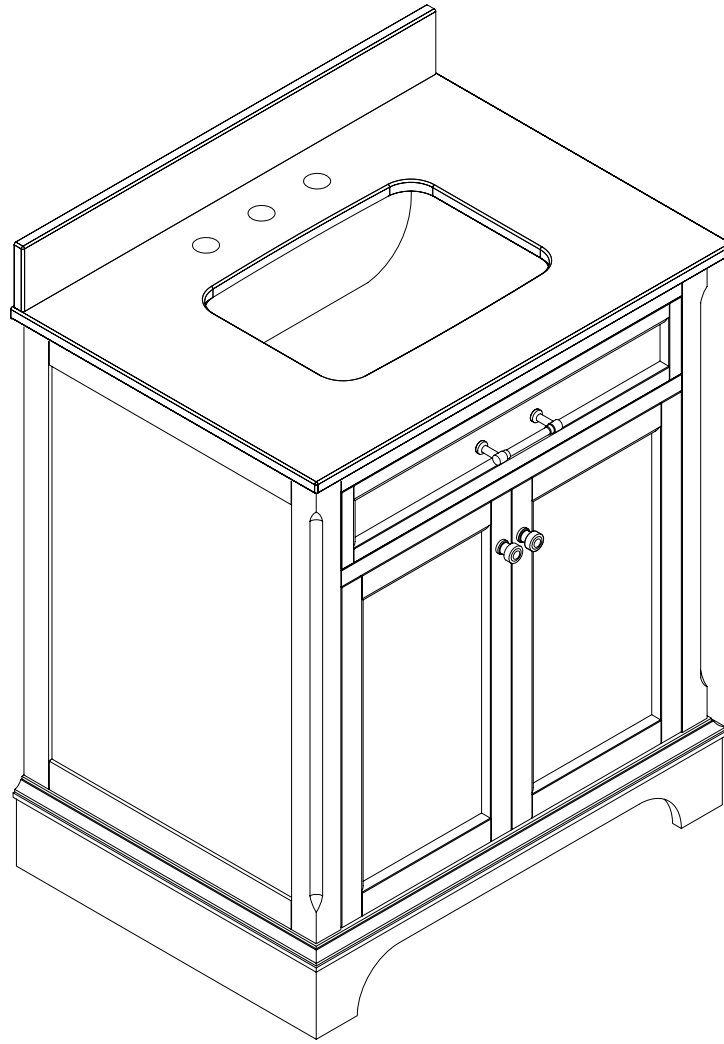


allen + roth®

welcoming • sophisticated • inspiring



allen + roth® is a registered trademark of LF, LLC. All Rights Reserved.

ITEM #0731965

VANITY WITH TOP

MODEL #1026VA-30-205

Français p. 8

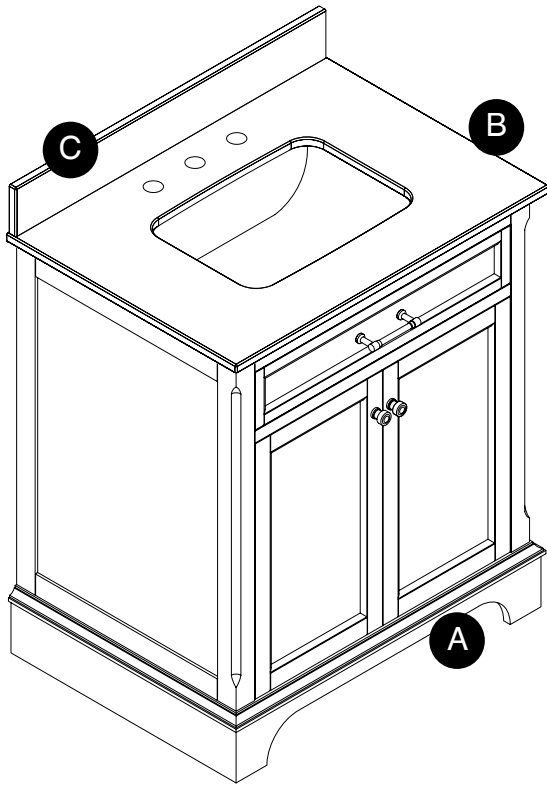
Español p. 15

ATTACH YOUR RECEIPT HERE

Serial Number _____ Purchase Date _____

Questions, problems, missing parts? Before returning to your retailer, call our customer service department at 1-866-439-9800, 8 a.m. – 8 p.m., EST, Monday - Friday.

PACKAGE CONTENTS



PART	DESCRIPTION	QUANTITY
A	Vanity	1
B	Top (preassembled to Vanity (A))	1
C	Backsplash	1

HARDWARE CONTENTS

AA



Touch-up Pen
Qty. 1



SAFETY INFORMATION

Please read and understand this entire manual before attempting to assemble, operate or install the product.



WARNING

- Some steps are more easily handled with two adults.

CAUTION

- **DO NOT** try to pry off top from vanity. Damage to top or vanity may occur.
- Use care when assembling the vanity, take your time and follow the assembly instructions closely.

KEEP THESE INSTRUCTIONS FOR FUTURE REFERENCE.

allenandroth.com **allen + roth**

PREPARATION

Before beginning assembly of product, make sure all parts are present. Compare parts with package contents list and hardware contents list. If any part is missing or damaged, do not attempt to assemble the product.

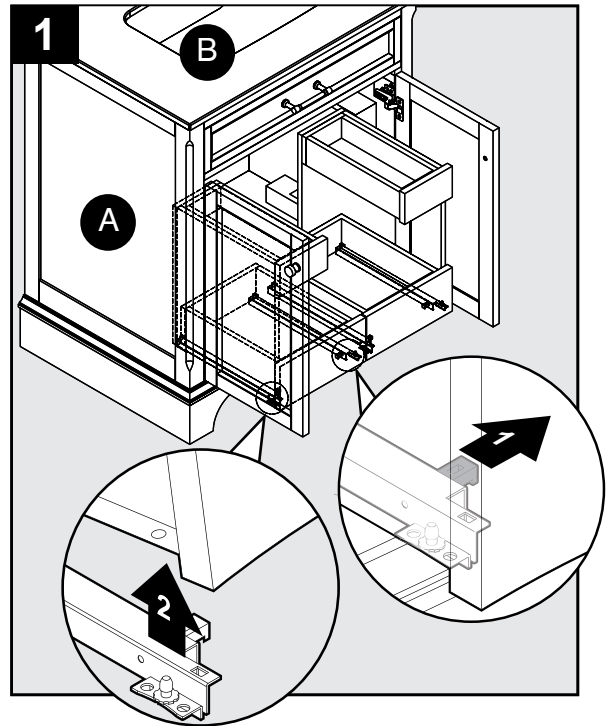
Estimated Assembly Time: 20-30 minutes (24 hours for adhesive to dry).

Tools Required for Assembly (not included): Phillips screwdriver, utility knife or scissors, adhesive, power drill with drill bit

Helpful Tools (not included): Measuring tape, level

INSTALLATION INSTRUCTIONS

1. Prior to moving vanity (A) to its desired location, remove drawers preassembled in vanity (A) by first fully extending the drawers. Then locate plastic tabs on metal glide tracks at left and right sides of drawer box. To disengage drawer box from glides, pull out plastic tabs from glide toward center of drawer. Then, gently lift drawer up to remove it from vanity (A).



INSTALLATION INSTRUCTIONS

Note: Clean area where the vanity (A) will be permanently located prior to beginning installation, ensuring the vanity (A) will not interfere with any water supply and drain lines once mounted.

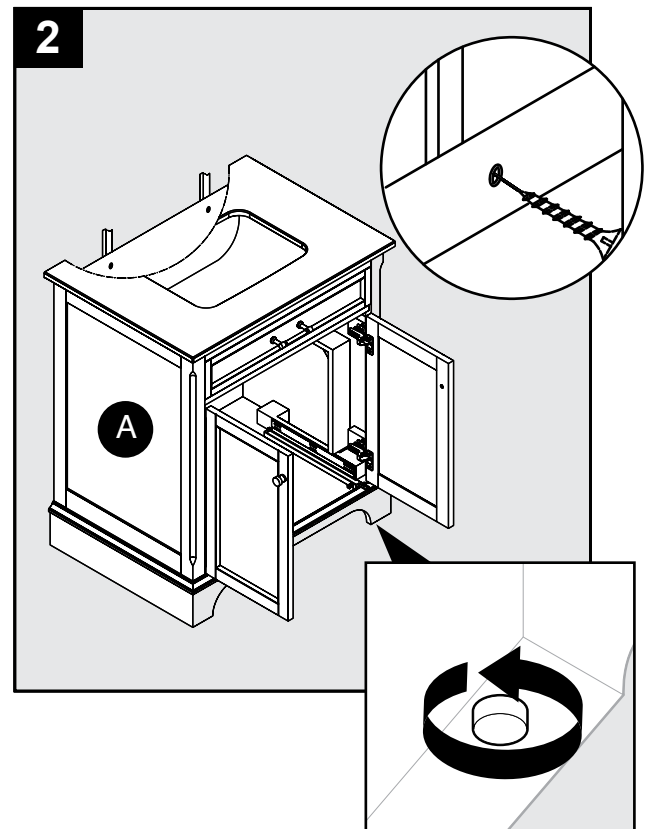
2. With two people, carefully place vanity (A) with top (B) against the wall in its final location. Find and mark locations of wall studs behind the permanent location of vanity (A).

Note: Use preassembled levelers on legs of vanity (A) to level the item. Twisting the levelers counterclockwise will increase the height of vanity (A), twisting them clockwise will decrease it.



WARNING

Vanity (A) **MUST** be secured to wall.

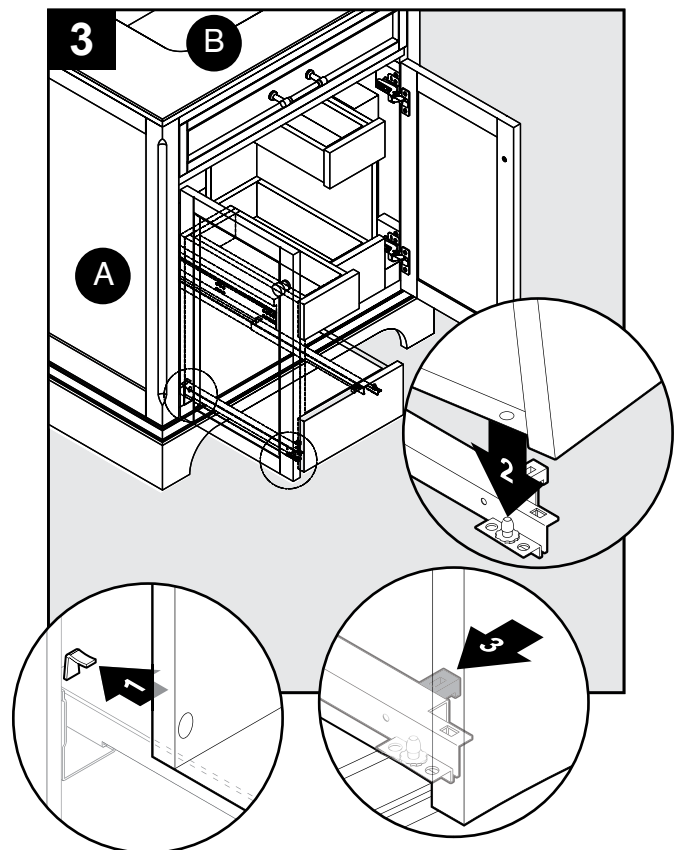


3. To reinstall drawers into vanity (A), fully extend metal glide tracks. Gently lower and slide drawer box into rear glide catch. Next lower drawer box down to completely rest on extended glides. Then, push back in the left and right plastic tabs to lock the drawer box in place.

Repeat for remaining drawer.

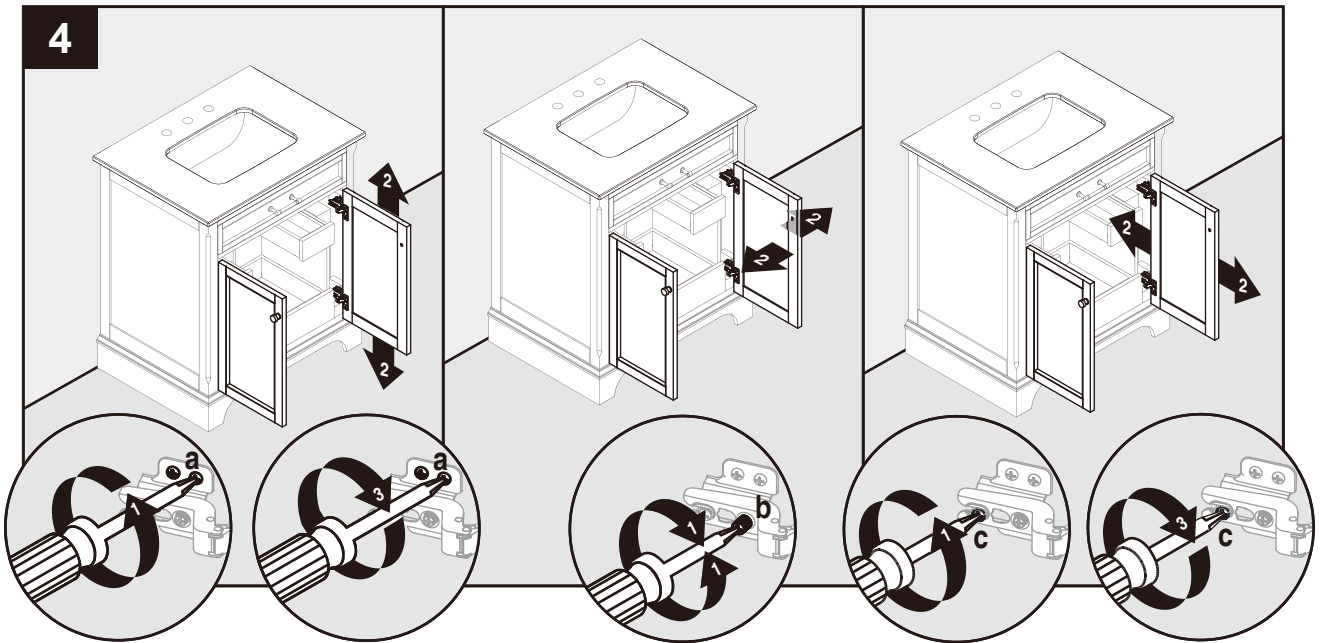
CAUTION

DO NOT force drawer or damage to glide may occur. If drawer does not slide in with ease, remove and try again from the start.



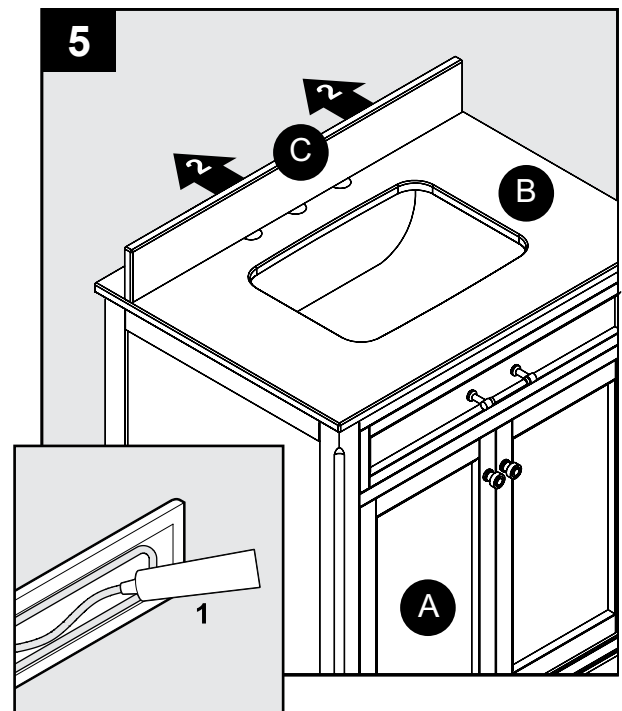
INSTALLATION INSTRUCTIONS

4. If you need to adjust the doors, do so in the following manner.
To adjust door up or down, loosen screws (a) on both hinges, adjust door, and retighten screws.
To adjust door left or right, turn screws (b) on both hinges, in or out.
To adjust door in or out, loosen screws (c) on both hinges, adjust door, and retighten screws.



5. Apply adhesive (not included) to unpolished side and bottom of backsplash (C). Position backsplash (C) on top (B) and against wall. Wipe away any excess adhesive with a soft cloth, and wait approximately 24 hours for it to dry.

Assembly is now complete. Install desired faucet and drain assemblies (neither included) per the manufacturers' instructions to complete the installation.



CARE AND MAINTENANCE

- Dust the vanity regularly with a soft, non-lint producing cloth or household dusting product.
- You can clean the vanity with a gentle, non-abrasive household cleaner.
- Make sure to dry the wood immediately with a soft cloth or towel.
- The stone top can be cleaned using standard marble cleaning agents available at your local supplier.
- Tips for using touch-up pen (AA): For scratches, stroke in direction of scratch. Rub off excess colorant promptly with a soft cloth.

IMPORTANT

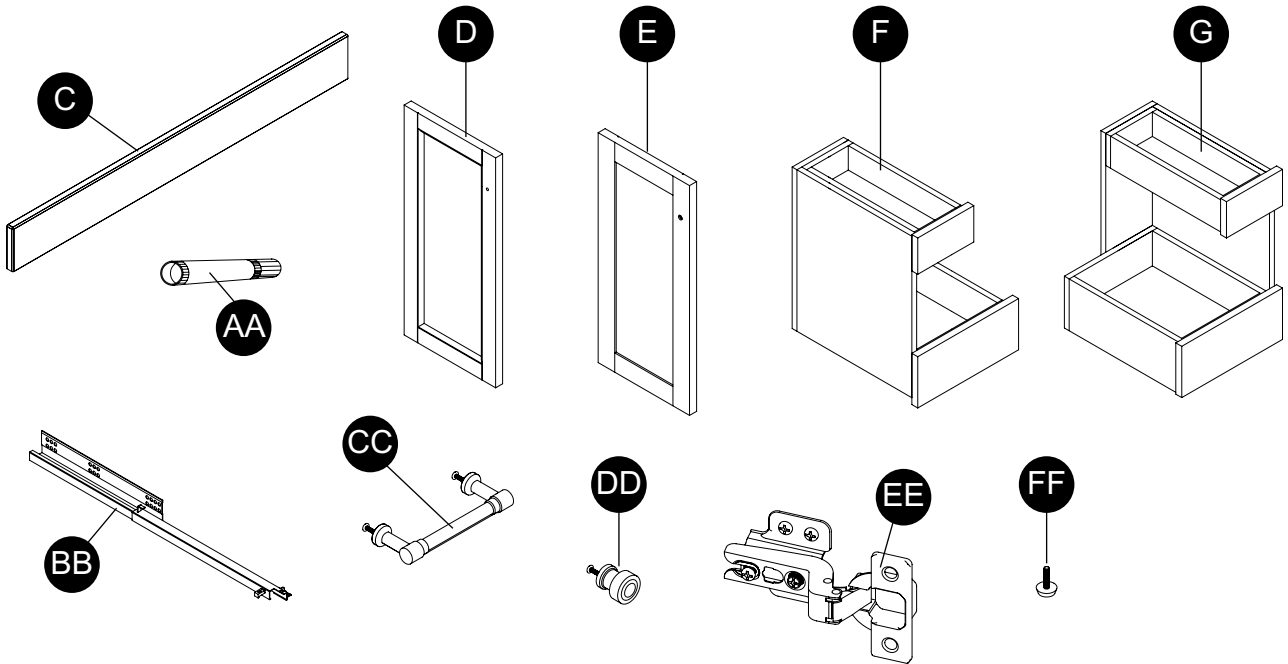
- Shade variations and patterns are an inherent characteristic of stone (e.g. granite, marble, engineered stone). Stone tops will vary from product to product. Use caution placing items such as soap or any fragranced material on the stone surface. Use a soap dish, coaster or similar item to protect the surface if placing any soap or fragranced products on the stone.
- If soap or fragranced products come in contact with the stone top, rinse the surface with water and dry using a soft non-abrasive cloth.
- Stone care products are available at your local home center store. Follow the manufacturer's directions on how to use.
- **DO NOT** use products to clean the stone top that contain acetone, lemon, vinegar or other acids as these may cause damage to the stone surface.
- Periodically reseal the stone top using an appropriate stone sealer available from your local home store. Follow the manufacturer's directions on how to apply.

WARRANTY

The manufacturer warrants this item against defects in materials and workmanship for a period of one (1) year from the date of original retail purchase. This warranty applies only to the original purchaser. This warranty does not apply to any damage on the product by accident, misuse, or modified, improper installation or by affixing accessories not produced by the manufacture. The manufacturer is not accountable whatsoever for product installation during the warranty period. There is no further expressed warranty. The manufacturer shall not be legally responsible for incidental, consequential or special damages arising at or in connection with product use or performance except as may otherwise be accorded by law. The manufacturer disclaims any and all implied warranties.

REPLACEMENT PARTS LIST

For replacement parts, call our customer service department at 1-866-439-9800, 8 a.m. - 8 p.m., EST, Monday - Friday.



PART	DESCRIPTION	PART#
C	Backsplash	PF-1026VA-30-205-001
D	Left Door	PF-1026VA-30-205-002
E	Right Door	PF-1026VA-30-205-003
F	Left Drawer	PF-1026VA-30-205-004
G	Right Drawer	PF-1026VA-30-205-005
AA	Touch-up Pen	W3504A
BB	Glide Track Set	663BH-12
CC	Pull (with screw)	CF-96-004-BN
DD	Knob (with screw)	CF-D25-005-BN
EE	Hinge	C-90-107
FF	Leveler	T-1007

Printed in China

allen + roth® is a registered trademark of LF, LLC. All Rights Reserved.

allenandroth.com **allen + roth**