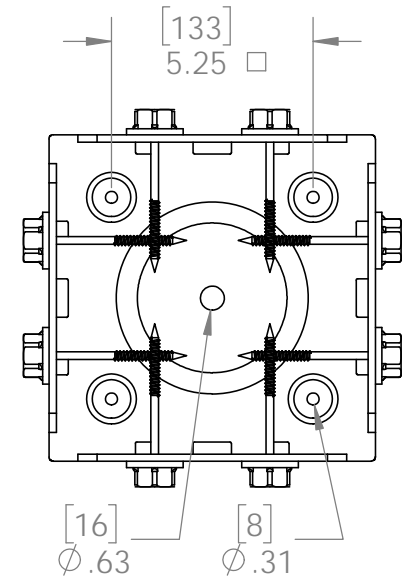
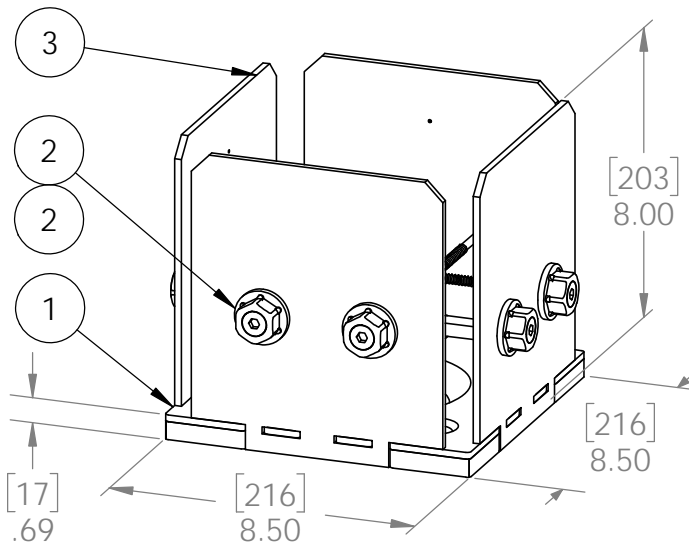
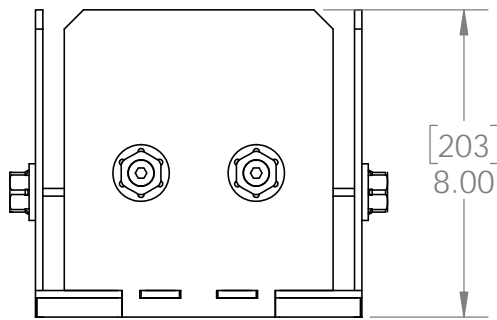
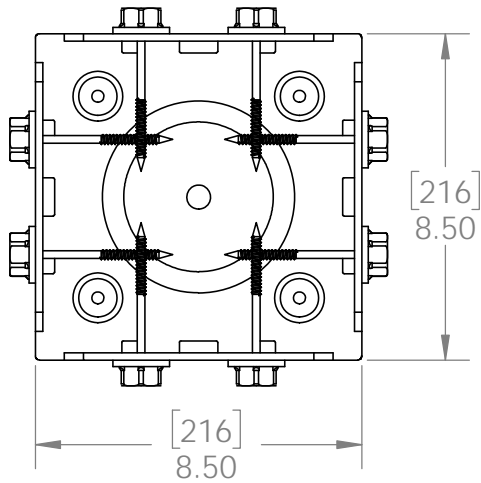


# Product & Packaging Specs

## 8x8 Post Base (8x8-PB-IW)

Item #: 51709

ITEM NO.	QTY.	PART NUMBER	DESCRIPTION
1	1	56609-11	Assembly, 8x8 Stand Off
2	0.8	56621	1 1/2" Hex Cap Nut (HCN)
3	4	51709-15	Plate, 8x8 Side Compression
4	0.32	56627	OWT Timber Screw 3-3/4"

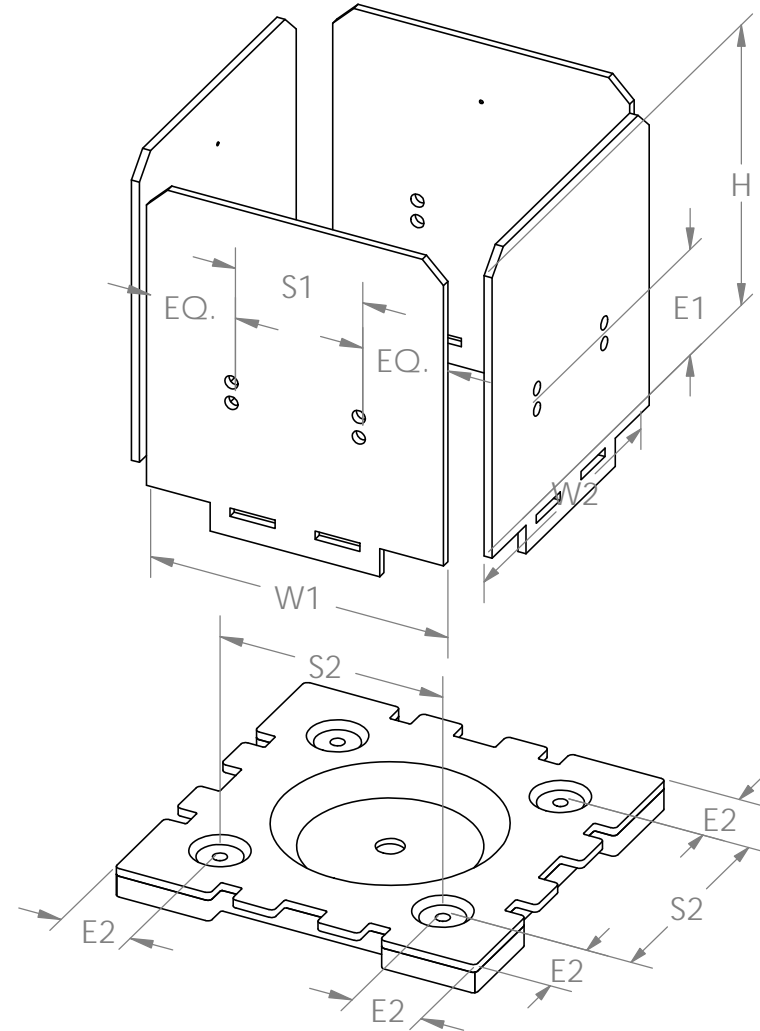
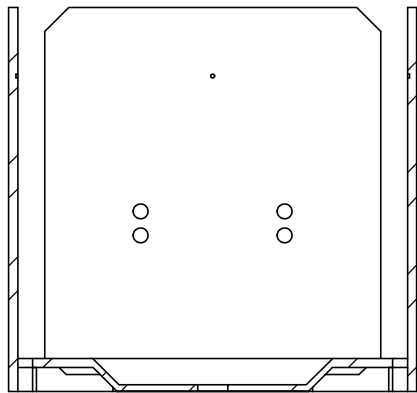
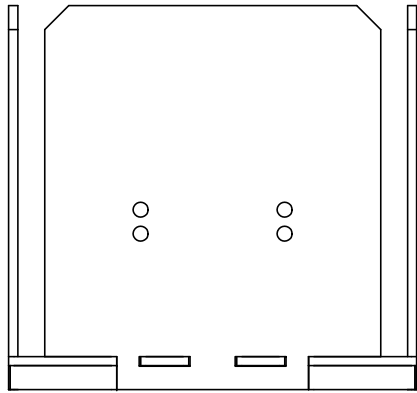


Weight: 39.01 LBS  
 Scale: 1:5  
 Last updated: 4/29/2016

# Product & Packaging Specs

## 8x8 Post Base (8x8-PB-IW)

Item #: 51709



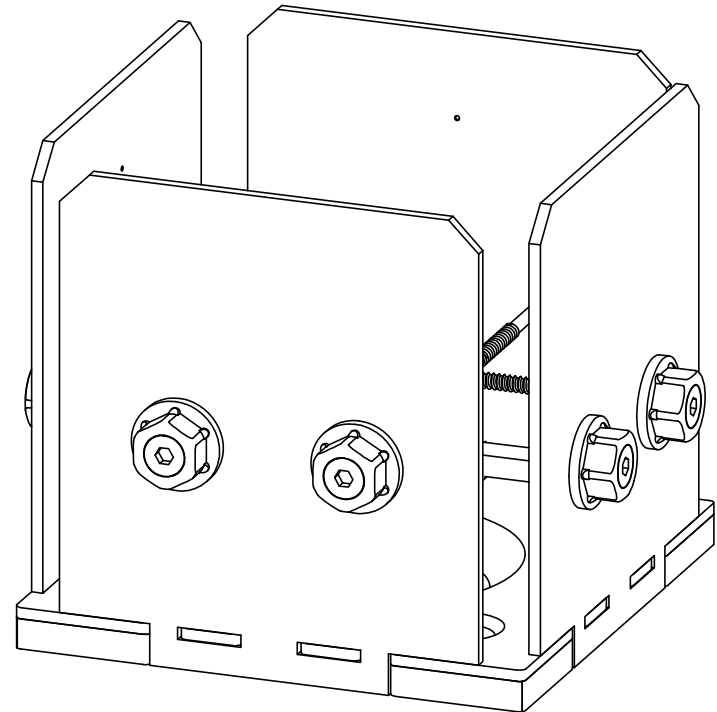
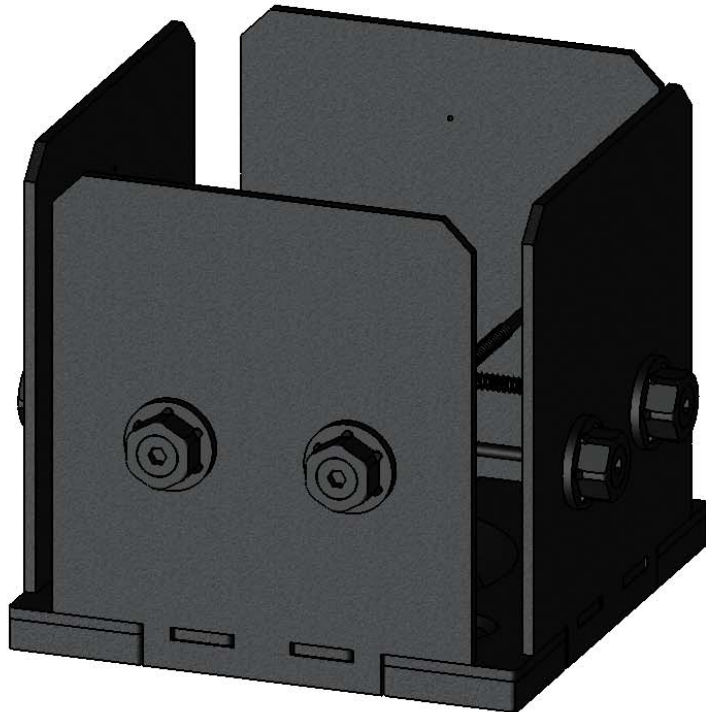
Weight: 39.01 LBS  
Scale: 1:3  
Last updated: 4/29/2016

51709

# Product & Packaging Specs

## 8x8 Post Base (8x8-PB-IW)

Item #: 51709



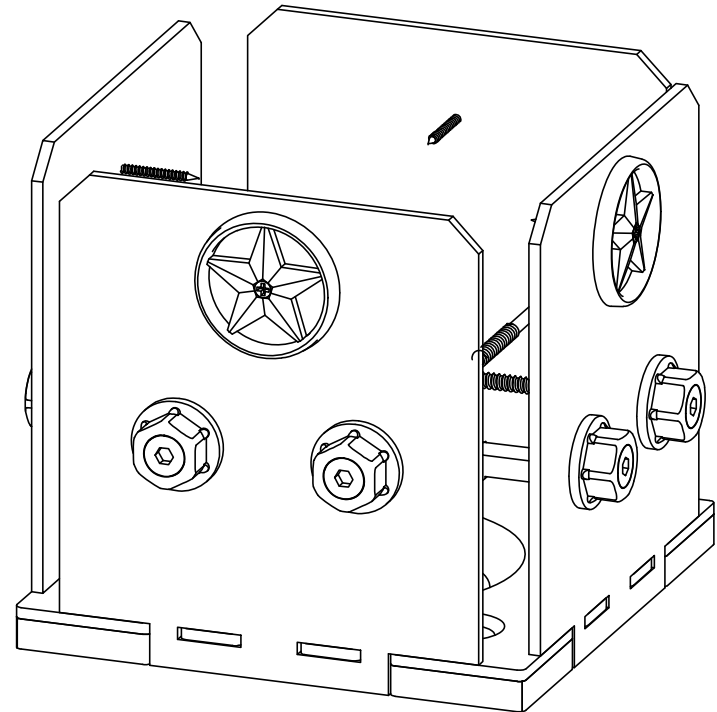
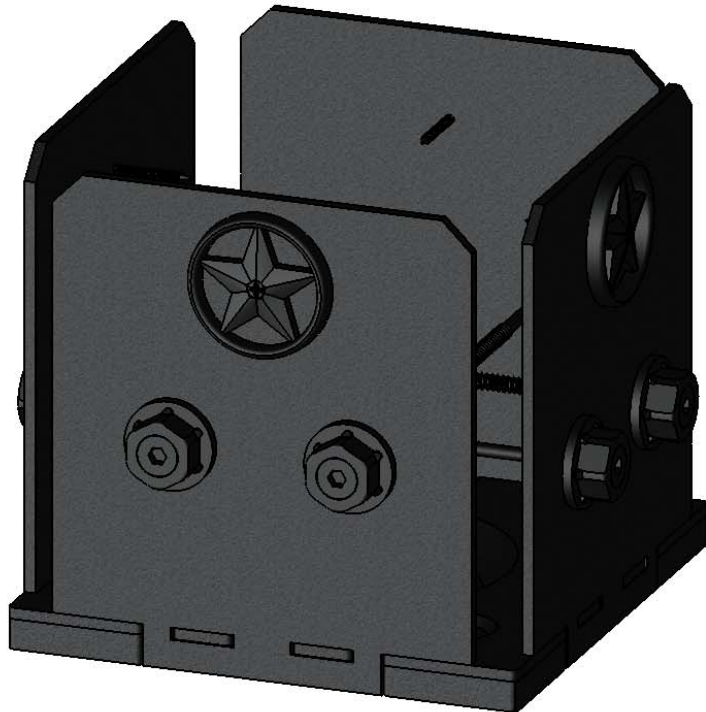
Weight: 39.01 LBS  
Scale: 1:3  
Last updated: 4/29/2016

51709

# Product & Packaging Specs

## 8x8 Post Base (8x8-PB-IW)

Item #: 51709



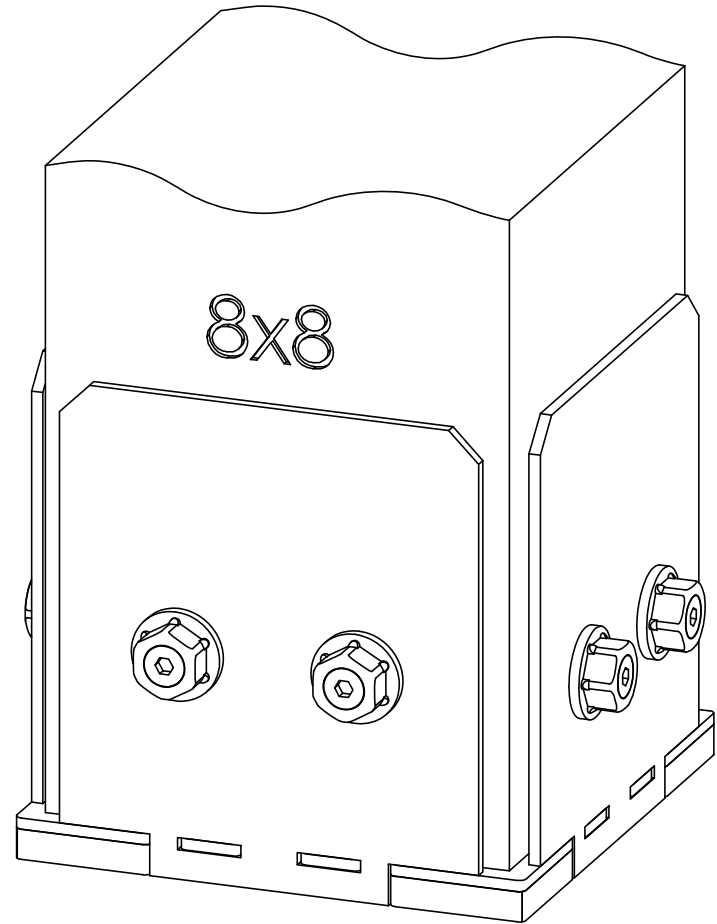
Weight: 39.01 LBS  
Scale: 1:3  
Last updated: 4/29/2016

51709

# Product & Packaging Specs

## 8x8 Post Base (8x8-PB-IW)

Item #: 51709



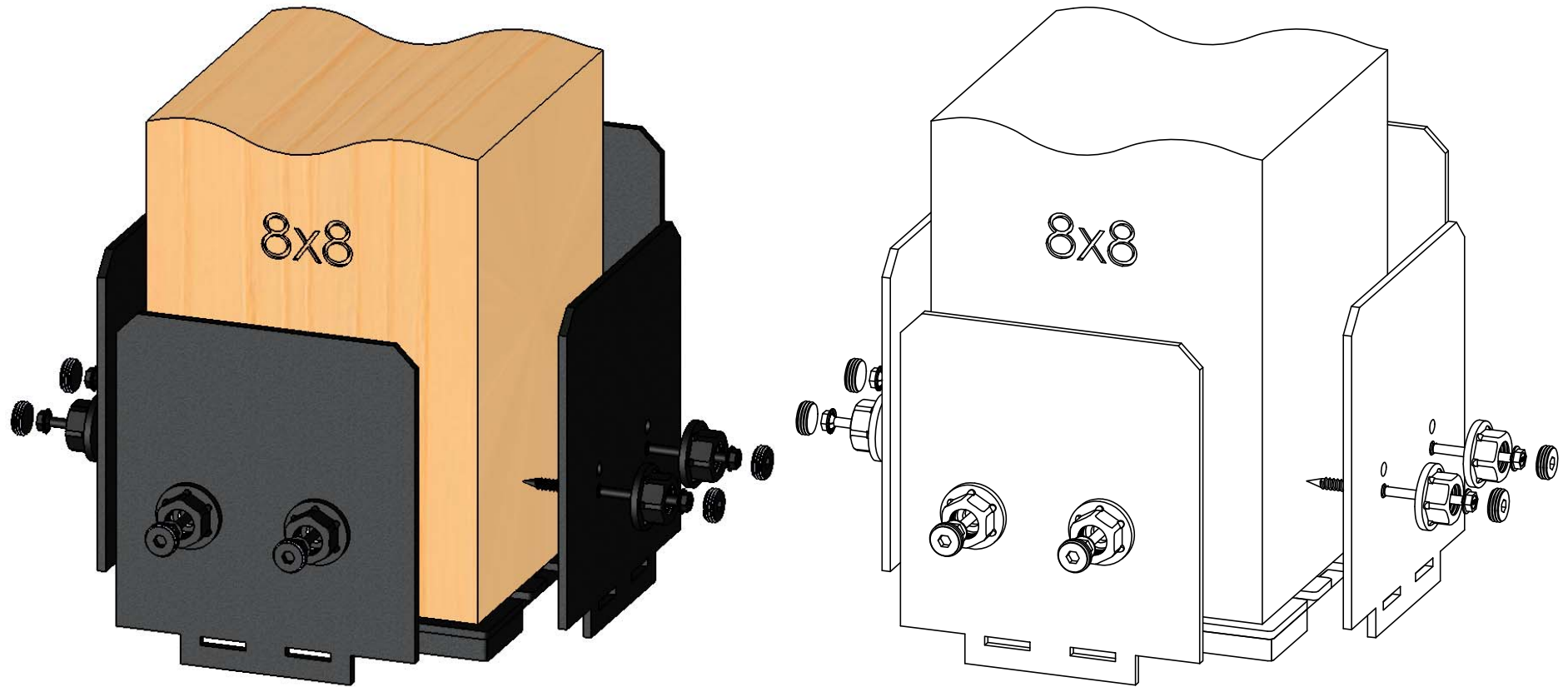
Weight: 39.01 LBS  
Scale: 1:3  
Last updated: 4/29/2016

51709

# Product & Packaging Specs

## 8x8 Post Base (8x8-PB-IW)

Item #: 51709



Weight: 39.01 LBS  
Scale: 1:3.5  
Last updated: 4/29/2016

51709

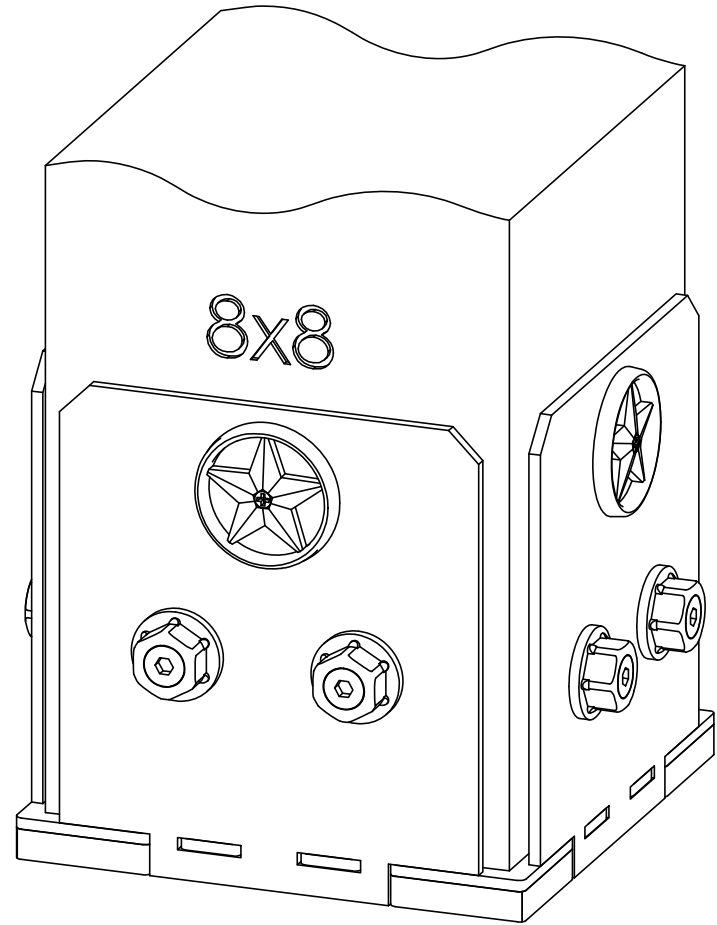


OZCO BUILDING PRODUCTS

# Product & Packaging Specs

## 8x8 Post Base (8x8-PB-IW)

Item #: 51709



Weight: 39.01 LBS  
Scale: 1:3  
Last updated: 4/29/2016

51709