

# **TOTAL CARE IN BATHING**

## **Walk-in Bathtubs**

### **Lowes Vendor #43199**

**Total Care in Bathing** walk-in tubs are now available through Lowes! We are proud to offer the highest quality tubs complete with a chrome faucet set, hand held shower and extension/filler piece at a truly affordable price.

#### **FEATURES AND OPTIONS**

**All Total Care in Bathing's walk-in tubs include the following features:**

- ✓ Tub shells are IAPMO Certified\* - the Gold Standard in Quality, Durability and Safety
- ✓ Jetting systems are UL Certified
- ✓ Assembled by hand and individually tested to ensure every tub meets our stringent quality standards prior to shipment to our customers
- ✓ Durable one-piece fiberglass tub for maximum strength and rigidity
- ✓ Sturdy polished stainless steel frame will never rust
- ✓ Water tight door seal guaranteed for life
- ✓ Low 6-inch threshold to easily step into and out of tub
- ✓ Stylish, 5-piece polished chrome fixtures
- ✓ 17" ADA compliant contoured seat eliminates the difficulty of lying down and rising up from tub floor
- ✓ Ergonomic grab bar
- ✓ Secondary door drain
- ✓ Hand-held shower can be deck or wall mounted
- ✓ Large, easy grip door handle
- ✓ Tile flange (or flange kit) for a water tight seal between walls and tub
- ✓ Extension filler piece for the perfect fit

**Total Care in Bathing offers our walk-in tubs with the following options:**

- ✓ Right or left hand configuration
- ✓ Combination Heated Air Jet and Whirlpool Hydrotherapy
  - Air Jet Hydrotherapy (gentle bubbling action, self cleaning)
  - Whirlpool Water Jet Hydrotherapy with Inline Heater (More forceful and massaging and maintains water temperature for a longer bathing experience)

#### **WHAT'S INCLUDED WITH THE WALK-IN TUB**

- ✓ The 5-piece chrome fixtures with hand held shower
- ✓ The filler/extension piece where indicated
- ✓ Shipping to your store or direct to customer is included in the price!

## PRODUCT INFORMATION

**Blueprints can be downloaded from our website [www.totalcareinbathing.com](http://www.totalcareinbathing.com) .**

**MODEL 3052**                      Dimensions: 29 ¾"W x 52" L x 40"H      60 Gal. Capacity  
This is our most popular model. At 40-inches high, it gives you 33-inches of soaking depth. The length of this tub provides easy installation in the bathroom and fits into a 60-inch space. The 3052 includes an 8-inch filler piece.

Item #: 228997 - 3052 COMBO LH  
Item #: 231765 - 3052 COMBO RH

Item #: 251879 - 3052 LH  
Item #: 251905 - 3052 RH

**MODEL 2645**                      Dimensions: 26"W x 45"L x 40"H      42 Gal. Capacity  
The 2645 is our smallest walk-in tub. It is the ideal choice where space is limited, such as a shower stall. The bi-fold door allows for easy in and out of the tub. Its size is best for people of small stature. *Both our models 3048 and 2653 are also designed for small spaces and should be considered.*

Item #: 229751 - 2645 COMBO LH  
Item #: 231980 - 2645 COMBO RH

Item #: 251882 - 2645 LH  
Item #: 251858 - 2645 RH

**MODEL 3048**                      Dimensions: 29 ¾"W x 47 ½"L x 38"H      56 Gal. Capacity  
This tub is also designed for smaller spaces but provides more width than our 26-inch models. Its size ensures an easy fit through standard doorways and is great for retrofit installations. *Consider the model 3052 if the space can accommodate a 52" length.*

Item #: 230879 - 3048 COMBO LH  
Item #: 229727 - 3048 COMBO RH

Item #: 251887 - 3048 LH  
Item #: 251892 - 3048 RH

**MODEL 3260**                      Dimensions: 32"W x 60"L x 37"H      70 Gal. Capacity  
The 3260 provides a full length bathing experience. At 60 inches long, the 3260 is our longest model. It fits most easily in new construction and complete bathroom renovations. *Consider the model 3052 if the 32" width is an issue. The 3052 also provides a deeper soaking depth.*

Item #: 230885 - 3260 COMBO LH  
Item #: 229750 - 3260 COMBO RH

Item #: 251863 - 3260 LH  
Item #: 251885 - 3260 RH

**MODEL 3260D**                      Dimensions: 32"W x 60"L x 47"H      83 Gal. Capacity  
The 3260D offers the ultimate in deep soaking! It has a full 39-inch water depth, providing a soak up to the neck and plenty of room to stretch out the longest of legs. This is the tub your taller customers will enjoy the most but make sure the tub will fit through doorways! *Consider the 3055D if length or width is an issue.*

Item #: 229479 - 3260D COMBO LH  
Item #: 231777 - 3260D COMBO RH

Item #: 251894 - 3260D LH  
Item #: 251851 - 3260D RH

**MODEL 3055D**                      Dimensions: 29 ¾"W x 55"L x 47"H                      80 Gal. Capacity  
 The 3055D offers deep soaking depth with easy installation. This tub provides a deep soaking experience and will fit easily through a 30-inch door. The 3055D also includes an extension filler piece for retrofit installations.

Item #: 231764 - 3055D COMBO LH  
 Item #: 228616 - 3055D COMBO RH

Item #: 251916 - 3055D LH  
 Item #: 251860 - 3055D RH

**MODEL 3252 WT – Wheelchair Transfer Tub**                      Dimensions: 32"W x 52"L x 40"H  
 The **outward swinging door** of this tub allows safe and easy wheelchair transfers. Its low step-in threshold is perfect for those who want a walk-in tub but prefer the larger door opening. At 52-inches in length, it is ideal for both retrofit and new construction projects.  
*\*This bathtub is currently not IAPMO certified.*

Item #: 230249 - 3252WT COMBO LH  
 Item #: 229189 - 3252WT COMBO RH

Item #: 250687 - 3252WT LH

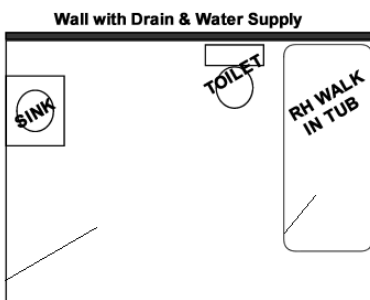
**DIMENSIONS**

MODEL NUMBER	EXTERIOR WIDTH	EXTERIOR LENGTH	EXTERIOR HEIGHT	INTERIOR WATER DEPTH	WATER CAPACITY (GALLONS)
2645	26	45	40	33	42
3048	29 3/4	47 1/2	38	33	56
3052	29 3/4	52	40	33	60
3055D	29 3/4	55	47	39	80
3260	32	60	37	30	70
3260D	32	60	47	39	83
3252WT	32	52	40	33	60

**Please contact Total Care in Bathing direct for any questions you may have!**

## GUIDE TO SELECTING THE RIGHT TOTAL CARE IN BATHING WALK-IN BATHTUB

- ✓ We recommend you consult a licensed contractor before ordering any walk-in bathtub.
- ✓ Measure the space where your new walk-in tub will be installed and review the dimensions to select the tubs that will fit in that space. Our walk-in tubs are designed to fit in a standard 60" space or smaller.
- ✓ Measure the width of all the doorways, stairwells and hallways that your walk-in tub must fit through. Compare the walk-in bathtubs that will fit through these openings.
  - It is common to widen doorways by removing the doorjamb.
  - Most Total Care in Bathing walk-in tubs will fit through a standard 30-inch opening.
  - Visit [www.totalcareinbathing.com](http://www.totalcareinbathing.com) to view and download blueprints for each model.
- ✓ Consider the needs, as well as the size, of the primary users when choosing a walk-in tub. A deep tub may be more comfortable for taller bathers. Larger bathers may be uncomfortable in our narrower tubs (26" width). A dual hydrotherapy tub can improve the health and well being of many individuals.
- ✓ Review the amount of water necessary to fill the walk-in tub you have chosen and compare it with the capacity of your hot water heater. Ensure there is adequate hot water supply to enjoy your new Total Care in Bathing walk-in bathtub.
- ✓ Whether you need a left or right hand door swing depends on where your water supply and plumbing are located.
  - A **Left hand door swing** is needed when the drain, water supply and fixtures are on the left end of the tub.
  - A **Right hand door swing** is needed when the drain, water supply and fixtures are on the right end of the tub.



**Reverse plumbing** may be needed in situations where a toilet or sink blocks entry into the tub. In this example, the situation would normally call for a left hand door swing since the plumbing and water supply are on the left. However, since the toilet would block access to the door, a right hand tub would be ordered and the plumber would run the drain and water supply under the tub to the other end. The door and fixtures would end up on the right end of the tub.