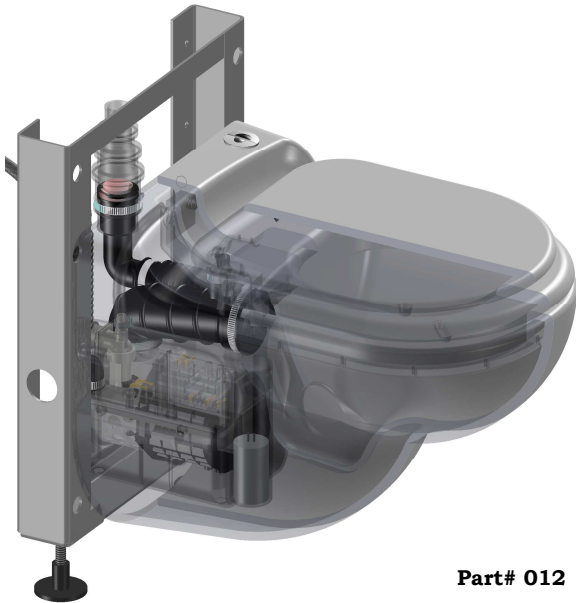


Self Contained Units - Macerators

Sanistar



Part# 012

This modern shaped self-contained china toilet emulates the European wall-hung toilets that are so popular. It can be used to install a half-bathroom up to 9 feet below the sewer line, or even up to 100 feet away from a soil stack. The Sanistar can handle the effluent from a toilet and sink for residential applications.

The Sanistar saves space and can be hung on any sturdy wall. It comes complete with a wall bracket system that can be placed against a wall or if you start from scratch, it can be built into the wall and mounted against a set of double 2 x 6 studs.

The wall bracket has feet that can be adjusted to allow the Sanistar to be hung at a height that is comfortable for the user; for example between 15 and 18 inches. The Sanistar uses a minimum amount of water.

The Sanistar is a combination of a vitreous china toilet bowl and macerator/pump built into one compact unit. The Sanistar needs no gravity flow tank as the flushing action and macerating pump cycle is automatic after pressing a push button on top of the bowl. The flushing mechanism is

electrically timed to allow water to pass through the toilet.

By pressing the push button, this activates a timer and a solenoid valve in order to fill and wash the sides of the bowl. The motor starts and the waste and paper are sucked inside, where it is macerated and pumped away. The motor stops after approximately 10-15 seconds and the timer programs the refill of the bowl with fresh water.

The standard dual flush version uses 1.28 gpf (4.8 lpf) and 1 gpf (3.8 lpf). To choose either option, the unit is provided with a dual push button. This option allows using less water than any regular toilet but with the same efficiency.

The inside of the Sanistar comprises of a pressure switch and circuit board assembly, which starts and stops the unit, and the motor, which drives the blade and the pump. The motor is sealed for life in an oil filled enclosure. A common spindle/shaft drives the impeller and the macerator blades. The moving parts therefore are kept to an absolute minimum. Water and organic waste matter, enter the chamber and are reduced to slurry as the macerator blades rotate at 3600 RPM. The reduced solids are picked up and the impeller mounted beneath the motor ejects the waste. The unit pumps the effluent upward to 9 feet and/or 100 feet horizontally (with gravity fall).

The discharge elbow on the back of the Sanistar can be rotated 360 degrees to fit any type of installation required. A non-return valve, which comes already assembled on the discharge elbow, prevents back flow into the unit.

The Sanistar is a forced main and does not need to vented and connected to a vent stack. Other fixtures may need to be vented as per local plumbing codes.

It is also highly recommended for the macerator/pump to be connected to a Ground Fault Interrupter (GFI) circuit.

The Sanistar has been certified to the applicable electrical standard; Electrical standard UL 788, CA: Electrical standard CSA C22.2

The Sanistar is composed by a toilet bowl and motor assembly. It comes with the toilet seat and metal frame to mount the toilet bowl to the wall.

Specifications:

Dimensions:	Sanistar Toilet H 16-3/8" x W 15-3/4" x D 20-1/2" H 42cm x W 40cm x D 52cm
Motor:	Induction Motor (no carbon brushes or gears), tested over 50,000 cycles. 3600 rpm.
Electrical supply:	110-115V; 60Hz; Max Amperage: 9.0 amps; 0.4 HP
Discharge:	Pumps vertically to 9 ft (3 m) Horizontally to 100 ft (33m)
Gravity Fall on Horizontal installations:	1/4" per Ft
Discharge Pipe Diameter:	1"
Construction Materials:	Vitreous China, Polypropylene, C.R.P., stainless steel, Neoprene Max. temp. 95°F (35°C)
Normal Running Time:	10-15 seconds subject to installation pipe run
Water per Flush:	1.28 US gal (4.8 liters) or 1 US gal (3.8 liters)
Discharge Rate:	Discharge Rate at 9 Ft – 9 gal/min (34 l/m) Discharge Rate at 3 Ft - 15 gal/min (58 l/m)
Designed to function with:	Sink

