



Vault™

Top-mount Apron Front Kitchen Sink
K-3935-3

Features

- 30-inch minimum base cabinet width.
- 18-gauge stainless steel.
- Top-mount.
- Medium single bowl.
- Three faucet holes.
- With integral shortened self-trimming apron.
- SilentShield® sound-absorption technology offers quieter performance.
- 29-3/4" (756 mm) x 24-5/16" (618 mm)

Optional Accessories

K-6429 Utility Rack
K-6466 Sink Rack
K-8801 Sink Strainer

Components

Product includes:

1130570 Hardware Kit, Self-Rimming
1173293 Hardware Kit, Side Clip

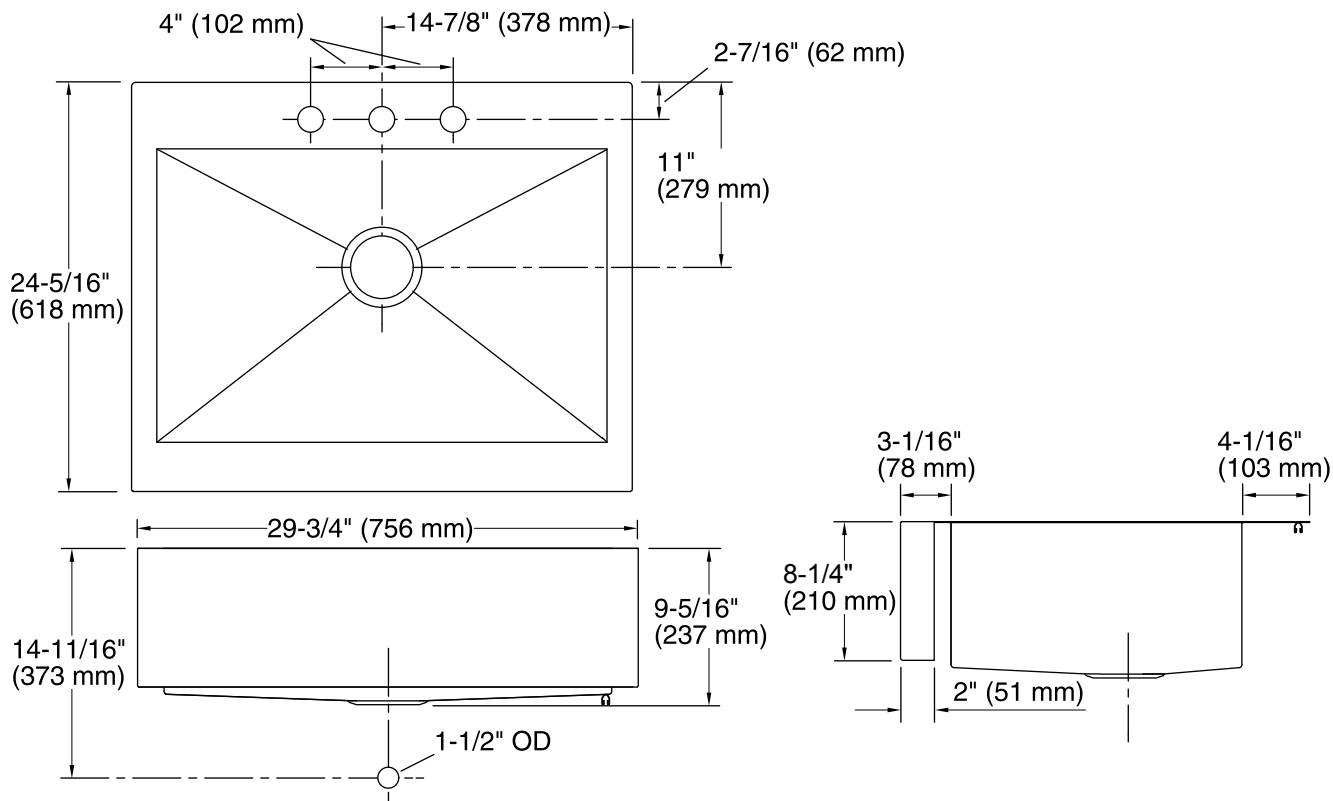


Codes/Standards

ASME A112.19.3/CSA B45.4

**Lifetime Limited Warranty for
KOHLER® Stainless Steel Sinks**

See website for detailed warranty information.



Technical Information

All product dimensions are nominal.

Bowl configuration: Single

Installation: Top-mount

Min. base cabinet width: 30" (762 mm)

Bowl area (Only) Length: 26-1/2" (673 mm)
Width: 17-3/16" (437 mm)
Bowl depth: 9" (229 mm)

Number of deck holes: 3

Faucet hole(s): 1-7/16" (37 mm)

Drain hole: 3-5/8" (92 mm)

Template: 1166716-7, required, included
1178341, required, included

Notes

Install this product according to the installation instructions.