

STYROFOAM™ BRAND DURAMATE™ PLUS EXTRUDED POLYSTYRENE FOAM INSULATION



PRODUCT NAME

STYROFOAM™ Brand
DURAMATE™ Plus Extruded
Polystyrene Foam Insulation

MANUFACTURER

The Dow Chemical Company
Dow Building Solutions
200 Larkin
Midland, MI 48674
1-866-583-BLUE (2583)
Fax 1-989-832-1465
www.dowbuildingsolutions.com

PRODUCT DESCRIPTION

STYROFOAM™ Brand DURAMATE™ Plus Extruded Polystyrene Foam Insulation is a tough extruded polystyrene insulation board designed for residential home construction. This extra-strong, rigid and moisture-resistant product is designed to meet the performance requirements of the industry.

APPLICATIONS

STYROFOAM™ Brand DURAMATE™ Plus Extruded Polystyrene Foam Insulation is particularly suitable for applications where the foam sheathing is fastened to frame walls.

Some key features and benefits of STYROFOAM™ Brand DURAMATE™ Plus Insulation include:

- Durability: technology for stiffness plus extra-strong film facers to resist damage and thereby reduce waste on the job site
- Moisture Resistance: closed-cell foam core with plastic facers
- Lightweight: easy to handle
- Stud Finders: fast, accurate installation
- Attachment: can be attached using industry-accepted fasteners
- STYROFOAM™ Brand DURAMATE™ Plus Insulation can be installed as a water-resistive barrier*

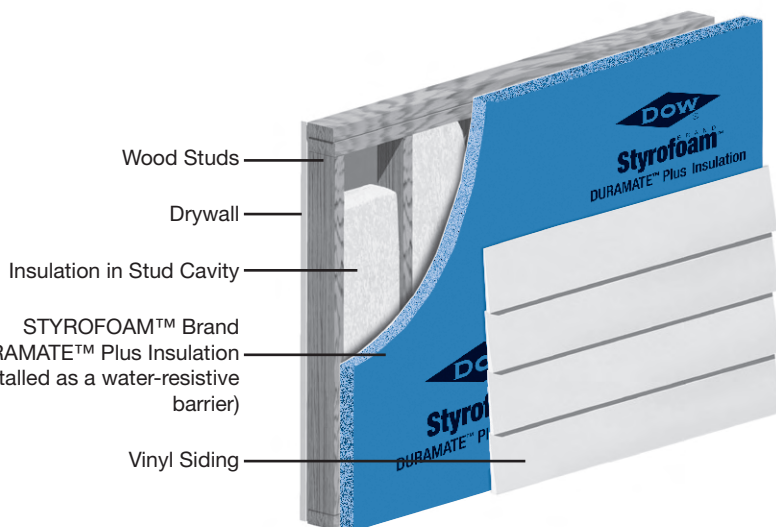


TABLE 1: FEATURES AND BENEFITS OF STYROFOAM™ BRAND DURAMATE™ PLUS EXTRUDED POLYSTYRENE FOAM INSULATION

FEATURE	BENEFIT
High, long-term R-value**	Enhances thermal efficiency, reducing energy cost
High compressive strength, extra-strong facers	Resist damage, reducing job site waste
Closed-cell foam	Resists moisture in all forms, including water vapor
Printed stud finders	Enable fast, accurate installation

TABLE 2: PHYSICAL PROPERTIES OF STYROFOAM™ BRAND DURAMATE™ PLUS EXTRUDED POLYSTYRENE FOAM INSULATION

PROPERTY AND TEST METHOD	VALUE
Thermal Resistance ⁽¹⁾ at nominal 1/2", ASTM C518 @ 75°F mean temp., ft ² •h•°F/Btu, min., R-value**	3.0
Compressive Strength ⁽²⁾ , ASTM D1621, psi, min.	15
Water Absorption, ASTM C272, % by volume, max.	0.3
Dimensional Stability ⁽³⁾ , ASTM D2126, % linear change, max.	2.0

⁽¹⁾ R-values are consistent with criteria of ASTM C578 and requirements of FTC R-value rule (16 CFR Part 460).

⁽²⁾ Vertical compressive strength is measured at 10 percent deformation or yield, whichever occurs first.

⁽³⁾ Based on 1" thickness.

**R means resistance to heat flow. The higher the R-value the greater the insulating power.

SIZES

Square-edge boards of STYROFOAM™ Brand DURAMATE™ Plus Insulation are available in nominal 1/2" thickness in both 4' x 8' and 4' x 9' board sizes.

PHYSICAL PROPERTIES

STYROFOAM™ Brand DURAMATE™ Plus Insulation features the exceptional water resistance properties of all STYROFOAM™ Brand Insulation products. The unique closed cell structure of STYROFOAM™ Brand Insulation helps resist moisture.

* To qualify as a water-resistive barrier, must be installed according to the installation instructions developed for installation of foam sheathing as a water-resistive barrier on www.dowbuildingsolutions.com

®™Trademark of The Dow Chemical Company ("Dow") or an affiliated company of Dow

For features and benefits of STYROFOAM™ Brand DURAMATE™ Plus Insulation, refer to Table 1.

STYROFOAM™ Brand DURAMATE™ Plus Insulation exhibits the properties indicated in Table 2 when tested as represented.

CODE COMPLIANCES

STYROFOAM™ Brand DURAMATE™ Plus Insulation complies with the following codes:

- IBC/IRC – International Building Code/International Residential Code, meets requirements for foam plastic insulation
- UL – Underwriters Laboratories Inc. Classified
- ICC Evaluation Service ESR-2142

SAFETY CONSIDERATIONS

All persons who work with this material must know and follow the proper handling procedures. The current Material Safety Data Sheet (MSDS) contains additional information on the safe handling, storage and use of this material. A copy of the MSDS can be obtained by calling 1-866-583-BLUE (2583) or by contacting your local Dow representative.

INSTALLATION

Adding a 1/2" thickness of STYROFOAM™ Brand DURAMATE™ Plus Insulation under siding reduces heat flow through the framing and enhances the performance of fibrous batts in the stud cavities.

AVAILABILITY

STYROFOAM™ Brand DURAMATE™ Plus Insulation is available through an extensive network of distributors and dealers. For more information, call 1-800-232-2436.

TECHNICAL SERVICES

Dow can provide technical information to help address questions when using STYROFOAM™ Brand DURAMATE™ Plus Insulation. Technical personnel are available at 1-866-583-BLUE (2583).

NOTICE: No freedom from any patent owned by Dow or others is to be inferred. Because use conditions and applicable laws may differ from one location to another and may change with time, Customer is responsible for determining whether products and the information in this document are appropriate for Customer's use and for ensuring that Customer's workplace and disposal practices are in compliance with applicable laws and other government enactments. The product shown in this literature may not be available for sale and/or available in all geographies where Dow is represented. The claims made may not have been approved for use in all countries or regions. Dow assumes no obligation or liability for the information in this document. References to "Dow" or the "Company" mean The Dow Chemical Company and its consolidated subsidiaries unless otherwise expressly noted. NO WARRANTIES ARE GIVEN; ALL IMPLIED WARRANTIES OF MERCHANTABILITY OR FITNESS FOR A PARTICULAR PURPOSE ARE EXPRESSLY EXCLUDED.

NOTICE: Changes to the International Residential Code require the installation of a water-resistive barrier (WRB) within most exterior wall assemblies in residential construction. The following Dow insulated sheathing products qualify as a WRB when installed according to the installation instructions developed for "installation of foam sheathing as a weather-resistive barrier": STYROFOAM™ DURAMATE™ Plus, STYROFOAM™ Residential Sheathing, STYROFOAM™ Tongue and Groove, STYROFOAM™ SIS™, STYROFOAM™ Square Edge, STYROFOAM™ Residing Board, STYROFOAM™ High Performance Underlayment, THERMAX™ Sheathing, TUFF-R™ and Super TUFF-R™ and therefore do not require the use of a building paper or a housewrap as a WRB. When a WRB is not needed, these Dow foam sheathings may be installed according to standard installation instructions for foam sheathing from Dow. Be sure products and installation instructions meet code requirements for your particular location. Note: STYROFOAM™ WEATHERMATE™ and STYROFOAM™ WEATHERMATE™ Plus Housewraps have already qualified as water-resistive alternatives to the prescribed felt (see Evaluation Reports NER-593 and NER-640 for approved alternative).

CAUTION: This product is combustible. Protect from high heat sources. A protective barrier or thermal barrier may be required as specified in the appropriate building code. For more information, consult MSDS, call Dow at 1-866-583-BLUE (2583) or contact your local building inspector. In an emergency, call 1-989-636-4400 in the U.S. or 1-519-339-3711 in Canada.

Building and/or construction practices unrelated to building materials could greatly affect moisture and the potential for mold formation. No material supplier including Dow can give assurance that mold will not develop in any specific system.

a proud partner of



www.dowbuildingsolutions.com

FOR TECHNICAL INFORMATION: 1-866-583-BLUE (2583)

FOR SALES INFORMATION: 1-800-232-2436

THE DOW CHEMICAL COMPANY

Dow Building Solutions • 200 Larkin • Midland, MI 48674



Printed in U.S.A.

Form No. 179-07152X-0310MCK

McKAY203721

