

# Planning Your Metallaire™ Ceiling



## Step 1: Select Your Style

All styles are available in 24-in x 24-in suspended (drop) panels or 24-in x 48-in nail-up (surface mount) panels.



### SMALL PANELS

24-in x 24-in  
SUSPENDED (DROP)  
5422204L

24-in x 48-in  
NAIL-UP (SURFACE MOUNT)  
5424204N



### FANS

24-in x 24-in  
SUSPENDED (DROP)  
5422207L

24-in x 48-in  
NAIL-UP (SURFACE MOUNT)  
5424207N



### SMALL FLORAL CIRCLE

24-in x 24-in  
SUSPENDED (DROP)  
5422209L

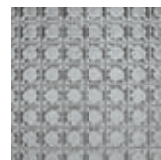
24-in x 48-in  
NAIL-UP (SURFACE MOUNT)  
5424209N



### VINE

24-in x 24-in  
SUSPENDED (DROP)  
5422210L

24-in x 48-in  
NAIL-UP (SURFACE MOUNT)  
5424210N



### MEDALLION

24-in x 24-in  
SUSPENDED (DROP)  
5422234L

24-in x 48-in  
NAIL-UP (SURFACE MOUNT)  
5424234N



### LARGE FLORAL CIRCLE

24-in x 24-in  
SUSPENDED (DROP)  
5422309L

24-in x 48-in  
NAIL-UP (SURFACE MOUNT)  
5424309N



### MEDIUM PANELS

24-in x 24-in  
SUSPENDED (DROP)  
5422320L

24-in x 48-in  
NAIL-UP (SURFACE MOUNT)  
5424320N



### HAMMERED TREFOIL

24-in x 24-in  
SUSPENDED (DROP)  
5422321L

24-in x 48-in  
NAIL-UP (SURFACE MOUNT)  
5424321N



### WREATH

24-in x 24-in  
SUSPENDED (DROP)  
5422503L

24-in x 48-in  
NAIL-UP (SURFACE MOUNT)  
5424503N



### BEAD

24-in x 24-in  
SUSPENDED (DROP)  
5422504L

24-in x 48-in  
NAIL-UP (SURFACE MOUNT)  
5424504N



### LARGE PANEL

24-in x 24-in  
SUSPENDED (DROP)  
5422505L

24-in x 48-in  
NAIL-UP (SURFACE MOUNT)  
5424505N



### HAMMERED BORDER

24-in x 24-in  
SUSPENDED (DROP)  
5422509L

24-in x 48-in  
NAIL-UP (SURFACE MOUNT)  
5424509N

## Step 2: Choose Your Finish



WH – WHITE



LS – LACQUERED STEEL



AM – CHROME



AR – BRASS



CP – COPPER

## Step 3: Select Your Accessories

### FILLER PANELS

5422235L 24-in x 24-in suspended (drop)—add color suffix letters

5424235N 24-in x 48-in nail-up (surface mount)—add color suffix letters

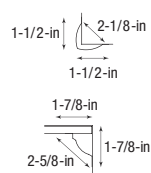
Filler panels are used around the edge of the room when less than full panels are needed.

Available in all 5 finishes and 24-in x 24-in suspended (drop) and 24-in x 48-in nail-up (surface mount) panels.

### CORNICES

A cornice is the finishing detail that can complement and accentuate the detail of your Metallaire™ ceiling.

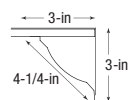
Cornices are available in 6 patterns, 5 finishes, and are 48-in in length.



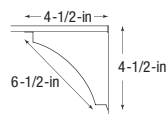
GIRDER NOSING 5400800M



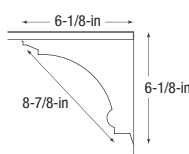
SMALL EGG & DART 5400810M



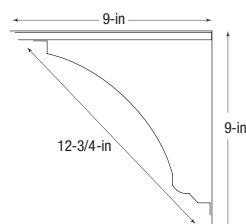
LARGE EGG & DART 5400802M



TORCH 5400705M



FLORAL 5400707M



TREFOIL 5400807M

## Step 4: Order Installation Material

### GRID KITS

5400G—add color suffix letters

Grid kits are available for 24-in x 24-in suspended (drop) installation. Colors available to coordinate with all Metallaire™ finishes. Grid kits install 64 square feet of ceiling panels per carton.

### CONE HEAD NAILS

5400N—add color suffix letters

Cone head nails are available in coordinating finishes to install a 24-in x 48-in nail-up (surface mount) ceiling system. Each carton of nails installs 200 square feet of ceiling panels.

### HOLD DOWN CLIP

5400HDC

Each carton contains enough clips to hold down 200 square feet of Metallaire suspended (drop) ceiling panels.