

SharkBite® PVC Fittings

DESCRIPTION

The SharkBite® push-to-connect fittings allow the user to connect pipe in seconds with relative ease.

FEATURES AND BENEFITS

Instant push-fit connection for increased ease-of-use:
No soldering, clamps, or unions required.

Fittings certified to 200 PSI and 200°F (93°C):
Proven durability and quality.

Tan collar fits copper tubing, and CTS CPVC and PEX:
Connects all three types in any combination.

White collar fits Schedule 40, 80, and 120 PVC pipe. Also fits Schedule 40 and 80 CVPC:
Not for use on galvanized iron pipe.

Integral tube liner for PEX installations:
Integrated design means no loose components, ensures secure, reliable connection.

Design certified and agency listed:
Inspector friendly, peace of mind!

Easy to disconnect and reusable:
Remove pipe

Design certified to NSF/ANSI 61 and NSF/ANSI 14 product standard for use in potable water and hydronic heating water distribution:
Quality engineered and manufactured.

Approved to be used underground and behind walls without access panels:
Designed for hydronic heating as well as potable water distribution.

No Primer or Glue required.
No waiting for glue to dry means quicker installation time for PVC pipe.

SPECIFICATIONS

The tube shall be inserted into the SharkBite PVC fitting in the first stage through a release collar and then through a stainless steel grab ring. The grab ring has teeth that open out and grip onto the tube. At the second stage the tube shall be pushed through an O-ring protector which aligns the tube. A specially formulated EPDM O-ring shall be compressed between the wall of the fitting and the tube before the end of the tube reaches the tube stop. Only when the tube has passed through the O-ring and reached the tube stop shall a secure joint be created. The fitting shall be a SharkBite PVC fitting.

CERTIFICATIONS

The SharkBite push-fit fittings have been designed, certified and listed to NSF/ANSI 61 and NSF/ANSI 372.



UIP4016



UIP140



UIP3008

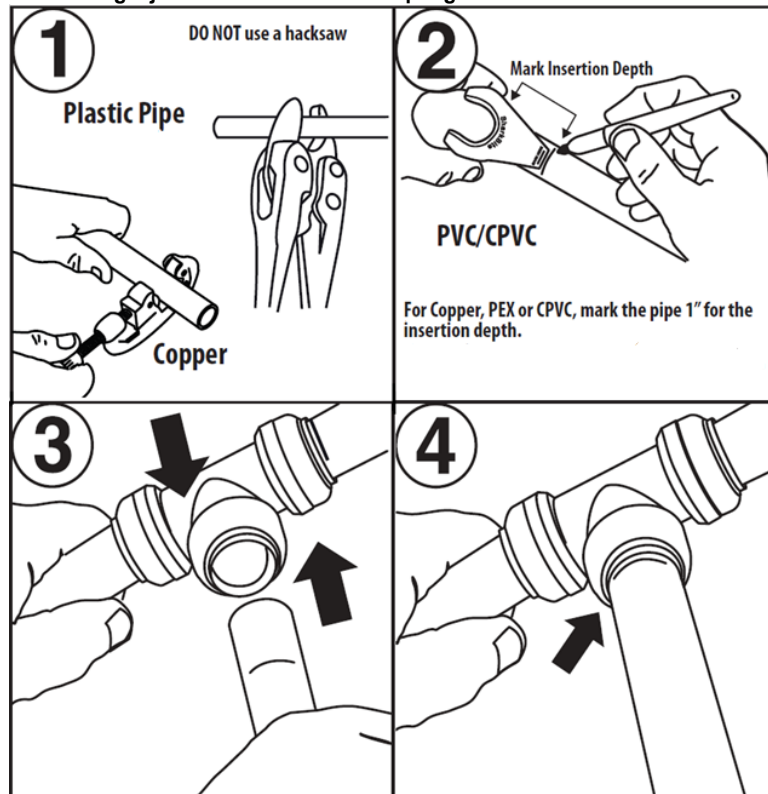


UIP371

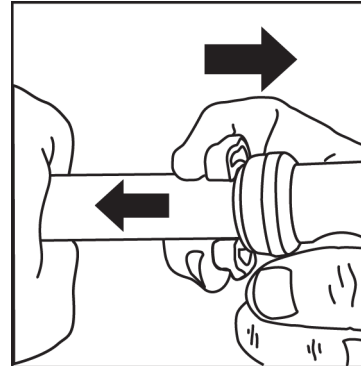
SharkBite[®] PVC Transition Fittings

TYPICAL INSTALLATION

Connecting a joint: SharkBite PVC Couplings and MNPT Connectors



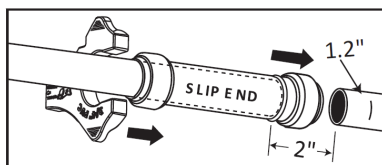
Disconnecting a joint



1. Place the SharkBite disconnect clip around the tube with the non-branded side against the release collar.
2. Push the clip against the release collar and pull the tube with a twisting action to release the tube.

Connecting a joint: SharkBite PVC Slip Couplings

1. Cut out the section of pipe needing repair. For $\frac{1}{2}$ " and $\frac{3}{4}$ ", cut no more than 2" in length. For 1", cut no more than 1.75" in length.
2. Mark the insertion depth.
3. On the side of the fitting marked "SLIP END," slide the PVC pipe into the fitting until it reaches the tube stop.
4. Place the SharkBite Disconnect Clip on the PVC pipe on the same side as the "SLIP END." As you are pressing the clip to release the fitting, slide the SharkBite fitting to meet the other PVC pipe.
5. Continue to slide the fitting until the non-slip end bottoms out. Ensure the fitting lines up with the mark you made. Also, ensure the Slip End of the fitting has not proceeded past the depth mark you originally made.



Connection a joint: SharkBite PVC Slip Tees

1. Cut out the section of pipe needing repair. If repairing copper or CPVC, cut out no more than 1" for $\frac{1}{2}$ " and $\frac{3}{4}$ " pipe, no more than 1.25" for 1" pipe. If repairing PVC, cut out no more than 1" in length.
2. Mark the insertion depth.
3. On the side of the fitting marked "SLIP END," slide the PVC pipe into the fitting until it reaches the tube stop.
4. Place the SharkBite Disconnect Clip on the PVC pipe on the same side as the "SLIP END." As you are pressing the clip to release the fitting, slide the SharkBite fitting to meet the other PVC pipe.
5. Continue to slide the fitting until the non-slip end bottoms out. Ensure the fitting lines up with the mark you made. Also, ensure the Slip End of the fitting has not proceeded past the depth mark originally made. This could cause unwanted blockage of the branch of the tee.



SharkBite® PVC Transition Fittings

SPECIFICATION DATA

Performance:

Maximum working pressure 200 psi*
 Maximum temperature 200°F (93°C)*
 Service Potable water

Materials:

Body DZR Lead Free Brass
 O-ring EPDM
 Grab ring Stainless steel
 Tube support liner Veradel

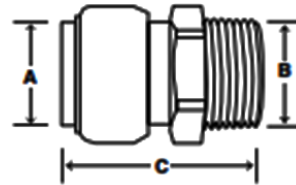
Finish:

Natural Brass

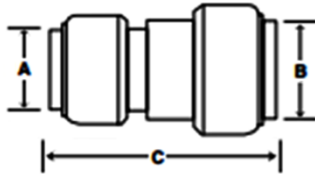
AVAILABLE CONNECTIONS

SharkBite 1/2", 3/4" & 1"

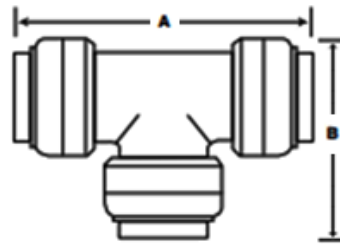
* Consult PVC pipe manufacturer for pressure and temperature limitations for your system



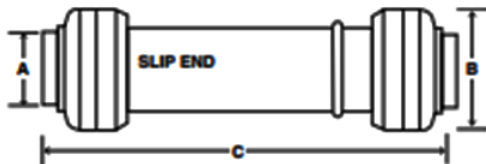
PVC x MNPT Threaded Adapter			
P/N	A	B	C
UIP120	1.26	1.26	1.85
UIP134	1.54	1.54	1.97
UIP140	1.85	1.85	2.40



CTS x PVC Transition Coupling			
P/N	A	B	C
UIP4008	1.26	1.26	2.13
UIP4016	1.54	1.54	2.40
UIP4020	1.85	1.85	2.68



Tees		
P/N	A	B
UIP364	3.27	2.09
UIP363	2.95	1.97
UIP371	3.27	2.32
UIP372	3.58	2.44
UIP375	3.94	2.76
UIP376	3.94	2.95



PVC x PVC Slip Repair Coupling			
P/N	A	B	C
UIP3008	1.26	1.26	4.33
UIP3016	1.54	1.54	4.49
UIP3020	1.85	1.85	4.45

