

OVE INTELLIGENT TOILET

Model 735H

USER MANUAL



Thank you for choosing OVE INTELLIGENT TOILET. Please read and understand this entire manual before attempting to assemble, operate or install this product.

CONTENTS

SAFETY NOTICE	1-2
PART LIST	3
INSTALLATION INSTRUCTIONS	4
CONTROLS DESCRIPTION	5
USAGE INSTRUCTIONS	6-8
CAUTION NOTES	9
CLEANING THE FILTER NET	10
DAILY MAINTENANCE	11
STORAGE GUIDELINES	12
SPECIAL MAINTENANCE	13
COMMON TROUBLESHOOTING	14
TECHNICAL SPECIFICATIONS	15
1 YEAR WARRANTY	16
CONTACT US	17

SAFETY NOTICE

ADMONITION



■ Leading causes of electric shock and fire.

Inside the product there is an electronic apparatus installed, please do not use it in wet place.

Please keep the electronic and electric plug away from water.



■ Preventing sanitation issues

Please use water suitable for human consumption



■ Do not disassemble yourself, electric shock, fire and leakage may result.

NOTICE



■ Preventing sanitation issues

- Please do not put any aromatzizer or cleaning product in the tank.

■ Preventing electric shocks and fire.

- Ensure electric power is AC 110V+/-10%
- Ensure a working ground connection in the electric outlet.
- Do not use damaged electrical wires and plugs.
- Ensure the electrical socket can bare a load over 1500W power.

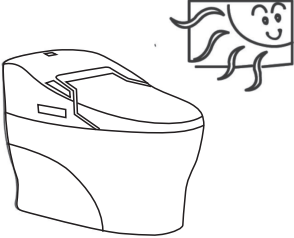


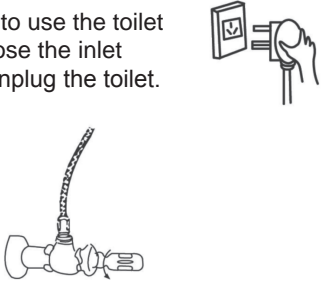



■ Preventing damages.

- USE OF ANY TOILET CLEANERS THAT ARE APPLIED IN THE TOILET TANK WILL VOID THE WARRANTY (In-tank cleaners can damage the rubber, metal and/or plastic components causing leaks and reducing performance).

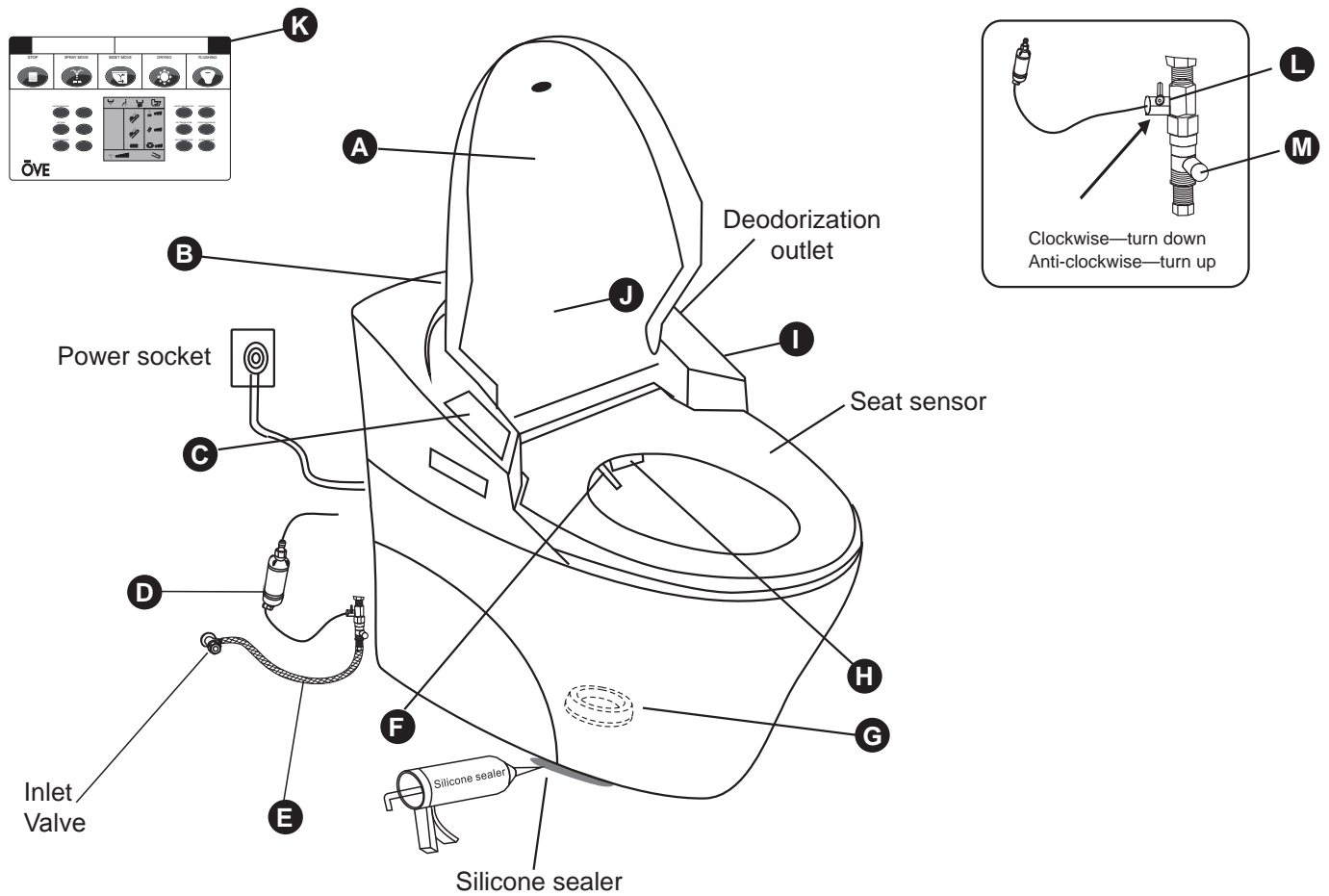
SAFETY NOTICE

USAGE GUIDELINES

PLEASE FOLLOW THE FOLLOWING GUIDELINES

<p>Do not leave the toilet exposed to the sun. Color fading and yellowing may result.</p> <p>Direct sunlight affects the good functioning of the remote.</p> 	<p>To prevent against power surge damages, make sure the ground is working in the power socket.</p> 
<p>Radio or transmitting devices may interfere with the toilet's remote control functions.</p> 	<p>If you do not plan to use the toilet for a long time, close the inlet water valve and unplug the toilet.</p> 
<p>If the power cut off during washing and the nozzle is still out: Do not push it back manually, it will revert to its resting position once the power is back ON.</p> 	<p>Do not use DC current. Only AC 110V with load capacity over 1500W are accepted.</p> <p>Do not use direct current. Only use alternative current.</p> 
<p>If power cuts off during nozzle self-cleaning, the water will continue to flow out. Manually close the inlet water valve of the toilet until power comes back ON.</p>	<p>Do not expose the toilet to freezing temperature. This will void the warranty and damage the piping.</p> 

PART LIST



PART#	DESCRIPTION	CODE
A	Seat cover	99TOI0014-OU
B	Electronic hardware	99TOI0039-OU
C	Control keypad (English & French) Control keypad (English & Spanish)	99TOI0040-OU 99TOI0046-OU
D	Water filter	99TOI0015-OU
E	Supply line	99TOI0041-OU
F	Nozzles	--
G	Seal ring	99TOI0043-OU
H	Drying air outlet	--
I	Flush buttons	--
J	Light indicator panel (English) Light indicator panel (French) Light indicator panel (Spanish)	99TOI0013-OU 99TOI0012-OU 99TOI0046-OU
K	Remote Control	99TOI0011-OU
L	Ball valve	99TOI0009-OU
M	Check valve	99TOI0010-OU

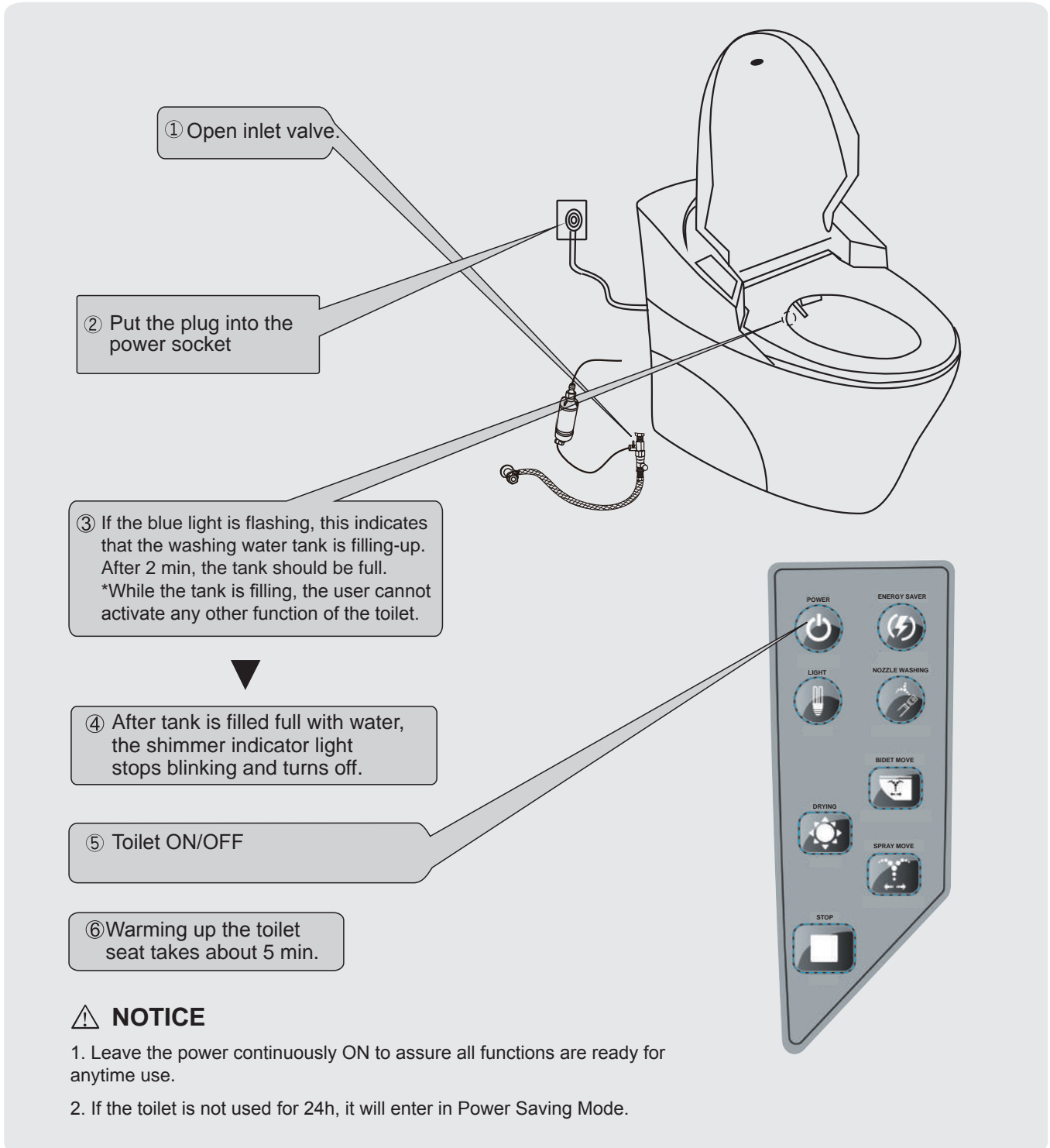
⚠ Admonition

Using any cement installation method will void the warranty and is not recommended!

INSTALLATION INSTRUCTIONS

INSTALLING THE SMART TOILET

WATER AND ELECTRIC SUPPLY INSTALLATION



① Open inlet valve.

② Put the plug into the power socket

③ If the blue light is flashing, this indicates that the washing water tank is filling-up. After 2 min, the tank should be full.
*While the tank is filling, the user cannot activate any other function of the toilet.

④ After tank is filled full with water, the shimmer indicator light stops blinking and turns off.

⑤ Toilet ON/OFF

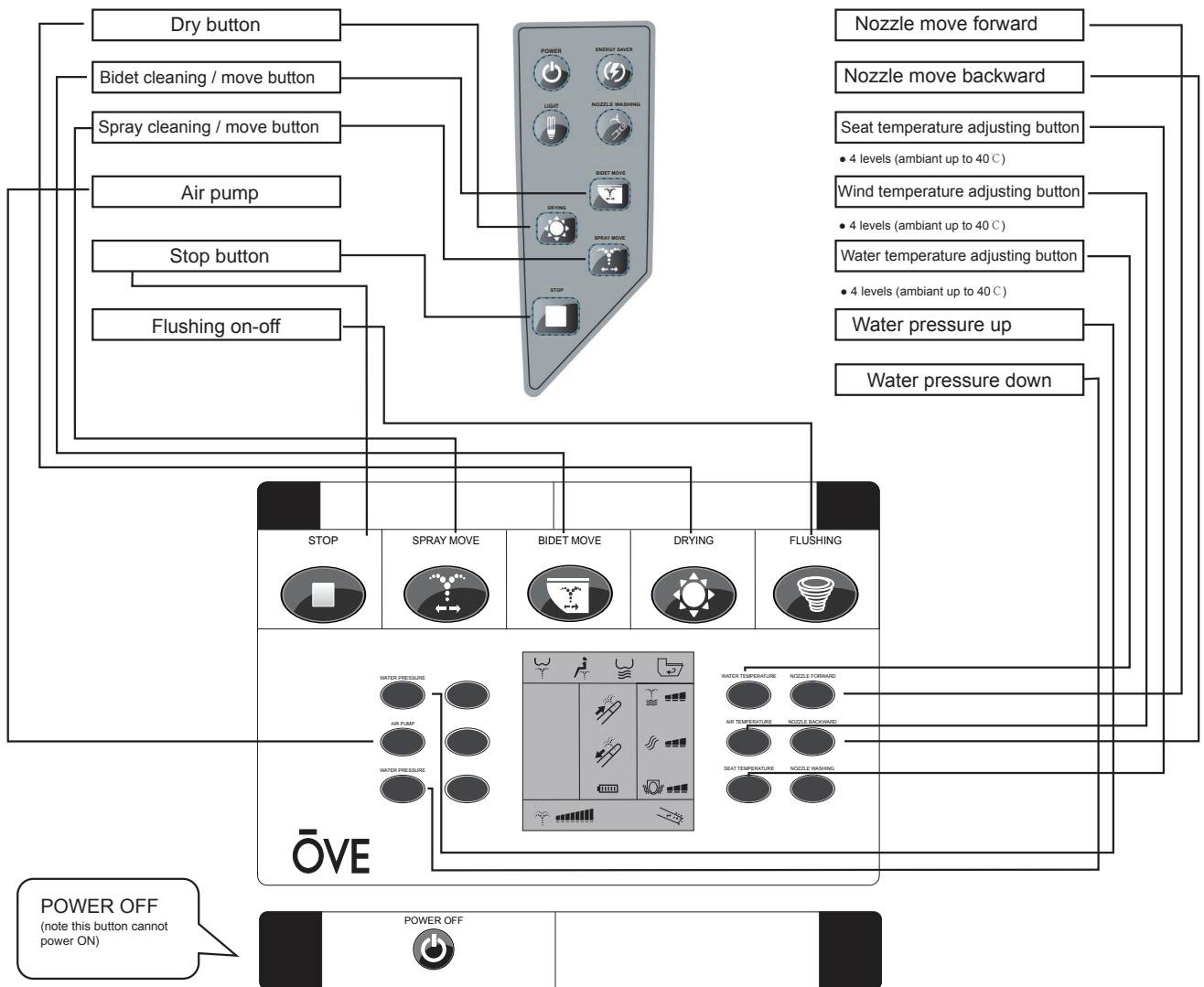
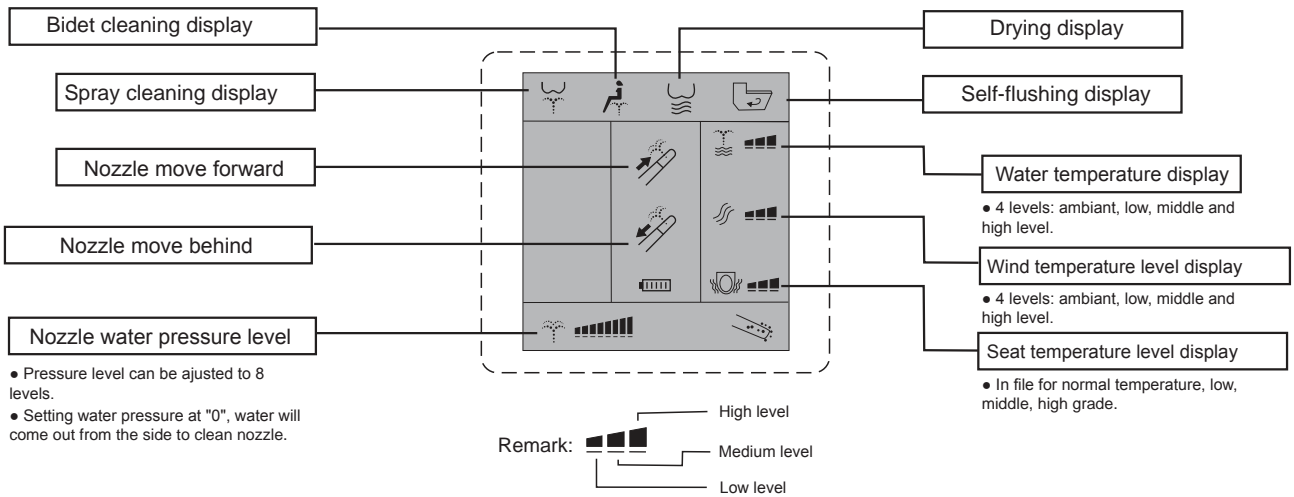
⑥ Warming up the toilet seat takes about 5 min.

NOTICE

1. Leave the power continuously ON to assure all functions are ready for anytime use.
2. If the toilet is not used for 24h, it will enter in Power Saving Mode.

The control panel features the following buttons: POWER, ENERGY SAVER, LIGHT, NOZZLE WASHING, DRYING, BIDET MOVE, SPRAY MOVE, and STOP.

CONTROLS DESCRIPTION



*Spray washing refers to the 5 holes nozzle of the toilet.
 *Bidet washing refers to the 1 hole nozzle of the toilet.

Use AA 1.5V batteries.
 Always replace the whole set of batteries at a time.

KEYPAD CONTROLS

ON/OFF



Press this button to turn the smart toilet ON and OFF.

ENERGY SAVER



When ON, the energy saving mode will decrease the electrical usage of the smart toilet when in stand-by. The seat will not be continuously pre-heated.

Light

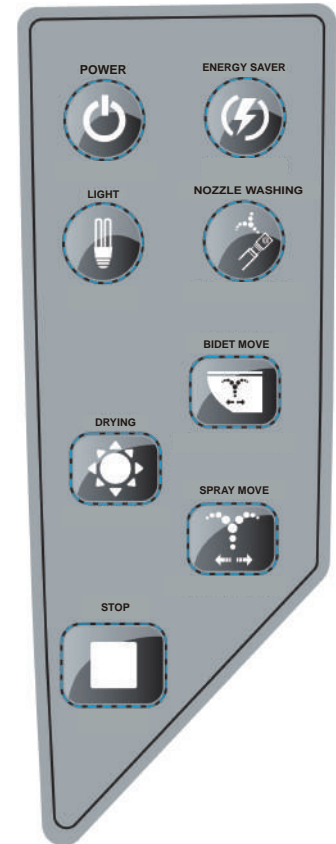


Press the light key, the shimmer on the intelligent toilet lights up; press it again, the light turns off.

Nozzle washing

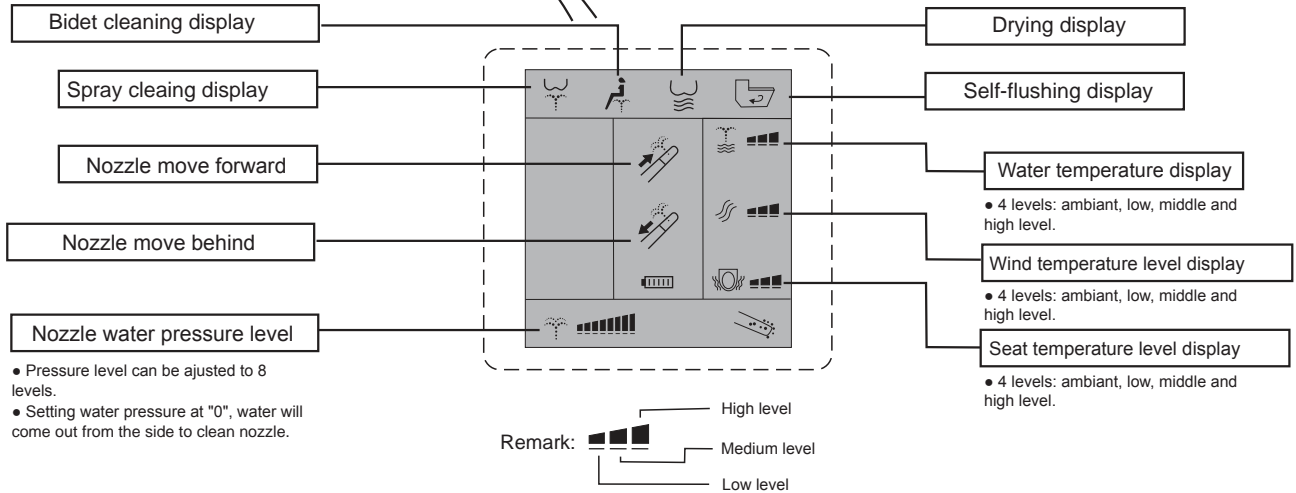


Press the nozzle cleaning key: the intelligent toilet pulls the Spray nozzle out. Press it again, it pulls out the Bidet nozzle; press it once more, the nozzles revert back and wash themselves.



USAGE INSTRUCTIONS

• All the settings from last usage are kept in memory for the next use. The remote control display will turn off automatically. To wake it up, press any button 1 time.



- Pressure level can be adjusted to 8 levels.
- Setting water pressure at "0", water will come out from the side to clean nozzle.

Spray cleaning

SPRAY MOVE



- Press once while sitting: the Spray nozzle cleaning session will start and the Remote Control display will flash.
- Press a second time: the Spray nozzle motion cleaning will start.

Bidet cleaning

BIDET MOVE



- Press once while sitting: the Bidet nozzle cleaning session will start and the Remote Control display will flash.
- Press a second time: the Bidet nozzle motion cleaning will start.

Warm wind drying

DRYING



- Press the drying key and the warm air drying session will begin.

Stop

STOP



- Press the stop button to stop any active function.
- Functions will automatically stop after 2 min of uninterrupted use.

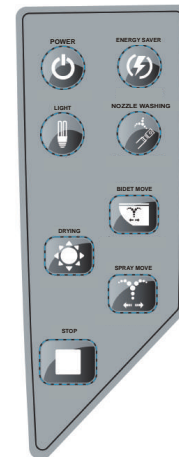
Flushing

FLUSHING

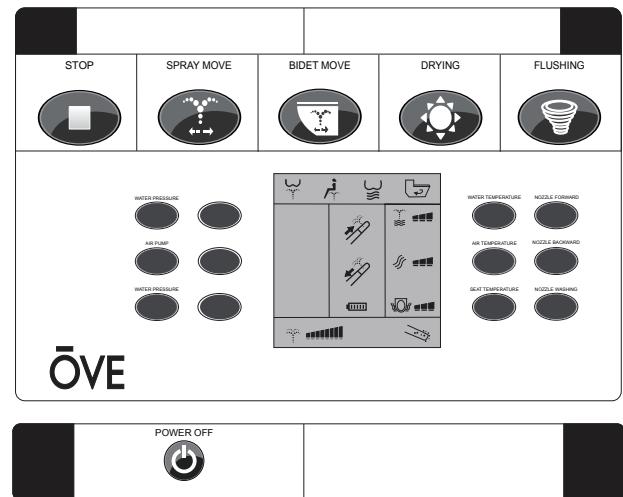


- Press the flushing button to initiate a flush. Note that once you sit up from the seat, automatic flushing will occur.

*After pressing any key on the Remote Control, a beeping sound will be heard if the signal as effectively reached the toilet.



Control keypad



The button only has power off function

Remote Control

USAGE INSTRUCTIONS

Automatic deodorization

The carbon filter catalyzed automatic deodorization begins when the user sits on the seat. The deodorization stops after 20 seconds of standing up.

In addition, the toilet seat is covered with a layer of active anti-microbial material.



Deodorizing



Anti-microbial

Damp fitting

This toilet seat has a soft close mechanism preventing noisy closing and opening.

*Do not attempt to close or open the cover abruptly, this may damage the soft close mechanism.



Noiseless soft close

AIR PUMP SUPERCHARGED

Press the AIR PUMP button on the remote control to activate a supercharged water pressure pump. This function will temporarily increase the water pressure for maximum cleanness.



Air pump supercharged

CAUTION NOTES

- If no one is sitting on the seat, the water cleaning and drying function are disabled.

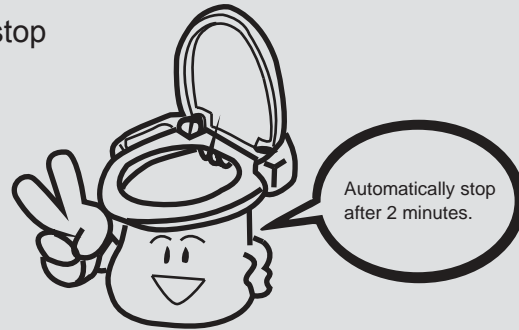


*Do not lean back on the seat cover once you are seated. This will damage the seatcover.

- Once the nozzle cleaning session is over, the nozzles will self-clean every time.



- The nozzle cleaning function will automatically stop after 2 minutes of uninterrupted use. Repress the button to activate again.



- **BEWARE:** If you stand up during the nozzle cleaning session, the nozzles will stop spraying after 2 seconds. Press the stop button before standing up.



STOP

- Once you press the drying button, the toilet will flush itself before the drying session begins. This will take 10 seconds.



DRYING

- Note that before every nozzle cleaning session, the nozzles will flush the cold water out and wash themselves. This will take 10 seconds and after, the cleaning session will begin.



Spray / move



Bidet / move

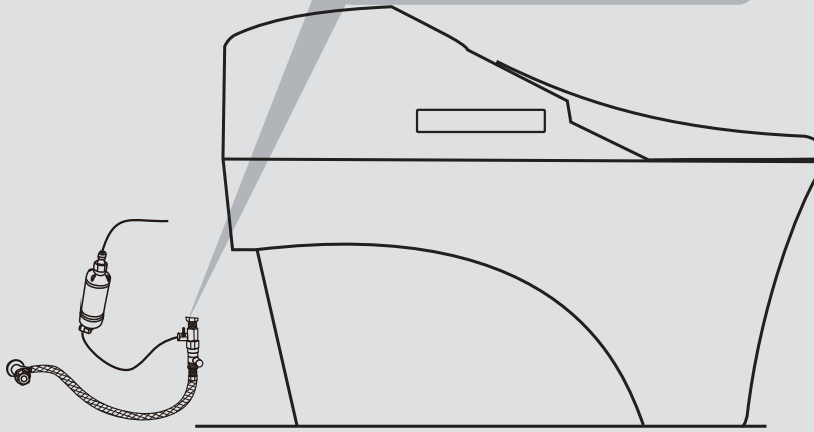
CLEANING THE NET OF THE FILTER

Cleaning the net

- When you notice a decrease in water pressure in the washing nozzles, clean the net and/or change the filter. Always make sure the tap water pressure complies with this toilet's requirements.

How to clean the net

1. Close water inlet valve



2. Screw out the net with the appropriate tool.

3. Clean the dirt with toothbrush or small brush.

4. Re-install and make sure no leakage occurs.

5. If the pressure is still too low, replace the filter.

DAILY MAINTENANCE

TOILET MAINTENANCE GUIDELINES

The toilet's seat is made of plastic. Please following the below guidelines to prevent damages.

Clean with warm water and a soft detergent.

Never use abrasive materials or chemicals.

Avoid spilling water on top of the electronic components behind the seat cover.



ADMONITION



Pull out plug

Before maintaining, please pull out the power plug.



Caution



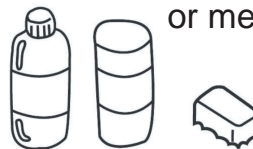
Please keep power socket away from detergent and water.



NOTICE



Caution



Thinner Volatilization Brush

Please don't use toilet strong detergent, abrasive liquid cleaners or metal brush.



Caution



Always use flex-hose. Never use extrusion piping.

(Maybe lead to leakage)

STORAGE GUIDELINES

Never use below freezing

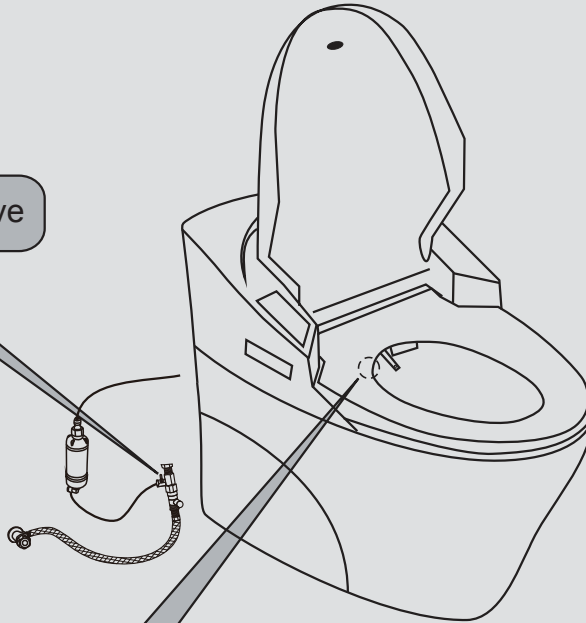
- Always keep the toilet in an environment above 5 C to prevent water freezing and damaging the inner plumbing.

Extended periods of no usage

- If the toilet is not used for an extended period of time, the water should be drained from the toilet's bowl and the washing water tank.

How to empty the toilet's water reserve

1. Close water inlet valve



2. Twist the washing water tank's emptying cap

3. Once the water has drained, twist the cap back into its closed position.

4. Finally, flush the toilet to remove the water in the main bowl. A sponge or towel may be used to remove the remaining water.

Pulling out the nozzles for manual washing

User may pull out the nozzle to wash it by hand

1. Nozzle manual cleaning



※ While no one is sitting on the seat: Open seat cover, press Nozzle Washin key. The first nozzle will come out to allow for manual cleaning.

※ Press the same key again: The second nozzle will come out.

※ Finally, press the key a 3rd time and the nozzle will go back into place.

2. Cleaning

※ Use warm water and soft cleaning products for daily toilet cleaning.

※ Do not pull on the nozzles!



3. Replacing product fittings

※ A replacement for the supply line can be found in any major plumbing retailer.

※ Depending on the water quality, water filter should be changed every year or so.



Flex hose



Filter

COMMON TROUBLESHOOTING

MALFUNCTION AND POTENTIAL ROOT CAUSES

Problem	Cause	Solution
Nozzle pulls out but no water	Press nozzle clean key by mistake	Press nozzle or bidet cleaning
Cleaning water don't spurt out	Inlet hose twisted leads to jam	Get rid of the hose twisted
	Tap water no pressure	Confirm tap water have pressure
Insufficient water pressure out of the nozzle	Clean nozzle jammed	Wash the spout
	Filter jammed	Replace filter
	Inlet net jammed	Wash the ne
Water temperature is not hot	The water temperature is set to ambient emperature	Reset warm water temperature by remote control
	Hot water reserve tank is empty	Press stop key and wait for about three minutes
The seat temperature is not hot	Seat temperature is set to ambient temperature	Increase the seat temperature setting with the remote control
	Energy saver is ON	Turn OFF energy saver
Wind temperature is low	Wind temperature is set to ambient	Increase the wind temperature setting with the remote control
Deodorization effect is not good	Filter is jammed by dust	Clean the filter with warm water
Big noise in deodorization		Clean the vent duck leading to the filter
Tank leakage	The water drain bolt is loosing	Tighten the water drain bolt

If none of the solution explained above work, call customer service right away.

Do not attempt to disassemble the toilet yourself or without customer service supervision.

TECHNICAL SPECIFICATIONS

Technical Specifications

Item		Content	
Specification		AC 120V. 1300W. 60HZ	
		1.2m insulated power cord	
Cleaning fitting	Water amount	Nozzle cleaning	Water amount adjustment 0.4-1.0 L/min (water pressure 0.19Mpa (27.6 psi))
		Bidet cleaning	Water amount adjustment 0.5-1.0 L/min (water pressure 0.19Mpa (27.6 psi))
	Water temperature		Temperature adjustment : from ambient temperature to 40 C
	Heater capacity		AC 120V. 1000W. 60HZ
	Warm water capacity		1.5L
	Cleaning method		Nozzle cleaning (5 jet) or Bidet cleaning (1 jet)
	Safe fitting		Temperature safety fuse integrated. Toilet will shut down if temp. is out of specs.
	Prevent reflux		Anti-reflux valve ntegrated
Drying fitting	Warm wind temperature		From ambient temperature to 55 C
	Wind speed		5 M/S
	Heater capacity		AC 120V. 300W. 60HZ
	Safe fitting		Temperature fuse
Heating seat	Seat temperature		Temperature adjustable scope: from normal temperature to 40 C
	Heater capacity		AC 120V. 40W. 60HZ
	Safe fitting		Prevent from temperature too high
Odor elimination	Filter		Eliminates odors through activated carbon filtering
	Wind speed		3 M/S
Water supply pressure		Lowest water pressure is 0.1Mpa (14.5 psi), highest water pressure is 0.5Mpa (72.5 psi)	
Water supply temperature		10-35 C	
Ambiant temperature		10-40 C	
Remote control batteries		2 AA batteries (1.5V)	
Product's size		800x420x600mm	
Outer carton's size		900x500x700mm	

1 YEAR WARRANTY

LIMITED 1 YEAR WARRANTY

The DISTRIBUTOR warranty is valid for a period of 1 year after purchased. Improper use of this product or any deviation to the general guidance given in the user manual will void the warranty. This non-transferable warranty applies only to the original purchaser and proof of purchase is required for all claims.

This warranty applies to the DISTRIBUTOR toilet installed for residential use only.

The DISTRIBUTOR warrants that, when installed in accordance with the Recognized Plumbing Industry Practice, the toilets are free of manufacturing defects for a period of one (1) year from the date of purchase.

The DISTRIBUTOR will repair or replace the damaged product or parts only if they were installed and used in a proper way according to this user manual.

Before accepting to repair or replace the product, the DISTRIBUTOR is entitled to send a representative to inspect the product. We will offer free charge service for inspecting, repairing and replacing for items within this warranty period; However the freight charges are the customer's responsibility.

INFORMATION ABOUT YOUR WARRANTY COVERAGE

This warranty does not cover damages or failure attributable to:

- Toilets installed with obvious visual defects.
- Rough handling or improper operation.
- The presence of sediment or impurity in the water supply system used.
- Defects or damages caused by installation that does not comply strictly with the instructions set forth in the Recognized Plumbing Industry Practice.
- Defects or damage to toilets caused by severe accidents (e.g. fire, electric surge, etc.)
- Damage caused by flooding or standing water from leaking pipes, faucets, household appliances, etc.; Up to and including flooding and any damage caused by acts of God.

NOTES ON WARRANTY

This warranty applies only to the original purchaser and installation site and is not transferable.

FOR WARRANTY SERVICE

- ▶ To make a claim, contact the DISTRIBUTOR no later than 30 days following the date of discovery or detection of defect.
- ▶ Proof of purchase, such as the bill of sale is mandatory when requesting warranty service.
- ▶ The DISTRIBUTOR reserves the right to designate a representative to inspect the vanity for analysis.
- ▶ No unauthorized person, installer, dealer, agent or employee of the DISTRIBUTOR or any representative is entitled to assume any liability on behalf of the DISTRIBUTOR relating to the sale of this product or has the authority to increase or alter the obligations or limitations of this warranty.

CONSUMER RESPONSIBILITIES

- The DISTRIBUTOR does prohibit the use of harsh abrasive cleansers on any of its products. Harsh cleansers will damage the inner workings of the toilets.
- For daily maintenance, use a wet cloth and a soft liquid cleaner.
- Never use abrasives or cleaners containing acetone, chlorine or strong bleach, scrapers, metallic brushes, nor other objects or products which can graze or tarnish surfaces.

CONTACT US

Save this manual for future reference
Conservez ce manuel pour usage ultérieur
Conserve este manual para futura referencia



HEAD OFFICE / SIÈGE SOCIAL / OFICINA PRINCIPAL
2800 Etienne Lenoir, Laval
Quebec H7R 0A3 Canada

Customer service / Service à la clientèle / Service al cliente
Tel.: 1-866-839-2888
Fax: 1-866-922-9990
customerservice@ovedecors.com

*8:00 am - 5:00 pm E.S.T Monday - Friday
8 h à 17 h HNE, du lundi au vendredi
8 h a 17 h HDE, de lunes a viernes*

KEEP THIS INFORMATION
CONSERVEZ CES INFORMATIONS
CONSERVE ESTA INFORMACIÓN

Purchase date
Date d'achat
Fecha de compra

Product Tracking Reference
Suivi et référence du produit
Numero de referencia

OVE^{TM/NC}
SMART TOILET

