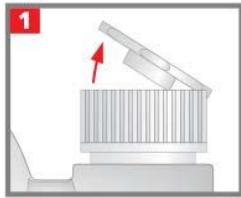
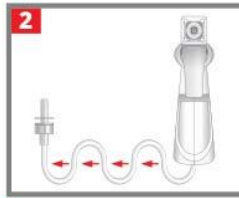


# WET & FORGET OUTDOOR

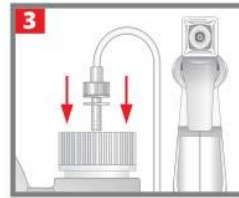
## HOW TO ATTACH THE SPRAYER NOZZLE



**1.** Remove Sticker.  
Open flip cap.



**2.** Hose is coiled inside sprayer. Pull out & fully extend (approx 36in).



**3.** Firmly insert red hose tip.

**NOTE:** Once sprayer is connected, transport upright as product may leak through cap's breather hole.

## APPLICATION TIPS

**Surface Preparation:** Brush off any debris from the surface being treated. Apply Wet & Forget Outdoor to a dry surface. Saturate the surface completely with Wet & Forget to remove moss, mold, mildew & algae stains.

**Ideal Environment:** For best results, apply Wet & Forget on a cool dry day with no chance of rain for 4-5 hours after application- morning is best. This will ensure the surface being treated stays wet for an extended period of time giving Wet & Forget more time to work.

**Temperature:** Temperatures should be above 32 degrees during application and for 4-5 hours after application. It's best to apply on a cool day, or during the coolest part of warmer days, to avoid rapid evaporation.

**Additional Assistance:** Vertical surfaces or covered porches without the necessary exposure to the elements might require some assistance using either a water hose or a light brushing. If an area is particularly bad, re-apply Wet & Forget approximately one month after the first application.

**Maintenance Applications:** After the stains have disappeared, use Wet & Forget as a maintenance tool. Re-apply at the first sign of new growth to keep stains from reappearing. In most cases, an annual application of Wet & Forget will keep surfaces clean.

**Treating Moss:** To get rid of moss, completely saturate the moss making sure Wet & Forget soaks through and comes in contact with the surface beneath the moss. Over the next few days or weeks, you'll notice the moss turning brown, curling up and detaching from the surface. The wind and rain will help wash away any remaining moss.

**Coverage Area:** 64oz. ready-to-use formula coverage area is between 60-180 sq. ft. depending upon the porosity and amount of staining. For example, porous surfaces like concrete will be on the lower range of coverage. Painted surfaces will be on the higher range of coverage.