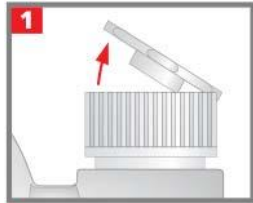
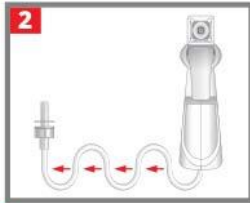


WET & FORGET *Shower*

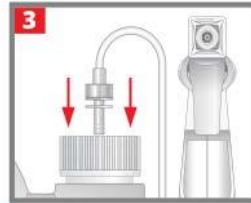
HOW TO ATTACH THE SPRAYER NOZZLE



1. Remove Sticker.
Open flip cap.



2. Hose is coiled inside sprayer. Pull out & fully extend (approx 36in).



3. Firmly insert red hose tip.

NOTE: Once sprayer is connected, transport upright as product may leak through cap's breather hole.

APPLICATION TIPS

Weekly Application: After showering, spray Wet & Forget Shower on fixtures, shower curtains, enclosures, shower glass, tiles and tubs. Then simply rinse surfaces before or during your next shower.

Starting with a Dirty Shower: If you're starting with an extremely dirty shower, no problem! Wet & Forget Shower goes to work on contact eliminating soap scum, grime, oils, mold and mildew stains. Simply apply Wet & Forget Shower after the last shower of the day and let it sit until the next day. Rinse the shower and, if necessary, give it a quick wipe-down. If there are still signs of shower grime, repeat the same routine until clean. No scrubbing required! Once you achieve a clean shower, you'll only need to apply Wet & Forget Shower one time per week to maintain a clean, fresh shower.

Tough-to-Reach Areas: Wet & Forget Shower is equipped with a remote-spray trigger that allows you to pivot the trigger into any position to get to those tough-to-reach areas. Go ahead turn the sprayer upside-down — you'll get the same product flow that you'd get in the upright position. The Wet & Forget Shower spray trigger has the ability to spray up to 10 feet allowing you to clean those not so easy-to-reach areas.

Where to Use: We always recommend testing Wet & Forget Shower in an inconspicuous area prior to using.

Enclosures: Showers, Shower Glass.

Fixtures: Brass, Chrome, Bronze, Stainless, Nickel.

Shower Curtains: Vinyl, Rubber, Nylon, Plastic.

Tiles: Ceramic, Porcelain, Mosaic, Slate, Granite.

Showers & Tubs: Acrylic, Porcelain, Fiberglass, Granite, Slate, Glass Tiles, Natural Stone.

Sinks & Toilets*: Acrylic, Porcelain, Granite.

* Require a wipe down before next use. **Wet & Forget Shower is not recommended for use on natural marble.** Test in an inconspicuous area if you have dark tiles and hard water to avoid highlighting calcium deposits.