



AquaSource® is a registered trademark of LF, LLC. All Rights Reserved.

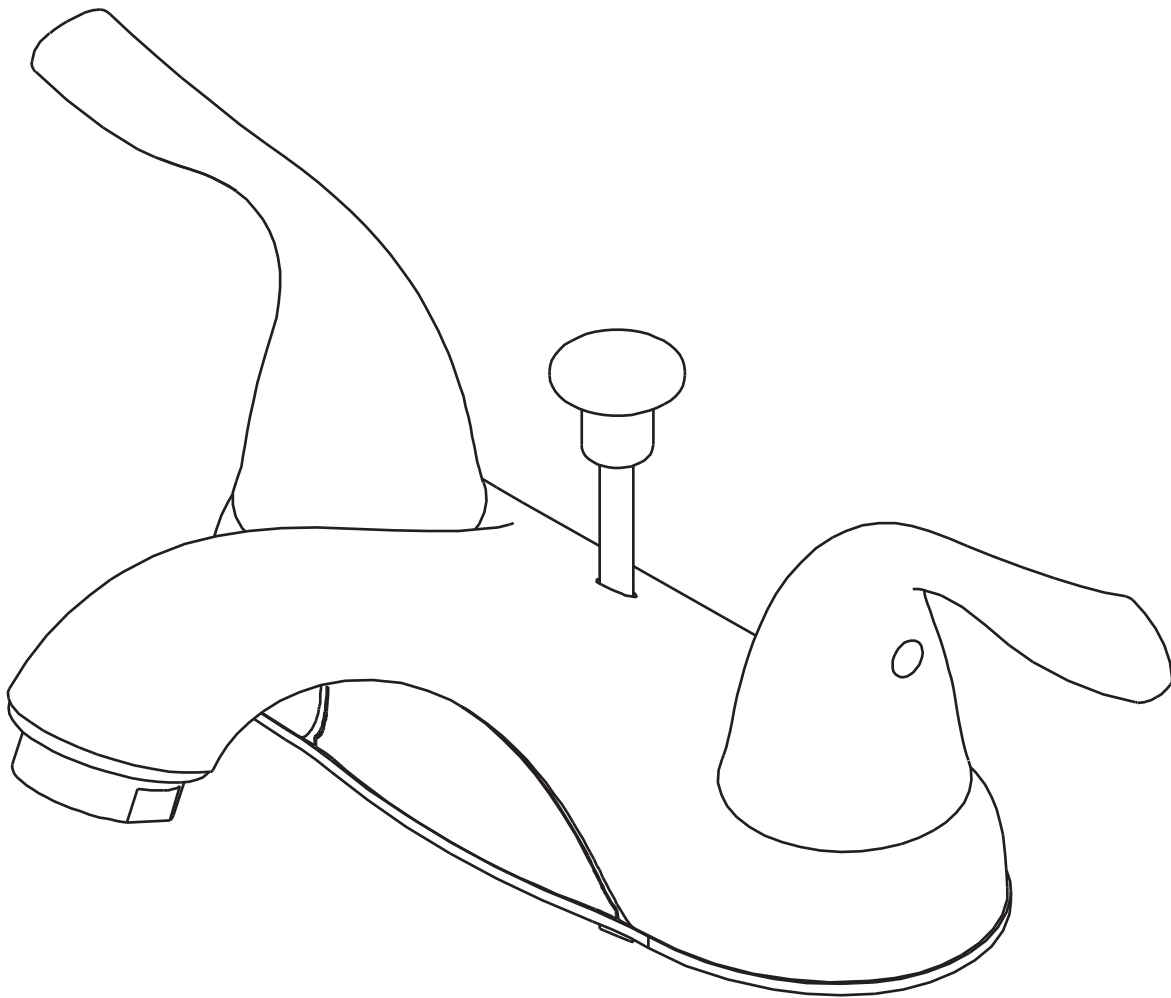
ITEM #0007148/0007149

## TWO HANDLE LAVATORY FAUCET

MODEL #F5120000NP/F5120000CP

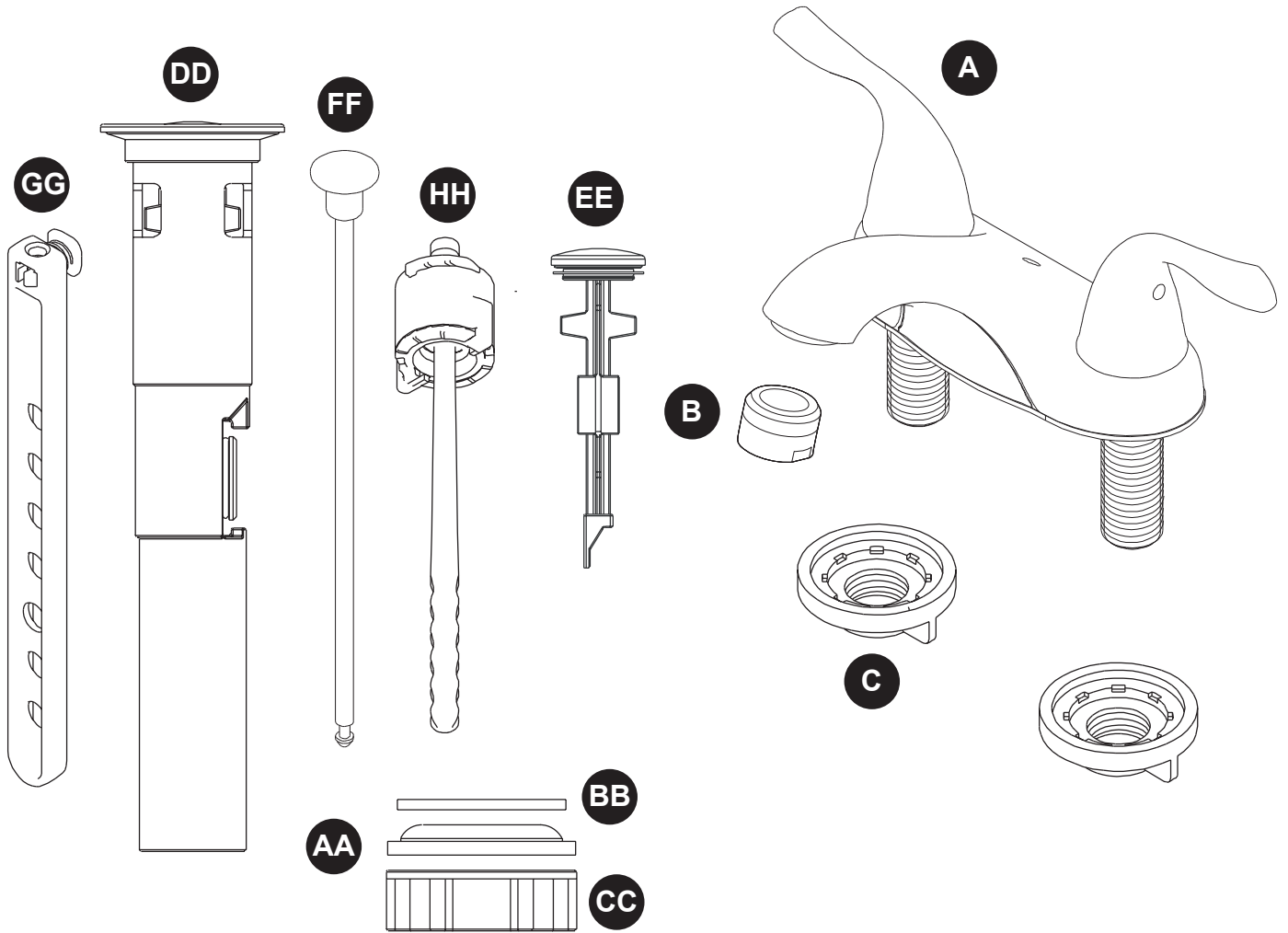
Français p. 1

Español p. 1



**Questions, problems, missing parts?** Before returning to your retailer, call our customer service department at 1-866-417-7564, 8 a.m. - 8 p.m., EST, Monday - Friday.

# PACKAGE CONTENTS



PART	DESCRIPTION	QUANTITY
A	Faucet	1
B	Aerator (Pre-assembled)	1
C	Lock Nuts	2
AA	Rubber Washer	1
BB	Washer	1
CC	Nut	1
DD	Pop-Up Body	1
EE	Main Plunger	1
FF	Lift Rod	1
GG	Lift Rod Strap	1
HH	Ball Rod	1

## WARNINGS AND CAUTIONS

---

- Follow these installation instructions carefully. Proper installation is the installer's responsibility.
  - Failure to follow correct installation procedures can cause the faucet to become loose, which can result in serious injury.
  - The products should be installed by a locally licensed plumber.
  - This product is engineered to meet the EPA Watersense flow requirements. The flow rate is governed by the aerator. If replacement is ever required, be sure to request a Watersense compliant lavatory faucet aerator to retain the water conserving qualities of this product. The max flow rate of this product is 1.5GPM (5.7LPM) at 60PSI.
- **Do not put plumber's putty on threads.**

## PREPARATION

---

Before beginning assembly, installation or operation of product, make sure all parts are present. Compare parts with package contents list and diagram above. If any part is missing or damaged, do not attempt to assemble, install or operate the product. Contact customer service for replacement parts.

**Estimated Assembly Time: 12 minutes**

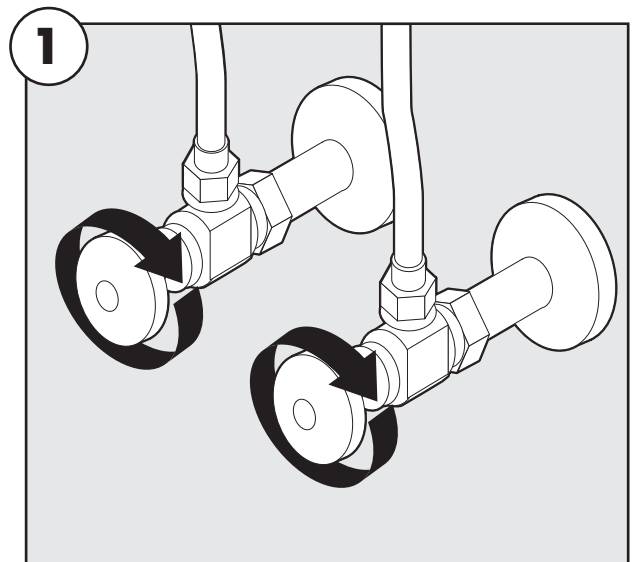
Tools Required for Assembly (not included): None.

**Helpful Tools: Adjustable Wrench**

## ASSEMBLY INSTRUCTIONS

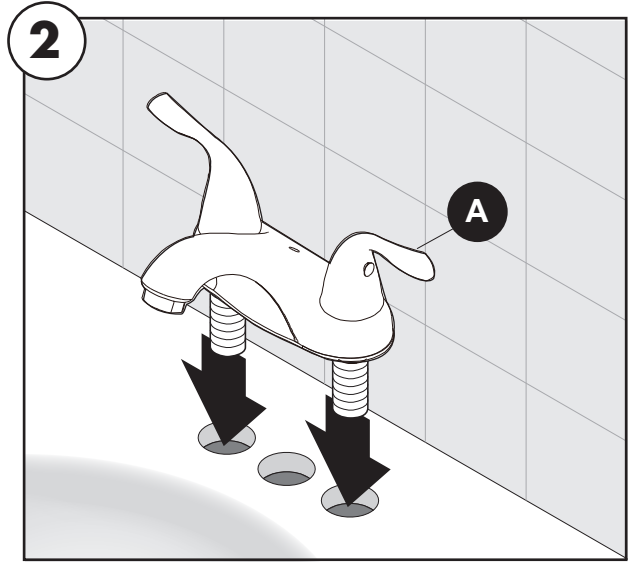
---

1. Turn off water supply.

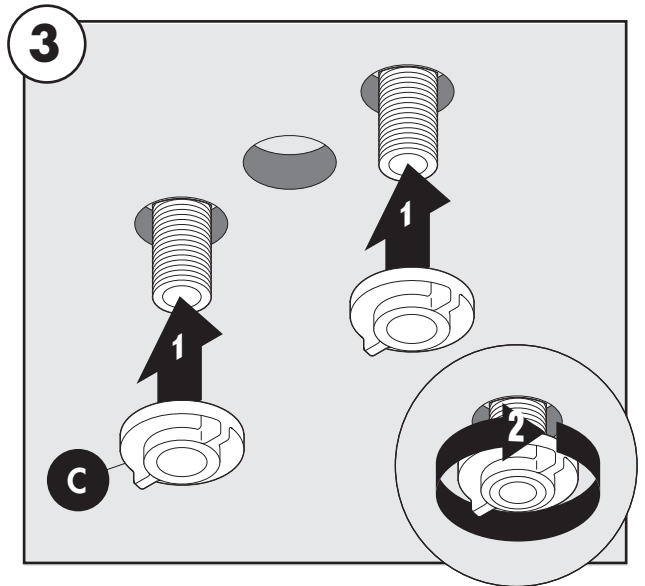


## ASSEMBLY INSTRUCTIONS

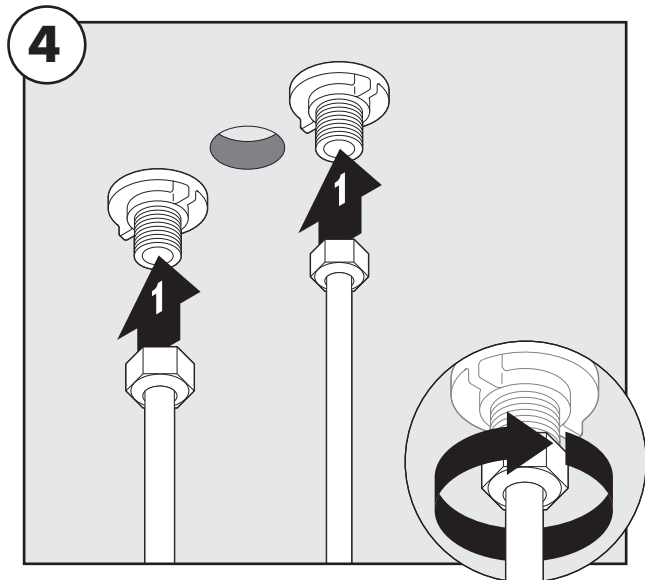
2. Install faucet (A) through top of sink.



3. Tighten lock nuts (C).



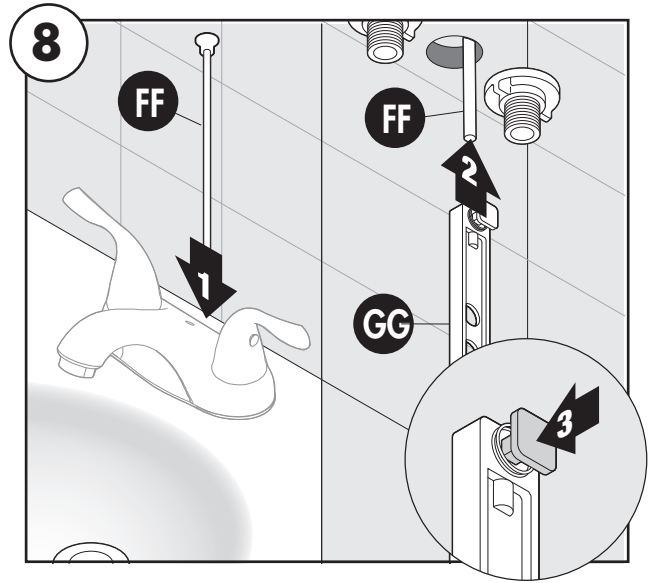
4. Attach water supply lines with coupling nuts (sold separately).



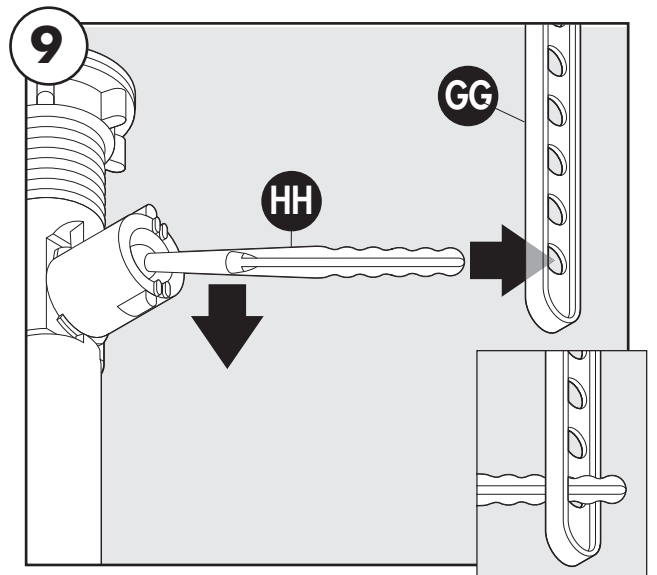


## ASSEMBLY INSTRUCTIONS

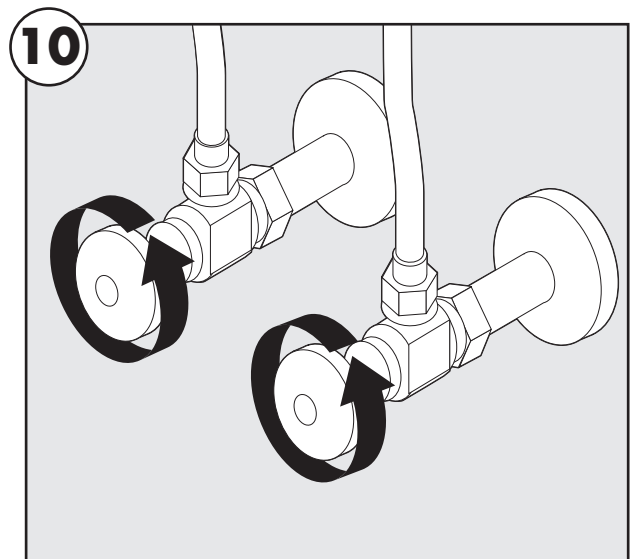
8. Insert lift rod (FF) through faucet and attach perforated strap (GG) to lift rod. Push button to allow lift rod to slide through. Release to lock.



9. Adjust ball rod (HH) to the down position. Attach to strap (GG).

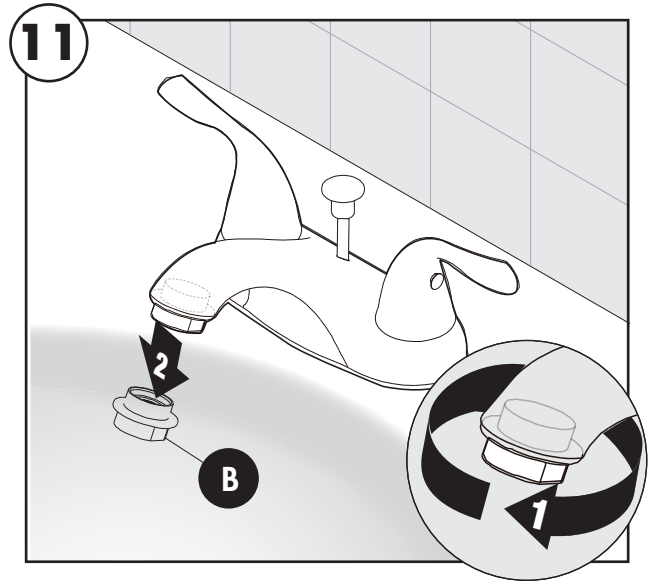


10. Turn on water supply.

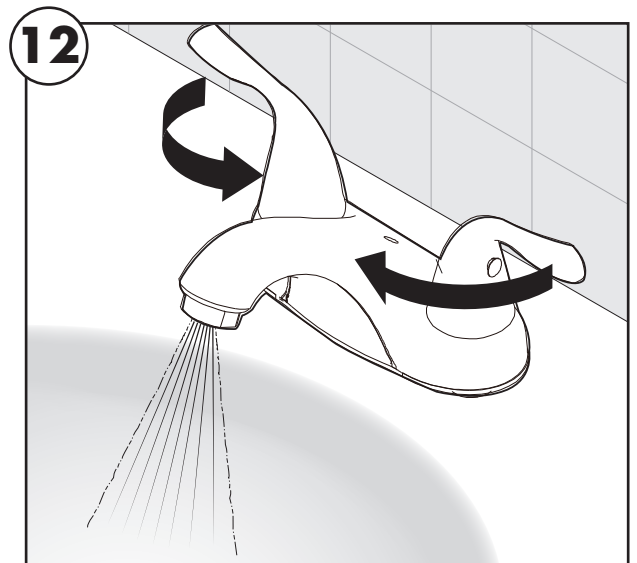


## ASSEMBLY INSTRUCTIONS

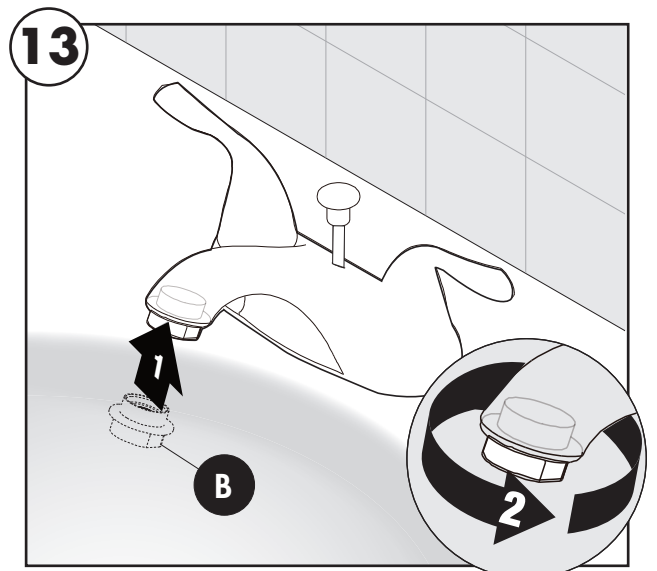
11. Remove aerator (B).



12. Flush out any debris and check for leaks around drain.



13. Replace aerator (B).



## CARE AND MAINTENANCE

---

- To protect and maintain the finish of your faucet, clean only with a soft, damp cloth.
- Do not use a detergent or cleanser that may harm the finish.
- Do not use plumber's putty on plastic components.

## TROUBLESHOOTING

---

**Questions, problems, missing parts?** Before returning to your retailer, call our customer service department at 1-866-417-7564, 8 a.m. - 8 p.m., EST, Monday - Friday.

PROBLEM	POSSIBLE CAUSE	CORRECTIVE ACTION
Leak from under handle.	Retainer nut has come loose. O-ring on cartridge is dirty or damaged.	Tighten the retainer nut. Clean or replace O-ring.
Aerator leaks or has an inconsistent water flow pattern.	Aerator is dirty or misfitted.	Unscrew the aerator to check rubber packing or replace the aerator.
Water will not shut off completely.	Rubber seat and spring is dirty or broken.	Remove handle and cartridge to check the rubber seat and spring. Clean or replace it.



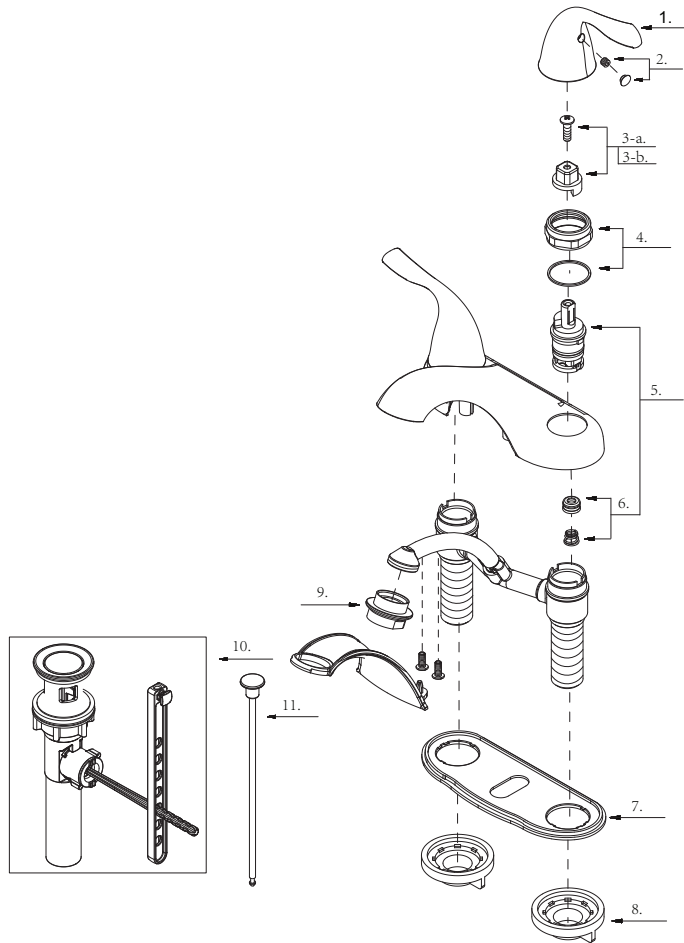
## **WARRANTY**

---

The manufacturer warrants this faucet to be free from defects in workmanship and material present at time of shipment from the factory for a limited lifetime from the date of purchase. This warranty applies only to the original purchaser. The manufacturer agrees to correct such defects at no charge or, at our option, replace the faucet with a comparable or superior model. To obtain warranty service, call our customer service department at 1-866-417-7564 for return authorization and shipping instructions. You may be required to present a copy of your sales receipt as proof of purchase. All cost of removal and reinstallation are the expressed responsibility of the purchaser. Any damage to the faucet by accident, misuse or improper installation, or by affixing accessories not produced by the manufacturer, are the purchaser's responsibility. The manufacturer assumes no responsibility whatsoever for faucet installation during the warranty period. There is no further expressed warranty. The manufacturer disclaims any and all implied warranties. The manufacturer shall not be liable for incidental, consequential or special damages arising at or in connection with product use or performance except as may otherwise be accorded by law. This warranty gives you specific legal rights, and you may also have other rights which vary from state to state. This warranty supersedes all prior warranties.

## REPLACEMENT PARTS LIST

For replacement parts, call our customer service department at 1-866-417-7564, 8 a.m. - 8 p.m., EST, Monday - Friday.



PART	DESCRIPTION	PART #
1	Metal Handle	A069860
2	Handle Cap	A66D558
3-a	Handle Adaptor-Cold	A66D563C
3-b	Handle Adaptor-Hot	A66D563H
4	Retainer Nut Assembly	A66D642
5	Cartridge Assembly	A66D636N
6	Seat & Spring Set	A663002
7	Putty Plate	A011383
8	Lock Nut Set	A504023
9	Aerator	A500039N-50
10	Pop-up Assembly	A556801
11	Lift Rod	A025535

\* Watersense Compliant Lavatory Faucet Aerator

Printed in China