

# 120 V Halogen / Incandescent Dimmer

Rated at 120 V ~ 60 Hz

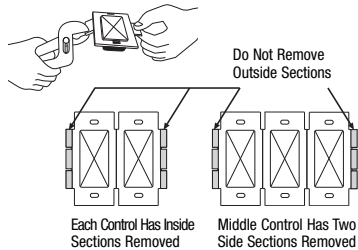
## Important Notes

### Please read before installing.

- Caution:** Use only with permanently-installed 120 V~ halogen or incandescent fixtures. To avoid overheating and possible damage to other equipment, do not use to control receptacles, fluorescent lighting fixtures, motor-driven appliances, or transformer-supplied appliances.
- Install in accordance with all national and local electrical codes.
- Only one dimmer can be used in a 3-way circuit.
- When no "grounding means" exist within the wallbox then the NEC® 2008, Article 404.9 allows a dimmer without a grounding connection to be installed as a replacement, as long as a plastic, noncombustible wallplate is used. For this type of installation, cap or remove the green ground wire on the dimmer and use an appropriate wallplate such as Claro® or Fassada® series wallplates by Lutron.
- For new installations, install a test switch before installing the dimmer.
- Protect dimmer from dust and dirt when painting or spackling.
- Recommended minimum load is 40 W.
- It is normal for the dimmer to feel warm to the touch during operation.
- Clean dimmer with a soft damp cloth only.** Do not use any chemical cleaners.

## Multigang Installations

When installing more than one control in the same wallbox, it may be necessary to remove all inner side sections prior to wiring (see diagram). If pre-installed, remove the Lutron® wallplate and wallplate adapter from dimmer. Using pliers, bend side section up and down until it breaks off. Repeat for each side section to be removed. Removal of dimmer side sections reduces maximum load capacity. Refer to chart below for maximum dimmer capacity.



## Dimmer Capacity Chart

Dimmer Rating	No sides removed	1 side removed	2 sides removed
600 W 1000 W	600 W 1000 W	500 W 800 W	400 W 650 W

## Technical Assistance

If you have questions concerning the installation or operation of this product, call the **Lutron Technical Support Center**. Please provide exact model number when calling.

**U.S.A. and Canada (24 hrs/7days)**  
1.800.523.9466

**México**  
+1.888.235.2910

**Other countries 8am – 8pm ET**  
+1.610.282.3800

Fax +1.610.282.6311  
<http://www.lutron.com>

## Limited Warranty

(Valid only in U.S.A., Canada, Puerto Rico, and the Caribbean.)

Lutron will, at its option, repair or replace any unit that is defective in materials or manufacture within one year after purchase. For warranty service, return unit to place of purchase or mail to Lutron at 7200 Suter Rd., Coopersburg, PA 18036-1299, postage pre-paid. **THIS WARRANTY IS IN LIEU OF ALL OTHER EXPRESS WARRANTIES, AND THE IMPLIED WARRANTY OF MERCHANTABILITY IS LIMITED TO ONE YEAR FROM PURCHASE. THIS WARRANTY DOES NOT COVER THE COST OF INSTALLATION, REMOVAL OR REINSTALLATION, OR DAMAGE RESULTING FROM MISUSE, ABUSE, OR DAMAGE FROM IMPROPER WIRING OR INSTALLATION. THIS WARRANTY DOES NOT COVER INCIDENTAL OR CONSEQUENTIAL DAMAGES. LUTRON'S LIABILITY ON ANY CLAIM FOR DAMAGES ARISING OUT OF OR IN CONNECTION WITH THE MANUFACTURE, SALE, INSTALLATION, DELIVERY, OR USE OF THE UNIT SHALL NEVER EXCEED THE PURCHASE PRICE OF THE UNIT.**

This warranty gives you specific legal rights, and you may have other rights which vary from state to state. Some states do not allow the exclusion or limitation of incidental or consequential damages, or limitation on how long an implied warranty may last, so the above limitations may not apply to you.

This product may be covered by one or more of the following U.S. patents: 5,262,678; 5,359,231; 5,637,930 and corresponding foreign patents. Lutron, Claro, Glyder and Fassada are registered trademarks of Lutron Electronics Co., Inc. NEC is a registered trademark of National Fire Protection Association, Quincy, Massachusetts. Sylvania is a trademark of Osram Sylvania, Inc. PHILIPS is a registered trademark of KONINKLIJKE PHILIPS ELECTRONICS N.V. © 2009 Lutron Electronics Co., Inc.

- Easy-to-follow Instructions
- Instrucciones Fáciles de Seguir

030-1108

Easy-to-follow  
Instrucciones  
Fáciles de Seguir

- Easy-to-follow Instructions
- Instrucciones Fáciles de Seguir

030-1108

Easy-to-follow  
Instrucciones  
Fáciles de Seguir

## English

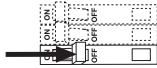
### Models:

600 W	1000 W
D-600P	AY-10P
D-600R	AY-10PNL
D-603P	AY-103P
DNG-600P	AY-103PNL
DNG-603P	GL-10P
GL-600	GL-1000
GL-600P	GL-103P
GL-603P	S-10P
LG-600	S-10PNL
LG-600P	S-1000
LG-603P	S-103P
S-600	S-103PNL
S-600P	TG-10P
S-600PNL	TG-10PNL
S-603P	TG-103P
S-603PNL	
SW-600	
SW-600P	
SW-603P	

## Installation

### 1 Turning OFF Power.

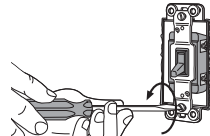
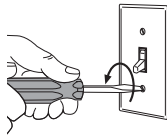
- Turn power OFF at circuit breaker (or remove fuse).



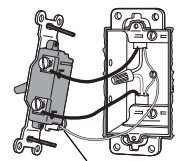
**Warning:** Shock Hazard. May result in serious injury or death. **Turn off power at circuit breaker before installing the unit.**

### 2 Removing Wallplate and Switch.

- Remove wallplate and switch mounting screws.
- Carefully remove switch from wall (**do not remove wires**).



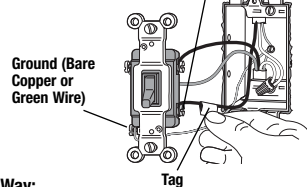
### 3 Identifying the Type of Circuit.



Ground (Bare Copper or Green Wire)

OR

Different-colored screw (Common). Actual location may vary.



Ground (Bare Copper or Green Wire)

Tag

#### Single-Pole:

Insulated wires connected to two screws of the same color. Replace with a Single-Pole dimmer. **See Step 5a when wiring.**

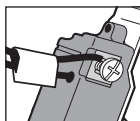
OR

#### 3-Way:

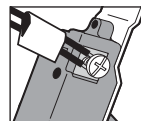
Insulated wires connected to three screws. One of these wires is connected to a screw of a different-color (not green) or labeled COMMON. **MARK** or **TAG** this wire to identify it when wiring. Replace with a 3-Way dimmer. **See Step 5b when wiring.**

### 4 Disconnecting Switch Wires.

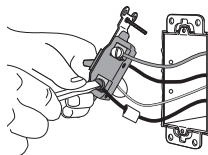
**Important Note:** Your wall switch may have two wires attached to the same screw (see illustrations below for examples). Tape these two wires together before disconnecting. Connect both wires to the dimmer wire in Step 5.



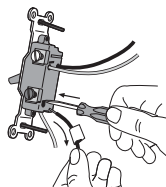
One wire in the backwired hole and one to the screw.



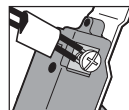
One continuous wire to the screw.



Screw Terminals: Turn screws to loosen.



Push-in Terminals: Insert screwdriver. Pull wire out.

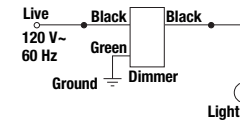
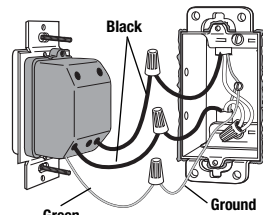


Looped Wire: Turn screw to loosen.

### 5 Wiring the Dimmer.

- For installations involving more than one control in a wallbox, refer to the section on Multigang Installations before beginning. **Note:** Wire location will vary by product. Reference wires by color, not location.

#### 5a - Single-Pole Wiring

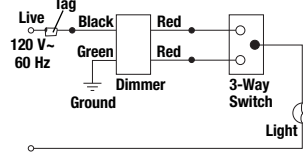
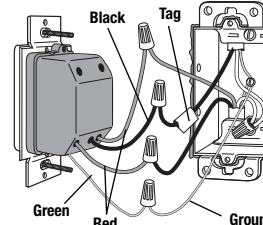


**Helpful Hint:** To use a 3-way or single-pole/3-way dimmer (one black and two red wires) in a single-pole application, cap off one of the red wires and follow instructions for single-pole wiring. (If the on/off switch works backwards, use the other red wire.)

- Connect the **green** dimmer ground wire to the bare copper or green ground wire in the wallbox. (See Important Note 4.)
- Connect one of the **black** dimmer wires to either of the wires removed from the switch.
- Connect the remaining **black** dimmer wire to the other wire removed from the switch.

*This operation has now been completed.*

#### 5b - 3-Way Wiring

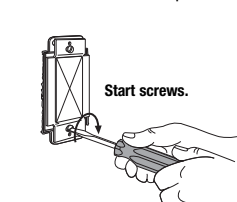


- **Note:** Only one dimmer can be used in a 3-way circuit.
- Connect the **green** dimmer ground wire to the bare copper or green ground wire in the wallbox. (See Important Note 4.)
- Connect the **black** dimmer wire to the wire removed from the different-colored screw on the switch (marked or tagged wire). Remove tag from wire.
- Connect one of the **red** dimmer wires to either of the remaining wires removed from the switch.
- Connect the remaining **red** dimmer wire to the remaining wire removed from the switch.

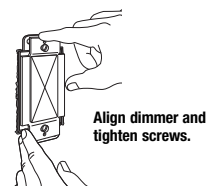
*This operation has now been completed.*

### 6 Mounting Dimmer to Wallbox.

- Form wires carefully into the wallbox, mount and align dimmer.
- Install wallplate.



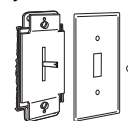
Start screws.



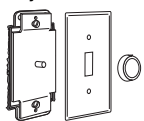
Align dimmer and tighten screws.

**Note:** To install a traditional style wallplate, firmly pull the Glyder® or Rotary knob to remove it. Install the wallplate and re-attach the knob.

Glyder



Rotary



### 7 Turning Power ON.

- Turn power ON at circuit breaker (or replace fuse).



**LUTRON.**

Lutron Electronics Co., Inc.  
7200 Suter Road  
Coopersburg, PA 18036-1299, U.S.A.  
Made and printed in U.S.A.  
9/09 P/N 030-1108 Rev. A

