

Carlton® Non-Metallic Switch, Outlet and Ceiling Boxes



Carlton®
PVC
Blue PVC Boxes

Carlton
SUPERBLUE®
PVC Boxes

Carlton®
PC
Black Polycarbonate Boxes
Vapor Barrier PC Boxes
Ceiling Boxes

Carlton®
PH
Brown Phenolic Boxes

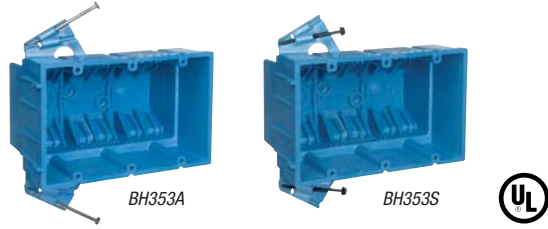
Carlton®
LV
Orange Low Voltage
Structured Cable
Management System
(SCMS)

Carlton SUPERBLUE[®] SuperBlue™ Boxes



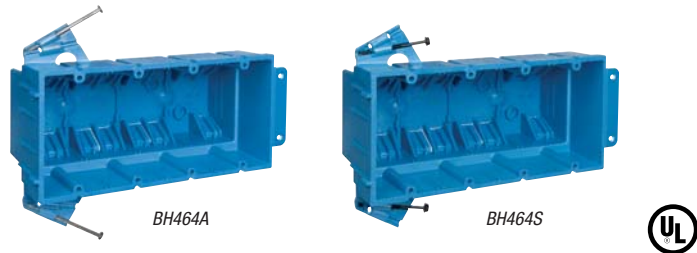
New Work

Three-Gang 53 Cu. In.



CAT. NO.	SIZE CU. IN.	MOUNTING MEANS	DESCRIPTION	DIMENSIONS (IN.)	STD. CTN. QTY.
BH353A	53.0	Nails	Three-gang; integral clamps	5 ⁷ / ₈ L x 3 ³ / ₄ W x 3 ¹ / ₂ D	24
BH353S	53.0	Screws	Three-gang; integral clamps	5 ⁷ / ₈ L x 3 ³ / ₄ W x 3 ¹ / ₂ D	24

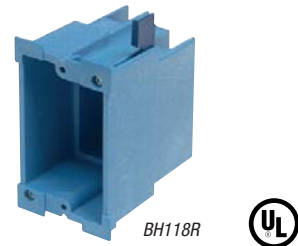
Four-Gang 64 Cu. In.



CAT. NO.	SIZE CU. IN.	MOUNTING MEANS	DESCRIPTION	DIMENSIONS (IN.)	STD. CTN. QTY.
BH464A	64.0	Nails and molded bracket	Four-gang; integral clamps	7 ³ / ₄ L x 3 ⁷ / ₈ W x 3 ¹ / ₂ D	24
BH464S	64.0	Screws and molded bracket	Four-gang; integral clamps	7 ³ / ₄ L x 3 ⁷ / ₈ W x 3 ¹ / ₂ D	24

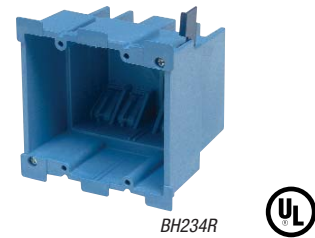
Old Work

One-Gang 18.0 Cu. In.



CAT. NO.	SIZE CU. IN.	MOUNTING MEANS	DESCRIPTION	DIMENSIONS (IN.)	STD. CTN. QTY.
BH118R	18.0	Mounting ears & swing clamps	One-gang; integral clamps	3 ⁷ / ₈ L x 2 ³ / ₈ W x 3 ⁵ / ₈ D	36

Two-Gang 34.0 Cu. In.



CAT. NO.	SIZE CU. IN.	MOUNTING MEANS	DESCRIPTION	DIMENSIONS (IN.)	STD. CTN. QTY.
BH234R	34.0	Mounting ears & swing clamps	Two-gang; integral clamps	3 ⁷ / ₈ L x 2 ³ / ₈ W x 3 ⁵ / ₈ D	18

Carlton SuperBlue[®] PVC Boxes





Carlton SUPERBLUE[®] SuperBlue™ Boxes

Carlton SuperBlue[®] PVC Boxes

Ceiling Boxes



BH525A-UPC



BH525P



3/0-4/0 Combination 25.0 Cu. In.

CAT. NO.	SIZE CU. IN.	MOUNTING MEANS	DESCRIPTION	DIMENSIONS (IN.)	STD. CTN. QTY.
• BH525A-UPC	25.0	Nails	Integral clamps	4 Dia. x 3.00 D	48
• BH525P	25.0	Nails	Integral clamps; ground lug and screw attached	4 Dia. x 3.00 D	24

• Listed for fixture support up to 50 lbs.



BH525L



Fan Box 25.0 Cu. In.

CAT. NO.	SIZE CU. IN.	MOUNTING MEANS	DESCRIPTION	DIMENSIONS (IN.)	STD. CTN. QTY.
• BH525L	25.0	L bracket and nails	Integral clamps	4 Dia. x 3.00 D	24
• BH525LP	25.0	L bracket and nails	Integral clamps; ground lug and screw attached	4 Dia. x 3.00 D	24

• Listed for fan support up to 35 lbs. and fixture support up to 50 lbs.



BH525H



Ceiling Box with Hanger Bar 25.0 Cu. In.

CAT. NO.	SIZE CU. IN.	MOUNTING MEANS	DESCRIPTION	DIMENSIONS (IN.)	STD. CTN. QTY.
• BH525H	25.0	Hanger bar 11 1/2" to 18 1/2"	Integral clamps	4 Dia. x 3.00 D	20
• BH525HP	25.0	Hanger bar 11 1/2" to 18 1/2"	Integral clamps; ground lug and screw attached	4 Dia. x 3.00 D	20

• Listed for fixture support up to 50 lbs.



BH614R



BH614RP



3 1/2" 14.5 Cu. In.

CAT. NO.	SIZE CU. IN.	MOUNTING MEANS	DESCRIPTION	DIMENSIONS (IN.)	STD. CTN. QTY.
•† BH614R	14.5	Base, ears & snap-in bracket	Round old/new work box	3 1/2 Dia. x 2 3/8 D	24
•† BH614RP	14.5	Base, ears & snap-in bracket	Round old/new work box w/ground lug	3 1/2 Dia. x 2 3/8 D	24

• Listed for wall fixture support up to 10 lbs.

† Tighten screws to 10 in.-lbs.



Carlton[®] PC New Work Boxes



Carlton[®] Black Polycarbonate Boxes

Carlton[®] non-metallic boxes feature a rugged polycarbonate construction to withstand extreme temperatures. The boxes will not distort or soften in heat, and they won't become brittle in the cold.

- All Polycarbonate boxes are listed to UL514C
- All Polycarbonate boxes are listed for masonry walls

- Except as indicated, all Polycarbonate boxes are UL Classified for 2 hr. fire wall and/or fire ceiling
- All Polycarbonate boxes meet NEMA OS-2
- All Polycarbonate boxes are permissible for use with 90 degree C conductors
- UL File E11461 and R9140

Grip-On GO Box[®] Single Gang Outlet Box

- Instead of nails or other fasteners, unique clamps are used to hold the box securely in place. Simply push onto the stud and go
- The GO Box outlet box is removable for easy repositioning
- "Fast-Set" mounting holes enable quick installation of devices
- Perfectly aligned every time
- Perfect for drywall depth
- A locator hole in the mounting bracket helps position the box on marked studs for accurate installation

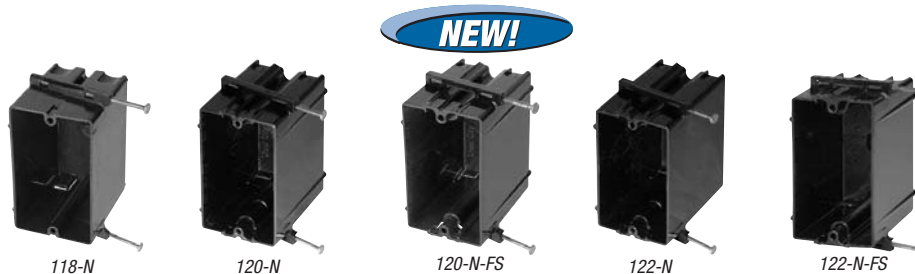
- The GO Box design is UL Listed
- 23.0 cu. in. capacity accommodates large devices and offers easy installation of wiring

It's a whole new ball game for high-volume residential products. That's because the Carlton[®] GO Box[®] product line is one of the most revolutionary labor-saving products ever designed. The GO stands for "Grip-On," and that's exactly how it works. Just push the box onto a stud and the specially designed clamps hold it in place. No tools or fasteners are required, reducing installation time, which means you can move on to the next job. When it comes to lower installed costs, this changes everything!



One-Gang 23.0 Cu.In.

CAT. NO.	SIZE CU. IN.	MOUNTING MEANS	DESCRIPTION	DIMENSIONS (IN.)	STD. CTN. QTY.
GO-23	23.0	Grip-On bracket	—	3¾ L x 2¾ W x 2½ D	30
GO-23-FS	23.0	Grip-On bracket	Fast-Set	3¾ L x 2¼ W x 2½ D	30



One-Gang Nail-On 18.0 - 22.5 Cu. In.

CAT. NO.	SIZE CU. IN.	MOUNTING MEANS	DESCRIPTION	DIMENSIONS (IN.)	STD. CTN. QTY.
118-N	18.0	Angled side nails	—	3¾ L x 2¼ W x 2⅞ D	100
120-N	20.3	Angled side nails	—	3¾ L x 2¼ W x 3¾ D	100
120-N-FS	20.3	Angled side nails	Fast Set	3¾ L x 2¼ W x 3¾ D	100
122-N	22.5	Angled side nails	—	3¾ L x 2¼ W x 3¾ D	100
122-N-FS	22.5	Angled side nails	Fast Set	3¾ L x 2¼ W x 3¾ D	100

Carlton[®] Black Polycarbonate Boxes

United States
Tel: 901.252.8000
Fax: 901.252.1354

Technical Services
Tel: 888.862.3289

Thomas & Betts

www.tnb.com

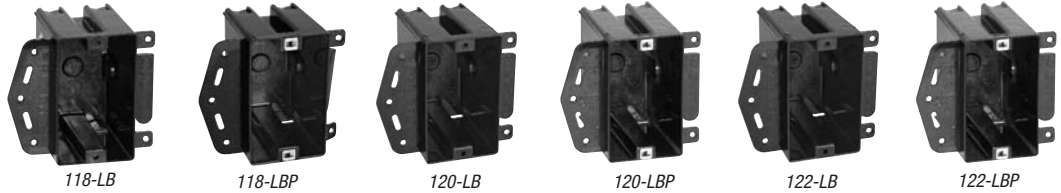




Carlon[®] PC New Work Boxes

Carlon[®] Black Polycarbonate Boxes

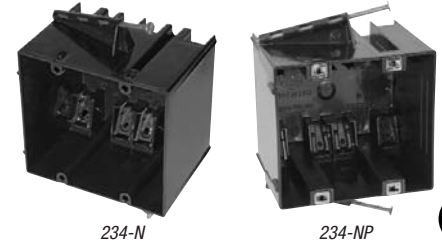
New Work Boxes



One-Gang Brackets 18.0 - 22.5 Cu. In.



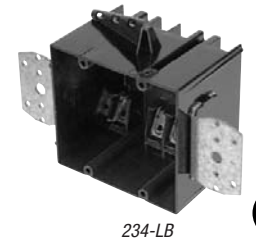
CAT. NO.	SIZE CU. IN.	MOUNTING MEANS	DESCRIPTION	DIMENSIONS (IN.)	STD. CTN. QTY.
118-LB	18.0	Molded side bracket for wood/steel studs	—	3 ³ / ₄ L x 2 ¹ / ₄ W x 2 ⁷ / ₈ D	100
118-LBP	18.0	Molded side bracket for wood/steel studs	POSI-SET [®] Fast Set	3 ³ / ₄ L x 2 ¹ / ₄ W x 2 ⁷ / ₈ D	100
120-LB	20.3	Molded side bracket for wood/steel studs	—	3 ³ / ₄ L x 2 ¹ / ₄ W x 3 ⁹ / ₁₆ D	100
120-LBP	20.3	Molded side bracket for wood/steel studs	POSI-SET [®] Fast Set	3 ³ / ₄ L x 2 ¹ / ₄ W x 3 ⁹ / ₁₆ D	100
122-LB	22.5	Molded side bracket for wood/steel studs	—	3 ³ / ₄ L x 2 ¹ / ₄ W x 3 ⁵ / ₈ D	100
122-LBP	22.5	Molded side bracket for wood/steel studs	POSI-SET [®] Fast Set	3 ³ / ₄ L x 2 ¹ / ₄ W x 3 ⁵ / ₈ D	100



Two Gang Nail-On 34.0 Cu. In.



CAT. NO.	SIZE CU. IN.	MOUNTING MEANS	DESCRIPTION	DIMENSIONS (IN.)	STD. CTN. QTY.
234-N	34.0	Angled side nails	POSI-WEDGE [®] cable clamps	3 ³ / ₄ L x 4 W x 3 ³ / ₃₂ D	50
234-NP	34.0	Angled side nails	POSI-WEDGE [®] POSI-SET [®]	3 ³ / ₄ L x 4 W x 3 ³ / ₃₂ D	50



Two Gang Bracket 34.0 Cu. In.



CAT. NO.	SIZE CU. IN.	MOUNTING MEANS	DESCRIPTION	DIMENSIONS (IN.)	STD. CTN. QTY.
234-LB	34.0	Steel side bracket for wood/steel studs	POSI-WEDGE [®] cable clamps	3 ³ / ₄ L x 4 W x 3 ³ / ₃₂ D	50

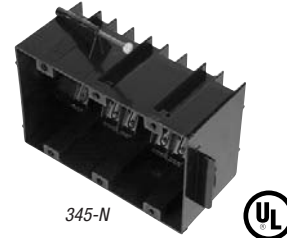


Carlson[®] PC New Work Boxes



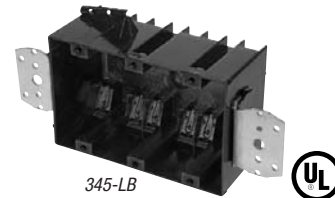
New Work Boxes

Three-Gang Nail-On 45.0 Cu.In



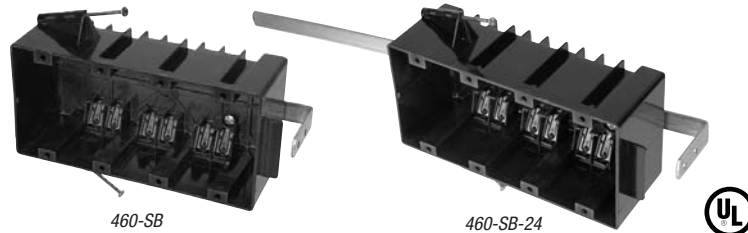
CAT. NO.	SIZE CU. IN.	MOUNTING MEANS	DESCRIPTION	DIMENSIONS (IN.)	STD. CTN. QTY.
345-N	45.0	Angled side nails	POSI-WEDGE [®] cable clamps	3 ³ / ₄ L x 5 ¹³ / ₁₆ W x 2 ³ / ₄ D	20

Three Gang Bracket 45 Cu. In.



CAT. NO.	SIZE CU. IN.	MOUNTING MEANS	DESCRIPTION	DIMENSIONS (IN.)	STD. CTN. QTY.
345-LB	45.0	Steel side bracket for wood/steel studs	POSI-WEDGE [®] cable clamps	3 ³ / ₄ L x 5 ¹³ / ₁₆ W x 2 ³ / ₄ D	25

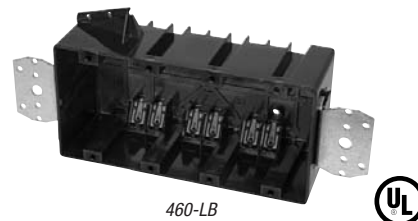
Four Gang Nail-On 60 Cu. In.



CAT. NO.	SIZE CU. IN.	MOUNTING MEANS	DESCRIPTION	DIMENSIONS (IN.)	STD. CTN. QTY.
* 460-SB	60.0	Angled side nails & back bracket	POSI-WEDGE [®] cable clamps	3 ³ / ₄ L x 7 ⁹ / ₁₆ W x 2 ³ / ₄ D	10
* • 460-SB-24	60.0	Angled side nails & back bracket	POSI-WEDGE [®] cable clamps	3 ³ / ₄ L x 7 ⁹ / ₁₆ W x 2 ³ / ₄ D	10

- 24" adjustable bracket
- * Not UL Classified for fire wall and/or fire ceiling.

Four Gang Bracket 60 Cu. In.



CAT. NO.	SIZE CU. IN.	MOUNTING MEANS	DESCRIPTION	DIMENSIONS (IN.)	STD. CTN. QTY.
* 460-LB	60.0	Steel side brackets for wood/steel studs	POSI-WEDGE [®] cable clamps	3 ³ / ₄ L x 7 ⁹ / ₁₆ W x 2 ³ / ₄ D	8

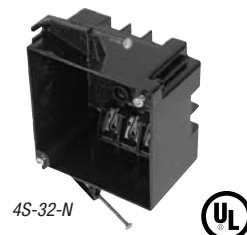
- * Not UL Classified for fire wall and/or fire ceiling.

Carlson[®] Black Polycarbonate Boxes



Carlton® PC New Work Boxes

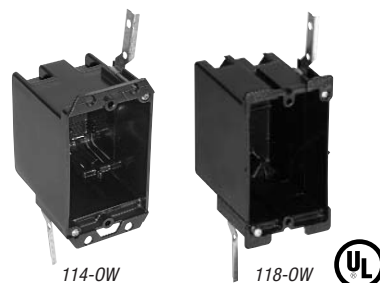
New Work Box



4" Square Boxes 32.0 Cu. In.

CAT. NO.	SIZE CU. IN.	MOUNTING MEANS	DESCRIPTION	DIMENSIONS (IN.)	STD. CTN. QTY.
4S-32-N	32.0	Angled side nails	POSI-WEDGE® cable clamps	4 L x 4 W x 2 ⁹ / ₁₆ D	50

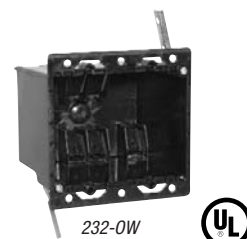
Old Work Boxes



One-Gang 14.0 – 18.0 Cu. In.

CAT. NO.	SIZE CU. IN.	MOUNTING MEANS	DESCRIPTION	DIMENSIONS (IN.)	STD. CTN. QTY.
114-OW	14.0	Swing-ear brackets	—	3 ¹ / ₂ L x 2 ⁹ / ₃₂ W x 2 ⁷ / ₈ D	50
118-OW	18.0	Swing-ear brackets	—	3 ¹³ / ₁₆ L x 2 ¹ / ₄ W x 3 ¹ / ₃₂ D	100

Two-Gang 32.0 Cu. In.



CAT. NO.	SIZE CU. IN.	MOUNTING MEANS	DESCRIPTION	DIMENSIONS (IN.)	STD. CTN. QTY.
232-OW	32.0	Swing-ear brackets	POSI-WEDGE® cable clamps	3 ⁵ / ₈ L x 4 ¹ / ₁₆ W x 3 ³ / ₁₆ D	50





Carlon[®] PC New Work Boxes



Energy-Efficient Vapor Barrier Boxes

Vapor-barrier boxes are designed to meet the energy-efficiency requirements of modern homes. They feature a drywall flange covered with a foam gasket and additional gaskets over the cable entry points. These gaskets provide a vapor-tight seal, preventing the free flow of air through the box. This helps control heating costs in the winter and cooling costs in the summer.

- High strength polycarbonate construction — will not shatter when cold or distort in heat
- V-clamps provide self-clamping cable entry (multi-gang and fan/fixture box)
- 1/2" offset flange to ensure a flush fit in 1/2" drywall
- Angled side nails for rapid installation
- Pre-drilled flanges for additional mounting options



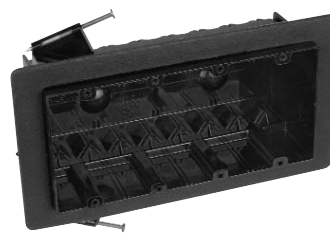
FN-23



FN-236-V



FN-354-V



FN-460-V

One-, Two-, Three- and Four-Gang



CAT. NO.	SIZE CU. IN.	MOUNTING MEANS	DESCRIPTION	DIMENSIONS (IN.)	STD. CTN. QTY.
FN-23	22.5	Angled side nails	Vapor barrier	3 ⁵ / ₈ L x 2 ¹ / ₄ W x 3 ⁵ / ₈ D	50
FN-236-V	36.0	Angled side nails	Vapor barrier	3 ¹ / ₂ x 4 x 3 ¹ / ₄ D	50
FN-354-V	54.0	Angled side nails	Vapor barrier	3 ¹ / ₂ x 5 ³ / ₄ x 3 ¹ / ₄ D	20
* FN-460-V	60.0	Angled side nails	Vapor barrier	3 ¹ / ₂ x 7 ¹ / ₂ x 2 ³ / ₄ D	10

* Not UL Classified for fire wall and/or fire ceiling.

Ceiling Fixture Box 26.0 Cu.In.



FN-426-C-V



CAT. NO.	SIZE CU. IN.	MOUNTING MEANS	DESCRIPTION	DIMENSIONS (IN.)	STD. CTN. QTY.
FN-426-C-V	26.0	Angled side nails	Vapor barrier	4 L x 4 W x 2 ³ / ₄ D	50

Ceiling Fan/Fixture 26.0 Cu.In.



FN-CFB



CAT. NO.	SIZE CU. IN.	MOUNTING MEANS	DESCRIPTION	DIMENSIONS (IN.)	STD. CTN. QTY.
FN-CFB	26.0	Angled side nails and #3 bracket	Vapor barrier	4 L x 4 W x 2 ³ / ₄ D	50

Voltage Partition



FNP



CAT. NO.	DESCRIPTION	STD. CTN. QTY.
FNP	Voltage partition for NG & FN series multi-gang boxes	50

Carlon[®] Black Polycarbonate Boxes

United States
Tel: 901.252.8000
Fax: 901.252.1354

Technical Services
Tel: 888.862.3289

Thomas & Betts

www.tnb.com





Carlton® PC New Work Boxes

Energy-Efficient Vapor Barrier Box



CFB-16-F



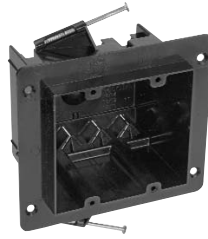
Saddle Type Fan/Fixture 16.0 Cu. In.

CAT. NO.	SIZE CU. IN.	MOUNTING MEANS	DESCRIPTION	DIMENSIONS (IN.)	STD. CTN. QTY.
CFB-16-F	16.0	Supplied lag screws	Ceiling fan/fixture	4 L x 4 W x 3 ⁵ / ₁₆ D	50

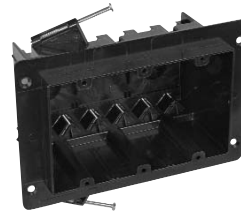
Universal Flanged Nail-On Boxes



NG-CFB



NG-236-V



NG-354-V



NG-460-V

Two-, Three- and Four-Gang



CAT. NO.	SIZE CU. IN.	MOUNTING MEANS	DESCRIPTION	DIMENSIONS (IN.)	STD. CTN. QTY.
• NG-CFB	26.0	Angle nails and #3 bracket	Ceiling fan/fixture	4 Dia x 2 ³ / ₄ D	50
• NG-236-V	36.0	Angled side nails	2-gang wall	3 ¹ / ₂ L x 4 W x 3 ¹ / ₄ D	50
• NG-354-V	54.0	Angled side nails	3-gang wall	3 ¹ / ₂ L x 5 ³ / ₄ W x 3 ¹ / ₄ D	20
* • NG-460-V	60.0	Angled side nails	4-gang wall	3 ¹ / ₂ L x 7 ¹ / ₂ W x 2 ³ / ₄ D	10

• NG Boxes have 1/2" offset wallboard flange and V-type cable entry.

* Not UL Classified for fire wall and/or fire ceiling.



FNP



Voltage Partition

CAT. NO.	DESCRIPTION	STD. CTN. QTY.
FNP	Voltage partition for NG & FN series multi-gang boxes	50

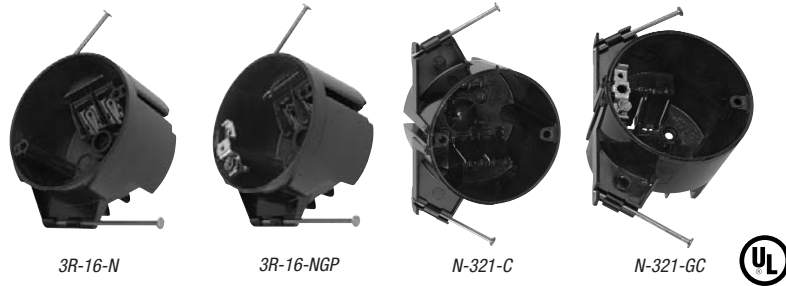




Ceiling Boxes

All ceiling boxes are produced from a high heat-resistant material developed specifically for fixture support applications.

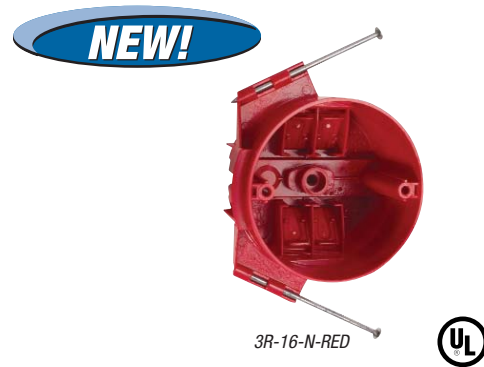
- Meets NEMA OS-2
- UL Listed to UL 514C



3 1/2" Nail-On 16.0 - 20.5 Cu. In.

CAT. NO.	SIZE CU. IN.	MOUNTING MEANS	DESCRIPTION	DIMENSIONS (IN.)	STD. CTN. QTY.
• 3R-16-N	16.0	Angled nails	POSI-WEDGE [®] cable clamps ground strap installed	3 1/2 Dia. x 2 1/4 D	50
• 3R-16-NGP	16.0	Angled nails	POSI-WEDGE [®] cable clamps	3 1/2 Dia. x 2 1/4 D	50
• N-321-C	20.5	Angled side nails	Molded fast clamps	3 1/2 Dia. x 3 1/8 D	50
• N-321-GC	20.5	Angled side nails	Molded fast clamps ground strap installed	3 1/2 Dia. x 3 1/8 D	50

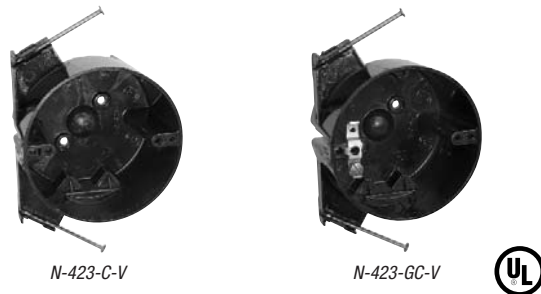
• Listed for fixture support up to 50 lbs.



3 1/2" Fire Alarm Nail-On 16.0 Cu. In.

CAT. NO.	SIZE CU. IN.	MOUNTING MEANS	DESCRIPTION	DIMENSIONS (IN.)	STD. CTN. QTY.
• 3R-16-N-RED	16.0	Angled nails	POSI-WEDGE [®] cable clamps	3 1/2 Dia. x 2 1/4 D	50

• Red ceiling box for fire alarm applications.



4" 22.5 Cu. In.

CAT. NO.	SIZE CU. IN.	MOUNTING MEANS	DESCRIPTION	DIMENSIONS (IN.)	STD. CTN. QTY.
• N-423-C-V	22.5	Angled side nails	Molded V-clamps ground strap installed	4 Dia. x 2 1/2 D	50
• N-423-GC-V	22.5	Angled side nails	Molded fast clamps	4 Dia. x 2 1/2 D	50

• Listed for fixture support up to 50 lbs.

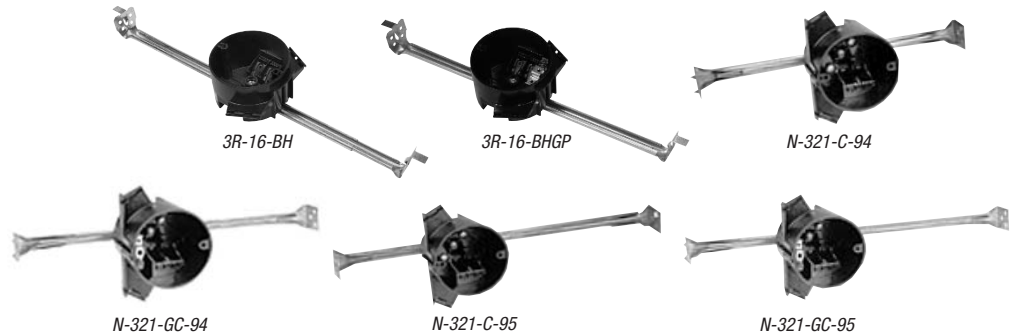


Carlton® PC

Ceiling Boxes – New Work

Ceiling Boxes with Bar Hanger

- Meets NEMA OS-2



3 1/2" 20.5 Cu.In



CAT. NO.	SIZE CU. IN.	MOUNTING MEANS	DESCRIPTION	DIMENSIONS (IN.)	STD. CTN. QTY.
• 3R-16-BH	16.0	Combo Bar 14 ⁵ / ₁₆ " min - 25" max	POSI-WEDGE® cable clamps	3 1/2 Dia. x 2 1/4 D	25
• 3R-16-BHGP	16.0	Combo Bar 14 ⁵ / ₁₆ " min - 25" max	POSI-WEDGE® cable clamps ground strap installed	3 1/2 Dia. x 2 1/4 D	25
• N-321-C-94	20.5	16" bar hanger 12 1/4" min.-19" max.	Molded fast clamps	3 1/2 Dia. x 3 1/8 D	50
• N-321-GC-94	20.5	16" bar hanger 12 1/4" min.-19" max.	Molded fast clamps ground strap installed	3 1/2 Dia. x 3 1/8 D	50
• N-321-C-95	20.5	Combo Bar 14 ⁵ / ₁₆ " min - 25" max	Molded fast clamps	3 1/2 Dia. x 3 1/8 D	50
• N-321-GC-95	20.5	Combo Bar 14 ⁵ / ₁₆ " min - 25" max	Molded fast clamps ground strap installed	3 1/2 Dia. x 3 1/8 D	50

- Listed for fixture support up to 50 lbs.



4" 22.5 Cu.In.



CAT. NO.	SIZE CU. IN.	MOUNTING MEANS	DESCRIPTION	DIMENSIONS (IN.)	STD. CTN. QTY.
• N-423-C-94-V	22.5	16" bar hanger 12 1/4" min.-19" max.	Molded fast clamps	4 Dia. x 2 1/2 D	50
• N-423-GC-94-V	22.5	16" bar hanger 12 1/4" min.-19" max.	Molded fast clamps ground strap installed	4 Dia. x 2 1/2 D	50
• N-423-C-95-V	22.5	Combo Bar 14 ⁵ / ₁₆ " min - 25" max	Molded fast clamps	4 Dia. x 2 1/2 D	50
• N-423-GC-95-V	22.5	Combo Bar 14 ⁵ / ₁₆ " min - 25" max	Molded fast clamps ground strap installed	4 Dia. x 2 1/2 D	50

- Listed for fixture support up to 50 lbs.





Saddle Type Ceiling Fan/Fixture Boxes



CFB-12



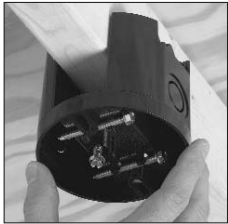
CFB-16



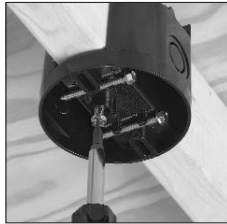
Saddle Type Fan/Fixture 12.0 – 16.0 Cu.In.

CAT. NO.	SIZE CU. IN.	MOUNTING MEANS	DESCRIPTION	DEPTH	STD. CTN. QTY.
• CFB-12	12.0	Lag screws (supplied)	Non-metallic saddle type ceiling fan/fixture box with v-clamps for non-metallic sheathed cable.	2 3/8	50
• CFB-16	16.0	Lag screws (supplied)	Non-metallic saddle type ceiling fan/fixture box with v-clamps for non-metallic sheathed cable and two 1/2" KOs.	3 5/16	50

• Listed for fan and fixture support up to 70 lbs.



Easy press-fit onto the joist. Integrally molded ribs grip the joist and stop the box from falling.



Just one hand is required to mount the box using the pre-located mounting screw.



Integrally molded cable V-clamps provide easy and secure clamping for non-metallic cables.



CFB-16 features 1/2" KOs in addition to V-clamps.

Pan Boxes



CFB-612



CFBSO-612



CFB-858



CFBSO-858



6.0 - 8.0 Cu.In.

CAT. NO.	SIZE CU. IN.	MOUNTING MEANS	DESCRIPTION	DIMENSIONS (IN.)	STD. CTN. QTY.
CFB-612	6.0	Lag screws (supplied)	Shallow ceiling fan box with V clamp, round 7/8" dia KO	4 Dia. x 1/2 D	50
CFBSO-612	6.0	Lag screws (supplied)	Shallow ceiling fan box with V clamp, round 7/8" dia KO, and snap on feature	4 Dia. x 5/8 D	50
CFB-858	8.0	Lag screws (supplied)	Shallow ceiling fan box with V clamp, round 7/8" dia KO	4 Dia. x 1/2 D	50
CFBSO-858	8.0	Lag screws (supplied)	Shallow ceiling fan box with V clamp, round 7/8" dia KO, and snap on feature	4 Dia. x 5/8 D	50



Carlon® PH

New Work Boxes

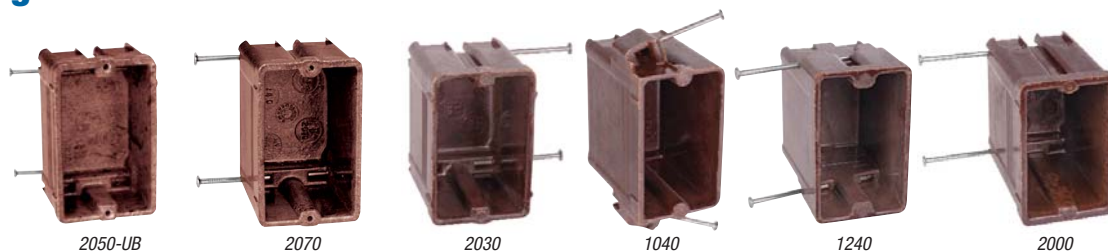
Carlon® Brown Phenolic Boxes

Carlon® Brown Phenolic Boxes

New Fire Rating! Carlon® phenolic boxes can be installed in the same stud cavity of a shared two-hour wall. They may also face opposite directions with only a 3" horizontal separation — ideal for multi-family construction!

- All Phenolic boxes are listed to UL514C
- All Phenolic boxes are listed for masonry walls
- All Phenolic boxes are UL Classified for 2 hr. fire wall and/or fire ceiling
- All Phenolic boxes meet NEMA OS-2
- All Phenolic boxes are permissible for use with 90 degree C conductors
- UL File E11461 and R9140

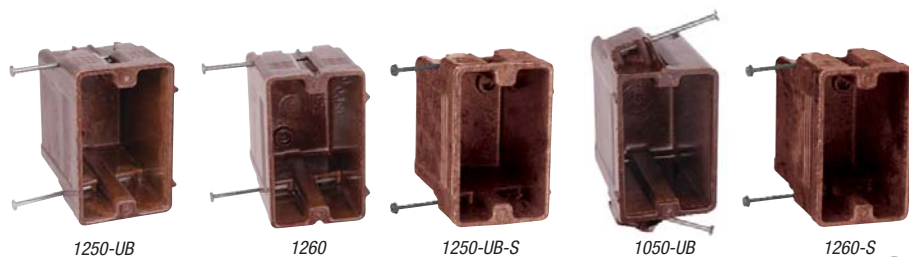
One-Gang Nail On



One-Gang Nail On 9.0 – 18.0 Cu. In.



CAT. NO.	SIZE CU. IN.	MOUNTING MEANS	DESCRIPTION	DIMENSIONS (IN.)	STD. CTN. QTY.
2050-UB	9.0	Bottom nails	—	3 ⁹ / ₁₆ L x 2 ¹ / ₄ W x 1 ¹³ / ₁₆ D	100
2070	14.0	Bottom nails	—	3 ⁹ / ₁₆ L x 2 ¹ / ₄ W x 2 ⁵ / ₈ D	100
2030	16.0	Bottom nails	—	3 ⁹ / ₁₆ L x 2 ¹⁵ / ₃₂ W x 2 ¹³ / ₁₆ D	100
1040	18.0	Compound angled nails	—	3 ⁹ / ₁₆ L x 2 ¹ / ₈ W x 3 ¹ / ₈ D	100
1240	18.0	Recessed angled nails	—	3 ¹¹ / ₁₆ L x 2 ¹ / ₄ W x 3 ⁵ / ₁₆ D	100
2000	18.0	Bottom nails	"Classic"	3 ¹¹ / ₁₆ L x 2 ¹ / ₄ W x 3 ¹ / ₈ D	100



One-Gang Nail On 20.3 – 22.5 Cu. In.



CAT. NO.	SIZE CU. IN.	MOUNTING MEANS	DESCRIPTION	DIMENSIONS (IN.)	STD. CTN. QTY.
1250-UB	20.3	Recessed angled nails	—	3 ⁷ / ₈ L x 2 ³ / ₈ W x 3 ³ / ₈ D	100
1250-UB-S	20.3	Recessed angled tech screws for wood or steel studs	—	3 ⁷ / ₈ L x 2 ³ / ₈ W x 3 ³ / ₈ D	100
1050-UB	21.0	Compound angled nails	—	3 ⁹ / ₈ L x 2 ⁵ / ₁₆ W x 3 ¹ / ₂ D	50
1260	22.5	Recessed angled nails	—	3 ⁷ / ₈ L x 2 ³ / ₈ W x 3 ²¹ / ₃₂ D	50
1260-S	22.5	Recessed angled tech screws for wood or steel studs	—	3 ⁷ / ₈ L x 2 ³ / ₈ W x 3 ²¹ / ₃₂ D	50

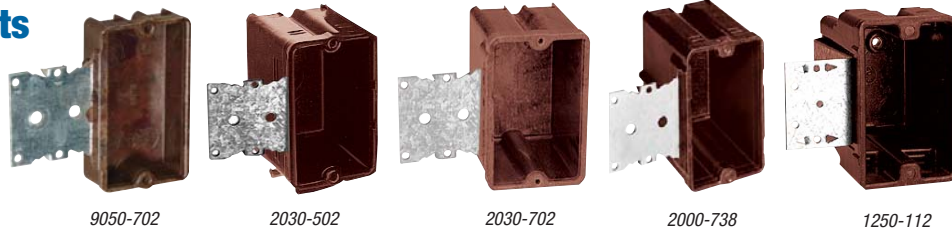


Carlton[®] PH New Work Boxes



Carlton[®] Brown Phenolic Boxes

One-Gang Brackets



9050-702

2030-502

2030-702

2000-738

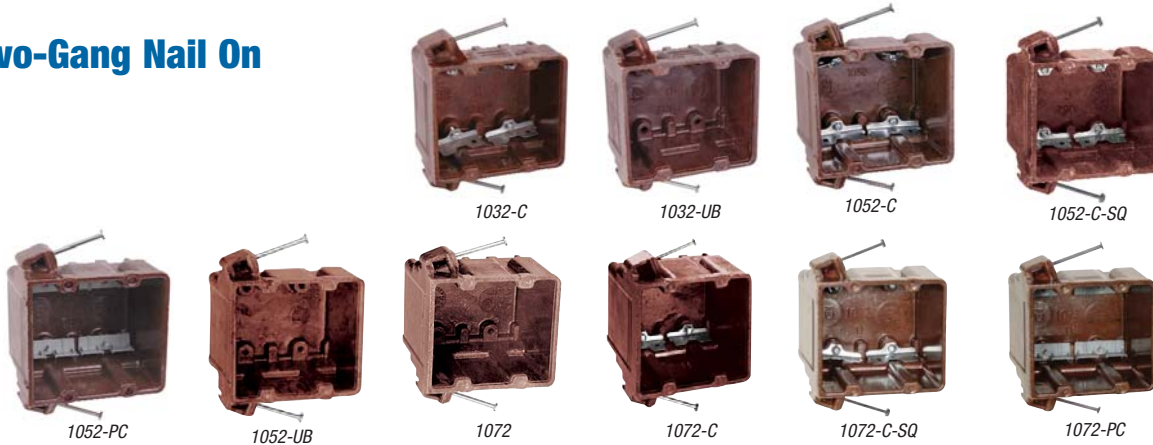
1250-112

One-Gang Brackets 5.0 – 20.3 Cu. In.



CAT. NO.	SIZE CU. IN.	MOUNTING MEANS	DESCRIPTION	DIMENSIONS (IN.)	STD. CTN. QTY.
9050-702	5.0	1/4" offset bracket for wood/steel studs	—	3 ¹ / ₁₆ L x 2 ¹ / ₈ W x 1 D	100
2030-502	16.0	1/2" offset bracket for wood/steel studs	—	3 ⁵ / ₈ L x 2 ¹ / ₄ W x 2 ³ / ₄ D	100
2030-702	16.0	1/4" offset bracket for wood/steel studs	—	3 ⁵ / ₈ L x 2 ¹ / ₄ W x 2 ³ / ₄ D	100
2000-738	18.0	3/8" offset bracket for wood/steel studs	—	3 ⁵ / ₈ L x 2 ⁵ / ₁₆ W x 3 ¹ / ₈ D	100
1250-112	20.3	1/2" offset bracket for wood/steel studs	—	3 ⁷ / ₈ L x 2 ³ / ₈ W x 3 ³ / ₈ D	50

Two-Gang Nail On



1032-C

1032-UB

1052-C

1052-C-SQ

1052-PC

1052-UB

1072

1072-C

1072-C-SQ

1072-PC

Two-Gang Nail On 27.5 – 40.5 Cu. In.



CAT. NO.	SIZE CU. IN.	MOUNTING MEANS	DESCRIPTION	DIMENSIONS (IN.)	STD. CTN. QTY.
1032-C	27.5	Compound angled nails	High clamps	3 ⁵ / ₈ L x 4 ¹ / ₁₆ W x 2 ¹¹ / ₁₆ D	50
1032-UB	27.5	Compound angled nails	#36 clamps bulk packed	3 ⁵ / ₈ L x 4 ¹ / ₁₆ W x 2 ¹¹ / ₁₆ D	50
1052-C	32.5	Compound angled nails	High clamps	3 ⁵ / ₈ L x 4 ¹ / ₁₆ W x 3 ¹ / ₈ D	50
1052-C-SQ	32.5	Compound angled nails	High clamps with #2 Sq+Ph combo head screw	3 ⁵ / ₈ L x 4 ¹ / ₁₆ W x 3 ¹ / ₈ D	50
1052-PC	32.5	Compound angled nails	Non-metallic clamps	3 ⁵ / ₈ L x 4 ¹ / ₁₆ W x 3 ¹ / ₈ D	50
1052-UB	32.5	Compound angled nails	#36 clamps bulk packed	3 ⁵ / ₈ L x 4 ¹ / ₁₆ W x 3 ¹ / ₈ D	50
1072	40.5	Compound angled nails	#36 clamps bulk packed	3 ⁵ / ₈ L x 4 ³ / ₃₂ W x 3 ⁷ / ₈ D	50
1072-C	40.5	Compound angled nails	High clamps	3 ⁵ / ₈ L x 4 ³ / ₃₂ W x 3 ⁷ / ₈ D	50
1072-C-SQ	40.5	Compound angled nails	High clamps with #2 Sq+Ph combo head screw	3 ⁵ / ₈ L x 4 ³ / ₃₂ W x 3 ⁷ / ₈ D	50
1072-PC	40.5	Compound angled nails	Non-metallic clamps	3 ⁵ / ₈ L x 4 ³ / ₃₂ W x 3 ⁷ / ₈ D	50

United States
Tel: 901.252.8000
Fax: 901.252.1354

Technical Services
Tel: 888.862.3289

Thomas & Betts

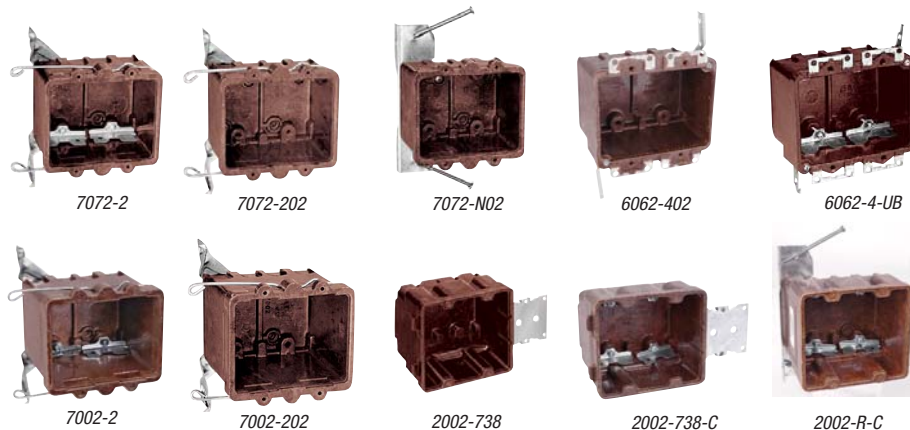
www.tnb.com



Carlton® PH New Work Boxes



Two-Gang Brackets



Two-Gang Brackets 24.0 – 34.0 Cu. In.



CAT. NO.	SIZE CU. IN.	MOUNTING MEANS	DESCRIPTION	DIMENSIONS (IN.)	STD. CTN. QTY.
7072-2	24.0	#2 bottom bracket and wire support	High clamps	3 ⁵ / ₁₆ L x 4 W x 2 ³ / ₄ D	50
7072-202	24.0	#2 bottom bracket and wire support	#36 clamps bulk packed	3 ⁵ / ₁₆ L x 4 W x 2 ³ / ₄ D	50
7072-N02	24.0	"N" bracket	#36 clamps bulk packed	3 ⁵ / ₁₆ L x 4 W x 2 ³ / ₄ D	50
6062-402	25.0	Ears, #4 swing bracket	#36 clamps bulk packed	3 ³ / ₈ L x 4 ³ / ₁₆ W x 2 ¹ / ₂ D	50
6062-4-UB	25.0	Ears, #4 swing bracket	High clamps	3 ³ / ₈ L x 4 ³ / ₁₆ W x 2 ¹ / ₂ D	50
6062-4-UB-SQ	25.0	Ears, #4 swing bracket	High clamps with #2 Sq+Ph combo head screw	3 ³ / ₈ L x 4 ³ / ₁₆ W x 2 ¹ / ₂ D	50
7002-2	32.5	#2 bottom bracket and wire support	High clamps	3 ¹ / ₄ L x 4 W x 3 ⁵ / ₈ D	50
7002-202	32.5	#2 bottom bracket and wire support	#36 clamps bulk packed	3 ¹ / ₄ L x 4 W x 3 ⁵ / ₈ D	50
2002-738	34.0	3/8" offset brackets for wood/steel studs	3/8" Offset wallboard tabs & #36 clamps bulk packet	3 ¹¹ / ₁₆ L x 4 ³ / ₁₆ W x 3 ¹ / ₄ D	50
2002-738-C	34.0	3/8" offset brackets for wood/steel studs	3/8" Offset wallboard tabs & high clamps	3 ¹¹ / ₁₆ L x 4 ³ / ₁₆ W x 3 ¹ / ₄ D	50
2002-R-C	34.0	"R" bracket	High clamps	3 ¹¹ / ₁₆ L x 4 ³ / ₃₂ W x 3 ¹ / ₄ D	50