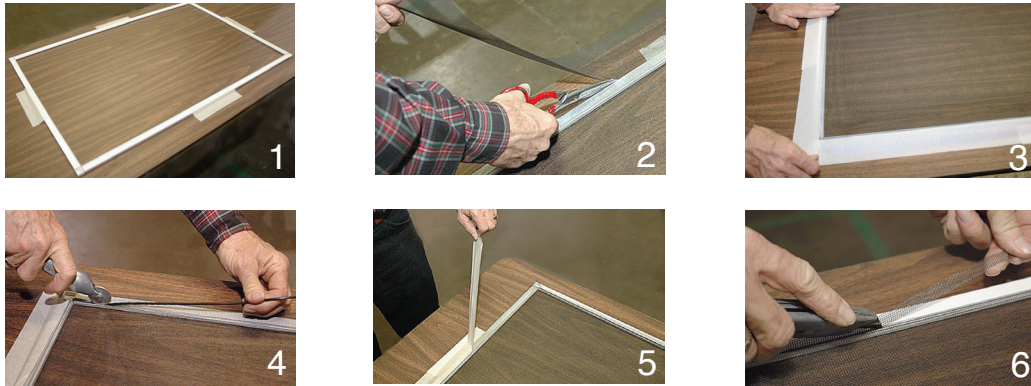


RESCREENING INSTRUCTIONS

NEEDED: spline (see front of product roll label for correct spline size), spline roller, scissors, utility knife, heavy duty tape and flat work surface

FIBERGLASS & ALUMINUM FABRICATION



1. Place screen frame on a flat surface. Install attachment hardware.*
Tape outside edges of screen frame to flat surface with masking tape. Do not cover spline groove with tape.
2. Lay screen over frame and align edges of screen with frame on two adjacent sides. Trim edges straight if needed.
3. For Fiberglass – tape screen to frame on these two adjacent sides. Do not tape over spline groove. For Aluminum – use scissors to cut corners of screen mesh at 45° angle on two corners. Tape these two edges the same as fiberglass.
4. For Fiberglass – using spline roller, roll in spline and screen on sides opposite the taped edges. For Aluminum – using smooth end of spline roller, gently roll screen into grooves opposite the taped edges. Then use grooved end of spline roller to roll spline into frame.
5. Remove tape and repeat steps 3 and 4 to roll in rest of screen.
6. Use utility knife to trim any excess spline and screen from frame.



* Attachment Hardware – Tension Springs/Pull Tabs or Loop Latches used to attach the screen to the window are located on frame before spline and screen is applied.