



Installation Instruction for new construction of a Door Jamb Switch Kit (RDS50Z) *Normally Closed*

Door open lights ON, Door closed lights are OFF.

3A, 125 Vac. 4.6 Cu Inch.

NOTICE: For installation by a qualified electrician in accordance with national and local electrical codes and the following instructions.

CAUTION: RISK OF ELECTRICAL SHOCK. Disconnect power before installing.

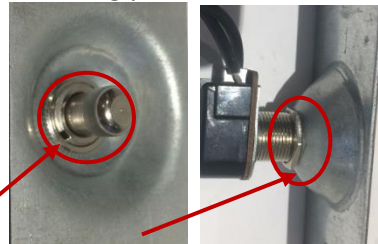
CAUTION: Make sure that you follow local Electrical rules and regulations. If unsure, consult a qualified electrician.

NOTE: Do not install on a Metal door frame

NOTE: Use Copper Conductors only.

- 1) Create suitable cable entry in Door Frame.
- 2) Make an opening in Door Jam to suit Junction Box. (See Fig. 2 for dimensions of Box). Create recess for Box Ears to ensure Switch Plate is flush to door jamb when installed.
- 3) Remove a knock out in Junction Box to accommodate cable entry.
- 4) Insert cable through knock out and secure to box with approved connector (not provided).
- 5) Fasten box to door jamb with 4 wood screws (provided).
- 6) Connect GREEN/ BARE (ground) wire to ground screw in back of junction box, connect Line and Load wires to switch pig tail wires following national and local electrical codes Use Fig. 1 for guidance.
- 7) Adjust shaft to proper depth on switch plate using locknuts (provided) at the back and front of the switch assy' for contact with round kicker plate .
- 8) Using 2 short screws (provided), fasten the switch plate to the box.

- 9) With power ON, Open and close door to verify proper operation of the switch and adjust switch depth accordingly.



- 10) Once proper positioning is established, install the round kicker plate on the door side to face the switch button, by fastening with the wood screw (provided).



- 11) Installation is complete.

Figure 1 - Cat. No. RDS50Z
 Illustration 1 - Interrupteur de porte n° RDS50Z
 Figura 1 - Cat. No. RDS50Z Interruptor de Puerta

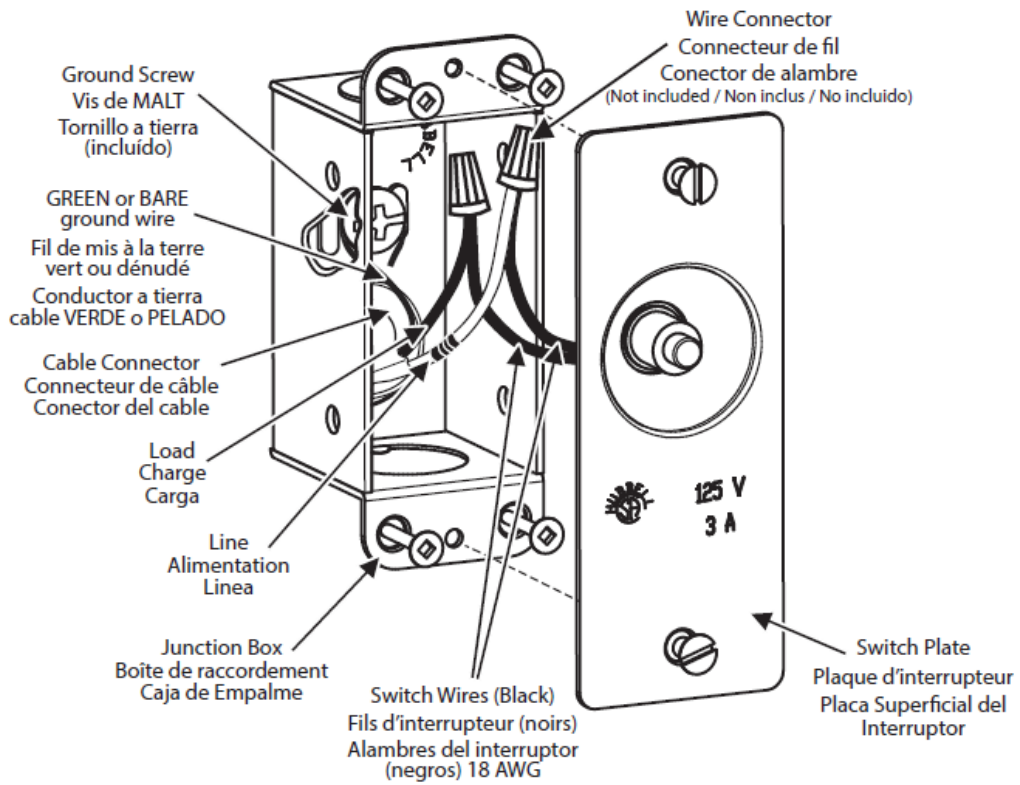


Fig. 2

Fig. 3

