

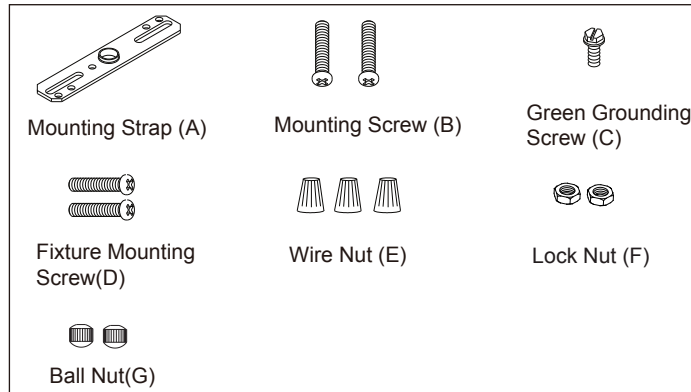
ASSEMBLY AND INSTALLATION INSTRUCTIONS

P0231

WARNING: TO AVOID RISK OF ELECTRICAL SHOCK, BE SURE TO SHUT OFF POWER BEFORE INSTALLING OR SERVICING THIS FIXTURE.

NOTES: 1. Before installing, consult local electrical codes for wiring and grounding requirements.
2. READ AND SAVE THESE INSTRUCTIONS.

Hardware Package (included):



Installation Steps

Turn off the power at fuse or circuit box.

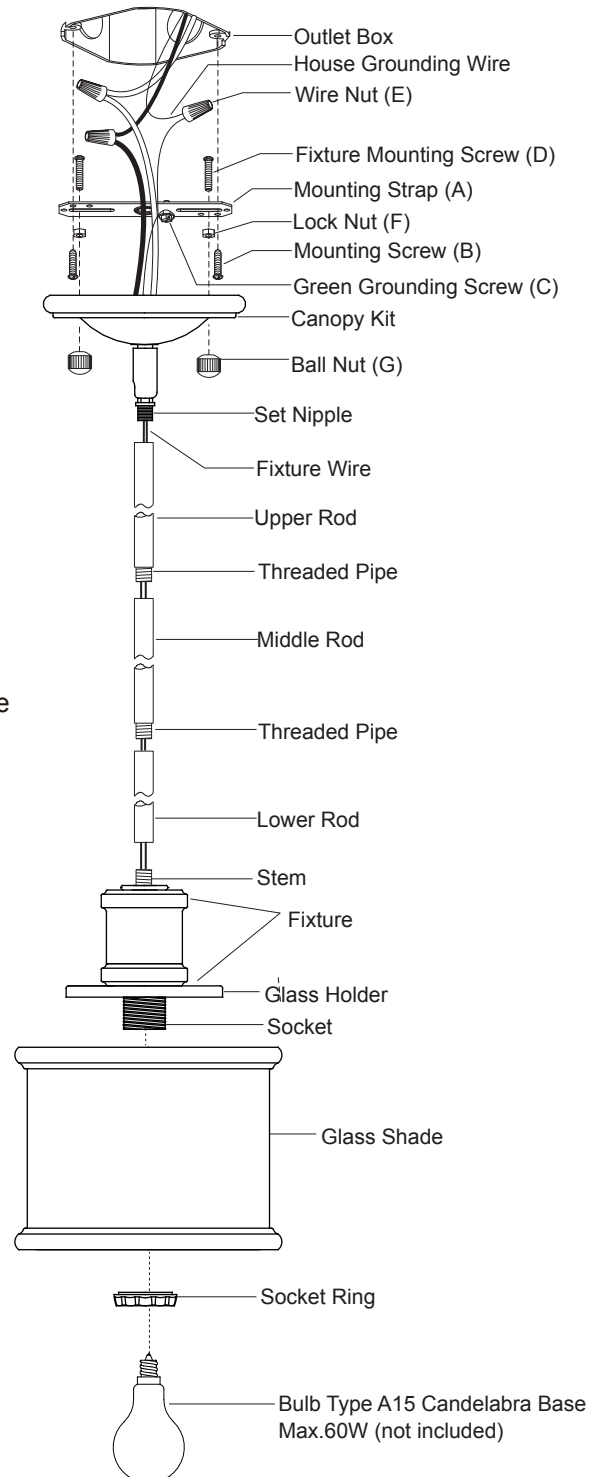
1. Rod Connections:

- Thread the fixture wire from the fixture through the lower rod, and then secure the lower rod onto fixture using the stem.
- Thread the fixture wire through the middle rod, and then secure the middle rod onto the lower rod using the threaded pipe.
- Thread the fixture wire through the upper rod, and then secure the upper rod onto the middle rod using the threaded pipe.

Note: Length adjustable from 12" to 54". Use fewer rods if shorter length is desired.

- Thread the fixture wire through the canopy kit, and then secure the rod assembly to the set nipple of the canopy kit.
- Thread two fixture mounting screws to mounting strap, and then secure with two lock nuts. Adjust the length of the fixture mounting screws if necessary.
- Attach the mounting strap to outlet box by using two mounting screws.
- Pull out the source wires from the outlet box. Make wire connections using wire nuts as follows:
 - Connect the smooth-coated wire (marked) from the fixture to the black wire from the power source.
 - Connect the ribbed-coated wire (unmarked) from the fixture to the white wire from the power source.
 - Attach the fixture grounding wire to the mounting strap with the green grounding screw, and then connect it to the house grounding wire with a wire nut.
 Carefully put the wires back into the outlet box.

- Attach the canopy kit to the mounting strap by inserting the fixture mounting screws, and then secure it with two ball nuts.

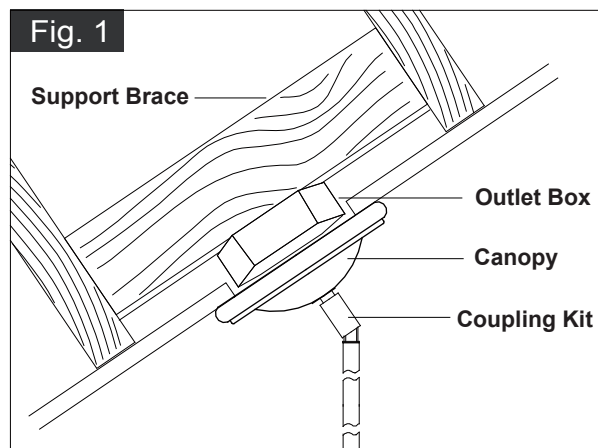


7. Attach the glass shade to fixture, and then secure it with the socket ring.

8. Install a bulb (not included). See relamping label at socket area or packaging for maximum allowed wattage.

9. Angled mounting recommended for a vaulted or angled ceiling. (See Fig. 1)

Turn on the power at fuse or circuit box.

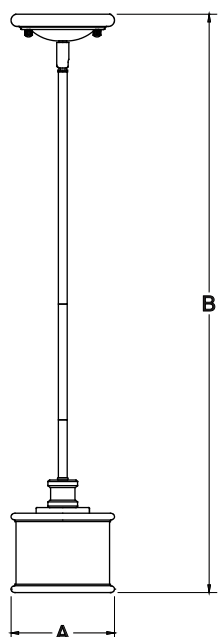


The following parts are available for re-order if damaged or missing.

Spare Parts List:

			← Assembly Kit 4148MM (1 SET)

12"Rod + Threaded Pipe 3085RD	6"Rod + Threaded Pipe 3086RD	3"Rod + Threaded Pipe 3087RD	Glass Shade 9877FO



A: 5-1/2"

B: 12"~ 54"