

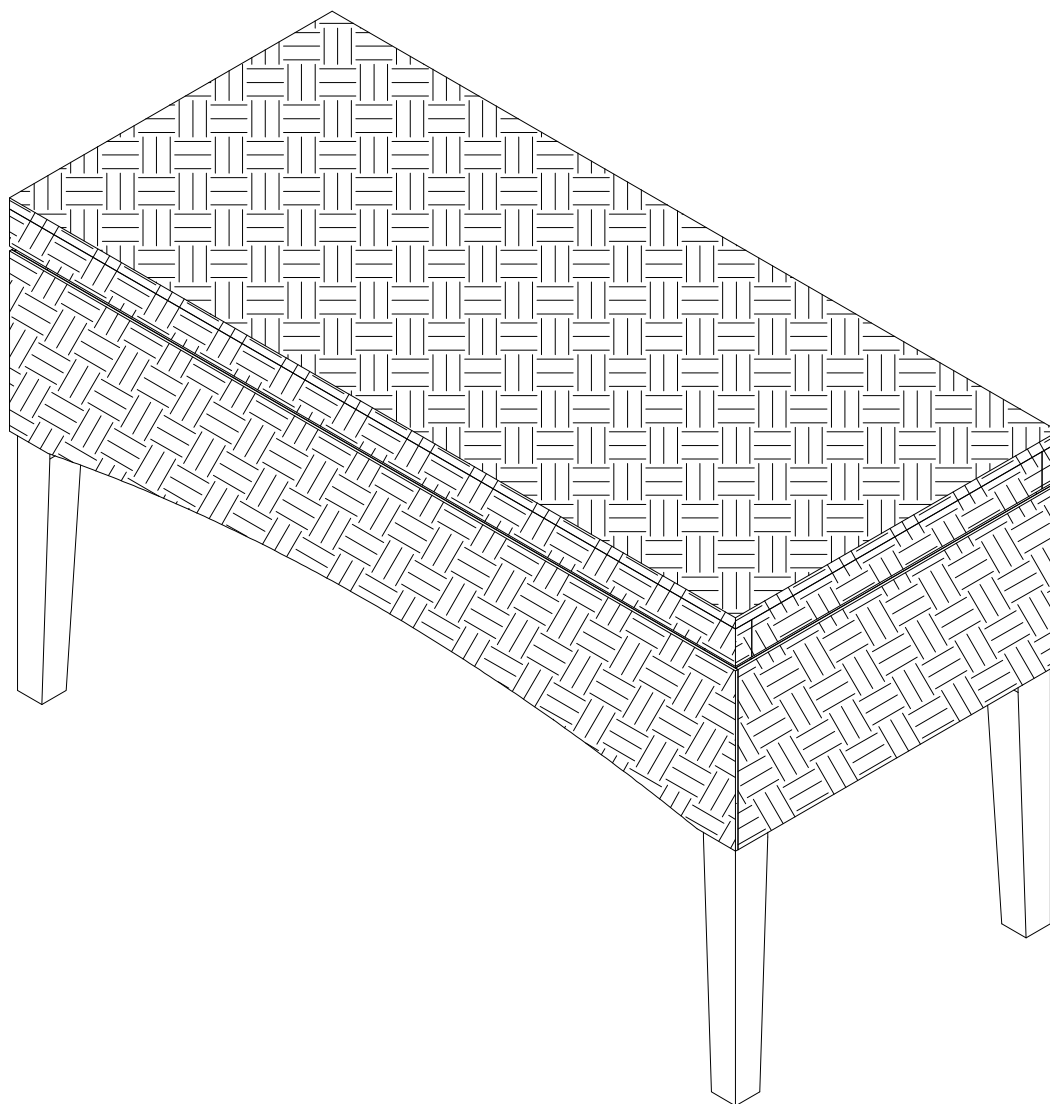
**BC273200TX**

# **Antero Hyacinth Bench Assembly Instructions**



**Southern**  
ENTERPRISES

For assistance with assembly contact:  
Southern Enterprises Inc.  
Customer Service 1-800-633-5096  
[service@seidal.com](mailto:service@seidal.com)  
[www.seifurniturestore.com](http://www.seifurniturestore.com)



# BC273200TX

## Antero Hyacinth Bench

### Parts List

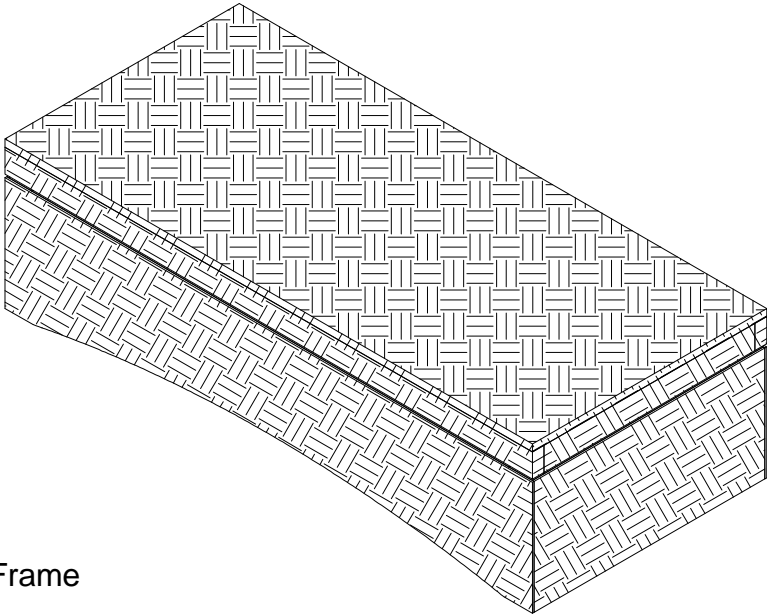
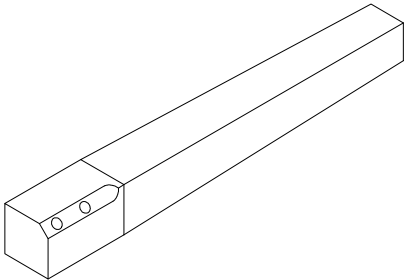
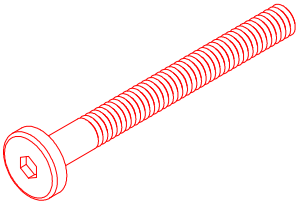
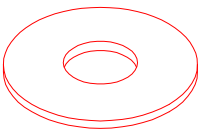

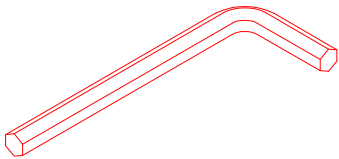
Please review all parts and hardware before disposing of any packaging.

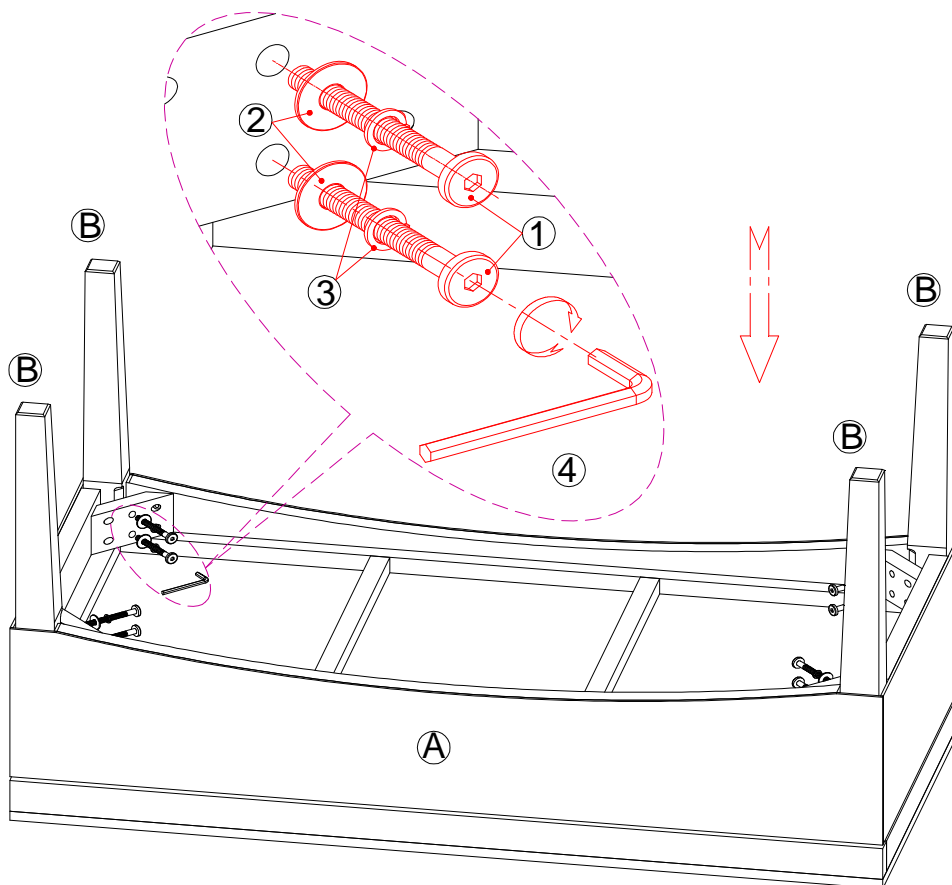
Call Customer Service if missing any hardware.

Using a screw that is too long will cause damage.

Before beginning assembly, separate each type of screw.

Carefully study the screw diagrams below. You may receive extra hardware with your unit.

<p>A</p>  <p>Seat Frame</p>		<p>B</p>  <p>Leg</p>	
<p>1</p>  <p>Bolt Ø5/16" x 2-3/8"</p>	<p>2</p>  <p>Washer Ø5/8" x 1/32"</p>	<p>3</p>  <p>Spring Washer Ø7/16"</p>	<p>4</p>  <p>Allen Wrench 5/32"x2-3/8"</p>
<p><b>Care and Cleaning Instructions:</b> Before using, wipe with a clean, dry cloth. Avoid rubbing or scratching the surface with rough or abrasive objects.</p>		<p>For replacement parts or questions, please call SEI Customer Service at 1-800-633-5096.</p>	

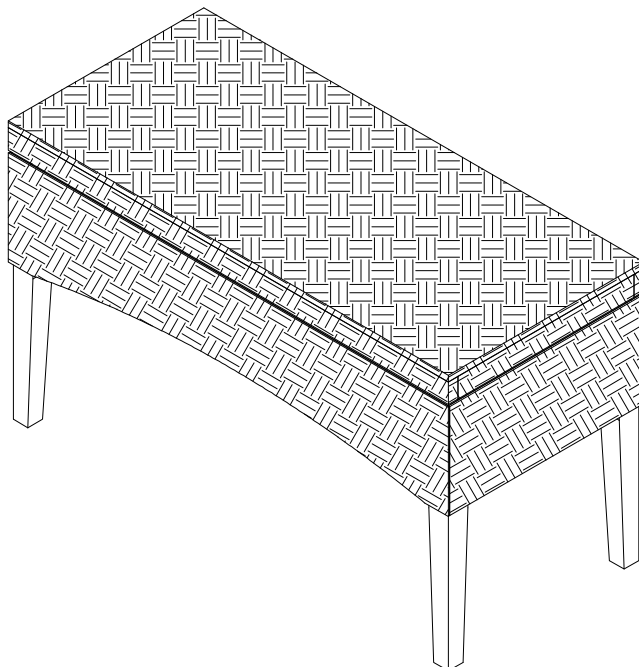


**Note: Place all parts on a soft surface to prevent scratches.**

**Step 1:**

Attach Legs **(B)** to Top **(A)** using Bolts **(1)**, Washers **(2)** and Spring Washers **(3)**.

Tighten Bolts using Allen Wrench **(4)** as shown



**Step 2:**

**Your Antero Hyacinth bench assembly is now complete!**

## Parts Replacement Form

### Customer Information

Name \_\_\_\_\_

Address \_\_\_\_\_

City/State/Zip Code \_\_\_\_\_

Phone Number \_\_\_\_\_

Please indicate where you purchased this item: Store/Website/Catalog  
\_\_\_\_\_

Please indicate color/size/style number:  
\_\_\_\_\_

Style No	Parts Letter	Parts Description	Quantity Needed
_____	_____	_____	_____
_____	_____	_____	_____

Please immediately examine this product carefully. Any request for missing parts or damage replacement must be received within 90 days of your receipt of the product. Replacement, if available, will be honored within this time frame. Parts will not be available for items arriving fully assembled. We do not recommend modifying product(s) and we are not responsible for any damages due to product modification(s). If damages or missing parts are not reported within 90 days of your receipt, we are under no obligation to provide parts or replacement merchandise.

Please contact Southern Enterprises at 800-633-5096 or in Dallas 972-869-0111/ 9am – 4pm Mon-Fri Central time if you have product issues or email us at [service@seidal.com](mailto:service@seidal.com). Please ask for customer service representative for issues involving damages or replacement parts. Please ask for technical assistance representative for any issues with product and assembly/construction.

Please contact the retailer that you purchased from for returns.



**Southern**  
ENTERPRISES

Customer Service 1-800-633-5096  
[service@seidal.com](mailto:service@seidal.com)  
Southern Enterprises, Inc.  
600 Freeport Parkway, Suite 200  
Coppell, Texas 75019