

Please go to www.quoizel.com for product cleaning tips. Go to the **Care + Maintenance** selection.

Tools Required: Flathead screwdriver, Phillips screwdriver, pliers, wire cutters, wire strippers, electrical tape, safety glasses.

Light Source: (3) A19 Medium Base 100W Maximum, Alternate bulb (3) 23W CFL

Estimated Assembly Time: 30-45 minutes

Preparation: Identify and inspect all parts before beginning installation. Check package content list and diagrams below to be sure all parts are present. If any parts are missing or damaged, do not attempt to assemble, install, or operate the fixture. Contact customer service for replacement parts.

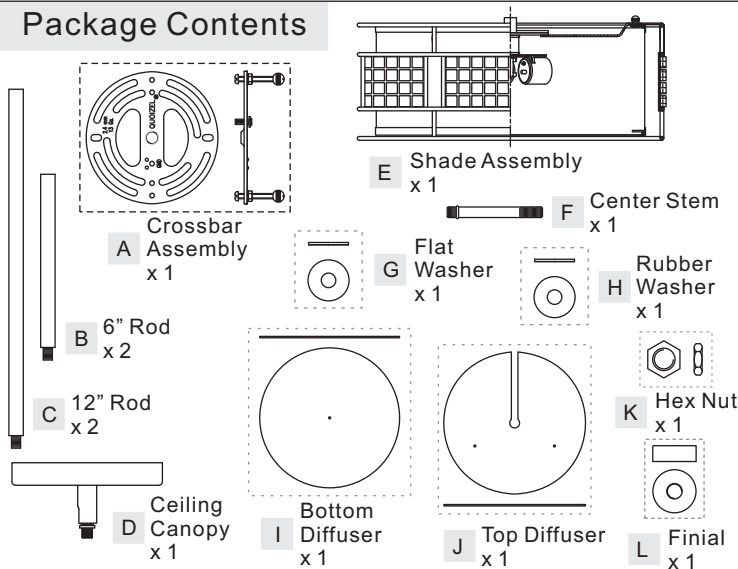
⚠ Warnings and Cautions

Turn off electricity at circuit breaker or main fuse box before installation. Consult a licensed electrician if in doubt.

These instructions are provided for your safety. It is very important you read them completely before installing the fixture. We strongly recommend that a licensed, professional electrician perform the installation.

Disconnect fixture from power source before replacing bulbs. Make sure bulbs are given sufficient time to cool before removal. Do not subject glass parts to any shock while in operation or shattering June result.

Package Contents



B. Pass the supply wires and ground wire through the chosen rods (B/C) and the Ceiling Canopy (D). Thread the Shade Assembly (F), the chosen Rods (B/C) and the Ceiling Canopy (D) together. Hand tighten until snug.

Suggested rods for Ceiling height :
8' ceiling : use (2) 12" rods
9' ceiling : use (2) 6" rods and (2) 12" rods

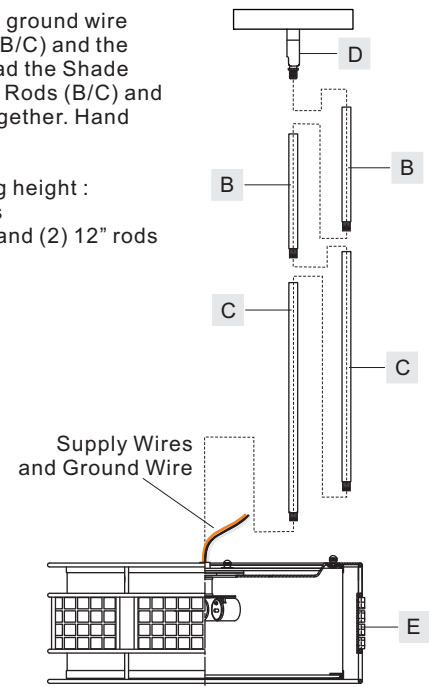


Figure 2

STEP 1 - Attach Top Diffuser to Socket Assembly

Quoizel recommends (2) people for this step.

A. With one person hold Socket Assembly, another person remove Lock Balls and Washers from Shade Assembly (E). Attach Top Diffuser (J) onto top of Shade Assembly (E) and pass holes over bolts. Secure by threading Washers and Lock Balls onto Bolts and hand tighten until snug.

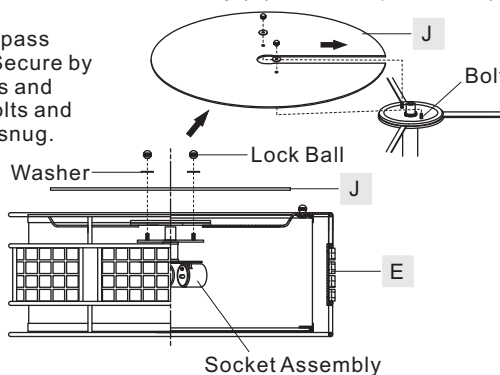


Figure 1

STEP 3 - Install Crossbar Assembly

A. Pass the supply wires through the Crossbar Assembly (A). Attach the Crossbar Assembly (A) to the Outlet Box with the head of the Green Ground Screw facing you. Secure it with Outlet Box Screws (not included). Tighten until snug.

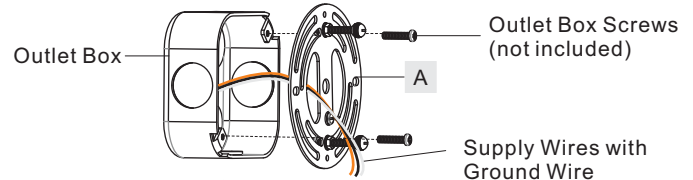


Figure 3

STEP 2 - Install Ceiling Canopy, Rods and Shade Assembly together

A. Determine Rods (B/C) to be assembled to the Shade Assembly (E) according to your hanging height.

STEP 4 - Fit Ceiling Canopy to Crossbar Assembly

A. Remove mounting balls from the Crossbar Assembly (A). Fit the Ceiling Canopy (D) to the Crossbar Assembly (A) and secure with mounting balls. Note: The Ceiling Canopy (D) should be snug

Thank you for purchasing a Quoizel product.

Need assistance with parts or assembly? Call Quoizel customer service at 1-800-645-3184 or visit us on-line at www.quoizel.com

length of the nipple on the Crossbar Assembly (A) by unscrewing the preassembled hex nut and lock washer and then screwing the mounting screws in or out of the crossbar until the correct length is achieved. Once the Ceiling Canopy (D) is secure, remove the mounting ball and Ceiling Canopy (D) and proceed to Step 5.

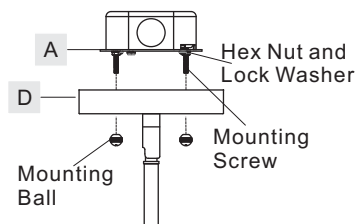


Figure 4

STEP 5 - Wire Connections

- A. Use standard wire connectors (not included) to make all wire connections. Twist connectors until wires are tightly joined together. Wrap each connection with approved electrical tape and carefully stuff all the connected wires into the Outlet Box.

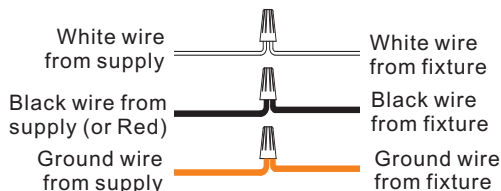


Figure 5

STEP 6 - Install Fixture Body

- A. Carefully tuck all wires into the outlet box and position the Ceiling Canopy (D) over the outlet box. Align the holes in the Ceiling Canopy (D) with the mounting screws, then attach the Ceiling Canopy (D) using the previously removed mounting balls. Hand tighten until snug.

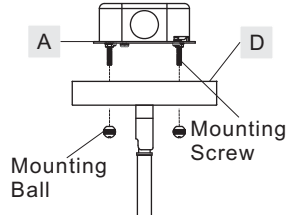


Figure 6

STEP 7 - Install Bulb and Bottom Diffuser

- A. Thread the beaded end of the center Stem (F) into the coupling underside of socket cluster. Hand tighten until snug.
 B. This fixture uses standard bulb with medium screw base. Maximum 100 watts. Insert bulb and screw snugly into place.
 C. Place the Bottom Diffuser (I) over the end of the Center Stem (F), attach to Tabs inside the bottom edge of inner shade. Place Rubber Washer (H) and Flat Washer (G) over the end of the Center Stem (F) and secure with Hex Nut (K). Tighten until snug gently.
 D. Thread Finial (L) onto the end of Center Stem (F) and hand tighten until snug.

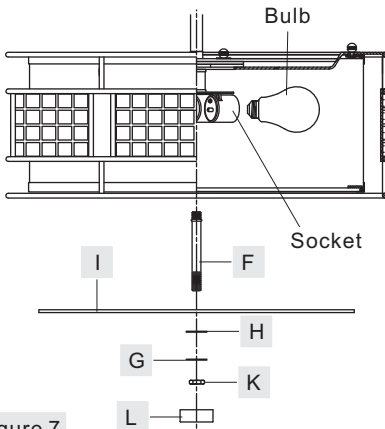


Figure 7

Your fixture is now assembled and ready to use. Enjoy!

REPLACE INNER SHADE

- A. Unlock Finial and remove it from fixture.
 B. Unscrew Hex Nut and remove Flat Washer, Rubber Washer and Diffuser.
 C. Hold Lock Screw with screwdriver, unlock Lock Ball and replace the Inner Shade with replacement Inner Shade. Thread Lock Balls back onto Lock Screws and hand tighten until snug to secure the replacement Inner Shade.
 D. Reverse above steps to reinstall rest components to fixture.

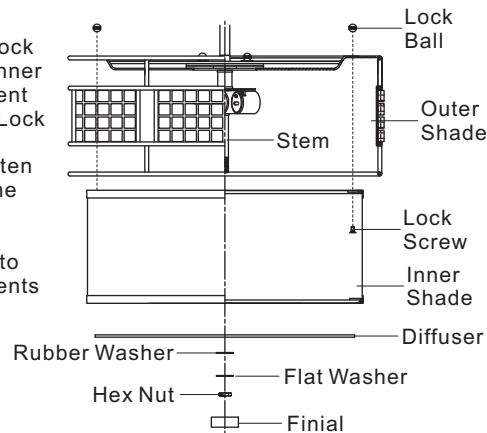
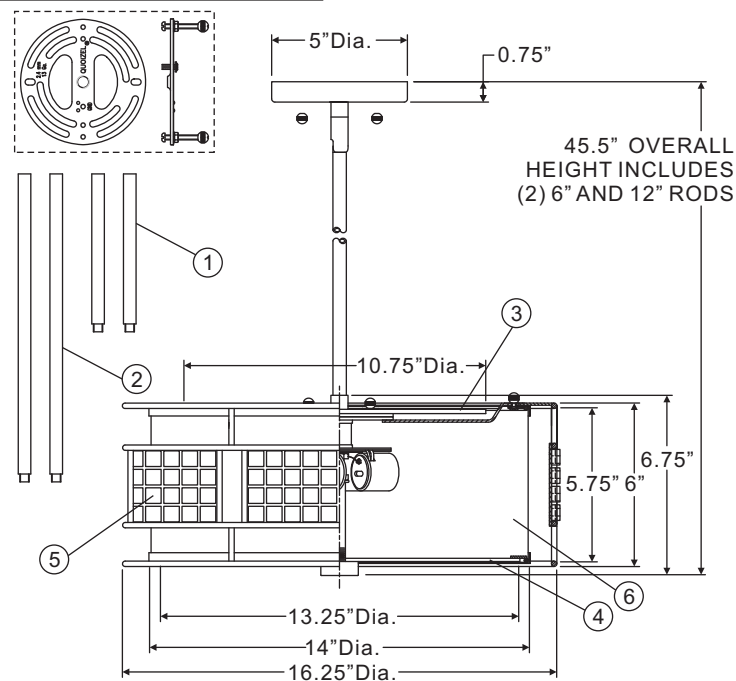


Figure 8

BNY2816C

FINISH: POLISHED CHROME

NOTE: ALL DIMENSIONS ARE ROUNDED UP TO THE NEAREST 1/4"



NO.	PART NUMBER	REPLACEMENT PART	QTY.
1	9006EXC	6" ROD	2
2	9012EXC	12" ROD	2
3	G2611DI	DIFFUSER 12"D	1
4	J1137DI	DIFFUSER 13.5"D	1
5	S12649FA	OUTER SHADE	1
6	S12768FA	INNER SHADE	1

(3) 100W Medium Base Bulbs (Not Supplied)

Thank you for purchasing a Quoizel product.
 Need assistance with parts or assembly? Call Quoizel customer service at 1-800-645-3184
 or visit us on-line at www.quoise.com