

ASSEMBLY AND INSTALLATION INSTRUCTIONS

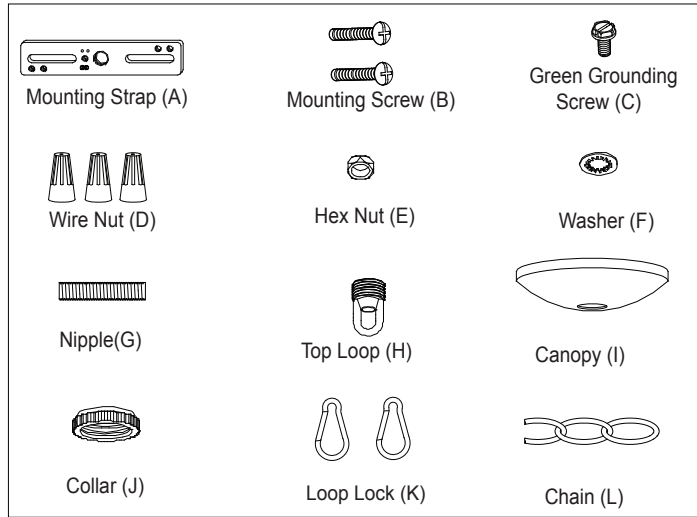
P0048

WARNING: BE SURE TO SHUT OFF POWER AT THE MAIN FUSE OR CIRCUIT BREAKER BOX BEFORE INSTALLING OR SERVICING THIS FIXTURE.

**NOTE: 1. Before installing, consult local electrical codes for wiring and grounding requirements.
2. READ AND SAVE THESE INSTRUCTIONS.**

Parts:

Parts Number (4669MM)



Parts Number (5036CY)



Crystal Drops (M) (X8)

Parts Number (5037CY)



Crystal Drops (N) (X4)

Parts Number (5038CY)

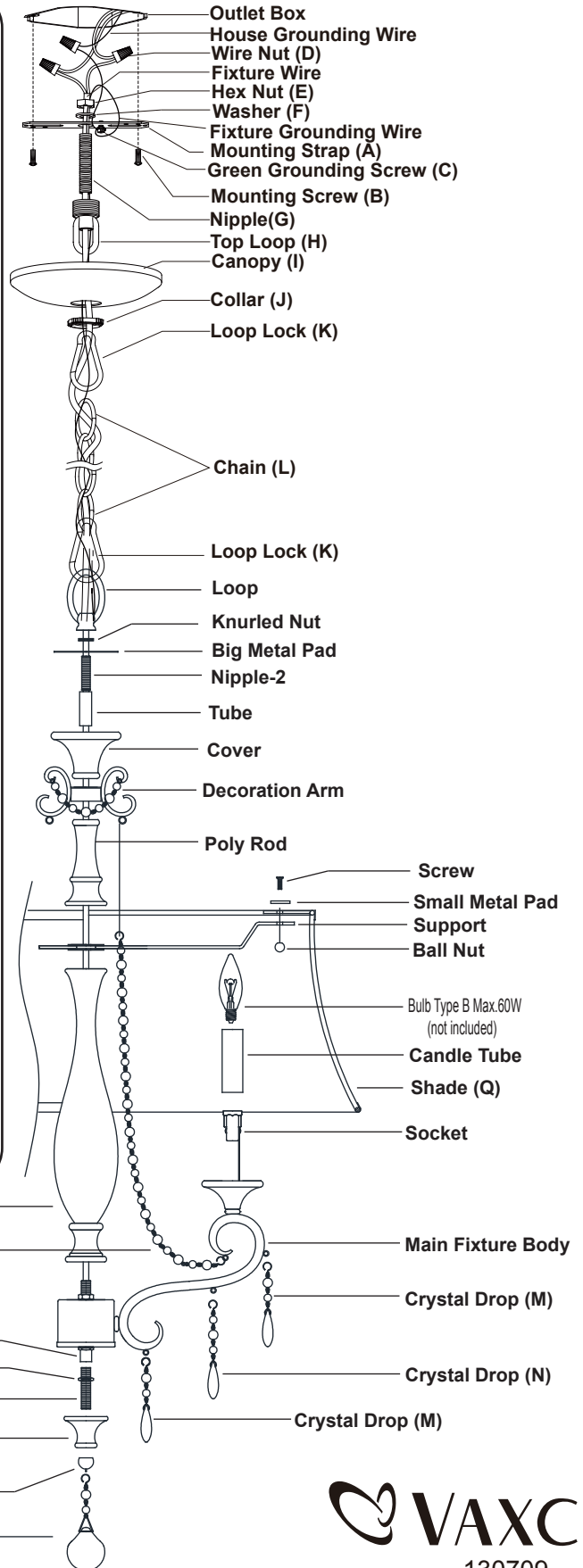


Crystal Drops (O) (X1)

Parts Number (5051CY)



Crystal String (P) (X4)



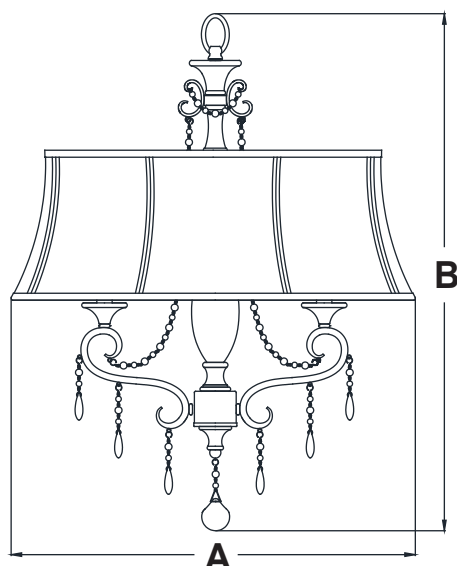
1. Attach nipple to the mounting strap, then secure it with a washer and hex nut.
2. Attach the mounting strap to the outlet box by using two mounting screws.
3. Adjust the arms of the fixture according to the drawing of the package.

Important:

a. The arms should be positioned with equal distance between them.

b. The arms should be fixed securely.

4. Screw the center body into the main fixture body; pull any excess cord through the center body.
5. Screw the nipple-2 into the center body.
6. Slide the support, poly rod, decoration arm, cover, tube, big metal pad and knurled nut through the nipple-2, then secure them with a knurled nut.
7. Secure the loop to the nipple-2.
8. Screw the nipple-1 into the coupling on the main fixture body, and secure it with a hex nut.
9. Slide the cap onto the nipple-1; then secure it with a finial.
10. Remove crystal strings from packaging. Attach crystal strings to bottom loop in arms and to the decoration arm.
11. Remove crystal drop from packaging. Attach the crystal drop to the loop of the main fixture body, as shown.
12. Remove crystal drop from packaging. and hook it onto the finial.
13. Attach the candle tube into the socket on the main fixture body.
14. Attach the shade to the main fixture, adjust the shade, thread the four screws through each holes of the small metal pads, shade and support, then secure them with ball nuts.
15. Choose the length of the chain you need, then weave the fixture wire and the fixture grounding wire through the chain. Then connect one end of the chain with the loop by using the loop lock.
16. Secure the top loop to nipple.
17. Thread the fixture wire and fixture grounding wire through the collar, canopy, top loop, nipple and mounting strap.
18. Connect the other end of the chain with the top loop by using the loop lock.
19. Pull out the outlet wires and the house grounding wire from the outlet box. Make wire connections by using the wire nuts:
 - The smooth wire (marked) from the fixture to the black wire from the power source.
 - The ridged wire (unmarked) from the fixture to the white wire from the power source.
 - Attach the fixture grounding wire to the mounting strap with the green grounding screw. Then connect it to the house grounding wire with a wire nut.
 Carefully put the wires back into the outlet box.
20. Attach the canopy to the mounting strap by inserting the top loop, then secure it with the collar.
21. Install bulbs(not included). See relamping label at socket area or packaging for maximum allowed wattage.
22. Turn on the power at the main fuse or circuit breaker box.



A: 23-1/4"

B: 27-1/2"