

# ASSEMBLY AND INSTALLATION INSTRUCTIONS

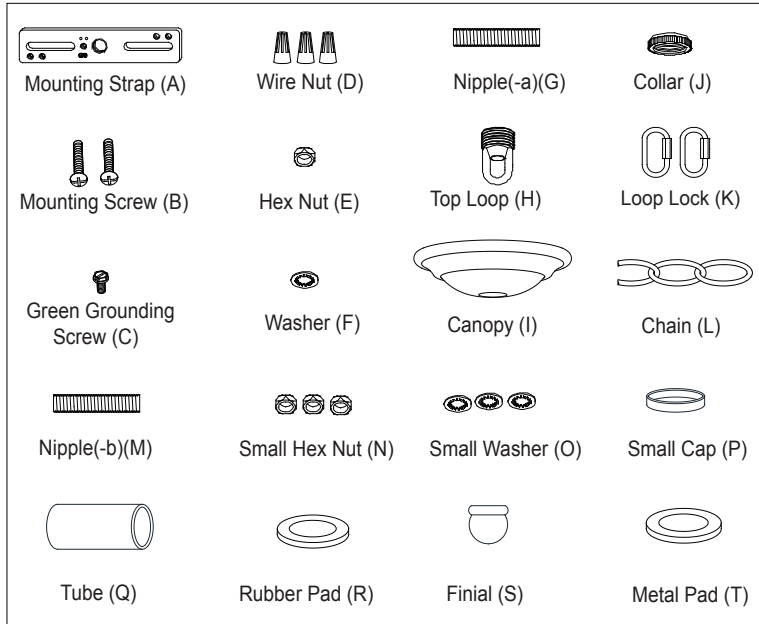
P0082 / P0085

**WARNING: BE SURE TO SHUT OFF POWER AT THE MAIN FUSE OR CIRCUIT BREAKER BOX BEFORE INSTALLING OR SERVICING THIS FIXTURE.**

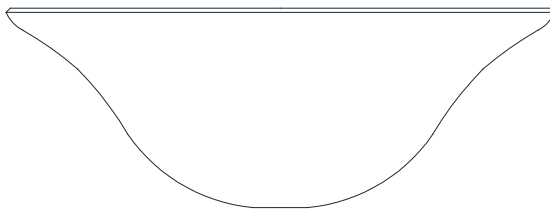
**NOTE: 1. Before installing, consult local electrical codes for wiring and grounding requirements.  
2. READ AND SAVE THESE INSTRUCTIONS.**

## Parts:

Parts Number (4957MM For P0082)  
Parts Number (4966MM For P0085)

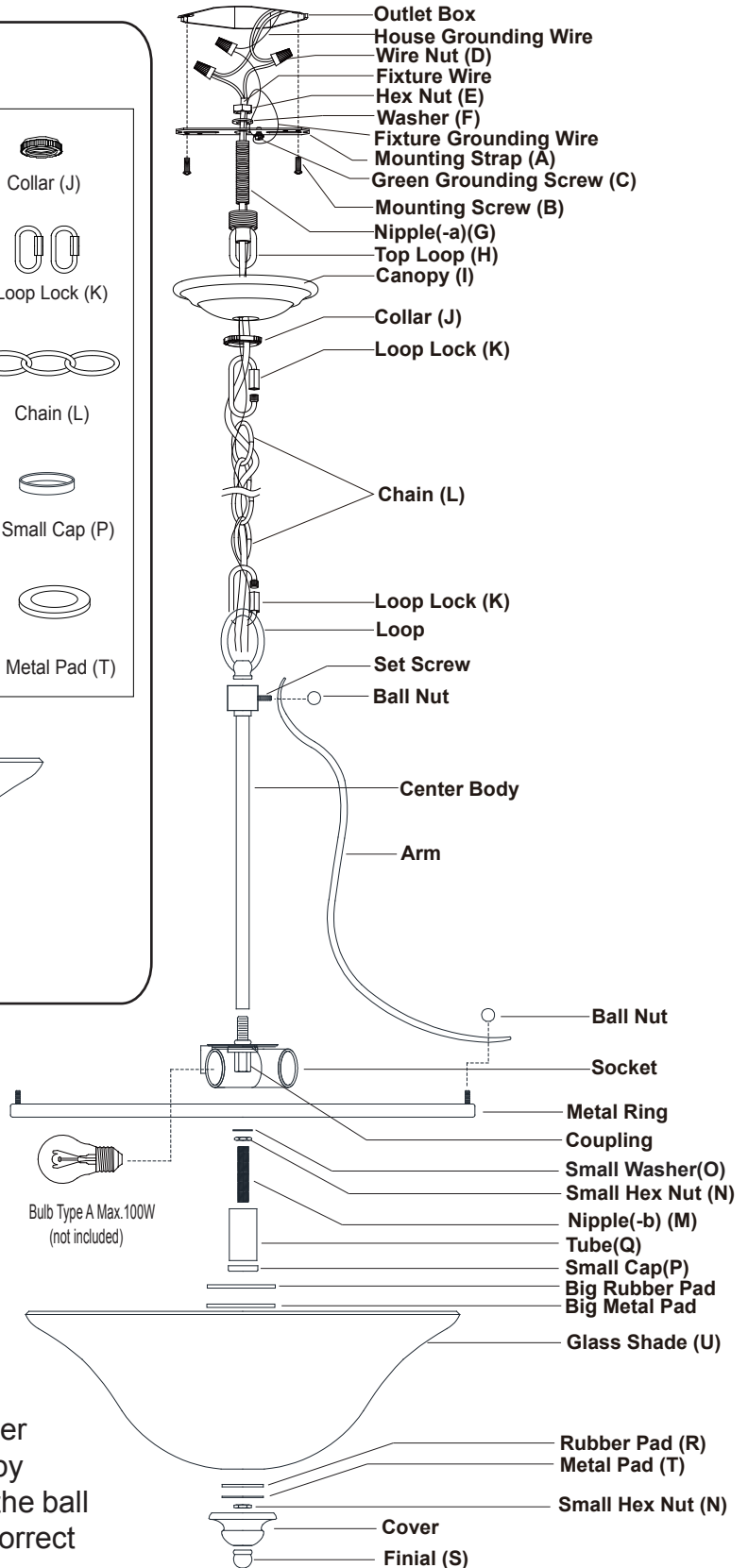


Parts Number (9551EW)

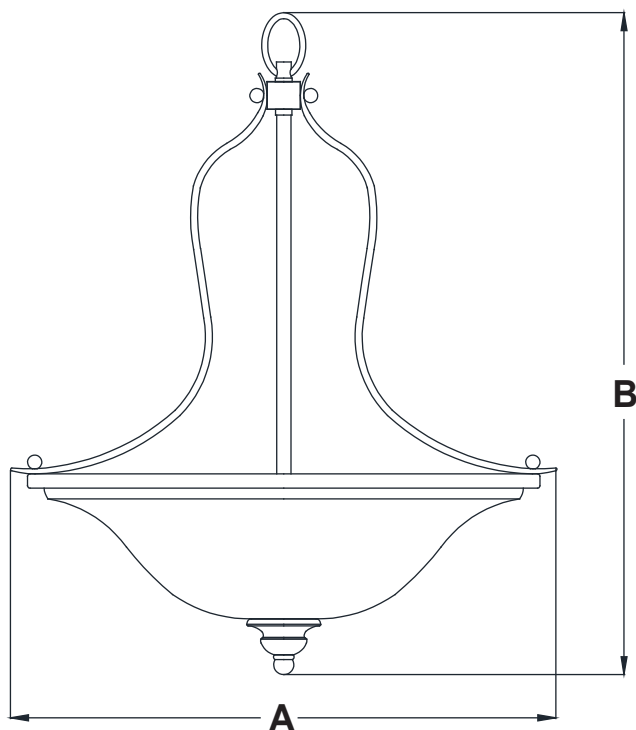


Glass Shade (U) (X1)

1. Attach nipple(-a) to the mounting strap, then secure it with a washer and hex nut.
2. Attach the mounting strap to the outlet box by using two mounting screws.
3. Secure the top loop to nipple(-a).
4. Secure the center body onto the stem of the socket.
5. Secure the loop to the stem of the center body.
6. Unscrew the ball nut from the metal ring.
7. Take one arm and place one end to the center body while place another end to metal ring by inserting set screws, secure it by fastening the ball nuts on the set screws. See illustration for correct position. Repeat with the other upper arms.



8. Choose the length of the chain you need, then weave the fixture wire and the fixture grounding wire through the chain. Then connect one end of the chain with the loop by using the loop lock.
9. Thread the fixture wire and fixture grounding wire through the collar, canopy, top loop, nipple(-a) and mounting strap.
10. Connect the other end of the chain with the top loop by using the loop lock.
11. Pull out the outlet wires and the house grounding wire from the outlet box. Make wire connections by using the wire nuts:
  - The smooth wire (marked) from the fixture to the black wire from the power source.
  - The ridged wire (unmarked) from the fixture to the white wire from the power source.
  - Attach the fixture grounding wire to the mounting strap with the green grounding screw. Then connect it to the house grounding wire with a wire nut.Carefully put the wires back into the outlet box.
12. Attach the canopy to the mounting strap by inserting the top loop, then secure it with the collar.
13. Attach nipple(-b) to the coupling of the socket, and secure it with a small washer and small hex nut.
14. Slide the tube, small cap with the open side facing upward, big metal pad and big rubber pad to the coupling in order.
15. Install bulbs(not included). See relamping label at socket area or packaging for maximum allowed wattage.
16. Slip the glass shade up through nipple(-b) and secure it with a rubber pad, metal pad and small hex nut. Slide the cover up to glass shade, and secure it with the finial.
17. Turn on the power at the main fuse or circuit breaker box.



**A: 18"**

**B: 22"**