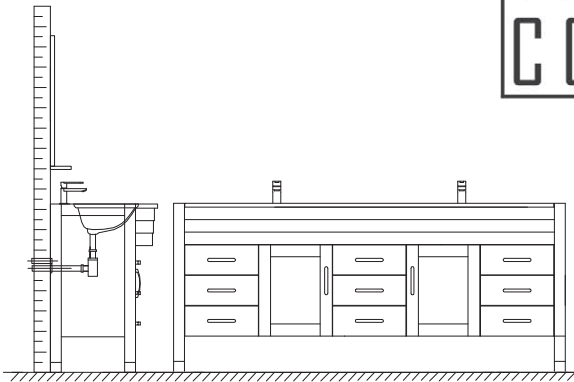
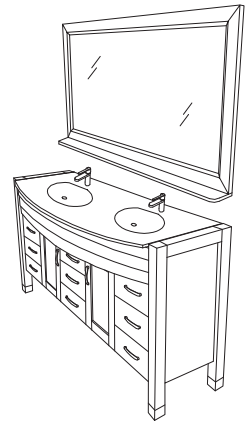
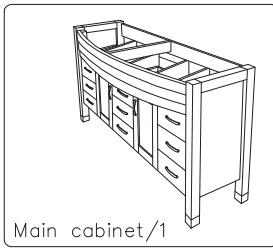


WYNDHAM COLLECTION

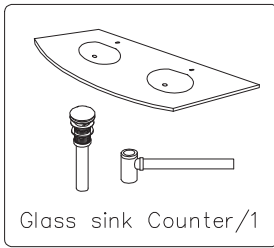
- Prior to installation please check received items against the "Packing List". Please report any missing items to your retailer immediately.
- Protect all surfaces from sharp objects, high heat sources, direct prolonged sunlight and chemical hazards.
- Professional installation recommended.



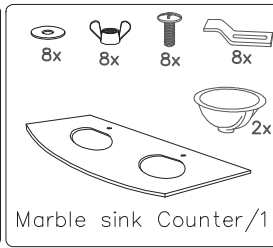
PACKING LIST



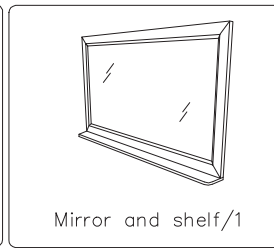
Main cabinet/1



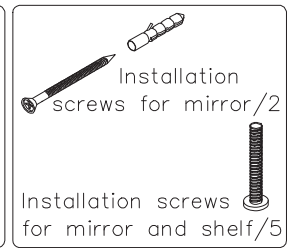
Glass sink Counter/1



Marble sink Counter/1



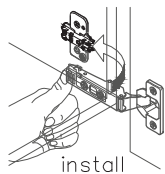
Mirror and shelf/1



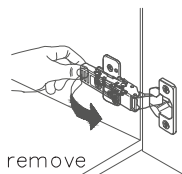
Installation screws for mirror/2

Installation screws for mirror and shelf/5

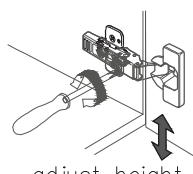
INSTALLATION AND ADJUSTMENT OF HINGES



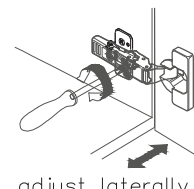
install



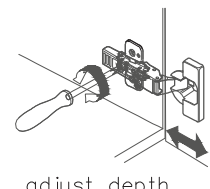
remove



adjust height

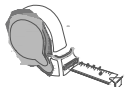


adjust laterally



adjust depth

REQUIRED TOOLS NOT IN BOX



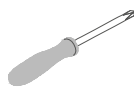
Tape measure



Pencil



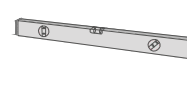
Electric Drill



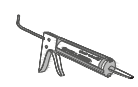
Phillips Screwdriver



Adjustable Wrench

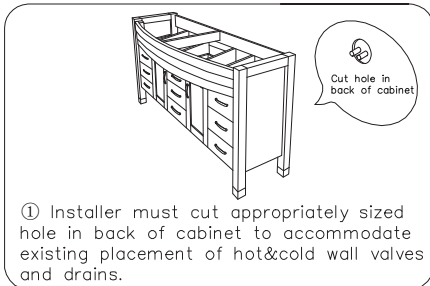


Spirit Level

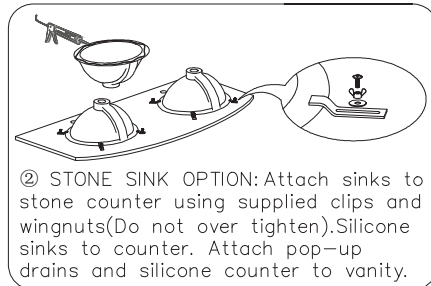


Silicone sealant

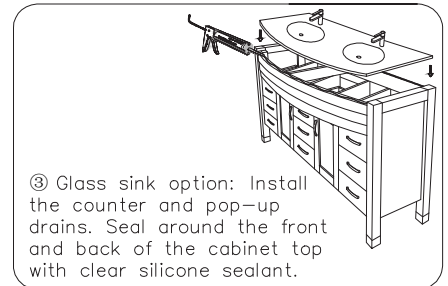
INSTALLATION INSTRUCTIONS



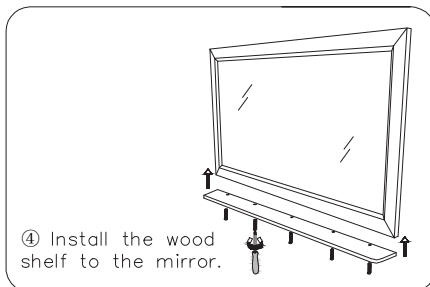
① Installer must cut appropriately sized hole in back of cabinet to accommodate existing placement of hot&cold wall valves and drains.



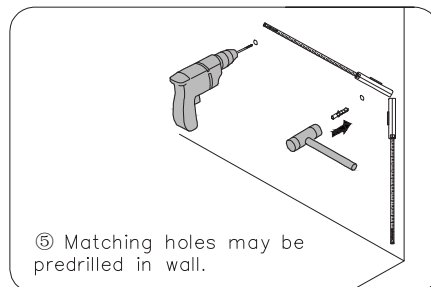
② STONE SINK OPTION: Attach sinks to stone counter using supplied clips and wingnuts (Do not over tighten). Silicone sinks to counter. Attach pop-up drains and silicone counter to vanity.



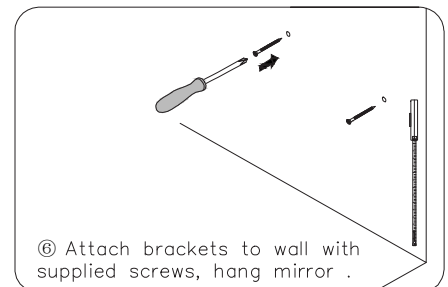
③ Glass sink option: Install the counter and pop-up drains. Seal around the front and back of the cabinet top with clear silicone sealant.



④ Install the wood shelf to the mirror.



⑤ Matching holes may be predrilled in wall.



⑥ Attach brackets to wall with supplied screws, hang mirror.

WC-A-2200-78
INSTALLATION