

8914CM Curb Mount Adapter

Tel: 877-50-USSUN
www.ussunlight.com
support@ussunlight.com

The Curb Mount Adapter (CMA) is intended to be installed with U.S. Sunlight solar attic fans. It is compatible with any our roof mounted Solar Attic Fans with 14" fan blades. The CMA is suitable for application where installation above the roof deck is desirable. Typical applications include flat, low slope, and tile roofs.

These instructions are in addition to those provided for installation of the solar attic fan. Please read both sets of instructions before proceeding with the installation.

Parts Included:

- (1) Curb Mount Adapter
- (12) Screws

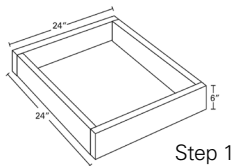
Tools Required:

- Screwdriver and any tools required for Solar Attic Fan Installation
- *See Solar Attic Fan instructions for list of required tools*

This product requires the additional purchase of a U.S. Sunlight Solar Attic Fan. Call 1-877-50-USSUN to order.

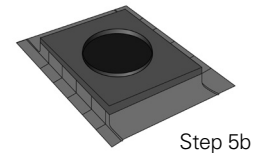
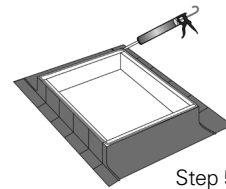
If there is a problem with your U.S. Sunlight product call us at 1-877-50-USSUN

Spare parts, installation advice, or recommendations for professional installers in your area are only a phone call away: 877-50-USSUN



Step 1: Building the Curb

Build a curb with outside dimensions of 24" x 24" x 6" with treated lumber. If you are unsure of the proper construction of a curb, consult a professional.



Step 5: Mount the Curb Mount Adapter

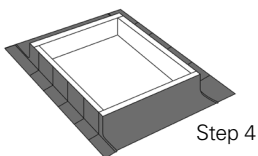
Run a bead of weather proof sealant around the top edge of the curb. Place the CMA on top of the curb and secure using the provided screws – three (3) on each side.

Step 2: Locating and Cutting the Hole

Begin installation of the CMA by following Steps 1 – 5 of the Solar Attic Fan installation instructions.

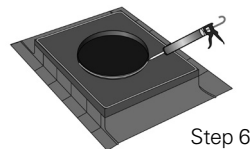
Step 3: Remove Shingles and Roofing Material from Around the Hole

Remove Shingles and roofing material in an area approximately 27" x 27" to allow for room to install and flash the curb.



Step 4: Mount the Curb

Position the curb over the vent hole making sure it is square with the roof tiles. Securely mount the roof curb to the framing structure or decking of the roof. Flash in the roof curb using appropriate flashing materials for your type of roof.



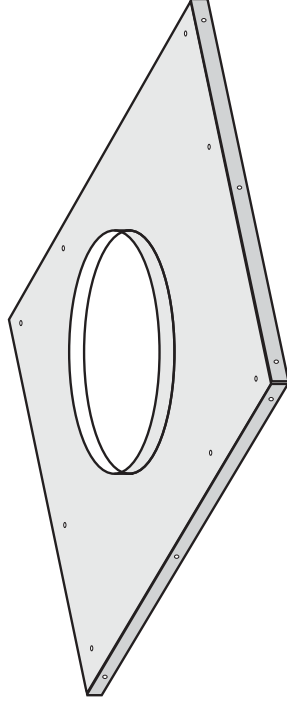
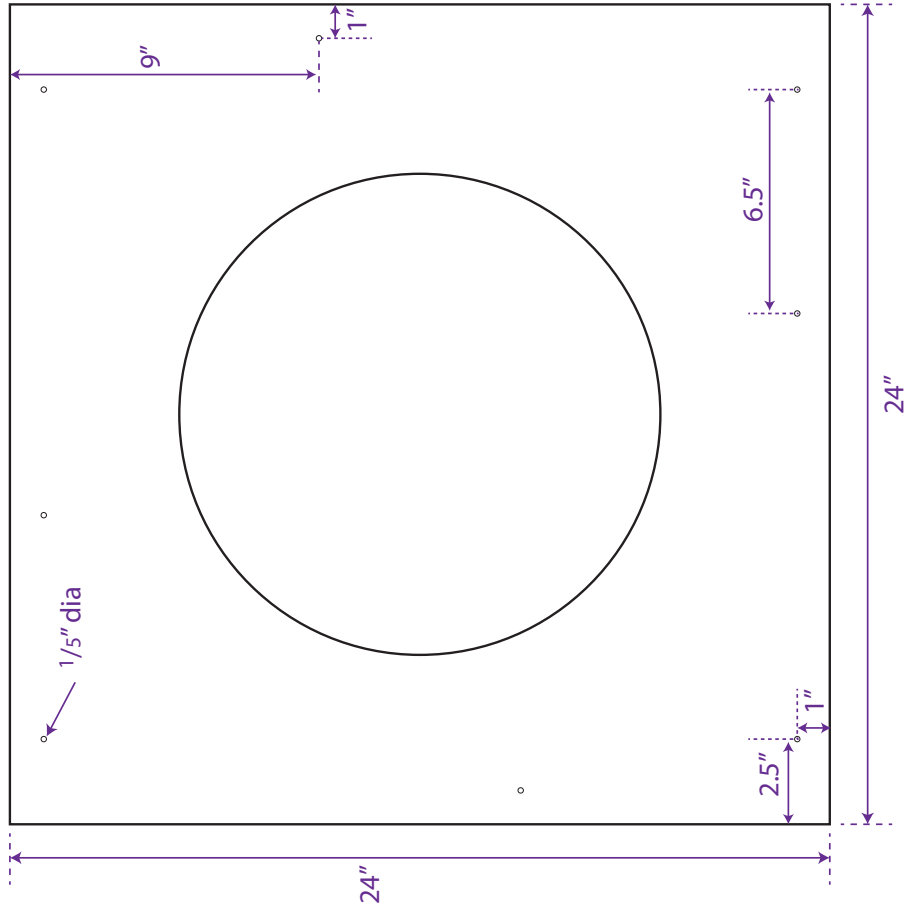
Step 6: Mount the Solar Attic Fan on the Curb Mount Adapter

Run a bead of weather proof sealant around the upturned circle in the center of the CMA and another bead along the top of the CMA near the edge. Place the Solar Attic Fan on top of the CMA and secure with the screws provided with the solar attic fan. Make sure the holes in the fan flashing line up with the holes in the CMA. Caulk all screw heads on the top of the fan flashing and along the edge of the CMA.

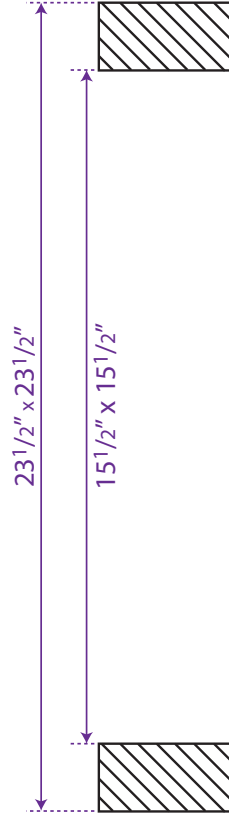
Step 7: Proceed with Solar Attic Fan Installation

Proceed installing the Solar Attic Fan, beginning with Step 9 in the Solar Attic Fan installation instructions

PLAN SECTION



CURB INFORMATION



SIDE SECTION

