



ITEM #0309016

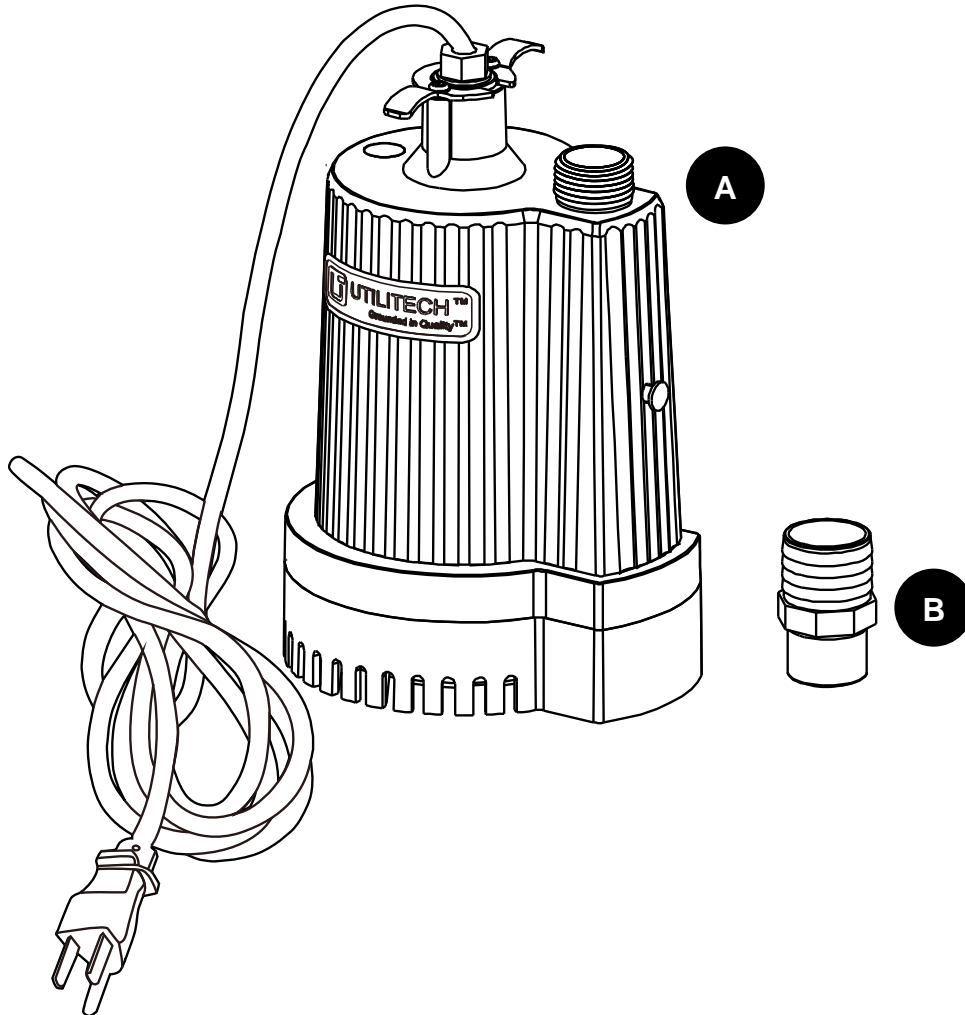
# NON-AUTOMATIC

# SUBMERSIBLE UTILITY PUMP

MODEL: PPU6

Utilitech® is a registered trademark of LF, LLC. All Rights Reserved.

**Español p. 9**



## PACAKGE CONTENTS

Part	Description	Quantity
A	Pump	1
B	Adaptor	1

## ATTACH YOUR RECEIPT HERE

Serial Number \_\_\_\_\_

Purchase Date \_\_\_\_\_



**Questions, problems, missing parts?** Before returning to your retailer, call our customer service department at 1-800-346-7611, 8 a.m. – 5 p.m., EST, Monday – Friday.

## TABLE OF CONTENTS

---

Specifications.....	2
Construction.....	2
Safety information.....	3
Performance.....	4
Preparation.....	5
Installation instructions.....	5
Operation instructions.....	6
Airlock.....	7
Care and maintenance.....	7
Troubleshooting.....	8
Warranty.....	8

## SPECIFICATIONS

---

- Power supply required..... 115V, 60 HZ
- Water temperature range.....Max. 77°F (25°C)
- Operation position..... Vertical
- Individual branch circuit required.....10-amp minimum
- Operating water depth - beginning minimum.....1 in.
- Ending water level - max.....1/2 in.
- Discharge connection..... 3/4 in. garden hose thread or 1-1/4 in. hose with included adaptor
- Discharge hose diameter.....5/8 in. minimum I.D.
- Discharge hose length.....50 ft. maximum recommended hose length
- Motor..... Permanent Split Capacitor, with thermal overload protection
- Power cord.....SJTW, 18AWG/3C, 10 ft.

## CONSTRUCTION

---

- Motor housing.....Flame retardant nylon
- Volute (Intake screen)..... Reinforced nylon
- Impeller..... Glass reinforced thermo plastic



## SAFETY INFORMATION

---

Please read and understand this entire manual before attempting to assemble, operate or install the product. If you have any questions regarding the product, please call customer service at 1-800-346-7611, 8 a.m. - 5 p.m., EST, Monday - Friday.

### WARNING

- **Always make sure the pump is unplugged as soon as the water level reaches 1/2 in. At water levels less than 1/2 in., the pump is attempting to pump air, which will cause the pump to overheat and wear out. Running the pump without sufficient water will damage the pump and void the pump's warranty.**
- Do not pump flammable or explosive liquids such as oil, gasoline, kerosene, ethanol, etc. Do not use in the presence of flammable or explosive vapors. Using this pump with or near flammable liquids can cause an explosion or fire, resulting in property damage, serious personal injury and/or death.
- Always disconnect the pump from its power source before inspection.
- Do not stand in water when the pump is connected. Do not handle pump with wet hands.
- Do not touch the pump housing while it is operating, as the pump may be HOT and can cause serious skin burns.
- Do not disassemble the motor housing. This pump has NO repairable internal parts, and disassembling may cause an oil leak or dangerous electrical wiring issues.

### CAUTION

- This submersible utility pump is designed for portable applications. It can drain or remove water from the following: pits, sinks, window wells, basements, swimming pool covers, boats, low spots in yards, or other flooded areas. This pump has not been tested or approved for use in swimming pools or in salt-water marine areas.
- This pump is made of high-strength, corrosion-resistant materials. It will provide trouble-free service for many years when properly installed, maintained, and used. However, inadequate electrical power to the pump, or blockage by ice, dirt, or debris may cause the pump to fail, potentially bringing about additional water damage. To minimize the potential for water damage due to pump failure, please read the section of this manual regarding common pump problems and remedies or call one of our pump experts at 1-800-346-7611.
- This pump is not designed to function as a permanently installed sump pump. It is also not engineered to be run continuously as a “fountain” or “waterfall” pump. Because this pump has an oil-filled motor, it should NOT be used in water containing fish. The pump should be used with a 5/8 in. or larger inside diameter garden hose, or use with hose kit (Item #0313726).
- For safety, the pump motor has an automatically resetting thermal protector that automatically will turn off the pump if it becomes too hot. **Overuse of this feature will damage the pump and void the warranty.**
- Once the thermal protector detects that the pump has cooled to a safe temperature, it will allow the pump to operate normally. If the pump is plugged in, it may restart unexpectedly.

## Additional Safety Precautions

1. Know the pump applications, limitations, and potential hazards.
2. Make certain the electrical power source is adequate for the requirements of the pump.
3. ALWAYS disconnect the power to the pump and drain all water from the system before servicing.
4. Secure the pump on a solid base to keep the pump vertical and above mud and sand during operation to maximize pumping efficiency and prevent clogging and premature pump failure.
5. Secure the discharge hose before starting the pump. Pump torque may cause an unsecured discharge hose to “whip”, possibly causing personal injury and/or property damage.
6. Before using the pump, check hose for holes or excess wear, which could cause leaks, and be sure hose is not kinked or making sharp angles. A straight hose allows the pump to move the greatest amount of water quickly.
7. Check that all hose connections are tight to minimize leaks.
8. Connect the pump DIRECTLY to a grounded, GFCI outlet.
9. Extension cords may not deliver sufficient voltage to the pump motor. Extension cords present a life-threatening safety hazard if the insulation becomes damaged or the connection ends fall into water.
10. Make certain the electrical circuit to the pump is protected by a 10-amp or larger fuse or circuit breaker.
11. Periodically inspect pump and system components, to be sure pump inlets are free of mud, sand, and debris. DISCONNECT PUMP FROM THE POWER SUPPLY BEFORE INSPECTING.
12. Wear safety glasses at all times when working with pumps.
13. Follow all electrical and safety codes, particularly the National Electrical Code (NEC) and in the workplace, the Occupational Safety and Health Act (OSHA).
14. This unit is designed only for use on 115 volts (single phase), 60 Hz, and is equipped with an approved 3-conductor cord and 3-prong grounded plug. DO NOT REMOVE THE GROUND PIN UNDER ANY CIRCUMSTANCES. The 3-prong plug must be directly inserted into a properly installed and grounded 3-prong, grounding-type receptacle. **Do not use pump with a 2-prong wall outlet.** Replace the 2-prong outlet with a properly grounded 3-prong receptacle (**a GFCI outlet**) installed in accordance with the National Electrical Code and local codes and ordinances. All wiring should be performed by a qualified electrician.
15. Protect the electrical cord from sharp objects, hot surfaces, oil, and chemicals. Avoid kinking the cord. **Do not use damaged or worn cords.**

## PERFORMANCE

---

Model	HP	GPH (GPM) of Water @ Total Feet (Meters) of Lift					Maximum Lift
		5 ft. (1.5 m)	10 ft. (3 m)	15 ft. (4.6 m)	20 ft. (6.1 m)	25 ft. (7.5 m)	
PPU6	1/6	1,400	1,300	1,100	750	300	0

For best performance, the maximum recommended hose length is 50 ft. The pumping capacity or water flow rate of any pump depends on several factors. Refer to the table below for the water flow rate based on horizontal (0 ft. of Lift) garden hoses of various diameters and of various lengths and a constant water pressure of 11 PSI.

Hose Size	25 ft. Hose Length	50 ft. Hose Length	75 ft. Hose Length	100 ft. Hose Length
<b>INSIDE DIAMETER</b>	<b>(RECOMMENDED LENGTHS)</b>		<b>(LENGTHS NOT RECOMMENDED)</b>	
3/4 in.	18.7 GPM	12.9 GPM	10.4 GPM	8.9 GPM
5/8 in.	11.6 GPM	8.0 GPM	6.4 GPM	5.5 GPM

The larger the inside diameter and the shorter the length of hose, the less pressure that is lost (or the larger the flow rate). The maximum pressure produced by this pump is about 11 PSI. If the hose runs uphill or is extra long, use a larger diameter hose or rigid pipe. **Note:** Regardless of hose size, this pump will not lift more than 26 ft.

## PREPARATION

**⚠ WARNING: Always use handle to lift pump. Never use power cord to lift pump. To avoid skin burns, unplug and allow time for the pump to cool after periods of extended use.**

Before beginning assembly of product, make sure all parts are present. Compare parts with package contents list and hardware contents above. If any part is missing or damaged, do not attempt to assemble the product. Contact customer service for replacement parts.

**Estimated Assembly Time (New installation): 5 minutes**

Materials Required for Assembly (not included): Garden Hose or Hose Kit (Item #0313726)

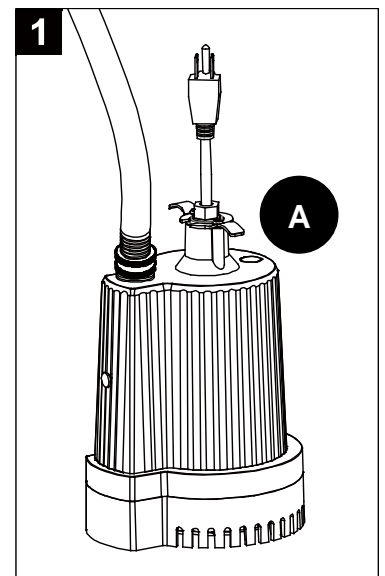
The pump should rest on a level, solid base.

- Do not suspend the pump by the discharge hose or power cord.
- Keep the pump inlet screen clear.
- Do not install pump directly on sand or dirt. A minimum water level of 1 in. is required to prime the pump.

## INSTALLATION INSTRUCTIONS

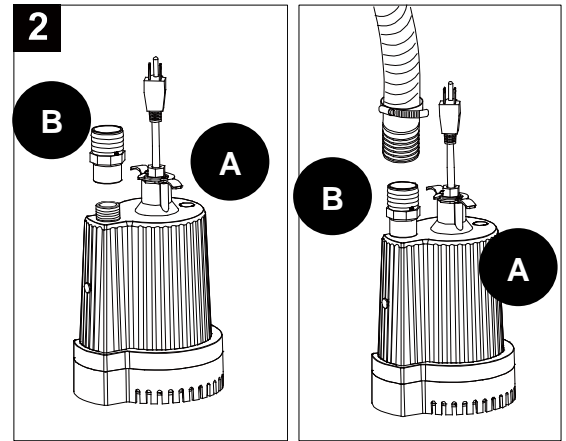
1. Attach a 5/8 in. inside diameter or larger garden hose (not included) to the pump (A) outlet.

**Note:** Be sure the hose end has a rubber washer to minimize water leaks.



2. If you would prefer to use a larger hose in order to pump water away more quickly, attach the included adaptor (B) to pump (A), and then securely attach the Hose Kit (Item #0313726, sold separately) to the adaptor (B).

**WARNING:** Secure the discharge hose before plugging in the pump. Pump torque may cause an unsecured discharge hose to “whip”, possibly causing personal injury and/or property damage.



## **OPERATION INSTRUCTIONS**

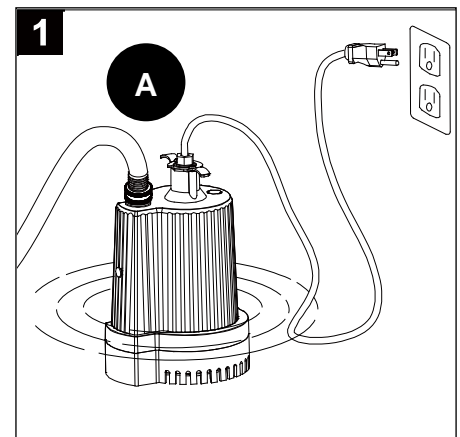
**NOTICE:** Make certain you unwind the garden hose completely. Kinks in the hose will restrict the pump, preventing it from priming, which is the first step to pumping water. The water level must be at 1 in. for the pump to prime and operate.

1. Plug the pump (A) into a 115 volt GFCI power outlet.  
**WARNING:** Do not let plug fall in water and do not stand in water while the pump (A) is plugged in.

The pump (A) will start operating when the power cord is plugged into the outlet.

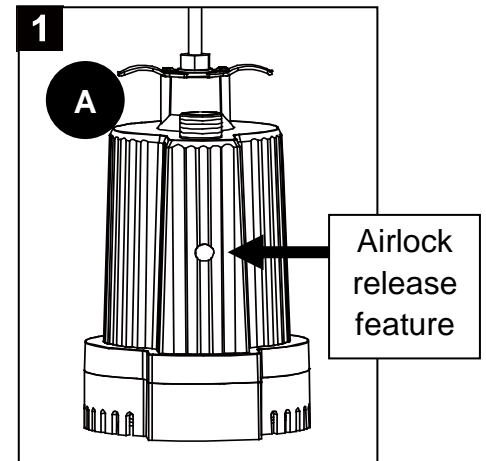
Once the pump (A) has removed the water down to 1/2 in., unplug the pump. **CAUTION:** Failure to unplug it will result in the pump going into thermal overload.

- **CAUTION:** Do not run the pump (A) dry. Operating the pump (A) without water will cause damage to seals and will cause the pump (A) to fail, thereby voiding the pump’s warranty.
- Remove the pump (A) and hose from the location when finished pumping, as the hose still has water that can drain back through the pump. Remove remaining water with squeegee, mop, sponge, towel, wet/dry vac, etc.



## AIRLOCK

This pump (A) is a centrifugal utility pump, designed to efficiently remove water. However, it cannot move air. If air is trapped inside the pump (A) (a condition called “airlock”), the pump cannot pump water out even though the pump (A) is completely submerged. This pump (A) has an airlock release feature (see Fig. 1). Air flows out through the airlock release feature, eliminating the airlock so that the pump can operate properly. If debris blocks the anti-airlock hole or if the anti-airlock valve cannot move freely, unplug the pump (A), clean out the anti-airlock hole, and restart the pump (A). Alternately, drain the water out of the garden hose, keep the end of the hose out of the water, and plug in the power cord, restarting the pump (A).

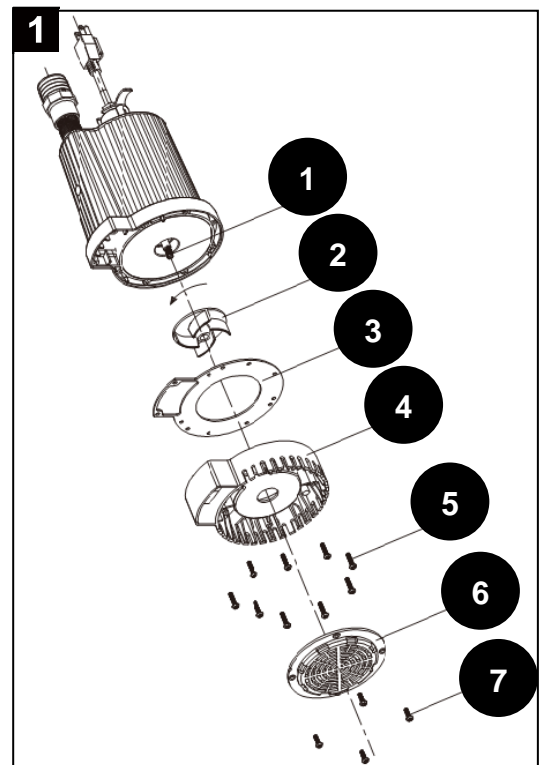


**CAUTION: This valve is for anti-airlock purposes. Leakage of air or water is NORMAL. DO NOT REMOVE or PLUG THIS VALVE!**

## CARE AND MAINTENANCE

Periodically unplug the pump, making certain your hands are dry, and you are not standing in water. When the power is disconnected, inspect the pump inlets and remove all debris, then plug pump back into the grounded (GFCI) outlet.

1. To clear a pump clogged with debris, first, **UNPLUG PUMP** from electrical power. Then, referring to Fig. 1, unscrew the stainless screws (7), and remove the screen (6), unscrew the stainless screws (5), and remove the volute (4), and the seal gasket (3). Use a flathead screwdriver to hold the shaft (1), then turn the impeller (2) counterclockwise to release the impeller (2). Remove debris from around the shaft (1) and on/under the impeller (2). Reassemble.



## TROUBLESHOOTING

If you have any questions regarding the product, please call customer service at 1-800-346-7611, 8 a.m. - 5 p.m. (EST), Monday – Friday.

**Note: Do not disassemble the motor housing. This pump has NO repairable internal parts, and disassembling may cause an oil leak or dangerous electrical wiring conditions.**

Problem	Possible Cause	Corrective Action
Pump does not start or run	<ol style="list-style-type: none"> <li>1. Blown fuse</li> <li>2. Tripped breaker</li> <li>3. Plug disconnected</li> <li>4. Thermal overload</li> <li>5. Corroded plug</li> <li>6. Motor failed</li> </ol>	<ol style="list-style-type: none"> <li>1. Replace fuse</li> <li>2. Reset breaker</li> <li>3. Secure plug</li> <li>4. Unplug the pump for 30 minutes, then plug in</li> <li>5. Clean plug prongs</li> <li>6. Call 1-800-346-7611</li> </ol>
Pump cannot pump water out	<ol style="list-style-type: none"> <li>1. Screen blocked</li> <li>2. Hose kinked, bent sharply, or coiled</li> <li>3. Airlock</li> <li>4. Hose diameter too small</li> <li>5. Hose length too long</li> <li>6. Impeller loose on shaft</li> <li>7. Impeller broken</li> </ol>	<ol style="list-style-type: none"> <li>1. Clean screen</li> <li>2. Straighten hose</li> <li>3. Clean airlock release feature</li> <li>4. Use larger diameter hose</li> <li>5. Use shorter hose</li> <li>6. Reassemble impeller (See Fig. 1 in CARE AND MAINTENANCE)</li> <li>7. Call 1-800-346-7611</li> </ol>

## WARRANTY

This product is warranted against manufacturing defects for a period of 12 months from the date of purchase. Any misuse, abuse, or modification automatically voids this warranty. The distributor will repair or replace the pump if, in its sole determination, the pump failed due to defects in materials or workmanship.

### WARRANTY EXCLUSIONS

1. Neither the distributor, nor the store that sold this pump shall in any event be liable for any labor or similar expenses incurred in removing or repairing this pump.
2. The distributor specifically disclaims any implied warranties of merchantability and fitness for a particular purpose.
3. In no event shall the distributor be liable for consequential, incidental, or special damages resulting from or related in any manner to any distributor components or accessories.
4. The distributor disclaims all liability for improper installation or improper use of this product.

**Some states do not allow the exclusion or limitation of incidental or consequential damages. The above limitations and exclusions may not apply to you. In addition to the rights given you by this warranty, you may also have other rights which vary from state to state.**

For warranty claims, **DO NOT RETURN PUMP TO THE STORE!**

Call our customer service department at: 1-800-346-7611, Monday – Friday, 8:00 a.m. – 5:00 p.m., EST.

Printed in China