

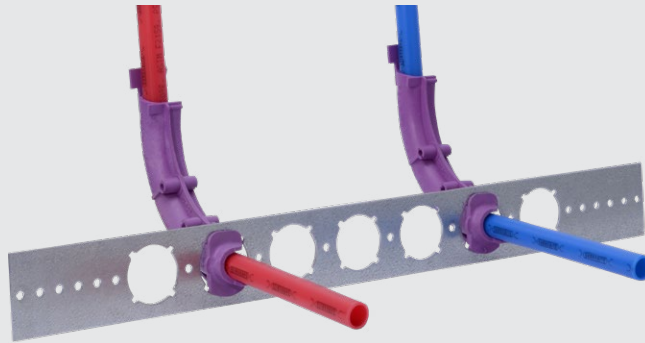


HOLDRITE
CONVERTING MAKESHIFT METHODS INTO ENGINEERED SOLUTIONS™

PEXRITE®

The Torchless Installation™

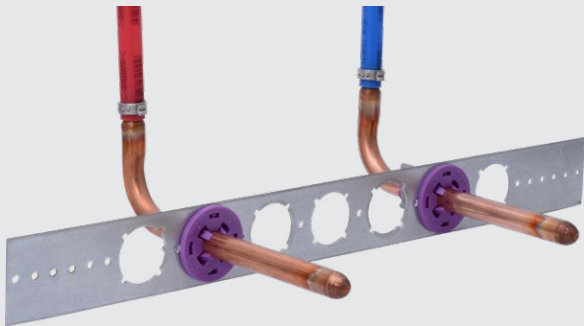
PEX STUB-OUT



**PEXRITE®
Turn-Out**

#704

PICK YOUR STUB-OUT METHOD



#701

**PEXRITE®
Lock-n-Load™**



#702

PEX TO COPPER STUB-OUT



Visit www.HOLDRITE.com to view PEXRITE® installation videos, technical information, and list pricing.

Pick Your Stub-Out Method

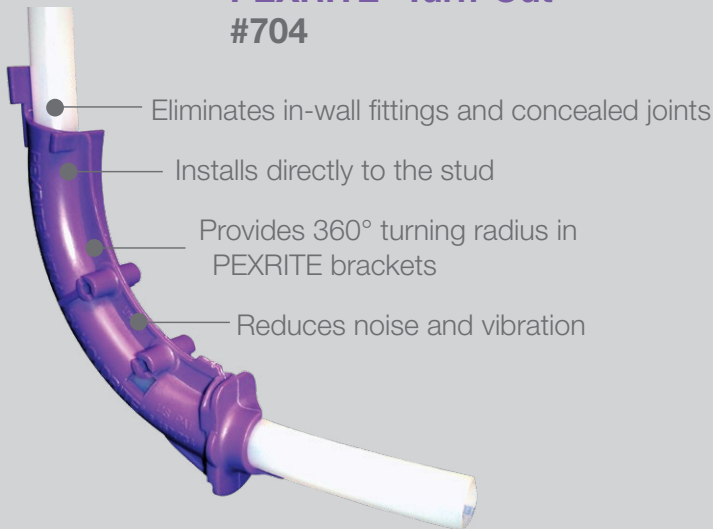
PEX SUPPORTS

For over fifteen years, HOLDRITE has been the expert in pioneering and producing innovative PEX support products. PEXRITE®, The Torchless Installation™, allows contractors to quickly install PEX tubing regardless if they stub-out in PEX or copper tubing.

As the industry leader in PEX tubing supports, our engineering design team has observed our PEXRITE technologies successfully installed by contractors. Their various installation methods led us to a more thorough understanding of PEX tubing performance, differences in regional installation requirements, and the challenges of various plumbing applications.

At the forefront of the evolution of PEX in North America, HOLDRITE has been listening, learning and innovating within the plumbing ecosystem.

PEX TUBING PEXRITE® Turn-Out #704



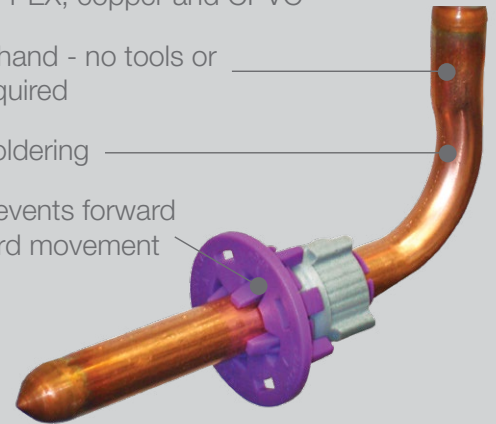
COPPER OR RIGID TUBING PEXRITE® Lock-n-Load™ #701

Designed for PEX, copper and CPVC

Tightens by hand - no tools or hardware required

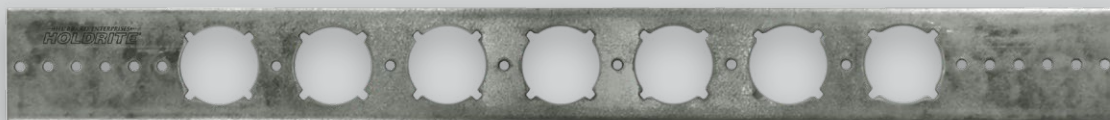
Eliminates soldering

Secure fit prevents forward and backward movement



IMPORTANT:
Confirm compatibility of copper ells with PEX tubing manufacturer.

PEXRITE® Supports Integrate Directly with PEXRITE® Brackets Only



#103-18

PEXRITE® Turn-out #704 Installation Instructions

1 Install PEXRITE bracket to studs.



2 Insert #704 into bracket from the front.



3 Position #704 until bracket fits into groove, then rotate into place.



4 Insert PEX tube at 45° angle and set stub-out length.



5 Bend tube forward and snap into #704.



6 Complete! No concealed joint in the wall.



PEXRITE® Lock-n-Load #701 Installation Instructions

1 Install PEXRITE bracket to studs.



2 Insert #701 into bracket from the front.



3 Lock #701 into bracket with thumbs.



4 Load tubing through #701 from back.



5 Push and twist back nut by hand, until tight.



6 Complete! Secures stub-out with no solder.





HOLDRITE[®]
CONVERTING MAKESHIFT METHODS INTO ENGINEERED SOLUTIONS[™]

PEXRITE[®]
THE TORCHLESS INSTALLATION[™]

PEXRITE[®] Lock-n-Load #702 Installation Instructions

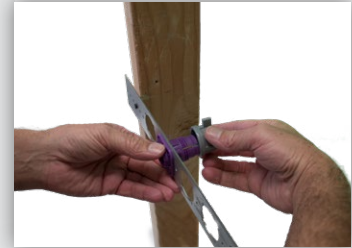
- 1** Install a PEXRITE[®] bracket onto the front of wall studs.



- 2** Snap the main purple body of the insert into the front of the bracket.



- 3** Snap the grey nut onto the back of the purple insert.



- 4** Slide a 3/4" tube or bullet through the insert. Lock the tubing in position by tightening the grey nut clockwise, by hand.



- 5** Installation is complete.



PIPE SUPPORT BRACKETS AND STUB-OUT SUPPORTS

Model #	Description
103-18-LW	Galvanized bracket with 13/8" keyed holes, on 2" centers, 20" long.

PEX STUB-OUTS

Model #	Description
704-L	Turn-out supports 3/8" & 1/2" CTS PEX tubing. No tools required. Temp. range: -10° F to +180° F.

PEX-TO-COPPER STUB-OUTS

Model #	Description
701-LW	Stub-out clamp supports 1/2" CTS PEX, Copper & CPVC tubing. No tools required. Temperature range: -10° F to +140° F
702-LW	702-LW Stub-out clamp supports 3/4" CTS PEX, Copper & CPVC tubing. No tools required. Temperature range: -10° F to +140° F.