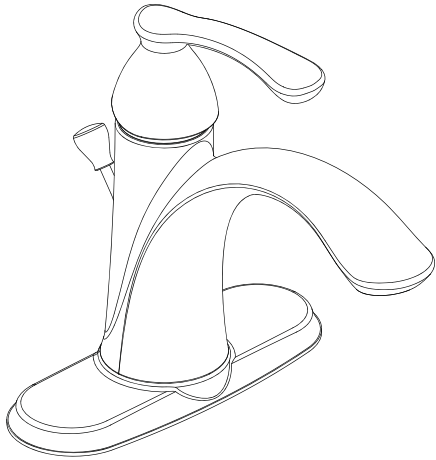


Instructions for Models:

SB-2011
SB-2011-BN



Need Help?

For additional assistance or service call:

SPEAKMAN Company
400 Anchor Mill Road
New Castle, DE 19720

PHONE: 800-537-2107
EMAIL: customerservice@speakmancompany.com
WEB: www.speakmancompany.com

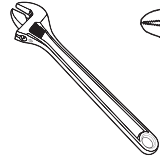
92-SB-2011-R1

What You Need To Know:

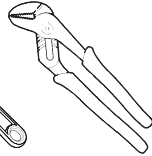
Tools:

Required:

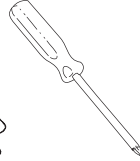
* Adjustable
Wrench



* Groove Joint
Plier



* Phillips
Screwdriver



* Thread Seal Tape

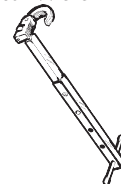


Helpful:

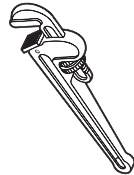
* Supply Lines



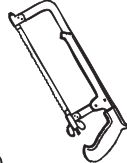
* Basin Wrench



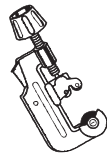
* Pipe Wrench



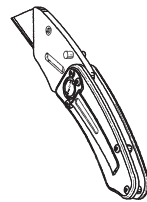
* Hacksaw



* Tubing Cutter



* Utility Knife



* Eye Protection



What You Need To Know: Important Notes:

Be sure to read instructions thoroughly before beginning installation. Do not overtighten any connections or damage may occur. This faucet has an operating range of 20-80 psi.

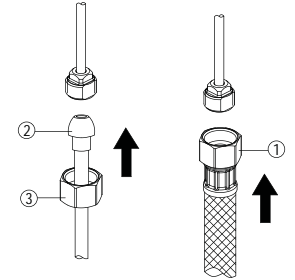
Safety Tips:

Cover your drain to prevent loss of parts.
Be sure to wear eye protection while cutting pipe.

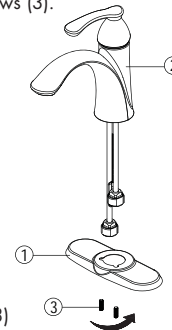
Maintenance:

Your new Lavatory Faucet is designed for years of trouble-free performance. Keep it looking new by cleaning it periodically with a soft cloth. Avoid abrasive cleaners, steel wool and harsh chemicals as these will dull the finish and void your warranty.

- ③ Make connections to water lines. Use 1/2" IPS faucet connections (1) or use the supplied coupling nuts (3) with 3/8" O.D. ball-nose risers (2). Use wrenches to tighten connections. Do not overtighten.

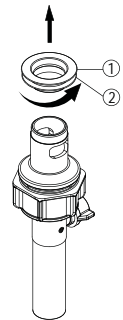


- ① Shut off water supply. Remove old faucet. Clean sink surface in preparation for new faucet. From underneath, secure the escutcheon (1) to the faucet (2) with screws (3).

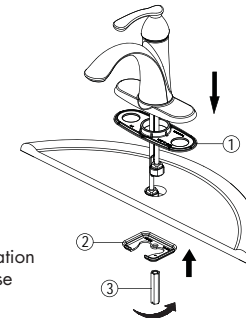


NOTE:
If a single hole installation is preferred, do not use escutcheon (1) or screws (3)

- ④ Remove flange (1) and rubber washer (2) from pop-up drain assembly.

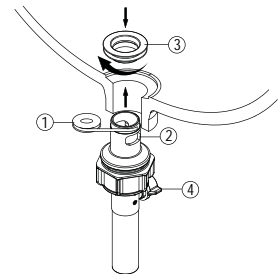


- ② Place gasket (1) on bottom of new faucet. Place faucet through mounting holes in sink. Secure faucet to sink using washer (2) and nut (3) provided.

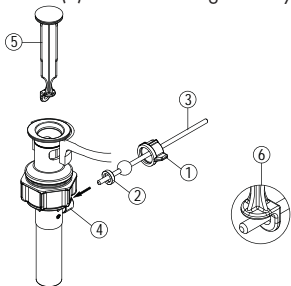


NOTE:
If a single hole installation is preferred, do not use supplied gasket (1)

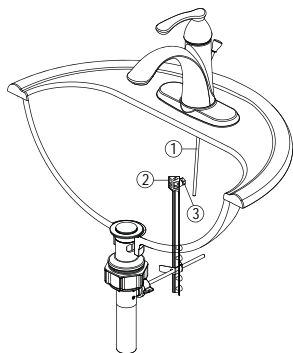
- ⑤ Add thread seal tape (1) to the drain body (2). Apply the provided gasket or plumber's putty to the underside of the flange (3). Insert the threaded end of the drain body up through the drain hole and attach flange to the body with the pivot (4) pointing to the rear of the sink.



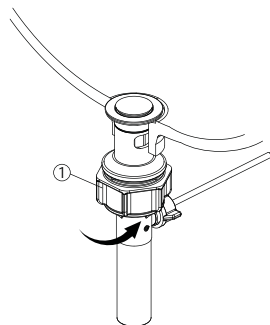
- 6** Unscrew the nut (1) from the pop-up body. Note: retain the seal (2) on the horizontal rod (3). Place the nut onto the horizontal rod and insert the rod and seal (2) into the pivot hole (4). Install stopper (5) as non-removable (6). Slide nut (1) on and hand tighten only.



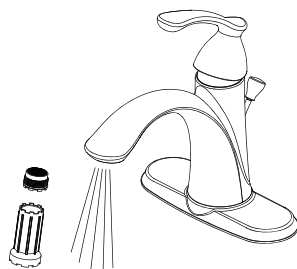
- 9** Insert lift rod (1) into strap (2) and tighten screw (3).



- 7** Tighten nut (1) clockwise until the pop-up drain assembly is secure.



- 10** **IMPORTANT:** After installation is completed, remove aerator with wrench. Turn on water supply and allow both hot and cold water to run for at least one minute each. While water is running, check for leaks. Replace aerator



- 8** Place one end of spring clip (1) on the end of horizontal rod (2). Insert rod through hole in lift rod strap (3). Secure with spring clip (1).

