



AquaSource® is a registered trademark of LF, LLC. All Rights Reserved.

ITEM #0065461

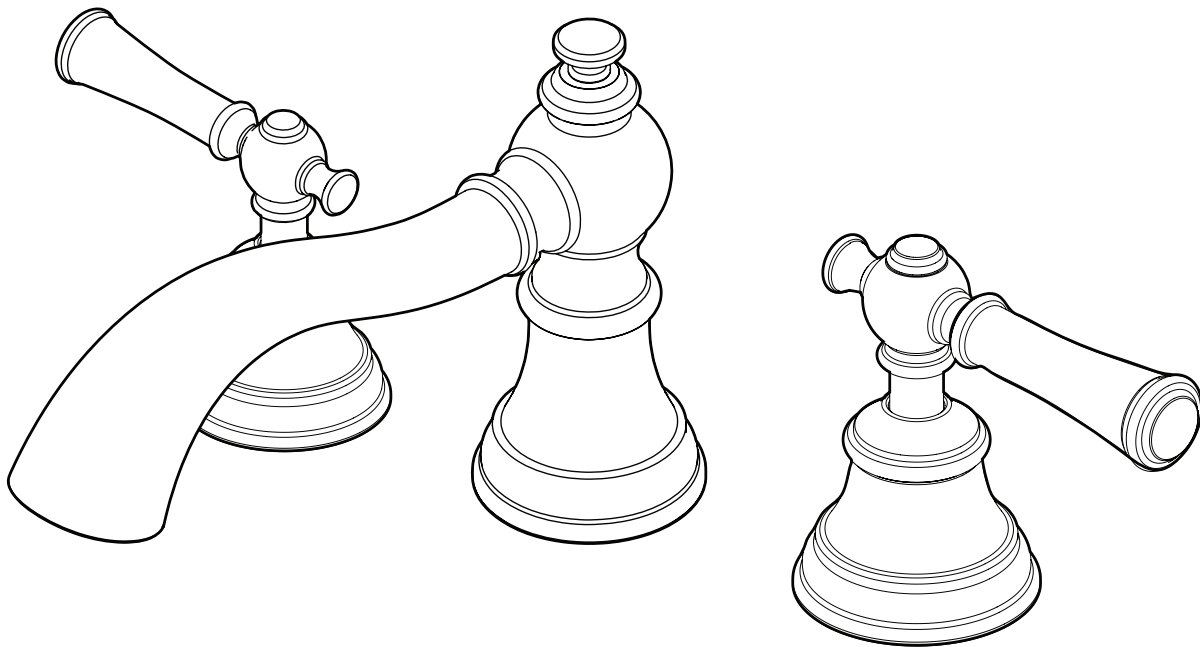
0065459

ROMAN TUB FAUCET

MODEL #461-5301

461-5327H2

Francias / Español p. 9



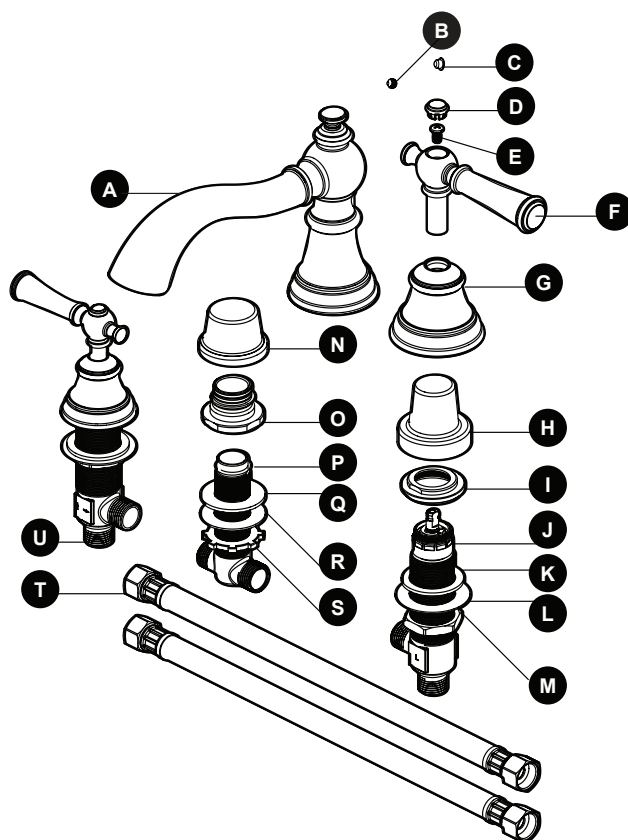
ATTACH YOUR RECEIPT HERE

Serial Number _____ Purchase Date _____



Questions, problems, missing parts? Before returning to your retailer, call our customer service department at 1-866-417-7564, 8 a.m. - 8 p.m., EST, Monday - Friday.

PACKAGE CONTENTS



PART	DESCRIPTION	QUANTITY
A	Spout	1
B	Screw (Preassembled to Spout (A))	1
C	Cap (Preassembled to Spout (A))	1
D	Handle Cap	2
E	Handle Screw	2
F	Handle	2
G	Handle Base	2
H	Plastic Cap (Preassembled to Hot End Valve (U) and Cold End Valve (J))	2
I	Flange (Preassembled to Hot End Valve (U) and Cold End Valve (J))	2
J	Cold End Valve	1
K	Rubber Washer (Preassembled to Hot End Valve (U) and Cold End Valve (J))	2
L	Metal Washer (Preassembled to Hot End Valve (U) and Cold End Valve (J))	2
M	Nut (Preassembled to Hot End Valve (U) and Cold End Valve (J))	2
N	Plastic Cap (Preassembled to Middle Body (P))	1
O	Connector (Preassembled to Middle Body (P))	1
P	Middle Body	1
Q	Rubber Washer (Preassembled to Middle Body (P))	1
R	Metal Washer (Preassembled to Middle Body (P))	1
S	Nut (Preassembled to Middle Body (P))	1
T	Hose	2
U	Hot End Valve	1



SAFETY INFORMATION

Please read and understand this entire manual before attempting to assemble, operate, or install the product.

WARNING:

- Follow the installation instructions carefully. Proper installation is the installer's responsibility.
- Failure to follow correct installation procedures can result in the faucet being loose, which can result in serious injury.

CAUTION:

- Check local building codes before beginning installation to ensure compliance.

PREPARATION

Before beginning the assembly of this product, make sure all parts are present. Compare parts with the package contents. If any part is missing or damaged, do not attempt to assemble the product.

Estimated Assembly Time: 120 minutes (including removal of old faucet)

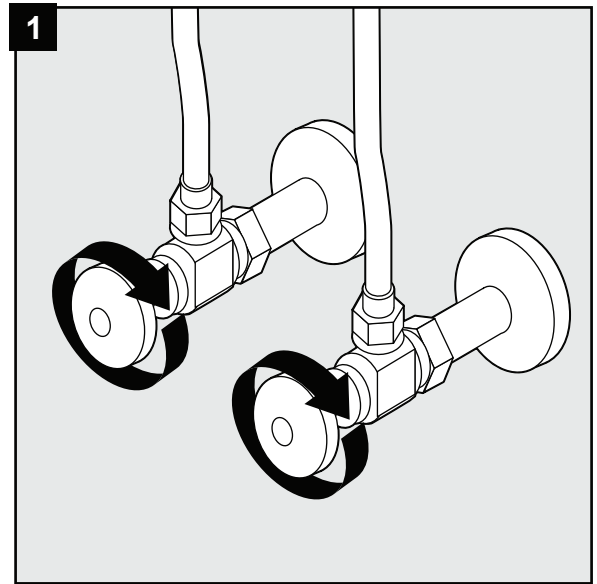
Tools Required for Assembly (not included): Adjustable Wrench, Phillips Screwdriver

Helpful Tools (not included): Basin Wrench, Water Supply Lines

ASSEMBLY INSTRUCTIONS

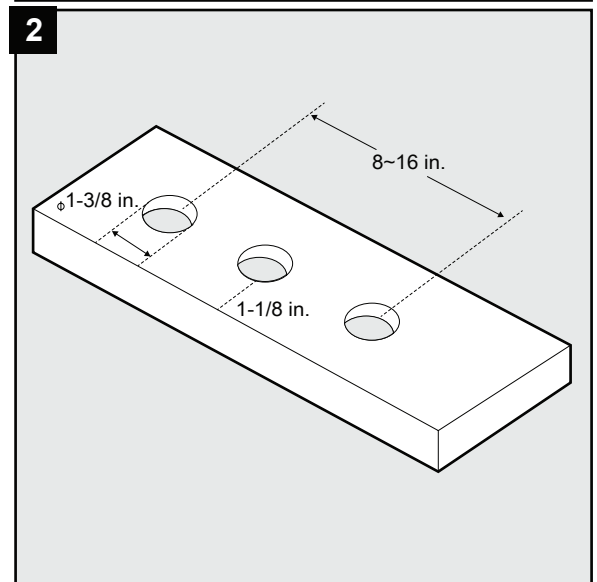
1. Shut off the water supply and remove the old faucet.

Note: Each valve stop should be turned clockwise.

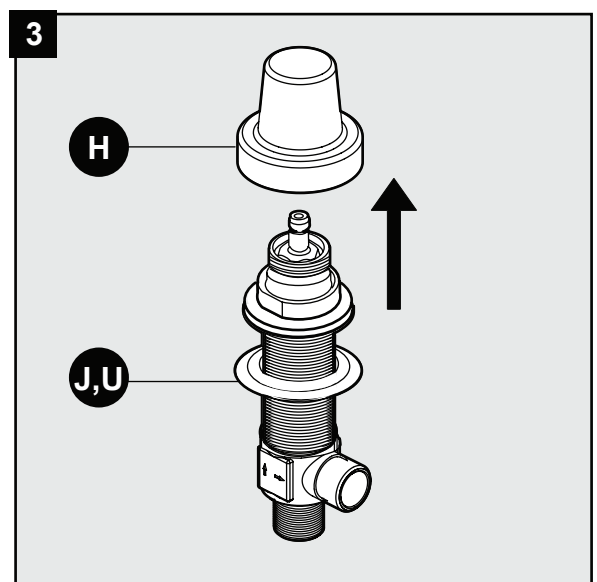


2. Drill holes in the finished deck (not included) per this diagram.

Note: This kit is intended for installations up to 2 in. thick.



3. Remove the plastic caps (H) from the cold end valve (J) and hot end valve (U).



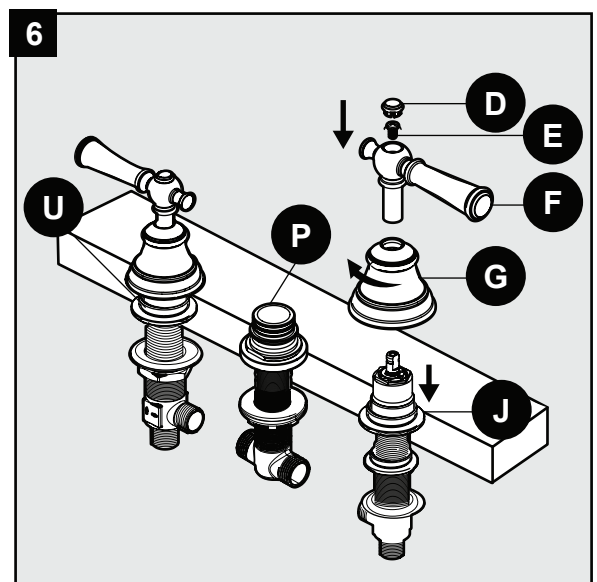
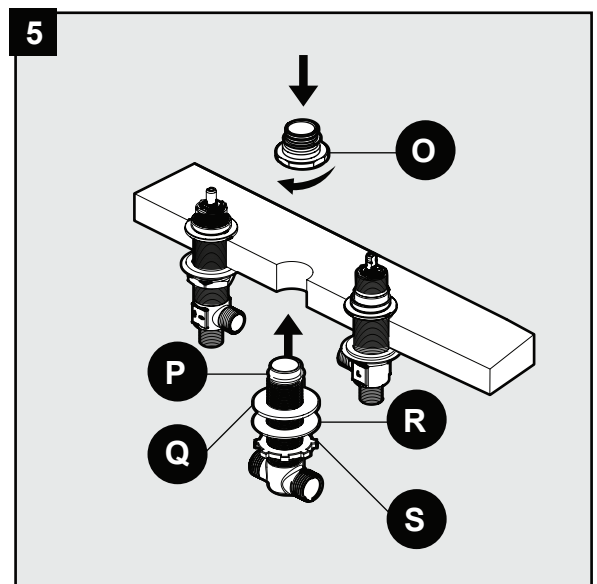
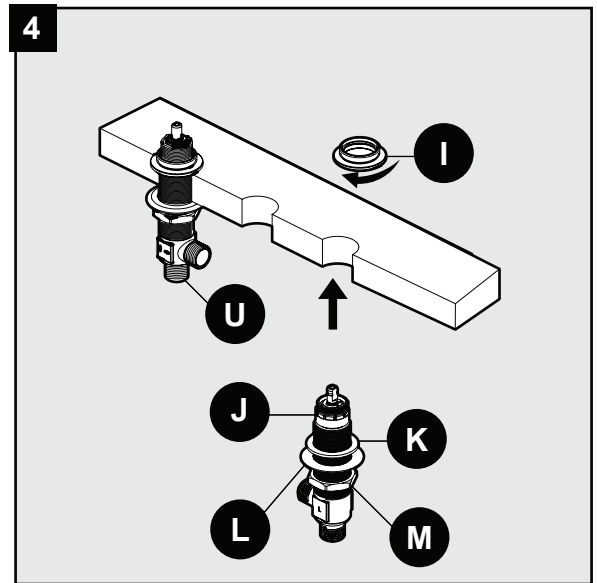
ASSEMBLY INSTRUCTIONS

4. Install the cold and hot end valves (J and U):
 - a. Remove the preassembled flange (I) from the top of the cold end valve (J).
 - b. From underneath the deck, insert the cold end valve (J) with the preassembled rubber washer (K), metal washer (L), and nut (M) through the hole on the right side.
 - c. From above, thread the flange (I) onto the stem of the cold end valve (J).
 - d. Tighten the nut (M) so that the flange (I) sits flush to the surface of working area.
 - e. Repeat these steps for the hot end valve (U).

Note: The hot end valve is labeled.

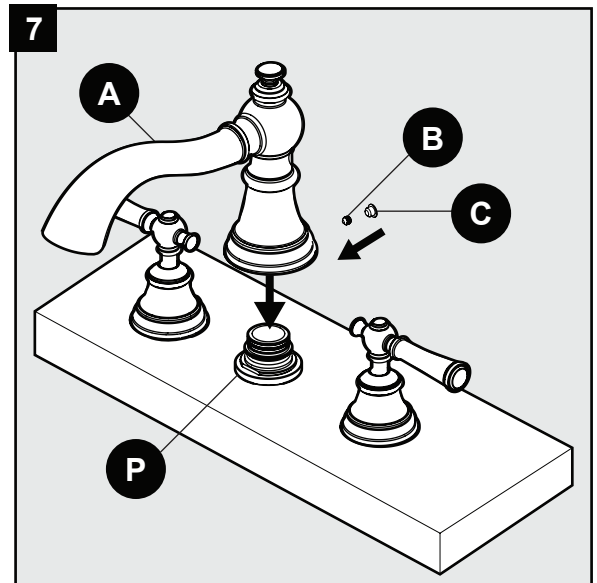
5. Install the middle body (P):
 - a. Remove the preassembled connector (O) from the middle body (P).
 - b. From underneath the sink, place the middle body (P) through the center hole in the deck.
 - c. Replace the connector (O) back on top of the middle body (P).
 - d. Securely tighten the nut (S) with a wrench.

6. Install the handles:
 - a. Place the handle bases (G) over the tops of the cold and hot end valves (J and U) and twist clockwise to secure.
 - b. Insert the handles (F) down through the handle bases (G). Ensure that each handle base is pointing away from the middle body (P).
 - c. Secure the handles (F) with handle screws (E) and tighten with a Phillips screwdriver.
 - d. Insert the handle caps (D) on top of the handle screws (E).

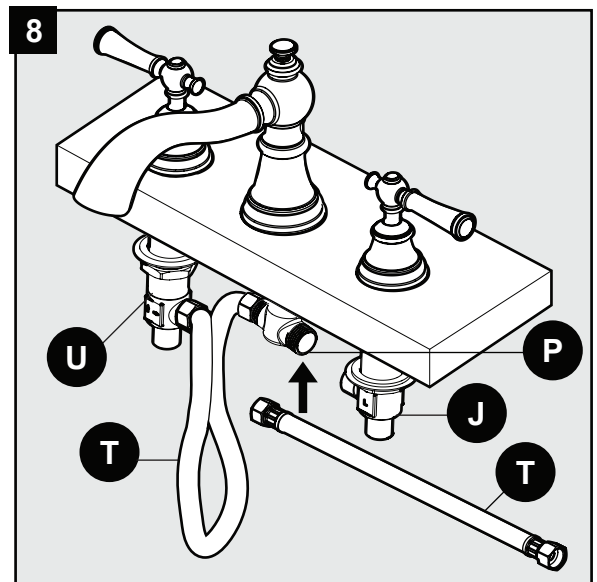


ASSEMBLY INSTRUCTIONS

7. Remove the preassembled screw (B) and cap (C) from the spout (A) and place the spout (A) onto the middle body (P). Then secure the spout (A) with the screw (B) and insert the cap (C).

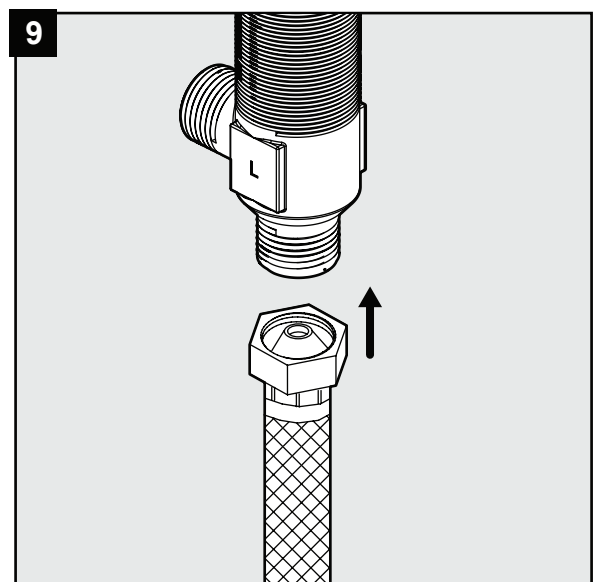


8. Connect one end of each hose (T) to the two connectors on the middle body (P) and the other end of the hoses (T) to the cold end valve (J) and hot end valve (U). Gently bend the hoses (T) to fit in the available space underneath the deck.



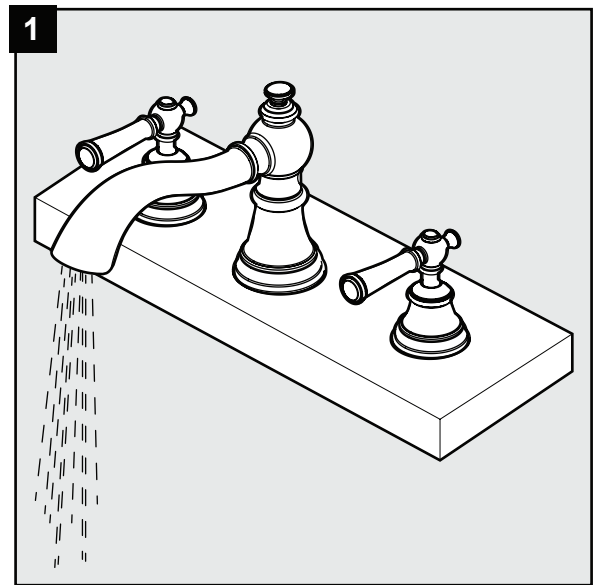
9. Connect a 1/2 in. IPS faucet connector (not included) to the water supplies underneath the sink using wrenches (not included).

Note: Refer to the local plumbing codes for permissible types of water supply connectors.



OPERATING INSTRUCTIONS

1. After the installation is complete:
 - a. Turn on the water supply and allow both hot and cold water to run for at least one minute each.
 - b. While the water is running, check for leaks.



CARE AND MAINTENANCE

- Clean carefully by gently wiping with a grit-free damp cloth.
- Use only mild soap with water.
- Never use acids, harsh chemicals, or abrasive detergents to clean the surface.

TROUBLESHOOTING

PROBLEM	POSSIBLE CAUSE	CORRECTIVE ACTION
There is a leak from under the handle.	The cartridge is damaged.	Remove the handle and replace the cartridge.
The spout has a leak.	The cartridge is damaged.	Remove the handle and replace the cartridge.

WARRANTY

This faucet has been manufactured under the highest standard of workmanship. All parts of this faucet are warranted to be free from leaks or drips during domestic use for as long as the original purchaser owns this product. **THIS EXCLUDES INDUSTRIAL, COMMERCIAL, OR BUSINESS USE.** The manufacturer will replace **FREE OF CHARGE**, under the warranty conditions the entire unit or any part (at our option) which proves defective in material and/or workmanship under normal installation, use, and service. This warranty is limited to defective parts as stated. All costs of removal and installation of the faucet, including the replacement of warranty parts are the responsibility of the purchaser. The manufacturer shall not be liable for incidental, consequential, or special damages arising at or in connection with product use or performance except as may otherwise be accorded by law. This warranty gives you specific legal rights, and you may also have other rights which may vary from state to state. Any damage to this faucet as a result of misuse, abuse, neglect, accident, improper installation, or any use violating instructions furnished by us, **WILL VOID THIS WARRANTY.** When requesting warranty service, you will need to present a copy of your sales receipt as proof of purchase. To obtain warranty service, call our customer service department at 1-866-417-7564.

REPLACEMENT PARTS LIST

For replacement parts, call our customer service department at 1-866-417-7564, 8 a.m. - 8 p.m., EST, Monday - Friday.

PART	DESCRIPTION	PART #
1	Index	RP10072*
2	Screw	RP50154
3	Handle	RP13276*
4	Washer	RP70150
5	Handle Seat	RP17143*
6	Bonnet	RP70397
7	Cartridge H	RP20013
8	Cartridge C	RP20014
9	Flange and Washer	RP70399
10	Rubber Washer	RP64023
11	Metal Washer	RP64024
12	Nut	RP56014
13	Hose	RP70042
14	Cap	RP80349*
15	Screw	RP50054
16	Rubber Washer	RP64035
17	Metal Washer	RP64036
18	Nut	RP56087
19	O-ring	RP60056

* Available in Chrome Finish and Oil Rubbed Bronze Finish.

