

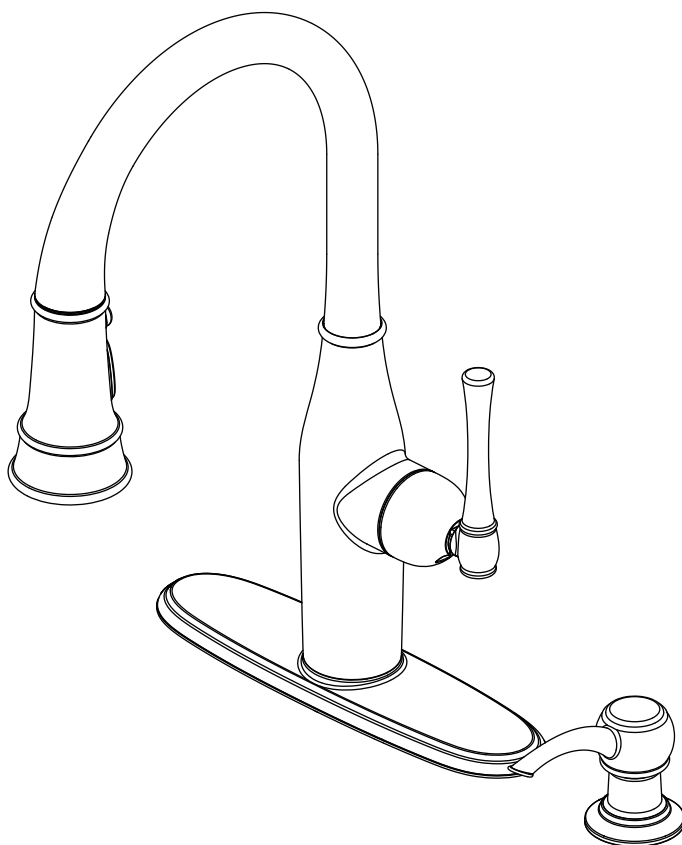


AquaSource® is a registered trademark of LF, LLC. All Rights Reserved.

ITEM #0017758
0016531

PULL-DOWN KITCHEN FAUCET

MODEL #67354-1008D2
67354-1027H2



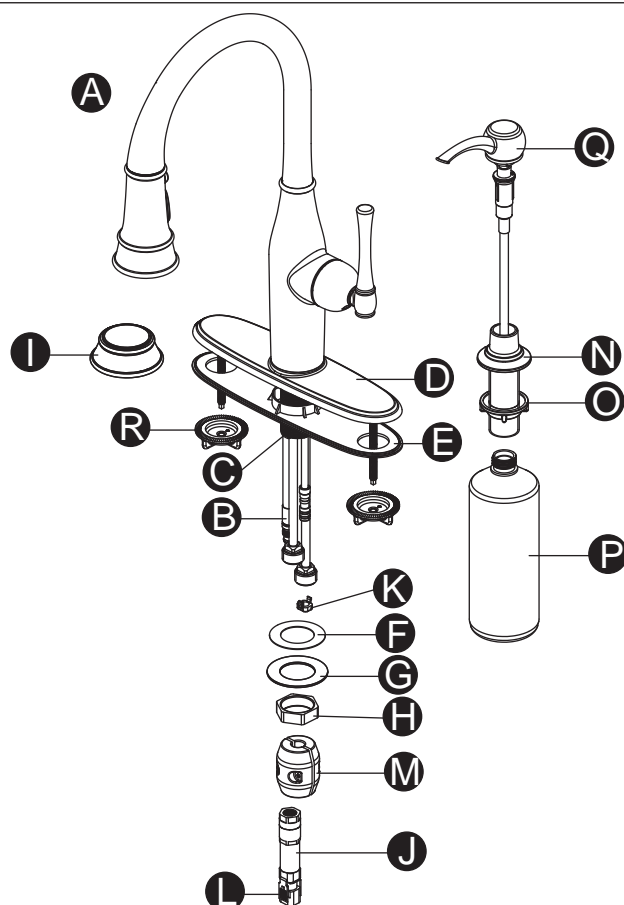
ATTACH YOUR RECEIPT HERE

Serial Number _____ **Purchase Date** _____



Questions, problems, missing parts? Before returning to your retailer, call our customer service department at 1-866-417-7564, 8 a.m. - 8 p.m., EST, Monday - Friday.

PACKAGE CONTENTS



PART	DESCRIPTION	QUANTITY
A	Faucet	1
B	Hose (Preassembled to Faucet (A))	1
C	Shank (Preassembled to Faucet (A))	1
D	Escutcheon (Preassembled to Faucet (A))	1
E	Base Plate (Preassembled to Faucet (A))	1
F	Rubber Washer (Preassembled to Shank (C))	1
G	Metal Washer (Preassembled to Shank (C))	1
H	Nut (Preassembled to Shank (C))	1
I	Flange	1
J	Quick Connector (Preassembled to Hose (B))	1
K	Block (Preassembled to Faucet (A))	1
L	Tab (Preassembled to Quick Connector (J))	1
M	Weight	1
N	Body Assembly	1
O	Mounting Nut (Preassembled to Body Assembly (N))	1
P	Bottle	1
Q	Pump	1
R	Mounting Nut (Preassembled to Faucet (A))	2

SAFTEY INFORMATION

Please read and understand this entire manual before attempting to assemble, operate or install the product. If you have any questions regarding the product, please call customer service at 1-866-417-7564, 8 a.m. - 8 p.m., EST, Monday - Friday.

- Follow the installation instructions carefully. Proper installation is the installer's responsibility.
- Failure to follow correct installation procedures can result in the faucet being loose, which can result in serious injury.
- Check local building codes before beginning installation to ensure compliance.

PREPARATION

Before beginning the assembly of product, make sure all parts are present. Compare parts with package content list and diagram above. If any part is missing or damaged, do not attempt to assemble the product. Contact customer service for replacement parts.

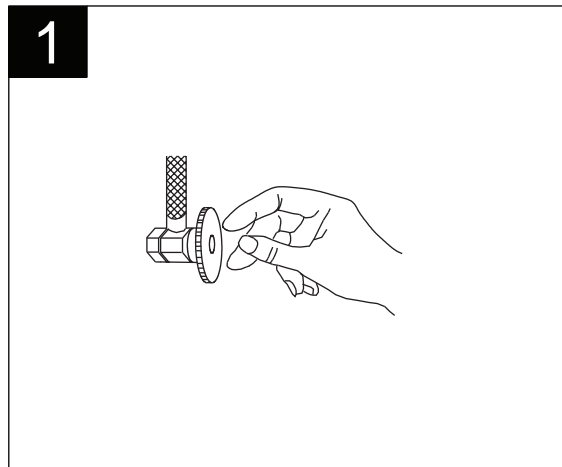
Estimated Assembly Time: 60 minutes, Including Removal of Old Faucet

Tools Required for Assembly (not included): Adjustable Wrench, Phillips Screwdriver, Pliers, Putty/Silicone, Allen Wrench

Helpful Tools (not included): Basin Wrench, Water Supply Lines

ASSEMBLY INSTRUCTIONS

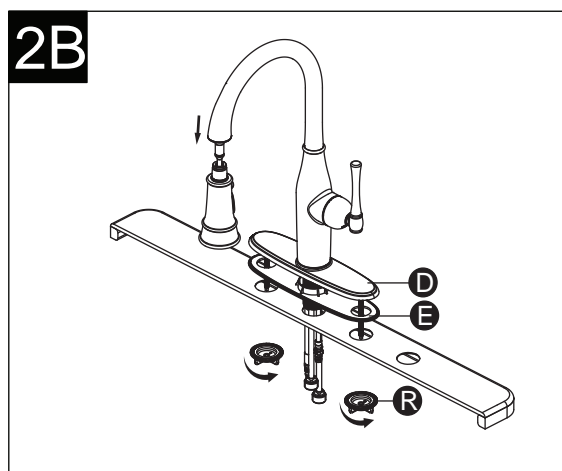
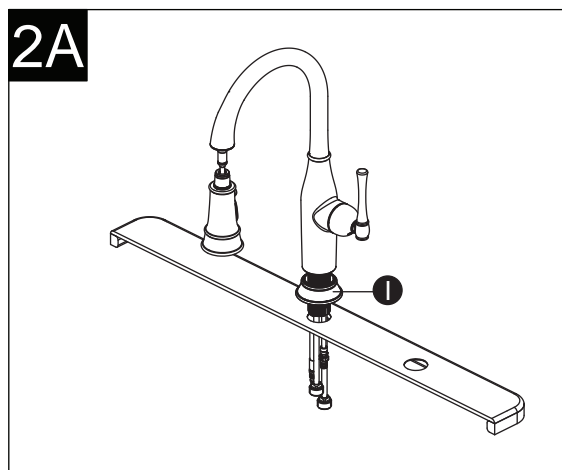
1. Shut off water supplies. Remove old faucet.



2. For single hole installation, refer to diagram 2A.
Place flange (I) on the sink (not included).

For 3 hole installation refer to diagram 2B. Place base plate (E) and escutcheon (D) on the sink. Do not use flange (I) if you are using the escutcheon for 3 Hole installation. From underneath the sink, hand tighten mounting nut (R).

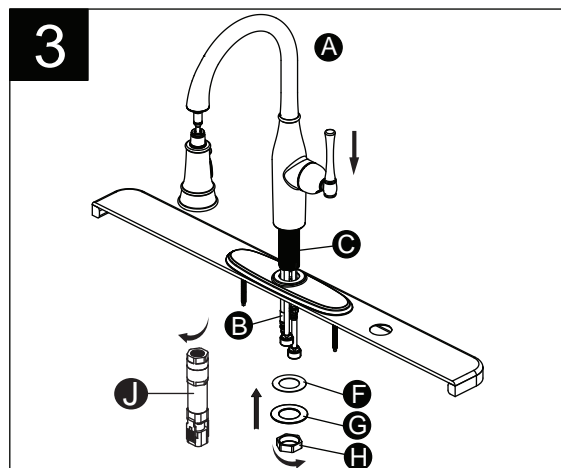
DO NOT USE THE FLANGE (I) IF YOU ARE USING THE ESCUTCHEON



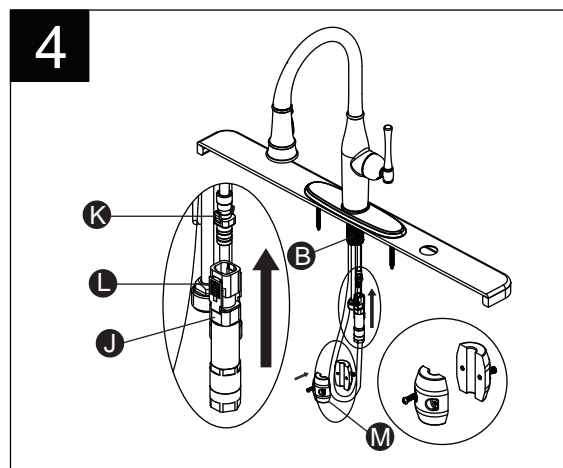
ASSEMBLY INSTRUCTIONS

3. Remove quick connector (J) from the hose (B) by unscrewing it counter clockwise. Retract hose (B) up through faucet (A), until the hose (B) fitting is flush with the bottom of shank (C). Do not pull fitting past the shank (C). Insert faucet (A) through holes in top of sink. From underneath sink, install rubber washer (F), metal washer (G) and nut (H) onto the mounting shank (C).

Note: Do not feed the hose (B) back down through the spout until step 4.

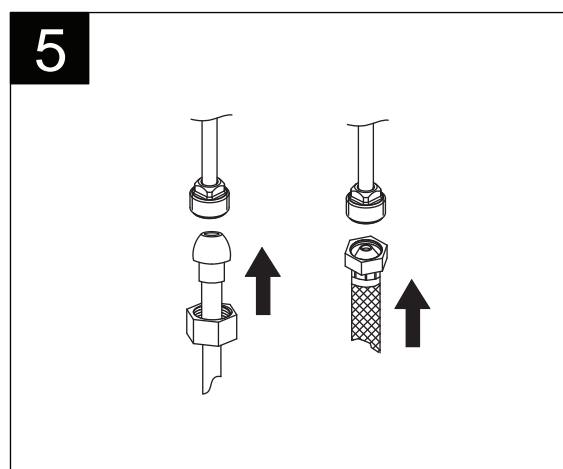


4. To install the hose (B), screw quick connector (J) to the free end of hose (B). Align block (K) and tab (L) on quick connector (J). Push quick connector (J) housing firmly upward and snap onto block (K). Pull down moderately to ensure connection has been made. If it is necessary to remove the hose, press on the tabs (L) and pull quick connects (J) down. After connecting the hose (B), attach weights (M) to hose (B) at bottom of loop to prevent hose (B) from twisting and return hose (B) to proper position.



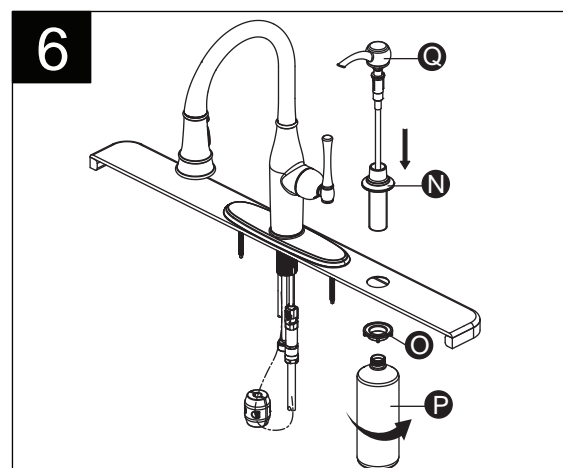
5. Connect 1/2 in. IPS faucet connector or coupling nuts (not included) with 3/8 in. O.D. ball-nose risers (not included) to water supplies using wrenches (not included).

Note: Refer to local plumbing codes for permissible types of water supply connectors.



ASSEMBLY INSTRUCTIONS

6. To install soap dispenser, insert body assembly (N) through selected hole of sink. Secure body assembly (N) to sink with mounting nut (O). From under the sink screw the bottle (P) onto the shank of body assembly (N). Insert pump (Q) down into the body assembly (N).



7. The installation is completed. Now remove the sprayer from the spray hose by unscrewing it in a counterclockwise direction and turn the water for at least one minute for each hot and cold. Check for leaks. Re-tighten any connections if necessary, but do not overtighten. Reinstall sprayer head by hand tightening it back onto the spray hose. Do not let go of the hose until you have reattached the sprayer.



CARE AND MAINTENANCE

- Clean carefully by gently wiping with a grit-free damp cloth. Use only mild soap with water.
Never use acids, harsh chemicals or abrasive detergents to clean surface.

TROUBLESHOOTING

If you have any questions regarding the product, please call our customer service at 1-866-417-7564, 8 a.m. - 8 p.m., EST, Monday - Friday.

PROBLEM	POSSIBLE CAUSE	CORRECTIVE ACTION
Leak from under handle	Damaged cartridge	Remove handle. Replace cartridge.
Inconsistent flow pattern	Aerator is dirty or misfitted	Unscrew the aerator to check rubber washer or replace the aerator.
Leak from the spout/aerator	Damaged cartridge	Remove handle. Replace cartridge.

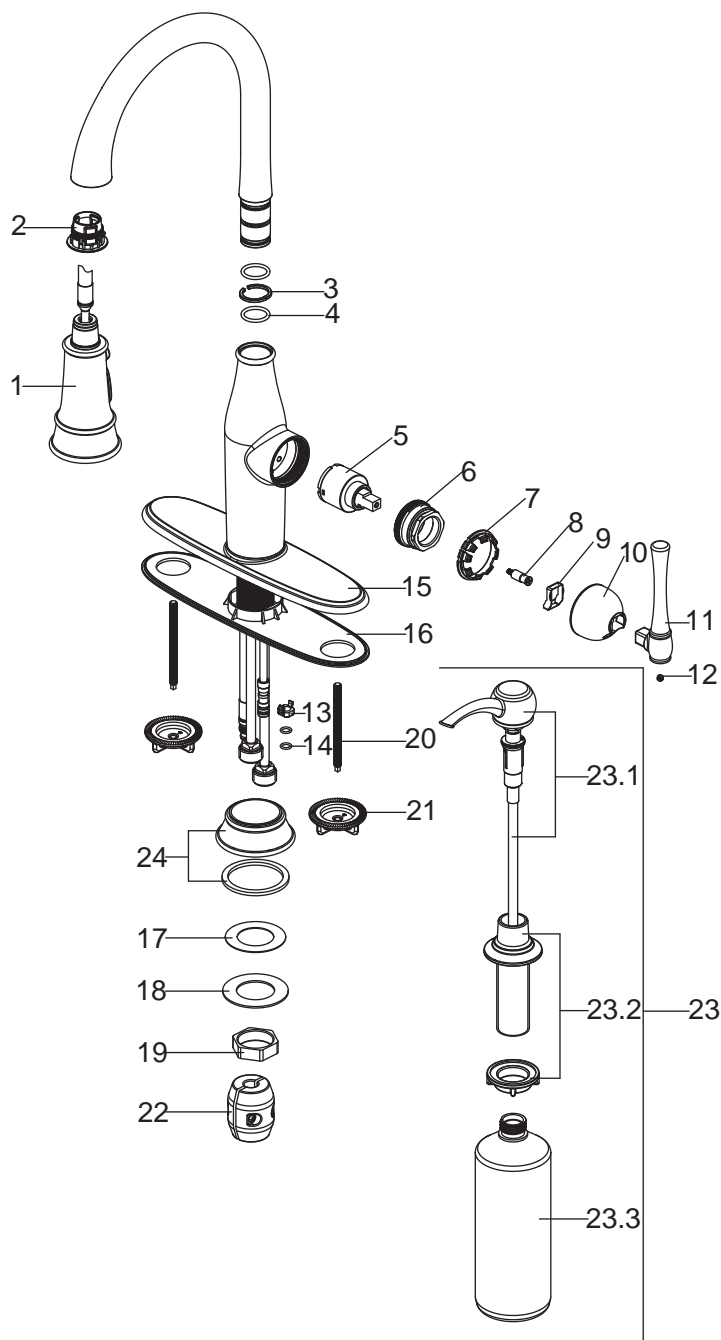
LIFETIME LIMITED WARRANTY

This faucet has been manufactured under the highest standard of workmanship. All parts of this faucet are warranted to be free from leaks or drips during domestic use for as long as the original purchaser owns this product. THIS EXCLUDES INDUSTRIAL, COMMERCIAL, OR BUSINESS USE. The manufacturer will replace FREE OF CHARGE, under the warranty conditions the entire unit or any part (at our option) which proves defective in material and/or workmanship under normal installation, use and service. This warranty is limited to defective parts as stated. All costs of removal and installation of the faucet, including the replacement of warranty parts are the responsibility of the purchaser. The manufacturer shall not be liable for incidental, consequential or special damages arising at or in connection with product use or performance except as may otherwise be accorded by law. This warranty gives you specific legal rights, and you may also have other rights which may vary from state to state. Any damage to this faucet as a result of misuse, abuse, neglect, accident, improper installation, or any use violating instructions furnished by us, WILL VOID THIS WARRANTY. When requesting warranty service, you will need to present a copy of your sales receipt as proof of purchase. To obtain warranty service, call our customer service department at 1-866-417-7564.

REPLACEMENT PARTS LIST

For replacement parts, call our customer service department at 1-866-417-7564, 8 a.m. - 8 p.m., EST, Monday - Friday.

PART	DESCRIPTION	PART #
1	Sprayer Assembly	RP38090*
2	Inverter	RP70288
3	Clip	RP60076
4	O-Ring	RP60075
5	Cartridge	RP20044
6	Bonnet	RP70289
7	Clip	RP70290
8	Connect	RP50125
9	Wearable Ring	RP70291
10	Handle Seat	RP17123*
11	Handle	RP13209*
12	Set Screw	RP50002
13	Block	RP70005
14	O-Ring	RP60002
15	Escutcheon	RP80274*
16	Base Plate	RP80275
17	Rubber Washer	RP64131
18	Metal Washer	RP64111
19	Nut	RP56063
20	Bolt	RP50071
21	Mounting Nut	RP56036
22	Weight	RP70223
23	Soap Dispenser	RP46039*
23.1	Pump	RP46040*
23.2	Body Assembly	RP46021*
23.3	Bottle	RP46002
24	Flange & Washer	RP80278*



*Available in Stainless Steel Finish and Oil Rubbed Bronze Finish.

Printed in China