



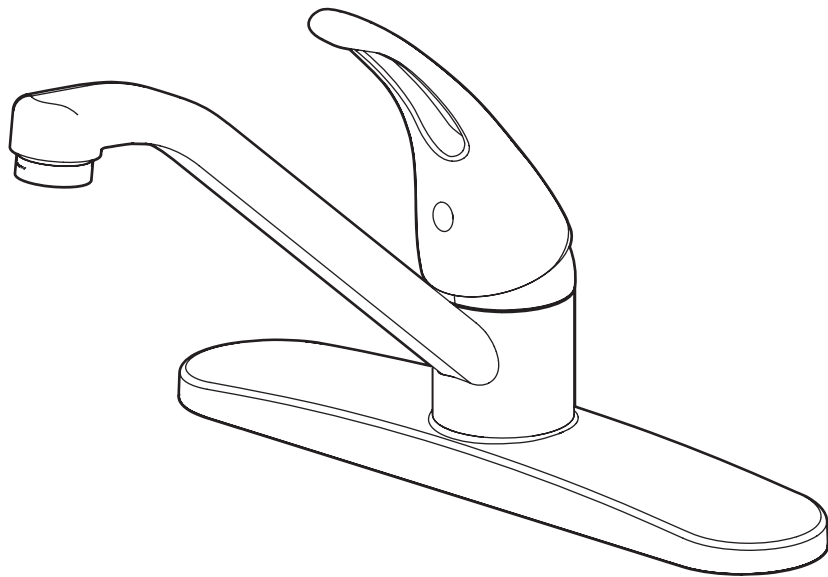
**PROJECT  
SOURCE.**<sup>TM</sup>

ITEM #0265633

# KITCHEN FAUCET

MODEL #67210-0201

Français / Español p. 8



**ATTACH YOUR RECEIPT HERE**

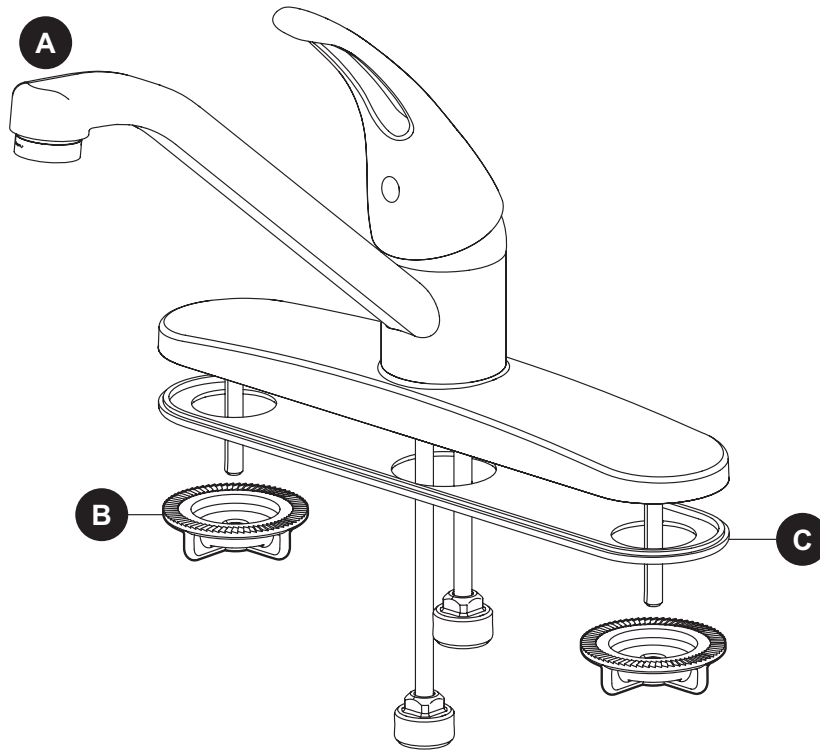
Serial Number \_\_\_\_\_ Purchase Date \_\_\_\_\_



**Questions, problems, missing parts?** Before returning to your retailer, call our customer service department at 1-866-389-8827, 8 a.m. - 8 p.m., EST, Monday - Friday.

## PACKAGE CONTENTS

---



PART	DESCRIPTION	QUANTITY
A	Faucet	1
B	Mounting Nut (Preassembled to Faucet (A))	2
C	Putty Plate	1



## SAFETY INFORMATION

---

Please read and understand this entire manual before attempting to assemble, operate, or install the product.

### WARNING

- Follow the installation instructions carefully. Proper installation is the installer's responsibility.
- Failure to follow correct installation procedures can result in the faucet being loose, which can result in serious injury.

### CAUTION

- Check local building codes before you begin installation to ensure compliance.

## PREPARATION

---

Before beginning the assembly of this product, make sure all parts are present. Compare parts with the package contents list. If any part is missing or damaged, do not attempt to assemble the product. Contact customer service for replacement parts.

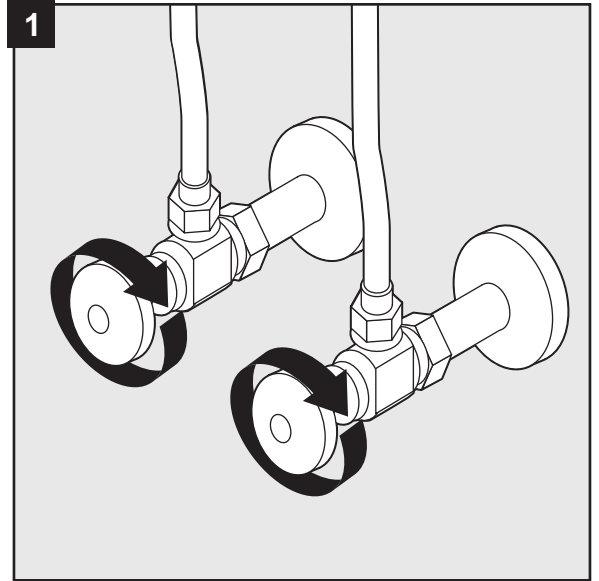
**Estimated Assembly Time:** 45 minutes (including removal of old faucet)

Tools Required for Assembly (not included): Adjustable Wrench, Phillips Screwdriver, Silicone Sealant, Allen Wrench

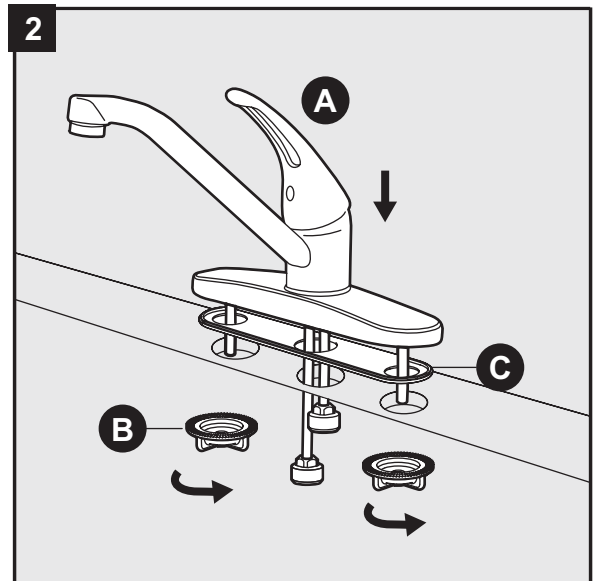
Helpful Tools (not included): Basin Wrench, Water Supply Lines

## ASSEMBLY INSTRUCTIONS

1. Shut off the water supply and remove the old faucet.

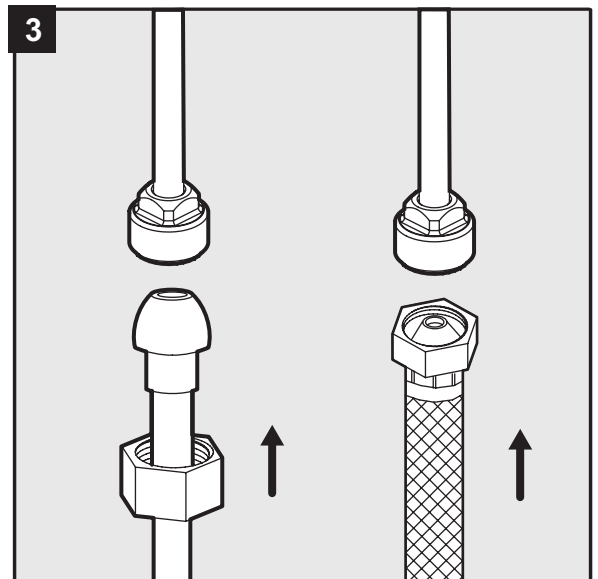


2. Install the faucet:
  - a. Remove the preassembled mounting nuts (B) from the faucet (A) and place the faucet (A) in position on the sink.
  - b. From under the sink, thread the mounting nuts (B) onto the faucet (A).
  - c. Tighten the mounting nuts (B).



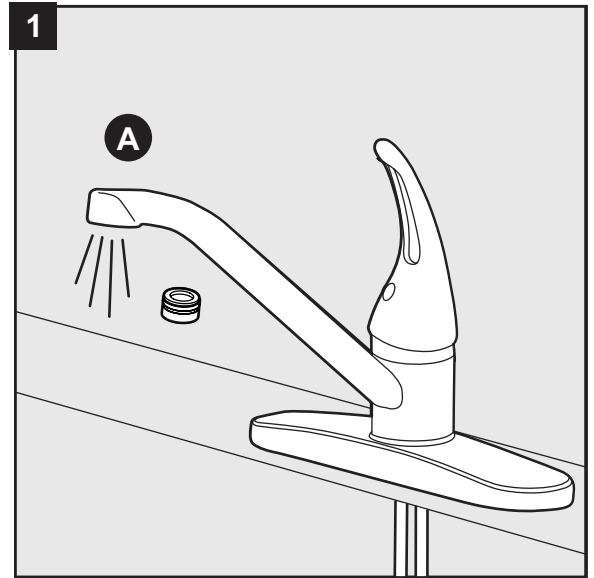
3. Connect a 1/2 in. IPS faucet connector or coupling nuts (not included) with 3/8 in. O.D. ball-nose risers (not included) to the water supplies underneath the sink using wrenches (not included).

**Note:** Refer to the local plumbing codes for permissible types of water supply connectors.



## OPERATION INSTRUCTIONS

1. After the installation is complete:
  - a. Remove the aerator on the faucet (A).
  - b. Turn on the water supply and allow both hot and cold water to run for at least one minute each.
  - c. While the water is running, check for leaks.
  - d. Replace the aerator.



## CARE AND MAINTENANCE

- Clean carefully by gently wiping with a grit-free damp cloth.
- Use only mild soap with water.
- Never use acids, harsh chemicals, or abrasive detergents to clean the faucet surface.

## TROUBLESHOOTING

PROBLEM	POSSIBLE CAUSE	CORRECTIVE ACTION
There is a leak under the handle.	The cartridge is damaged.	Remove the handle and replace the cartridge, seats and springs.
There is an inconsistent water-flow pattern.	The aerator is dirty or does not fit correctly on the faucet.	Unscrew the aerator and check the rubber washer or replace the aerator.
The spout/aerator has a leak.	The cartridge is damaged.	Remove the handle and replace the cartridge.

## WARRANTY

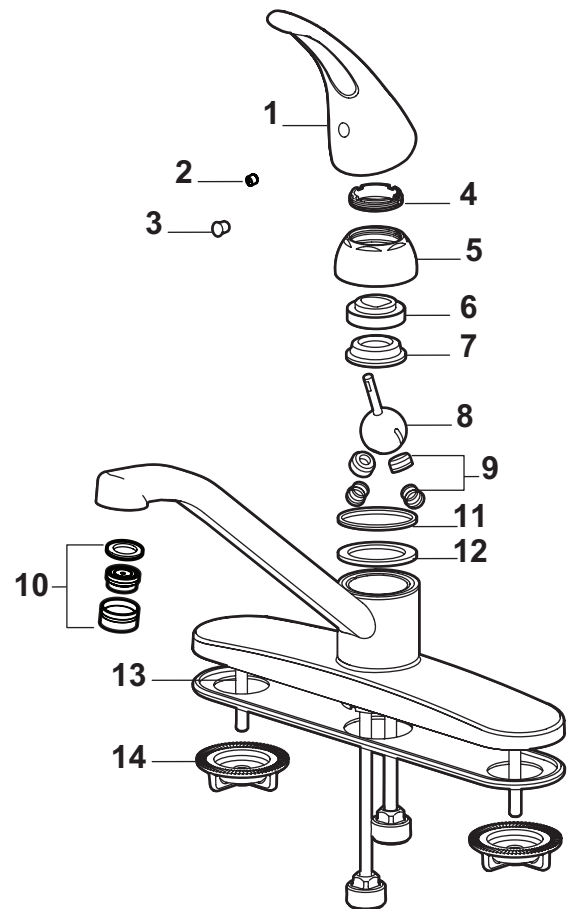
This faucet has been manufactured under the highest standard of workmanship. All parts of this faucet are warranted to be free from leaks or drips during domestic use for as long as the original purchaser owns this product. THIS EXCLUDES INDUSTRIAL, COMMERCIAL, OR BUSINESS USE. The manufacturer will replace FREE OF CHARGE, under the warranty conditions the entire unit or any part (at our option) which proves defective in material and/or workmanship under normal installation, use and service. This warranty is limited to defective parts as stated. All costs of removal and installation of the faucet, including the replacement of warranty parts are the responsibility of the purchaser. The manufacturer shall not be liable for incidental, consequential or special damages arising at or in connection with product use or performance except as may otherwise be accorded by law. This warranty gives you specific legal rights, and you may also have other rights which may vary from state to state. Any damage to this faucet as a result of misuse, abuse, neglect, accident, improper installation, or any use violating instructions furnished by us, WILL VOID THIS WARRANTY. When requesting warranty service, you will need to present a copy of your sales receipt as proof of purchase. To obtain warranty service, call our customer service department at 1-866-389-8827.

## REPLACEMENT PARTS LIST

For replacement parts, call our customer service department at 1-866-389-8827, 8 a.m. - 8 p.m., EST, Monday - Friday.

PART	DESCRIPTION	QUANTITY
1	Handle	RP13186*
2	Set Screw	RP50113
3	Index Bonnet	RP10006
4	Adjustable Ring	RP70371
5	Cap	RP80330*
6	Cam	RP70334
7	Cam Packing	RP70108
8	Cartridge	RP22007
9	Disc and Spring	RP22008
10	Aerator	RP30004*
11	Washer	RP64070
12	O-Ring	RP60032
13	Bolt	RP50040
14	Mounting Nut	RP56036

\* Available in Polished Chrome Finish.



Printed in China