



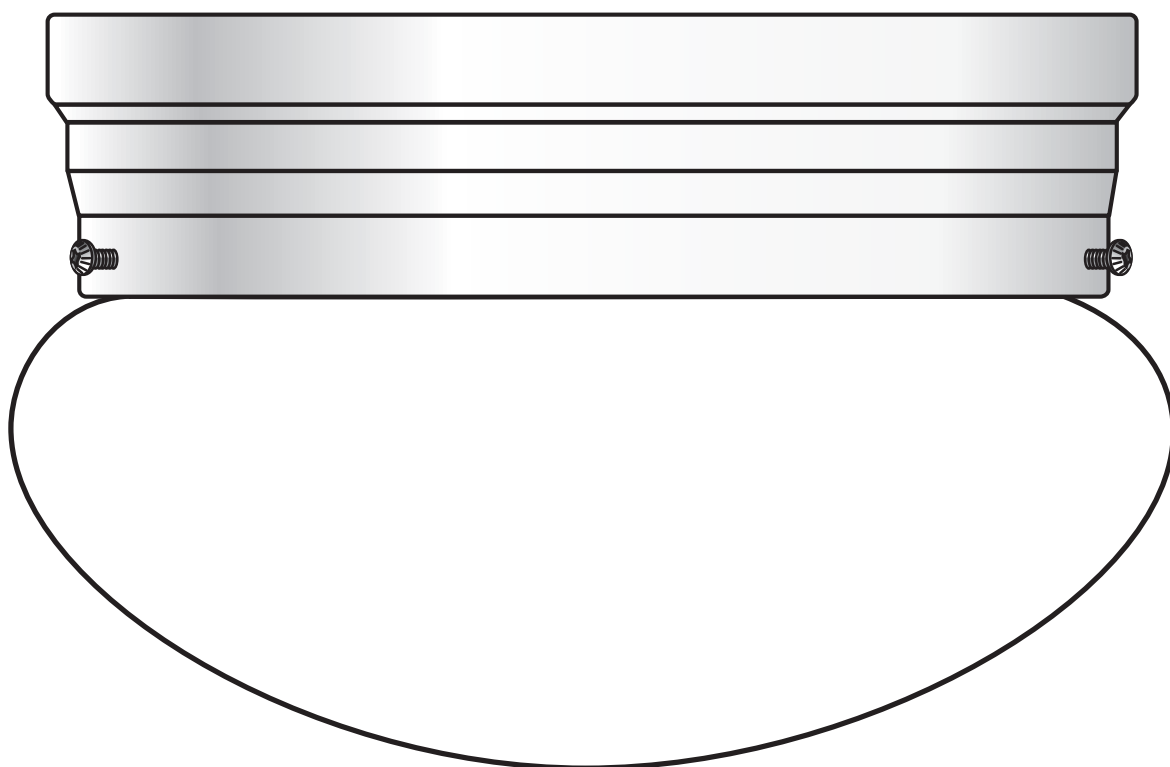
Portfolio™ is a registered trademark of LF, LLC. All Rights Reserved.

# FLUORESCENT CEILING FIXTURE

MODEL #GL2301-WHES-I, GL2301-NKES-I

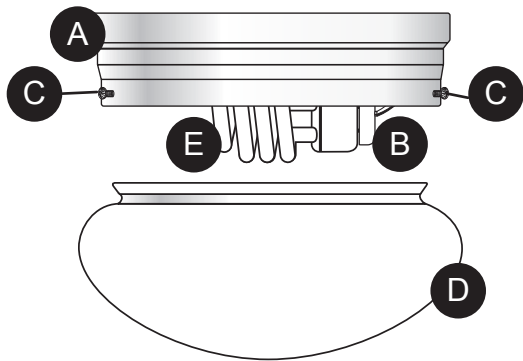
Français p. 7

Español p. 13



**Questions, problems, missing parts?** Contact the customer service department at 1-800-643-0067, 8 a.m. - 6 p.m., EST, Monday - Thursday, 8 a.m. - 5 p.m., EST, Friday.

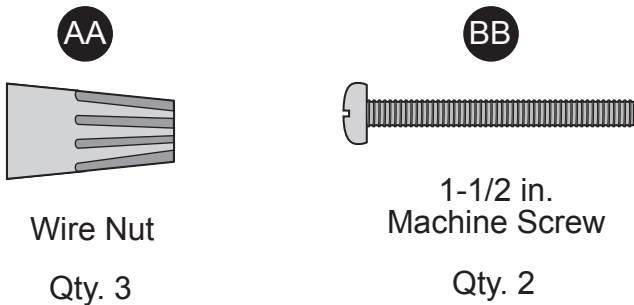
PACKAGE CONTENTS



Part	Description	Quantity
A	Fixture Pan	1
B	Bulb Socket	1
C	Diffuser Thumb Screw (preassembled to Fixture Pan (A))	1

Part	Description	Quantity
D	Diffuser	1
E	Bulb	1

HARDWARE CONTENTS



⚠️ WARNINGS AND CAUTIONS

- WARNING**
- Shut off power at the circuit breaker or fuse panel before removing the old fixture or installing the new one.
- CAUTION**
- **DO NOT USE THIS FIXTURE WITH A DIMMING CIRCUIT.** If you presently have dimmer controls, you will need to remove them and replace them with regular electrical switches. If you have a three-way dimmer, you will have to replace it with a regular three-way switch. If you are unfamiliar with electrical installations, it is recommended you have a qualified electrician do your installation.

**LAMP CONTAINS MERCURY**  
Manage in accordance with Spills, Disposal and Site Cleanup Requirements

[www.lamprecycle.org](http://www.lamprecycle.org) or 1-866-326-BULB  
[www.epa.gov/mercury/spills/index.htm#fluorescent](http://www.epa.gov/mercury/spills/index.htm#fluorescent)

PREPARATION

Before beginning assembly of product, make sure all parts are present. Compare parts with package contents list and diagram above. If any part is missing or damaged, do not attempt to assemble the product. Contact customer service for replacement parts.

Estimated Assembly Time: 30 minutes


Tools Required for Assembly: Phillips head screwdriver, flathead screwdriver, safety glasses, electrical tape, pliers, wire cutters, wire strippers, step ladder (not included).

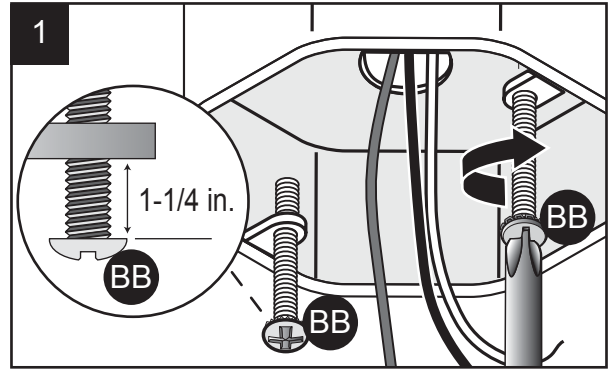
## ASSEMBLY INSTRUCTIONS

With power disconnected to your electrical box, remove the old fixture. If your old fixture is attached to an electrical box having more than two (2) wire leads, we suggest you use tape and markings to keep track of which wires were attached to each other.

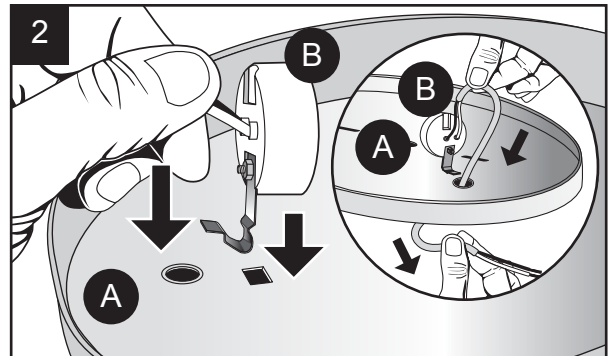
1. Screw 1-1/2 in. machine screws (BB) into the electrical box until there is about 1-1/4 in. between the ceiling and the underside of the screw head (Fig. 1).

### Hardware Used

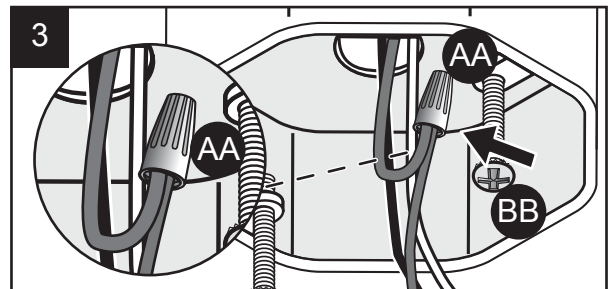
BB	1-1/2 in.		x 2
	Machine Screw		



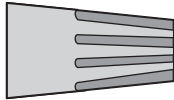

2. To install the bulb socket (B), snap the metal socket clip into the rectangular hole until you feel it lock into place. Tug on the bulb socket (B) to make sure it is properly locked onto the pan (A) (Fig. 2). Feed the bulb socket (B) wires through the circular wire opening to the backside of the fixture pan (A).



3. For safety and proper operation, the fixture must be properly grounded (Fig. 3). A green, or bare copper ground wire is preassembled to the fixture pan (A). If the electrical box is made of plastic, and has a green or bare copper grounding wire inside, the fixture ground wire must be spliced to the green ground wire in the electrical box using one of the wire nuts (AA). If the electrical box is metal, and does not have a visible ground wire, you can assume that the metal electrical box and metal conduit is already grounded at or near the circuit breaker panel. The fixture pan (A) will be grounded via the 1-1/2 in. machine screws (BB). If you are unsure if the electrical box is properly grounded, or unfamiliar with the methods of properly grounding the fixture, consult a qualified electrician.

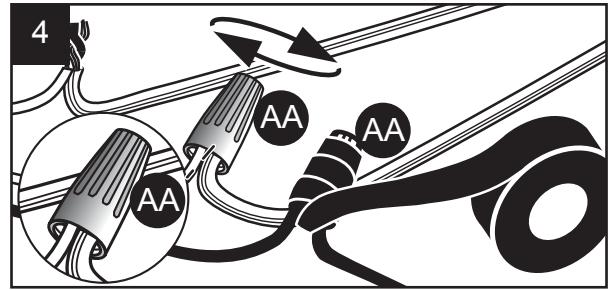


### Hardware Used

AA	Wire Nut		x 1
BB	1-1/2 in.		x 2
	Machine Screw		

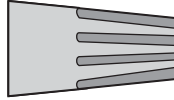
## ASSEMBLY INSTRUCTIONS

4. Connect the supply leads from the electrical box to the fixture wire leads using the wire nuts (AA) (Fig. 4). The **black** lead from the fixture pan (A) is spliced to the **black** supply lead, and the **white** lead from the fixture pan (A) is spliced to the **white** supply lead. Make sure the wire nuts (AA) are tight. You can wrap electrical tape around the wire nuts (AA) to prevent them from coming loose. Carefully push the spliced wires back into the electrical box.



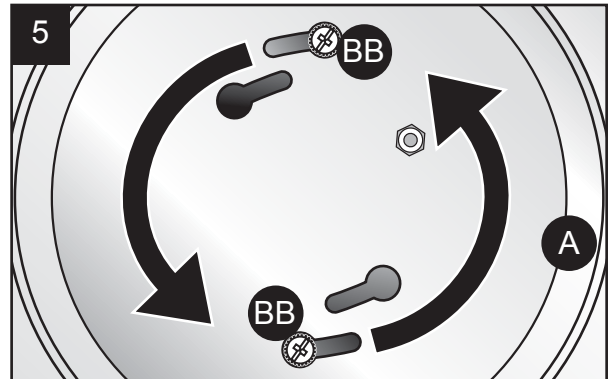
### Hardware Used

AA Wire Nut

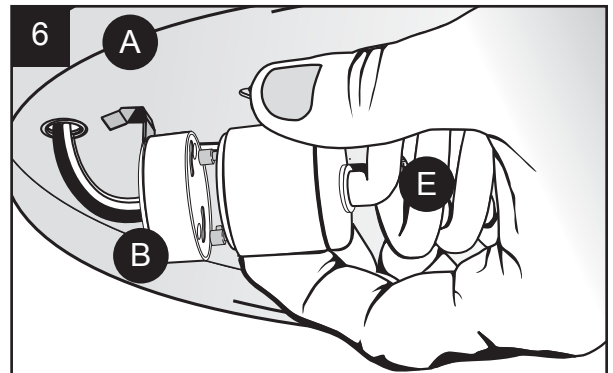


x 2

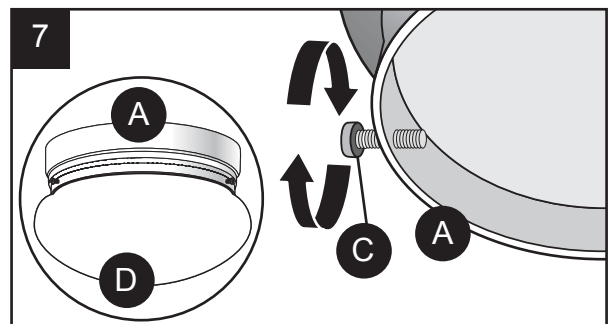
5. Position the fixture pan (A) over the electrical box so that the 1-1/2 in. machine screws (BB) you installed in Step 1 pass through the round openings of the keyhole slots in the back of the fixture pan (A). When both 1-1/2 in. machine screws (BB) are through the keyholes, twist the fixture pan (A) until the 1-1/2 in. machine screw (BB) bodies are engaged in the narrower end of the keyhole slot (Fig. 5). Hold the fixture pan (A) in place, and tighten the 1-1/2 in. machine screws (BB).



6. Grasp the bulb (E) by the plastic base, and align the pins on the bulb (E) with the bulb socket (B) (Fig. 6). Rotate it clockwise approximately 1/4 turn until the bulb (E) base is secure in the bulb socket (B).



7. Back out all the preassembled diffuser thumb screws (C) out about 3/8 in. to allow room to insert the diffuser (D) in the fixture pan (A) (Fig. 7). Push the diffuser (D) up, hold and tighten each of the diffuser thumb screws (C) until the diffuser (D) is securely attached to the fixture pan (A) (Fig. 9). Be careful not to drop the diffuser (D) while tightening the diffuser thumb screws (D). NOTE: Tighten all 3 diffuser thumb screws (C) as equally as possible or the diffuser (D) may be mounted off center.



Restore power to the electrical box to make sure your fixture is working properly.

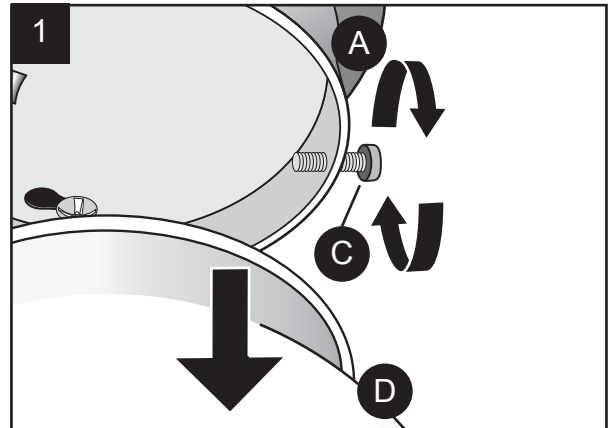
## BULB REPLACEMENT INSTRUCTIONS

---

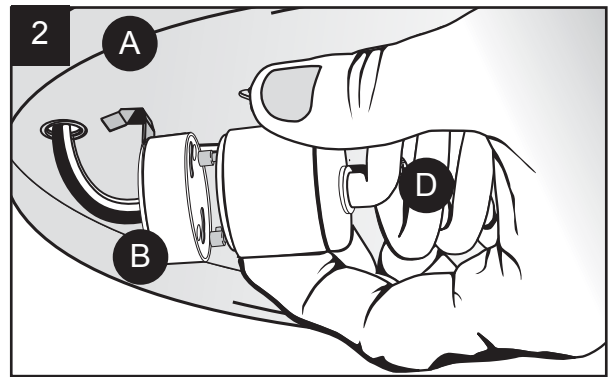
This fixture uses one (1) GU24 23W self-ballasted fluorescent bulb. These bulbs are readily available at your local home center, and most larger hardware stores.

Before replacing bulb (E), shut off power to the fixture at the circuit breaker, or fuse panel. Allow sufficient time for fixture and lamp to cool.

1. While holding the diffuser (D) in the palm of your hand(s), rotate each diffuser thumb screw (C) clockwise until the diffuser (D) is sufficiently loosened from the fixture pan (A) (Fig. 1). Be careful not to drop the diffuser (D) as it comes loose from the pan (A).



2. Remove the bulb (E) by grasping it by the plastic base and unscrewing it from the bulb socket (B) 1/4 turn in counterclockwise direction (Fig. 2).



3. Replace with a GU24 23W self-ballasted fluorescent bulb. Install the new bulb in the same manner you removed the old bulb. Put the diffuser (D) back onto the pan (A), and twist lock it in place. Restore power to the fixture.

4. Dispose of the old bulb(s) in accordance to local, state, and/or federal laws, or go to [www.lamprecycle.org](http://www.lamprecycle.org) for more information.

## CARE AND MAINTENANCE

---

You may want to periodically clean the fixture using a mild, non-abrasive glass cleaner and soft cloth. Do **NOT** use solvents or cleaners containing abrasive agents. When cleaning the fixture, make sure you have the power turned off and do not spray liquid cleaner directly onto the bulb, socket, ballast, or wiring.

**TROUBLESHOOTING**

Minor problems often can be fixed without the help of an electrician. Before doing any work on the fixture, shut off power supply at the circuit breaker panel to avoid electrical shock.

Problem	Possible Cause	Corrective Action
Fixture doesn't light.	1. Power is off. 2. Bad wire connection. 3. Defective bulb(s). 4. Defective wall switch.	1. Check circuit breaker or wall switch. 2. Check wire splices. 3. Replace bulb(s). 4. Replace switch.
Circuit breaker trips when light is turned on.	1. Crossed wires or power wire is grounded out.	1. Check wiring connections.

**THREE-YEAR WARRANTY**

The manufacturer warrants this lighting fixture to be free from defects in materials and workmanship for a period of (3) years from the date of original purchase by the consumer. We will repair or replace (at our option) the unit in the original color, and style if available, or in a similar color and style if the original item has been discontinued, without charge. The manufacturer warrants the lamp for 3 years, providing the lamp is not used in a commercial application where it is on 24 hours per day, but is used in a residential environment for 3-5 hours per day. Defective units must be properly packed and returned to the manufacturer with a letter of explanation and your original purchase receipt showing date of purchase. Call 1-800-643-0067 to obtain a Return Authorization number and an address where to ship your defective product. Note: No C.O.D. shipments will be accepted. The liability of the manufacturer is in any case limited to replacement of the defective light fixture product. The manufacturer will not be liable for any other loss, damage, or injury which is caused by the product. This limitation upon the liability of the manufacturer includes any loss, damage, or injury which is (I) to person or property or otherwise; (II) incidental or consequential in nature; (III) based upon theories of warranty, contract, negligence, strict liability, tort, or otherwise; or (IV) directly, or indirectly related to the sale, use, or repair of the product. This warranty gives you specific rights, and you may also have other rights which vary from state to state.

**REPLACEMENT PARTS LIST**

In the event that you are missing a part or have questions regarding installation, please call the customer service department at 1-800-643-0067, 8 a.m. - 6 p.m., EST, Monday - Thursday, 8 a.m. - 5 p.m., EST, Friday.

Part	Description	Part #
D	Diffuser	D2301
AA	Wire Nut	HDW2301
BB	1-1/2 in. Machine Screw	HDW2301

