



ITEM #0333554, #0333553

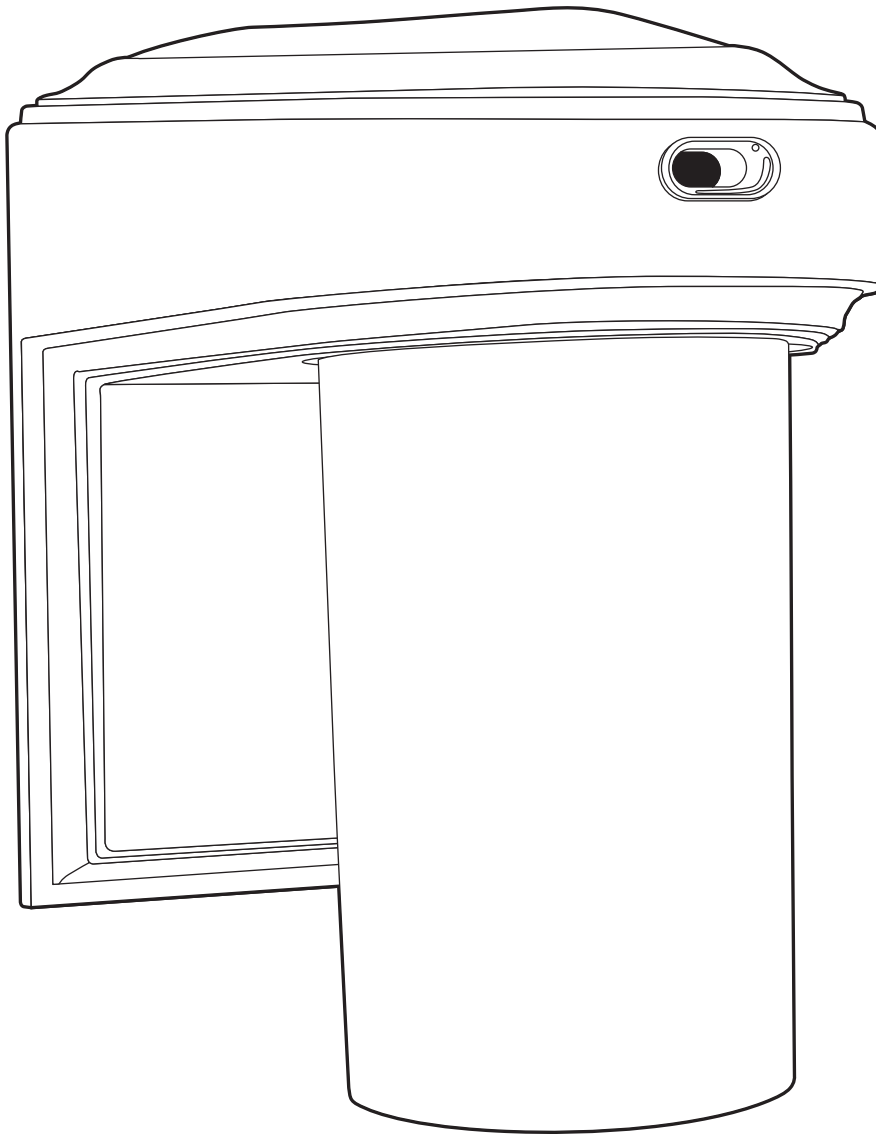
DUSK-TO-DAWN LIGHT

MODEL #GU8813-BZ-I, #GU8813-WH-I

Utilitech & UT Design® and Grounded in Quality® are registered trademarks of LF, LLC. All Rights Reserved.

Français p. 7

Español p. 13



ATTACH YOUR RECEIPT HERE

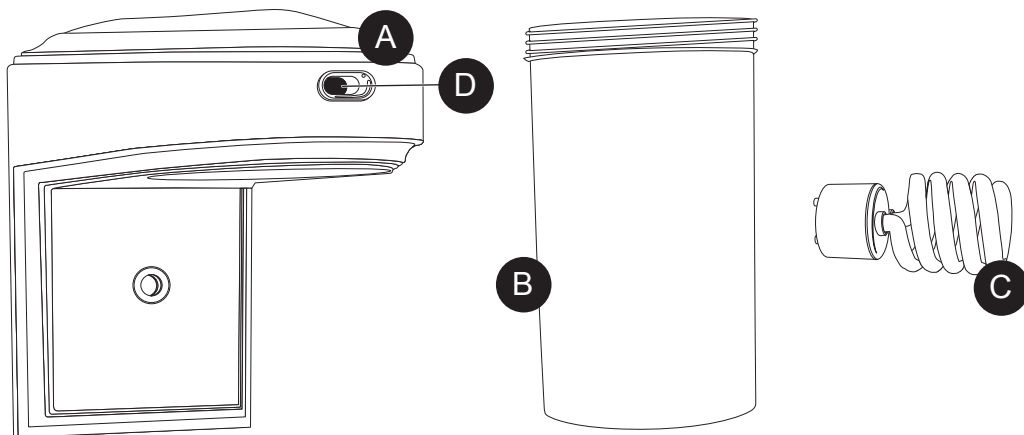
Serial Number: _____ Purchase Date: _____



Questions, problems, missing parts? Contact the customer service department at 1-866-994-4148, 8 a.m. - 6 p.m., EST, Monday - Thursday, 8 a.m. - 5 p.m., EST, Friday.



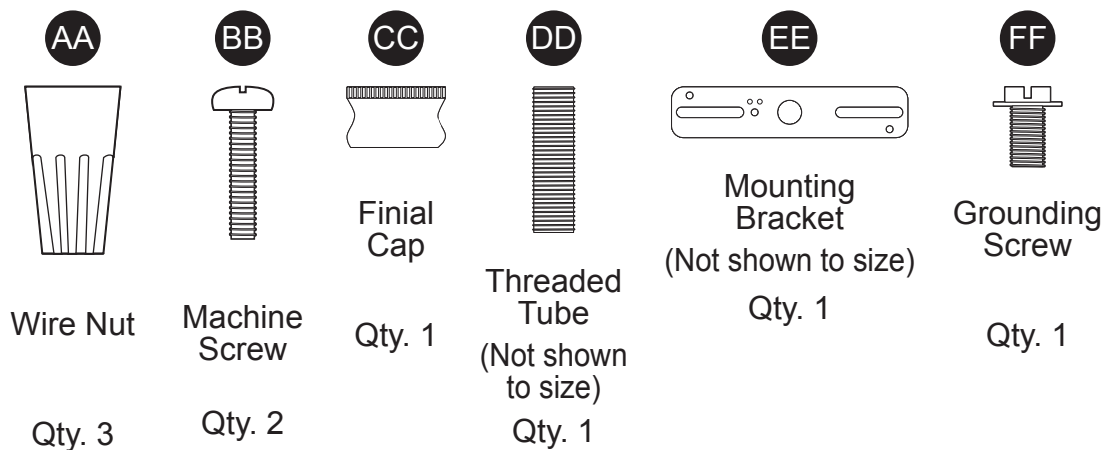
PACKAGE CONTENTS



PART	DESCRIPTION	QUANTITY
A	Fixture	1
B	Diffuser	1

PART	DESCRIPTION	QUANTITY
C	Bulb	1
D	Dusk-to-Dawn Sensor	1

HARDWARE CONTENTS (shown actual size)



Wire Nut

Machine
Screw

Qty. 1

Threaded
Tube
(Not shown
to size)
Qty. 1

Mounting
Bracket
(Not shown to size)
Qty. 1

Grounding
Screw
Qty. 1

Qty. 3

Qty. 2

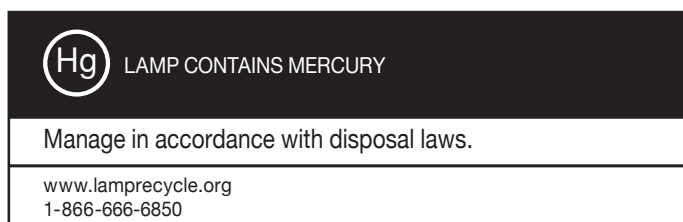
SAFETY INFORMATION

WARNING

- Shut off power at the circuit breaker or fuse panel before removing the old fixture or installing the new one.

CAUTION

- **DO NOT USE THIS FIXTURE WITH A DIMMING CIRCUIT.** If you presently have dimmer controls, you will need to remove them, and replace them with regular electrical switches. If you have a three-way dimmer, you will have to replace it with a regular three-way switch. If you are unfamiliar with electrical installations, it is recommended you have a qualified electrician do your installation.



PREPARATION

Before beginning assembly of product, make sure all parts are present. Compare parts with package contents list and diagram above. If any part is missing or damaged, do not attempt to assemble the product. Contact customer service for replacement parts.

PREPARATION

Estimated Assembly Time: 45 minutes


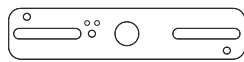
Tools Required for Assembly (not included): Flathead Screwdriver, Safety Glasses, Electrical Tape
Phillips head Screwdriver, Wire Cutters, Pliers, Wire Strippers, Step Ladder, Level.

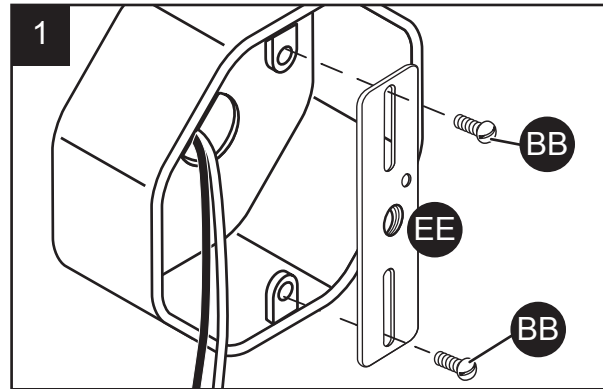
ASSEMBLY INSTRUCTIONS

With power disconnected to your electrical box, remove the old fixture. If your old fixture is attached to an electrical box having more than two (2) wire leads, it is recommended you use tape and markings to keep track of which wires were attached to each other.

1. Position the elongated holes in the mounting bracket (EE) over the electrical box ears and attach the mounting bracket (EE) onto the electrical box using either the original screws from the electrical box or the machine screws (BB) (Fig. 1). NOTE: The included mounting bracket (EE) may be slightly different. The mounting bracket (EE) may mount vertically, diagonally or horizontal.


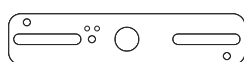
Hardware Used

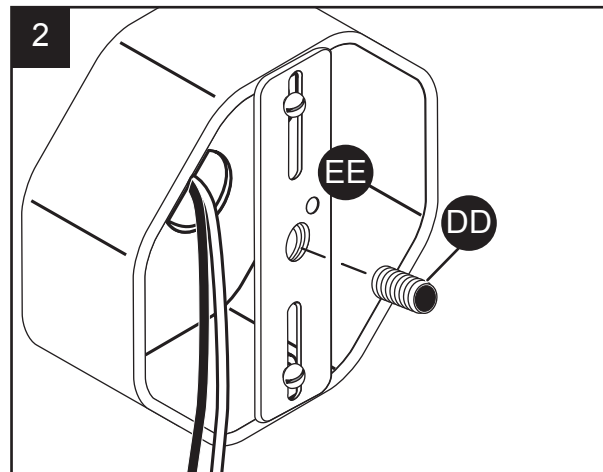
BB	Machine Screw		x 2
EE	Mounting Bracket		x 1



2. Screw the threaded tube (DD) into the center hole of the mounting bracket (EE), leaving approximately 1/2 in. of the threaded tube (DD) protruding beyond the front surface of the mounting bracket (EE) (Fig. 2).

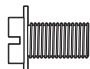
Hardware Used

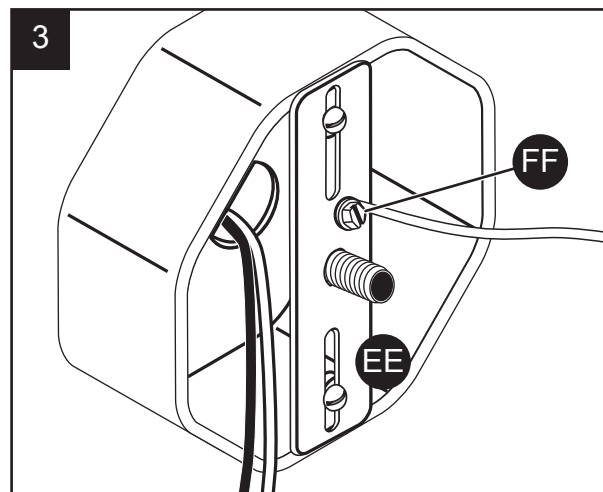
DD	Threaded Tube		x 1
EE	Mounting Bracket		x 1



3. For safety and proper operation, your fixture must be properly grounded (Fig. 3). If you are unfamiliar with the methods of properly grounding your fixture, consult a qualified electrician. A copper ground wire is pre-attached to your fixture pan (A). If your electrical box is made of plastic and/or has a green or bare copper grounding wire inside, the fixture grounding wire and the electrical box ground wire should be connected together using one of the wire nuts (AA). If your electrical box is made of metal and is already grounded, secure the bare end of the fixture ground wire to the mounting bracket (EE) using the ground screw (FF) on the mounting bracket (EE).

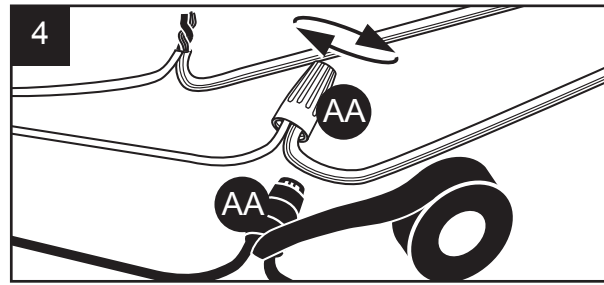
Hardware Used

FF	Grounding Screw		x 1
-----------	-----------------	---	-----



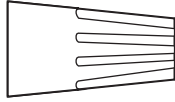
ASSEMBLY INSTRUCTIONS

4. Connect the supply leads from the electrical box to the fixture wire leads using the wire nuts (AA) (Fig. 4). The **black** lead from the fixture pan (A) is spliced to the **black** supply lead, and the **white** lead from the fixture pan (A) is spliced to the **white** supply lead. Make sure the wire nuts (AA) are tight. You can wrap electrical tape around the wire nuts (AA) to prevent them from coming loose. Carefully push the spliced wires back into the electrical box.

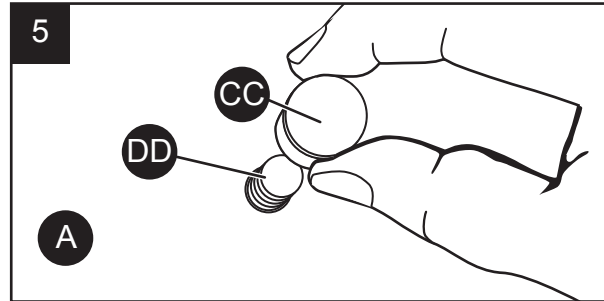


Hardware Used

AA Wire Nut x 2

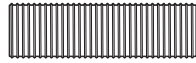


5. Position the fixture pan (A) over the electrical box so that the threaded tube (DD) protruding from the mounting bracket (EE) passes through the hole in the back of the fixture pan (A). Secure the fixture pan (A) to the electrical box with the finial cap (CC) (Fig. 5). Make sure the fixture pan (A) is level. The fixture pan (A) should be tight up against the wall surface.



Hardware Used

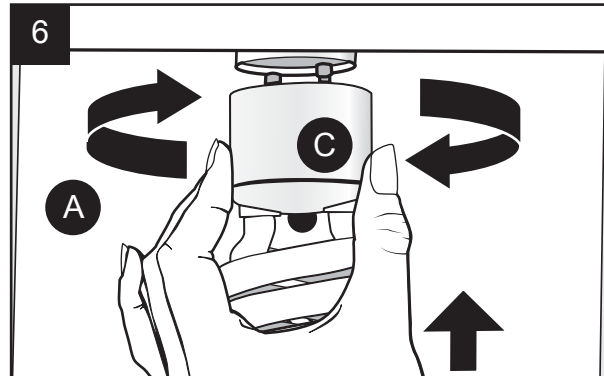
DD Threaded Tube x 1



CC Finial Cap x 1

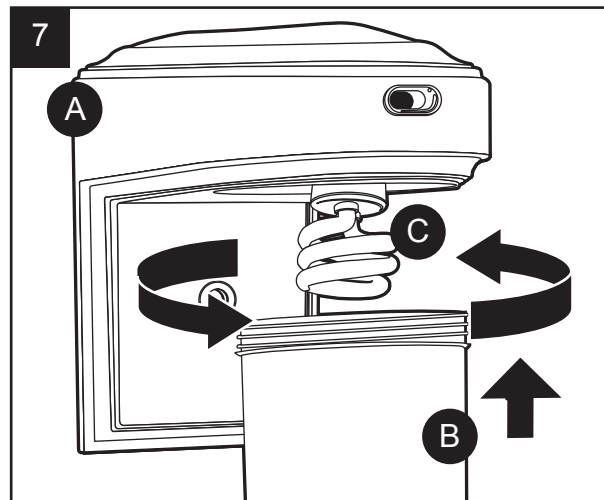


6. Grasp the bulb (C) by the plastic base, and align the pins on the bulb (C) with the socket (Fig. 6). Rotate the bulb (C) clockwise approximately $\frac{1}{4}$ turn until the bulb (C) base is secure in the socket.



7. Push the diffuser up, apply sufficient pressure to it and rotate it clockwise until it screws in securely to the pan (Fig. 7).

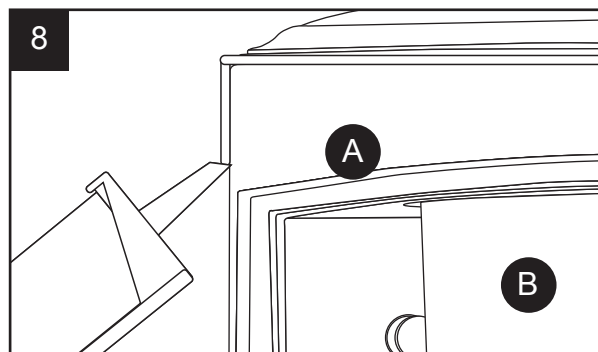
Restore power to the electrical box to make sure your fixture is working properly.



ASSEMBLY INSTRUCTIONS

8. In the event of outdoor installation, you will need to use silicon or other waterproof caulk around the outer perimeter of the fixture (A) pan to prevent water seeping into the wiring compartment (Fig. 8).

This fixture (A) is equipped with a dusk-to-dawn sensor (D). In order to test the fixture (A) during daylight hours, the electrical switch to the lantern must be turned ON, and the lens of the photo sensor (D) must be covered using an opaque material to block the light. Since the dusk-to-dawn sensor (D) controls the ON/OFF cycle of the fixture (A), the wall switch controlling the fixture (A) must be left ON at all times.



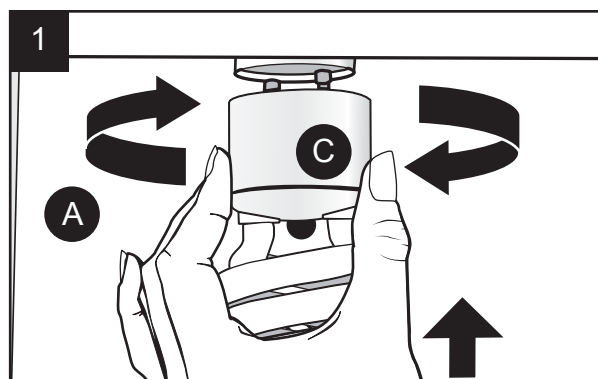
BULB REPLACEMENT INSTRUCTIONS

This fixture uses one (1) GU24 CFL13W self-ballasted fluorescent bulb. These bulbs are readily available at your local home center, and most larger hardware stores.

Before replacing bulb (C), shut off power to the fixture at the circuit breaker or fuse panel. Allow sufficient time for fixture and lamp to cool.

1. While holding the diffuser (B) in the palm of your hand(s), rotate it counterclockwise until it unscrews from the fixture (A).
2. Remove the defective bulb by grasping it by the plastic base and unscrewing it from the bulb socket 1/4 turn in counterclockwise direction (Fig. 1).

3. Install the new bulb in the same manner you removed the old bulb. Reattach the diffuser (B) following the same instructions in Step 2, except screw the diffuser (B) onto the fixture (A) in a clockwise direction. Make sure the diffuser is fully attached onto the fixture (A) before releasing your hands. Restore power to the fixture (A).



4. Dispose of the old lamp(s) in accordance with local, state, and/or federal laws, or go to www.lamprecycle.org for more information.

CARE AND MAINTENANCE

You may want to periodically clean the fixture using a mild, non-abrasive glass cleaner and soft cloth. Do NOT use solvents or cleaners containing abrasive agents. When cleaning the fixture, make sure you have the power turned off and do not spray liquid cleaner directly onto the bulb, socket, ballast, or wiring.

TROUBLESHOOTING

Minor problems often can be fixed without the help of an electrician. Before doing any work on the fixture, shut off power supply at the circuit breaker panel to avoid electrical shock.

PROBLEM	POSSIBLE CAUSE	CORRECTIVE ACTION
Fixture doesn't light.	<ol style="list-style-type: none"> 1. Power is off. 2. Bad wire connection. 3. Defective bulb(s). 4. Defective wall switch. 	<ol style="list-style-type: none"> 1. Check circuit breaker or wall switch. 2. Check wire splices. 3. Replace bulb(s). 4. Replace switch.
Circuit breaker trips when light is turned on.	<ol style="list-style-type: none"> 1. Crossed wires or power wire is grounded out. 	<ol style="list-style-type: none"> 1. Check wiring connections.

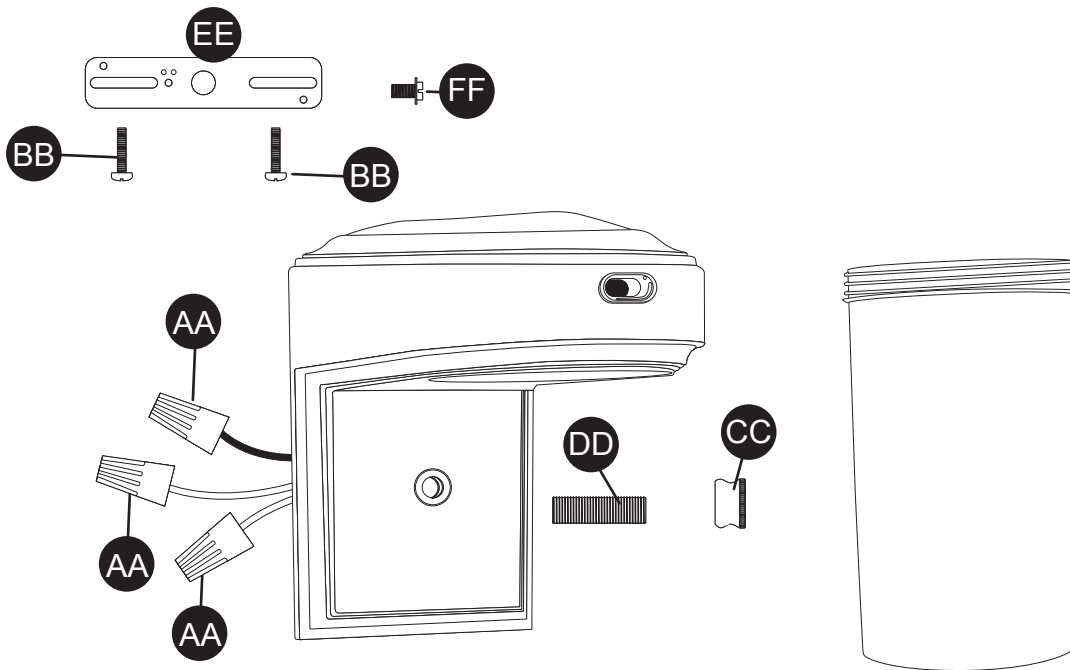
WARRANTY

The manufacturer warrants this lighting fixture to be free from defects in materials and workmanship for a period of (3) years from the date of original purchase by the consumer. We will repair or replace (at our option) the unit in the original color and style if available, or in a similar color and style if the original item has been discontinued, without charge. The manufacturer warrants the lamp for 3 years, providing the lamp is not used in a commercial application where it is on 24 hours per day, but is used in a residential environment for 3 - 5 hours per day. Defective units must be properly packed and returned to the manufacturer with a letter of explanation and your original purchase receipt showing date of purchase. **Call 1-866-994-4148** to obtain a return authorization number and an address where to ship your defective product. Note: No C.O.D. shipments will be accepted. The liability of the manufacturer is in any case limited to replacement of the defective light fixture product. The manufacturer will not be liable for any other loss, damage, or injury which is caused by the product. This limitation upon the liability of the manufacturer includes any loss, damage, or injury which is (I) to person or property or otherwise; (II) incidental or consequential in nature; (III) based upon theories of warranty, contract, negligence, strict liability, tort, or otherwise; or (IV) directly, or indirectly related to the sale, use, or repair of the product. This warranty gives you specific rights, and you may also have other rights which vary from state to state.

REPLACEMENT PARTS LIST

For replacement parts, call our customer service department at 1-866-994-4148, 8 a.m. - 6 p.m., EST, Monday - Thursday, 8 a.m. - 5 p.m., EST, Friday.

PART	DESCRIPTION	PART #
AA	Wire Nut	HDW8813
BB	Machine Screw	HDW8813
CC	Finial Cap	HDW8813
DD	Threaded Tube	HDW8813
EE	Mounting Bracket	HDW8813
FF	Green Ground Screw	HDW8813



Printed in China

Utilitech & UT Design® and Grounded in Quality® are registered trademarks of LF, LLC. All Rights Reserved.