



## Installation Guide

### PROPER SURFACE PREPARATION IS ESSENTIAL FOR A SUCCESSFUL PROJECT

*Failure to follow recommended surface preparation instructions may void the warranty. ACP, LLC is not responsible or liable for any labor costs or damaged product incurred as a result of improper installation. All product defects are covered under our 5-year limited warranty.*

**Read this installation manual in its entirety before you start. If you have doubts about doing this installation, you should contact a qualified contractor, carpenter or professional installer.**

#### Tools and supplies needed:

- Protective eyewear or safety goggles
- Measuring tape
- Straightedge or Speed Square®
- Pencil
- Tin snips
- Wood chisel (with hammer)
- File
- Soft cloth
- Chalk line
- Level (2' to 4')
- Caulk gun and adhesive (if using method 2)

*Due to the natural variance of real stone, we cannot guarantee an exact color or texture match from lot to lot. Prior to adhering Aspect tiles to your wall, please unpackage & lay out all purchased product to ensure color and texture consistency. If you encounter unreasonable variation, please give us a call at 1-800-434-3750 (7am-4:30pm CST, M-F) so that we may assist you with your project.*

#### If cutting tiles with a power saw:

- Protective eyewear or safety goggles
- Dust mask or respirator
- Safety gloves
- Wet tile saw or chop saw (for straight cuts only)
- Carbide blade

*We recommend a dust mask or respirator be used when cutting the stone tiles with a power saw as stone dust could cause irritation if inhaled.*

#### Before you begin

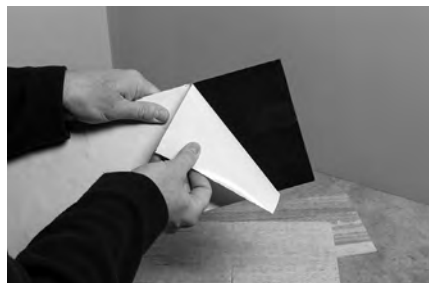
Installing Aspect peel & stick stone tiles is a simple, exciting project that adds instant style to your kitchen or bath. We have deliberately over-explained the tile installation. Have fun with this project. It's going to be easy and look great!

#### Installations Methods

**Method 1:** The adhesive on the back side of the Aspect stone tiles is engineered to stick to flat, primed, smooth walls.

Allow the tiles and substrate to come to room temperature (65 to 100 degrees F.) before installation. Use a heat gun or other source to warm the tiles and substrate if necessary.

If you are using installation Method 1, proper wall preparation is required. Aspect can be installed over most structurally sound substrates if they are clean, flat, smooth, dry, and free of dust, wax, soap scum and grease. Acceptable substrates are drywall, plaster or clean, smooth tile (glazed, porcelain type tile; not porous or textured). Any damaged, loose or uneven areas must be repaired, patched, leveled and primed. Fill cracks and irregularities with wallboard compound or spackling, then sand smooth with fine-grade sandpaper.



*Method 1 - The adhesive on the back side of the Aspect tiles is engineered to be aggressive and pressure-sensitive*

The substrate to which you are applying Aspect tiles must be primed with a fresh coat of latex or oil-based primer such as Zinsser® or KILZ®. Ingredients in “paint & primer in one” products can cause adhesion failure; as such, be sure to use a stand-alone primer. See below for Method 2 if you prefer not to prime the surface.

Occasionally, even after properly preparing the substrate, the surface can still have bows, high spots, ridges, or uneven areas. Place a level against the wall. If there is a 1/8” gap or greater, use a filler such as spackling or drywall compound to fill in imperfections.

**Method 2:** If you do not intend to prepare, sand and prime the surface, an additional adhesive should be used. We recommend a high-quality polyurethane construction adhesive be applied to the back of each tile in these cases. Be sure to remove the release film on the back of each tile before applying additional adhesive. Apply some small pea-sized dots of adhesive to the back of a full tile (see right). Keep the adhesive a half-inch from the edges. Firmly press the tiles into place. If adhesive squeezes out around the tiles, be sure to wipe it off before it dries.



*Method 2 - Using high-quality polyurethane construction adhesive*

## Recommended Adhesives

<u>Brand</u>	<u>Type</u>
Loctite®	PL Premium®
Loctite®	PL Premium Advanced®
LePage®	PL Premium®

## Layout

Measure the first area to be covered by Aspect material. We recommend you lay out the entire project on a flat surface, like the counter top, a table or the floor, before adhering to the substrate, to be sure you have enough tiles and your design and layout is correct. This will also give you good reference as to how the tiles will look on your wall.

As each project is different, be sure to plan for cutouts, corners or edge treatments before applying tiles.

One popular layout method is to begin from the inside corner of your counter and work across left to right. This method allows you to use two points of reference, your vertical wall and horizontal counter top. *Note* — when using these two points of reference, be sure to check them for level on the horizontal plane and 90° on the vertical plane. This will prevent any problems as you build your backsplash.

Lay a 4' level on top of your counter top or backsplash return lip if you have one. If the counter is level, use it as your reference. If not, identify the high point(s) of the counter top. Draw a horizontal line using your level and snap a reference line to indicate the high point. Snap a reference line to indicate the top of the first row of tiles. The top edge of the first row will be installed along this line. Use a level or measuring tape to mark the vertical termination point of your installation.

## Installing your first tile

Here's where the fun begins. Be sure the substrate is clean and dry. Remove the adhesive liner from the back of the matted tile. Align the tile where you want it on the reference lines.



Mark horizontal and vertical reference points



*Do not bend tiles backward as it could permanently stretch and misshape the tile matting.*

**Lightly place the tile onto the wall using your reference lines. Do not apply pressure to the tile until you are sure of your placement.**



The aggressive design of the adhesive does not allow for repositioning after pressing firmly. If it is in the right position, firmly apply even pressure across the entire tile.

When applying subsequent tiles, first "dry fit" the tiles with the adhesive liner in place to ensure proper fit. Dry fit tile against the wall exactly where it will be placed. Place each section as if placing a puzzle piece.

*Lightly place the tile onto the wall*



*Place each section as if placing a puzzle piece*



*Do not apply pressure until you are sure of your placement*

**Lightly place subsequent tiles on the wall using your reference lines. Do not apply pressure to the tile until you are sure of your placement.**

## Cutting Tiles

---

If cutting tiles is necessary, use one of our recommended tools and methods listed above. A snip is the recommended cutting method. Alternative cutting methods include a wet saw or chop saw for any necessary straight cuts. Use a combination of a snip and chisel for cutting notches out for various cutouts needed, such as an electrical outlet.

Measure where the cut must be made and cut the tile. Take the cut tile to the work space and place it in its intended location, ensuring it fits properly. Cut and install all remaining tiles using the same steps described above. When tiles are installed to your satisfaction, press each again firmly with your hand. This will ensure that the adhesive bonds to the substrate.



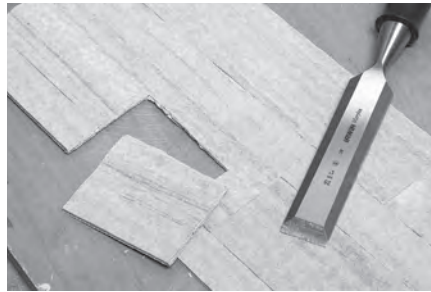
*Cutting a straight cut with a snip*



*Starting a notch using a snip*



*Cutting the inside edge with chisel*



*Finished notch cutout*

### Cutting option



*Wet tile saw can be a cutting option for straight cuts*

### Deburring cut tiles

If desired, use a metal file to debur the cut edges.



*Proper position for squaring up an edge or smoothing a rough spot*



*Do not file the edge at an angle*

### Adhering small pieces

Use tube adhesive for small cut pieces of Aspect stone that are less than a third of a full tile.

### Removing tiles

If a tile needs to be removed, apply heat with a hair dryer to soften the adhesive. Use a putty knife on the back side and slowly apply outward pressure to release the tile from the wall. The adhesive is engineered to not be removed so caution should be taken to not damage the wall. Any removed tiles may be unusable. ACP is not responsible or liable if you damage your walls. If the adhesive is destroyed but the tile face is fine, you can try using PL Premium® adhesive to reapply the tile.

### Care after Installation

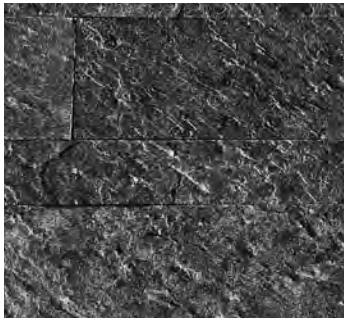
*As with ALL natural stone products, there is some inherent risk of staining, scratching or other problems as a result of material and/or environmental variables.*

### Sealing Options

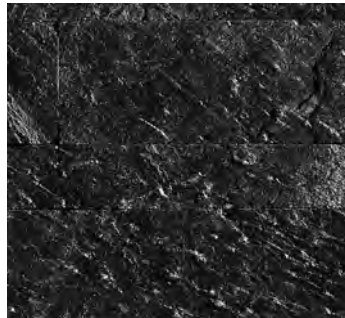
Using stone sealers or impregnators is not required. They will provide some protection from staining, but can alter the appearance of our stone tiles. See images below.

Impregnators, such as Miracle Sealants® 511 Impregnator, retain the natural appearance as much as possible, offering moderate stain protection. Follow manufacturer's directions.

Sealers/Enhancers, such as Miracle Sealants® 1-Step Natural Stone Sealer and Color Enhancer, slightly darkens color, looks wet, has a gloss finish and provides the best stain protection. Follow manufacturer's directions.



Stone with impregnator



Stone with sealer

### Cleaning

Wash the tiles as needed using a mild liquid dish detergent mixed with warm water. A soft brush may help remove debris. Rinse the stone tiles with clean water, and dry with a soft cloth to prevent water spots. If you need a more aggressive cleaner, use a stone cleaner available at any home center. Do not use cleaners that contain lemon or vinegar, as these ingredients can cause etching.

### Spalling

Aspect stone tiles will naturally flake. For 2-3 months after installation, small pieces may flake off the tiles. This is called "spalling," and is a natural process that occurs as the stone tiles acclimate to a new environment. Lightly sweep the flakes from the surface to help release any chips. The spalling will stop once the stone tiles have settled.

### Scratch removal

If the stone tiles get scratched, the mark can be disguised by applying mineral oil to the scratch and the surrounding area of tile. Clean the slate with a mild detergent and dry it thoroughly. Use a soft cloth to apply the mineral oil, rubbing it into the scratch area until it disappears.

A59-95 (04.14.16)