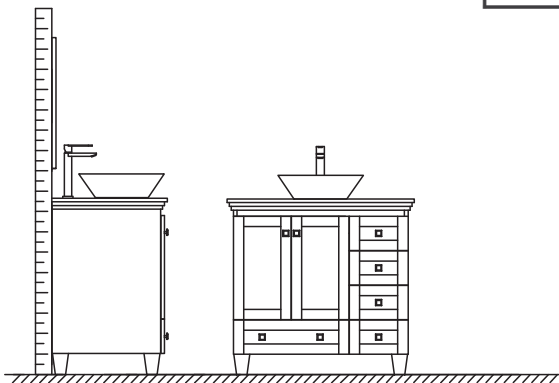
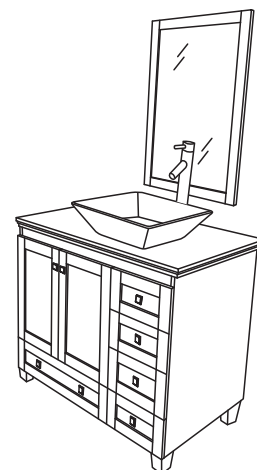


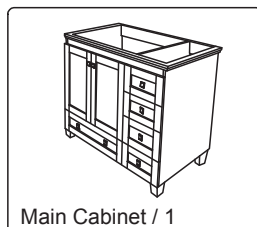
# WYNDHAM COLLECTION



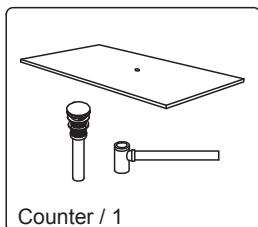
- Prior to installation, please check received items against the "Packing List".
- Please report any missing items to your retailer immediately
- Protect all surfaces from sharp objects, high heat sources, direct prolonged sunlight and chemical hazards.
- Professional installation recommended.



## PACKING LIST

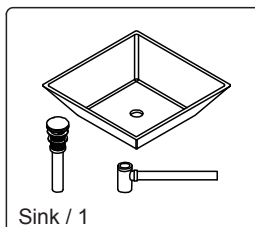


Main Cabinet / 1



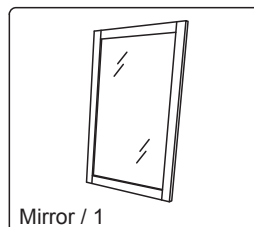
Counter / 1

OPTIONAL



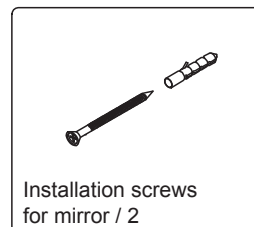
Sink / 1

OPTIONAL



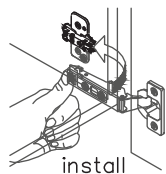
Mirror / 1

OPTIONAL

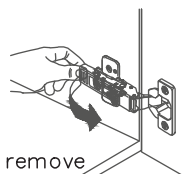


Installation screws for mirror / 2

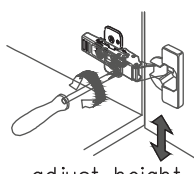
## INSTALLATION AND ADJUSTMENT OF HINGES



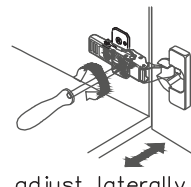
install



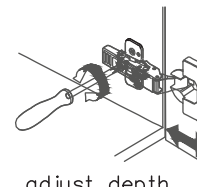
remove



adjust height

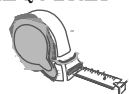


adjust laterally



adjust depth

## REQUIRED TOOLS NOT IN BOX



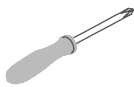
Tape measure



Pencil



Electric Drill



Phillips Screwdriver



Adjustable Wrench



Spirit Level



Silicone sealant

WC-CG8000-36  
OVERMOUNT INSTALLATION

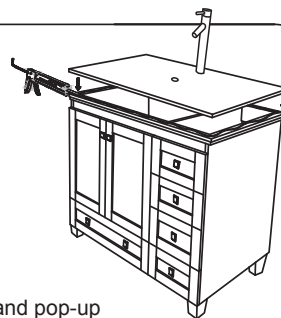
# WYNDHAM COLLECTION

## INSTALLATION INSTRUCTIONS



Cut hole in  
back of cabinet

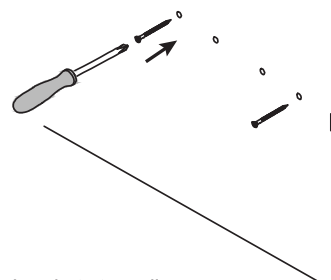
- ① Installer must cut appropriately sized hole in back of cabinet to accommodate existing placement of hot&cold wall valves and drains



- ② Install the counter and pop-up drain. Seal around the top of cabinet with clear or white silicone sealant.



- ③ Install the sink and pop-up drain. Seal around the base of the sink with clear or white silicone sealant.



- ④ Attach mirror brackets to wall with supplied screws. Hang mirrors.

WC-CG8000-36  
OVERMOUNT INSTALLATION