



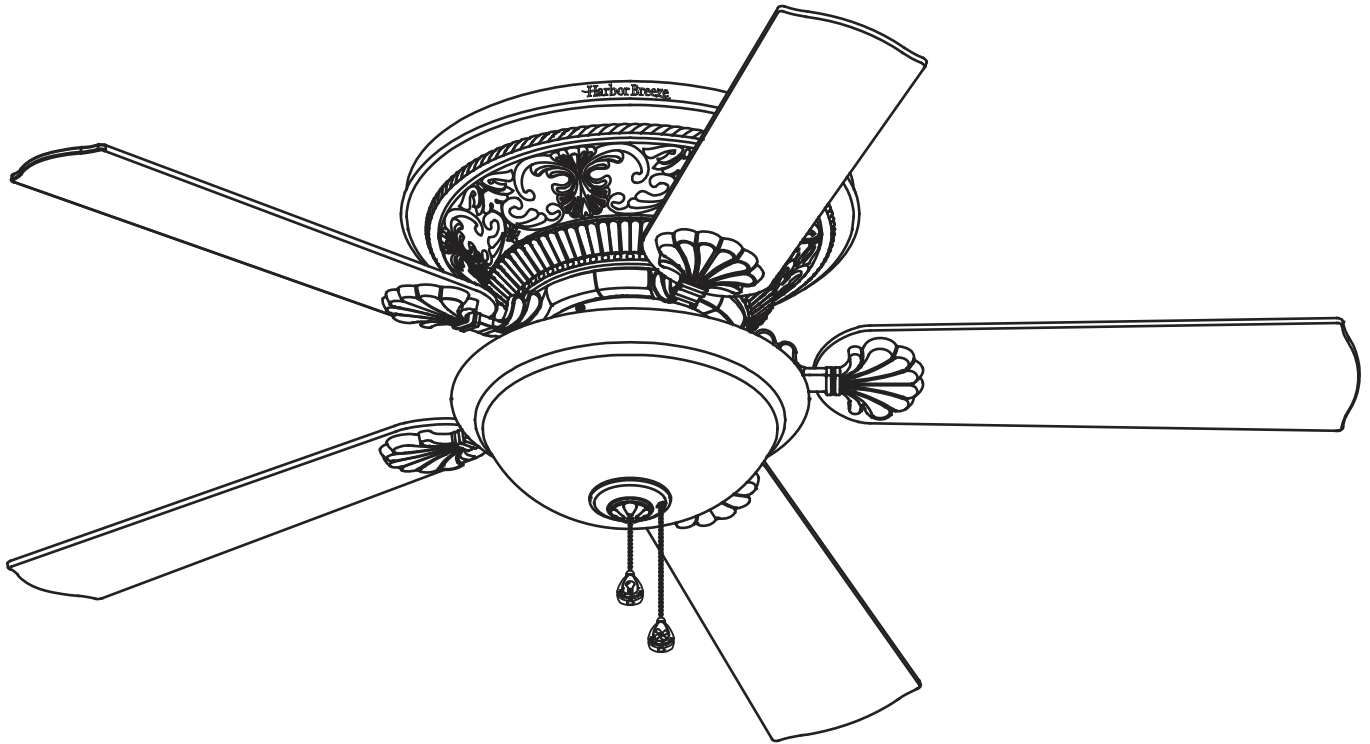
ITEM #0807420

LYNSTEAD CEILING FAN

MODEL #L1901

Harbor Breeze® is a registered trademark
of LF, LLC. All Rights Reserved.

Español p. 17



ATTACH YOUR RECEIPT HERE

Serial Number _____ Purchase Date _____



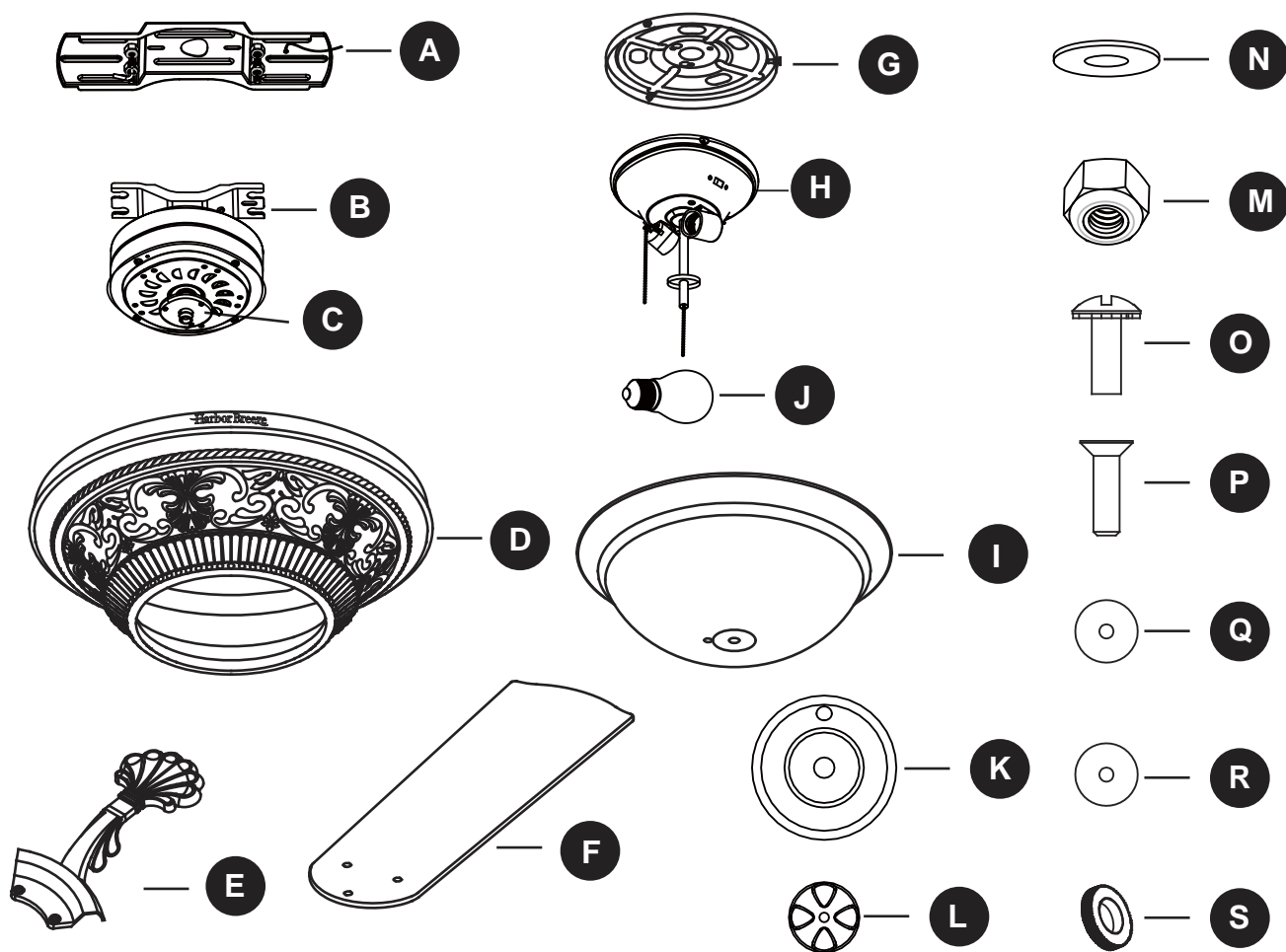
Questions, problems, missing parts? Before returning to your retailer, call our customer service department at 1-800-643-0067, 8 a.m. - 6 p.m., EST, Monday - Thursday, 8 a.m. - 5 p.m., EST, Friday.

PH19238

TABLE OF CONTENTS

Package Contents	3
Hardware Contents	4
Safety Information	4
Preparation	5
Initial Installation Instructions	6
Wiring Instructions	8
Final Installation Instructions	9
Operation Instructions	13
Care and Maintenance	13
Troubleshooting	14
Limited Lifetime Warranty	15
Replacement Part List	16

PACKAGE CONTENTS

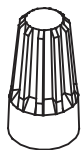


PART	DESCRIPTION	QUANTITY
A	Mounting Bracket	1
B	Motor Body	1
C	Mounting Plate (Preassembled to motor body (B))	1
D	Motor Housing	1
E	Blade Iron	5
F	Blade	5
G	Switch Housing	1
H	Light Kit	1
I	Glass Bowl	1
J	Bulb	2
K	Finial Cap	1
L	Finial	1
M	Hex Nut (Preassembled on Mounting Bracket (A))	4

PART	DESCRIPTION	QUANTITY
N	Metal Washer (Preassembled on Mounting Bracket (A))	4
O	Mounting Screw (Preassembled on Switch Housing Plate(C))	3
P	Light Kit Mounting Screw (Preassembled on Switch Housing (G))	3
Q	Silicone Washer (Preassembled on Light Kit (H))	1
R	Metal Washer (Preassembled on Light Kit (H))	1
S	Manual Nut (Preassembled on Light Kit (H))	1

HARDWARE CONTENTS(not shown actual size)

AA



Wire Nut
Qty. 4

BB



Blade Screw
Qty. 15 + 1 extra

CC



Motor Screw
Qty. 10 + 1 extra

DD



Fob
Qty. 2

SAFETY INFORMATION

READ AND SAVE THESE INSTRUCTIONS

Please read and understand this entire manual before attempting to assemble, operate or install the product.

- All electrical connections must comply with local codes, ordinances or the National Electric Code (NEC). Contact your municipal building department to inquire about your local codes, permits and/or inspections.
- Turn off electricity at main fuse box (or circuit breaker box) before beginning installation by removing fuse or by switching off circuit breaker.
- Do not connect this fixture to an electrical system that does not provide a means for equipment grounding. Never use a fixture in a two-wire system that is not grounded.
- If you are not sure your lighting system has a grounding means, do not attempt to install this fixture. Contact a qualified, licensed electrician for information regarding proper grounding methods as required by the local electrical code in your area.
- Make sure the installation site you choose allows a minimum clearance of 7 ft. from the blades to the floor and at least 30 in. from the ends of the blades to any obstruction.
- If a dimmer control switch is used with this fixture, obtain professional advice to determine the correct type and electrical rating required.
- The lighting fixture must be positioned so there is at least 1.64 ft. between the bulb and any illuminated surface.
- For supply connections, if the conductor of a fan is identified as a grounded conductor, then it should be connected to a grounded conductor power supply. If the conductor of a fan is identified as an ungrounded conductor, then it should be connected to an ungrounded conductor power supply. If the conductor of a fan is identified for equipment grounding, then it should be connected to an equipment-grounding conductor.

⚠ DANGER

- Installing a fixture into an electrical system without a proper grounding means could allow metal parts of the fixture to carry electrical currents. If any of the fixture wires, wire connections or splices are broken, cut or loose during the mounting or normal operation of the fixture, under such condition, anyone coming in contact with the fixture is subject to electrical shock, which could cause serious injury or death.
- Connection of the bare or green fixture ground wire to the black or white house wires may allow metal parts of the fixture to carry electrical currents. Under this condition anyone coming in contact with the fixture will receive electrical shock, which could cause serious injury or death.
- Be careful not to damage or cut the wire insulation (covering) during fixture installation. Do not permit wires to have contact with any surface having a sharp edge. Doing so may damage or cut the wire insulation, which could cause serious injury or death from electric shock.

WARNING

- Risk of fire. Most dwellings built before 1985 have supply wire rated for 140°F. Consult a qualified electrician before installation.
- To reduce the risk of fire or electric shock, do not use this fan with any solid state fan speed device or variable speed control.
- To reduce the risk of personal injury, do not bend the blade brackets when installing the brackets, balancing or cleaning the fan.
- Do not insert foreign objects in between rotating fan blades.
- Do not install or use the fan if any part is damaged or missing.
- To reduce the risk of fire, electric shock or personal injury, mount to metal outlet box marked 'ACCEPTABLE FOR FAN SUPPORT OF 35 LBS OR LESS' and use mounting screws provided with the outlet box and/or support directly from building structure. Most outlet boxes commonly used for the support of luminaries are not acceptable for fan support and may need to be replaced. Consult a qualified electrician if in doubt.
- Before servicing or cleaning the unit, switch power off at the service panel and lock the service disconnecting means to prevent power from being switched on accidentally. When the service disconnecting means cannot be locked, securely fasten a prominent warning device, such as a tag, to the service panel.

CAUTION

- Do not use bulbs having a wattage greater than the maximum value stated on the fixture and in this manual. Using a higher wattage bulb than specified will increase fixture temperature and increase risk of fire.

PREPARATION

Before beginning assembly of product, make sure all parts are present. Compare parts with package contents list and hardware contents list. If any part is missing or damaged, do not attempt to assemble the product.

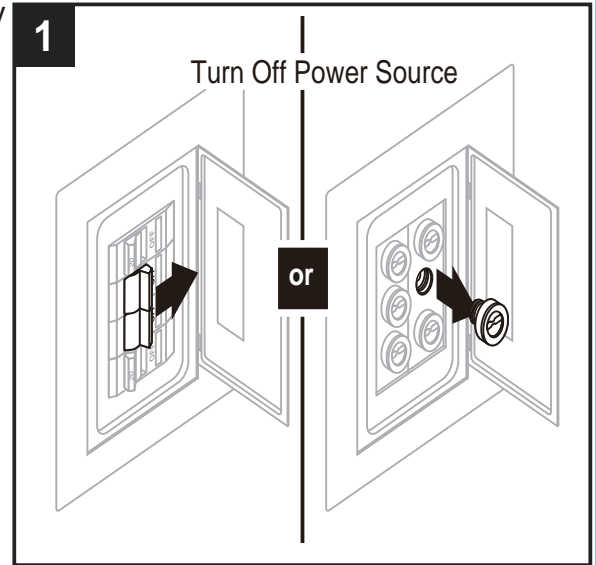
Estimated Assembly Time: 45 minutes

Tools Required for Assembly (not included): Phillips Screwdriver, Step Ladder, Tape, Pliers, Wire Cutters and Wrench.

INITIAL INSTALLATION INSTRUCTIONS

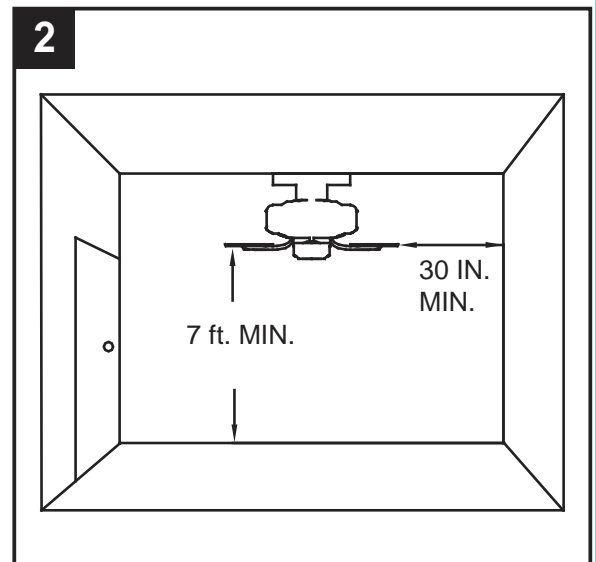
1. Turn off circuit breakers and wall switch to the fan supply line leads.

⚠ DANGER: Failure to disconnect power supply prior to installation may result in serious injury or death.



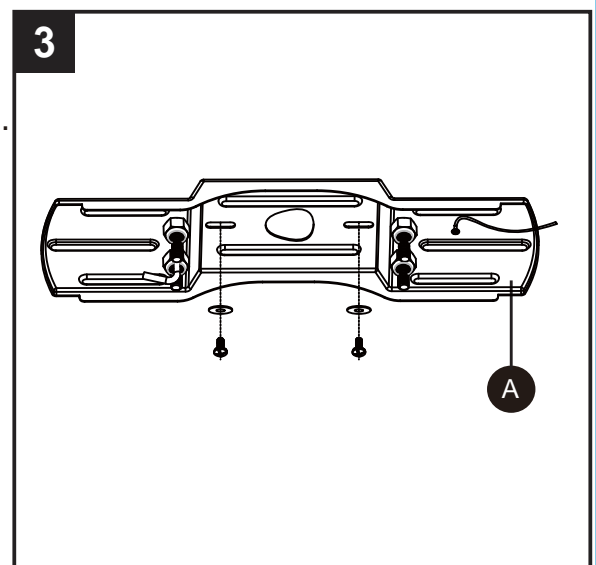
2. Fan mounting options:

This fan was designed to be mounted only on flat ceilings and can be used on ceilings less than 8 feet high (blades should be a minimum of 7 feet from the floor. It is required at least 30 inch from blade tip to nearest wall or obstruction).



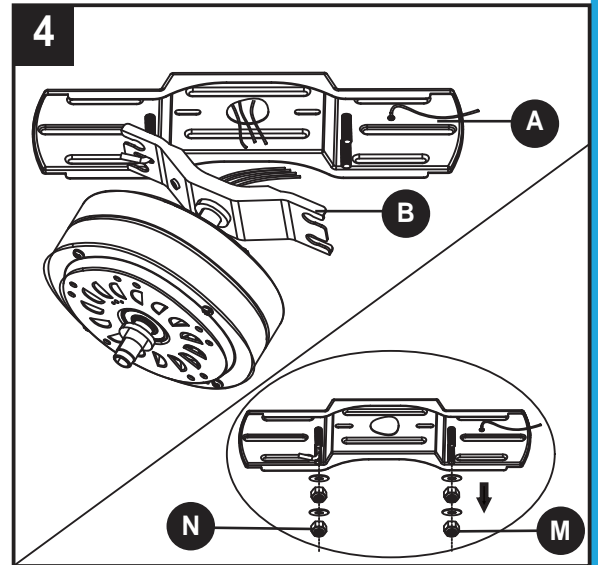
3. Check existing outlet box (not included) to ensure it is securely fastened to at least two points in a structural ceiling member and can support the full weight of the fan. Once verified, install mounting bracket (A) to the outlet box using the screws and washers provided with the outlet box.

⚠ DANGER: A loose outlet box can cause the fan to wobble and increase the fan's potential to fall, which could result in serious injury or death.



INITIAL INSTALLATION INSTRUCTIONS

4. Remove the hex nuts (M) and metal washers (N) from the threaded rods on the mounting bracket (A). Hang the motor body (B) onto the hook from the mounting bracket (A). This will allow for hands-free wiring.



WIRING INSTRUCTIONS

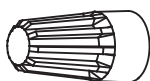
- ⚠ WARNING:** To avoid possible electrical shock, be sure electricity is turned off at the main fuse box before hanging.
- ⚠ WARNING:** If you are not sure if the outlet box is grounded, contact a licensed electrician for advice, as it must be grounded for safe operation.
- ⚠ WARNING:** If house wires are different colors than referred to in the following steps, stop immediately. A professional electrician is recommended to determine proper wiring.
- ⚠ WARNING:** If you feel that you do not have enough electrical wiring knowledge or experience, have your fan installed by a licensed electrician.

1. Make wire connections as in the wiring diagram.

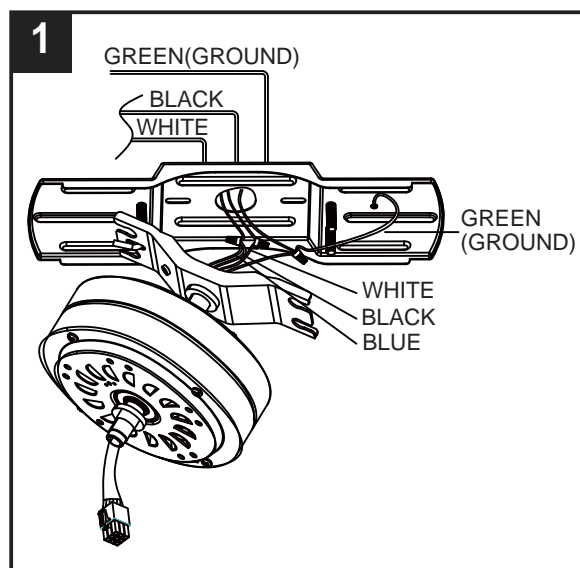
- Connect BLACK and BLUE wires from fan to BLACK (live) wire from house.
- Connect WHITE wire from fan to WHITE (Neutral) wire from house.
- Connect GREEN (GROUND) wires from mounting bracket (A) and motor body (B) to GREEN (GROUND) from house.

Hardware Used

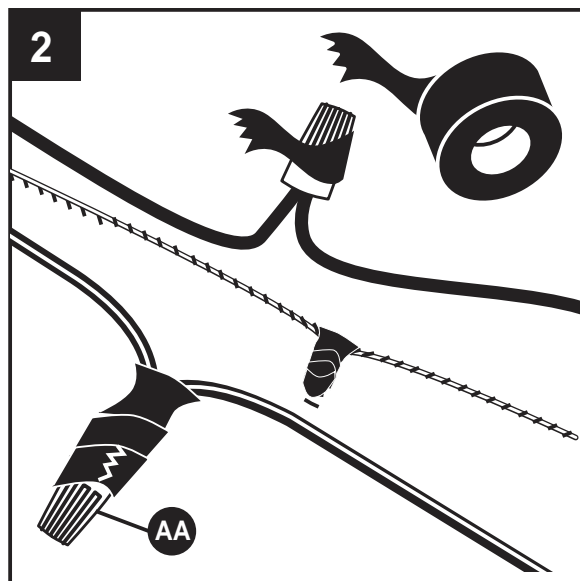
AA Wire Connector



x 3

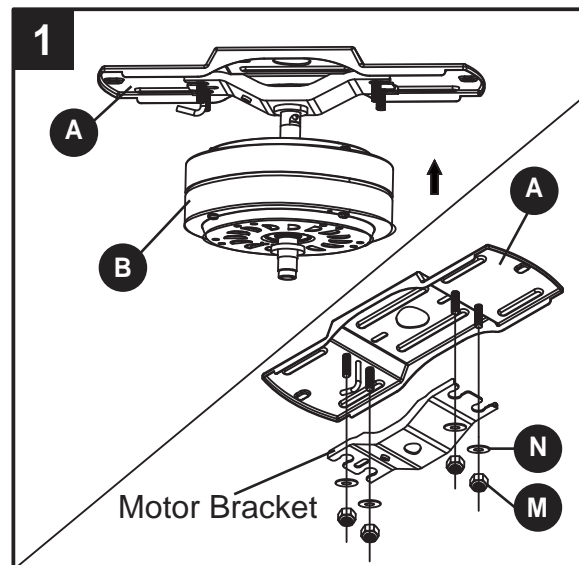


2. Wrap electrical tape (not included) around each wire connector and make sure no bare wire or wire strands are visible after making connections. Then, turn wires upward and carefully push them into the outlet box; make sure the WHITE and GREEN connections are on one side and the BLACK connections are on the other side.

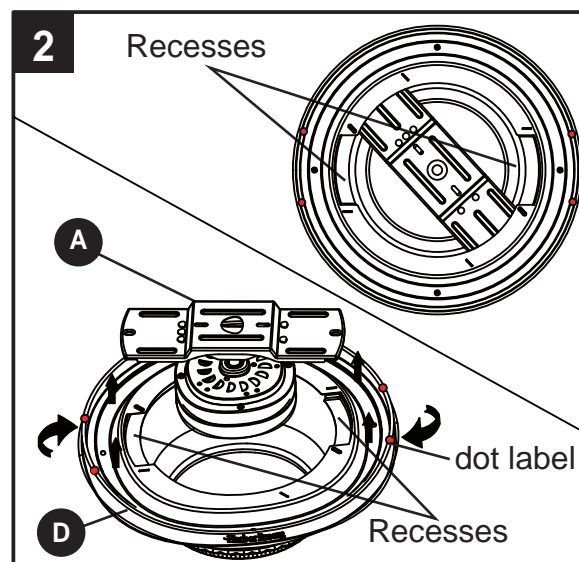


FINAL INSTALLATION INSTRUCTIONS

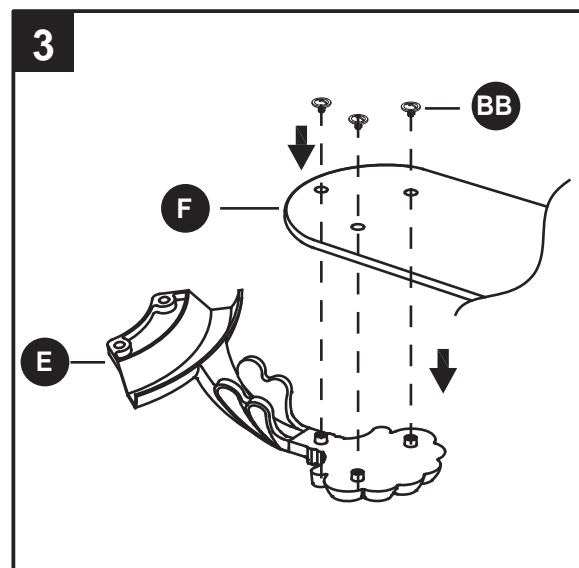
1. Lift the motor body (B) onto the mounting bracket (A), making sure not to break away any wire connections, and allow the four threaded rods from the mounting bracket (A) to insert into rubber grommets on the motor bracket from the motor body (B). Attach the hanger bracket to mounting bracket (A) using the metal washers (N) and hex nuts (M) removed previously. Tighten the hex nuts with a wrench (not included).



2. Raise the motor housing (D) up, align the four dot labels on the motor housing (D) with the mounting bracket (A), place the mounting bracket (A) onto the recesses on the motor housing (D) properly, then rotate the motor housing (D) clockwise until the mounting bracket (A) slide into the slot hole inside the motor housing (D).



3. Position blade iron (E) under blade (F). Secure them with three blade screws (BB). Do not tighten blade screws (BB) until three are in place. Then, tighten each blade screw (BB) starting with the center blade screw (BB). Repeat for all blade assemblies.



Hardware Used

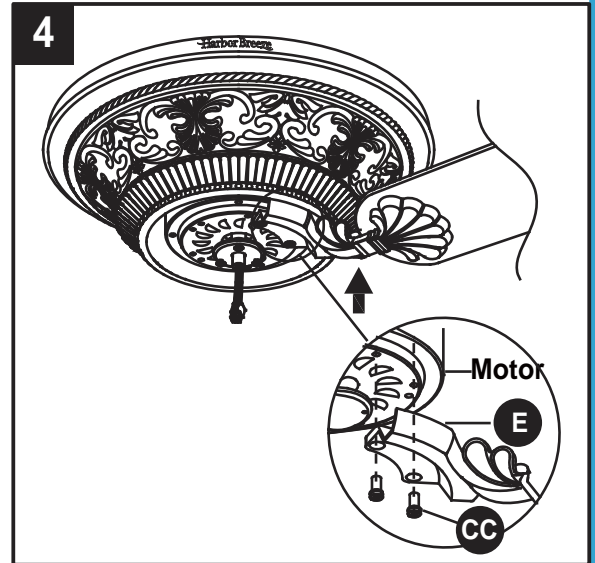
BB	Blade Screw		x 15
----	-------------	---	------

FINAL INSTALLATION INSTRUCTIONS

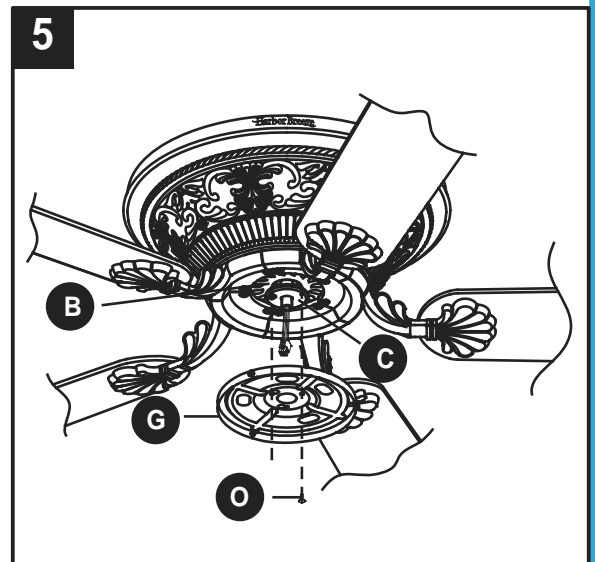
4. Align the holes between the blade iron (E) and motor. Install the blade assembly to the motor using motor screws (CC), and partially tighten. Repeat for the remaining blade assemblies. Securely tighten all motor screws (CC).

Hardware Used

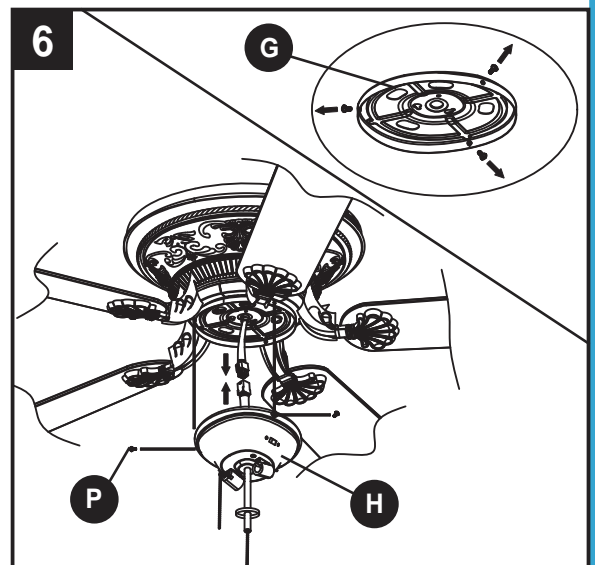
CC Motor Screw  x 10



5. Remove one of the mounting screws (O) preinstalled on the mounting plate (C) and loosen (do not remove) the other two. Insert the wires from the motor body (B) through the center hole in the switch housing (G). Attach the switch housing (G) to the mounting plate (C) by placing the keyslot holes from the switch housing (G) onto the two protruding screw heads on the mounting plate (C). Twist the switch housing (G) until the screw heads engage the keyslots. Install mounting screws (O) into the closed hole in the switch housing (G). Tighten all mounting screws (O) to complete attachment of the switch housing (G).

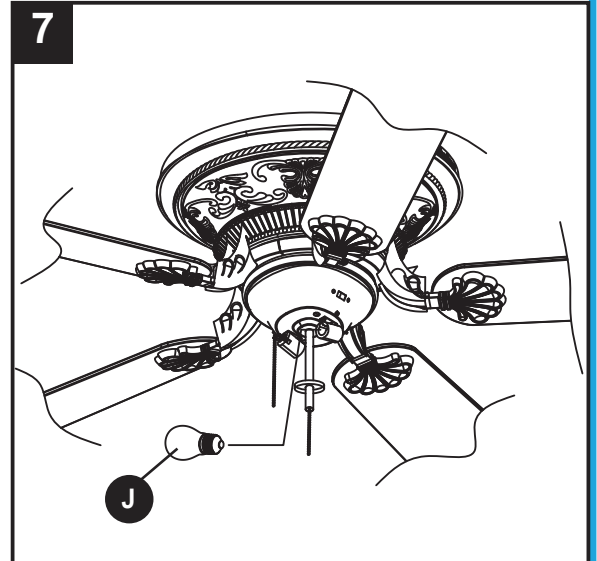


6. Remove the three screws (P) preinstalled on the switch housing (G). Attach the connector from the light kit (H) to the connector from the motor body. Align the three holes between the light kit (H) and the switch housing (G). Re-install the switch housing screws (P) to attach the light kit (H) to the switch housing (G).

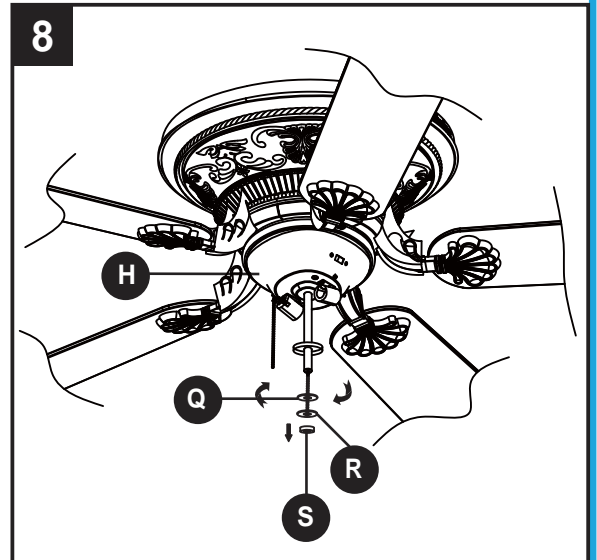


FINAL INSTALLATION INSTRUCTIONS

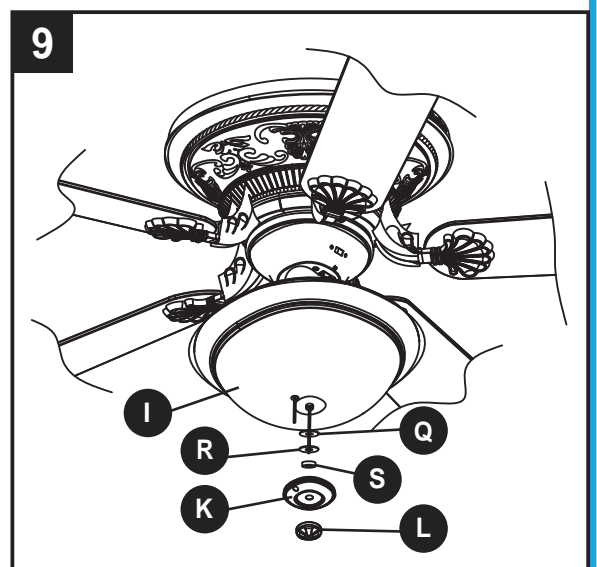
7. Install the two bulbs (J) into each socket.



8. Remove and retain the silicone washer (Q), metal washer (R) and manual nut (S) from the threaded rod on the light kit (H).



9. Lift the glass bowl (I) up to the light kit (H), allowing the threaded rod to go through the center hole in the bottom of the glass bowl (I). While holding the glass bowl (I), guide the pull chains through the appropriate holes on the bottom of the glass bowl (I). Place the silicone washer (Q), metal washer (R) and the manual nut (S) onto the rod and tighten securely. Guide the pull chains through the appropriate holes on the finial cap (K). Attach the finial cap (K) to the glass bowl (I) and tighten them using the finial (L).


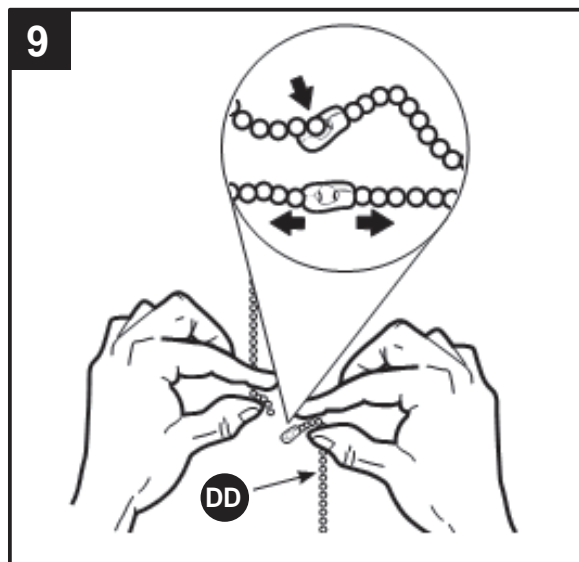


FINAL INSTALLATION INSTRUCTIONS

9. Connect the fobs (DD) to the appropriate pull chains.

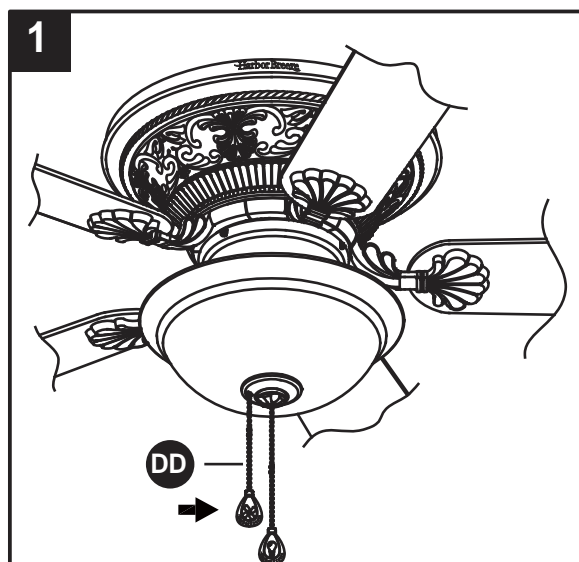
Hardware Used

DD Fob x 2

A diagram showing two identical fobs, each consisting of a small circular head with a loop and a chain, hanging vertically.

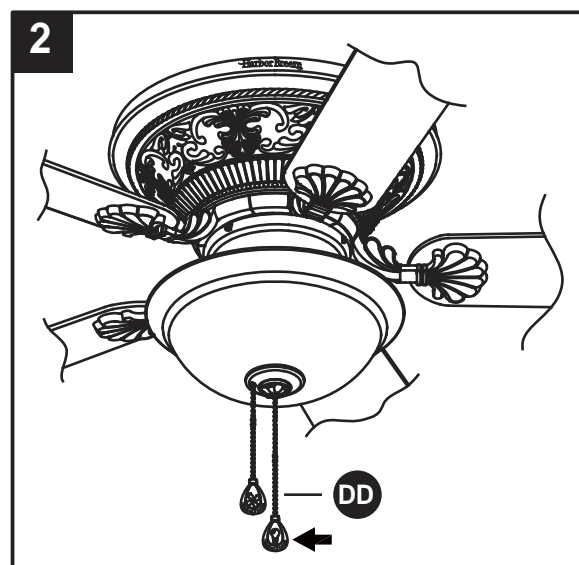
OPERATION INSTRUCTIONS

1. The fob (DD) marked with a fan image is for motor speed control: High, Medium, Low and Off. Pull once for each position.



2. The fob (DD) marked with a lamp image controls the light either On or Off with each pull of the chain.

⚠ WARNING: Please do not change to wall control or remote control.



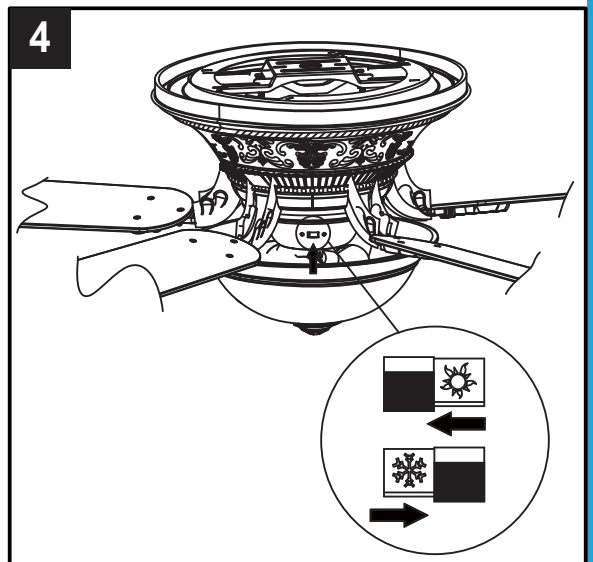
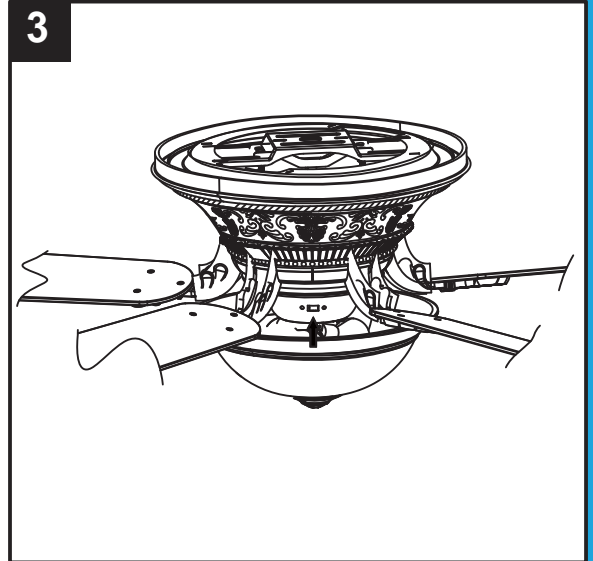
OPERATION INSTRUCTIONS

3. When the season changes, you may want to change the direction in which the fan spins. To switch between clockwise and counterclockwise rotation, flip the fan reversal switch.

NOTE: Wait for fan to stop before reversing the switch.

4. In warmer weather, counterclockwise rotation creates a downward air flow, which cools the air. Push the switch LEFT and see a SUN icon.

In cooler weather, clockwise rotation creates an upward air flow, which moves hot air from the ceiling into the room. Push the switch RIGHT and see a SNOWFLAKE icon.



CARE AND MAINTENANCE

Important: Shut off main power supply before beginning any maintenance. Do not use water or a damp cloth to clean the ceiling fan.

- At least twice each year, tighten all screws and lower canopy motor housing to check mounting bracket screws and hex nuts..
- Clean fan housing with only a soft brush or lint-free cloth to avoid scratching the finish. Clean blades with a lint-free cloth. You may occasionally apply a light coat of furniture polish to wood blades for added protection.
- Bulb Replacement: Use two (2) 5.5 watt max type A-15 LED bulbs CFL bulbs are not recommended for this item.

TROUBLESHOOTING

PROBLEM	POSSIBLE CAUSE	CORRECTIVE ACTION
Fan sounds noisy.	<ol style="list-style-type: none"> 1. Hex nuts are loose. 2. Normal noise. 3. Wire connectors inside switch housing rattling. 4. Cracked blade. 5. Faulty light bulb installation. 6. Glass is not secure. 	<ol style="list-style-type: none"> 1. Tighten all hex nuts with wrench securely. 2. Allow "break-in" period of 24 hours. Most noises associated with a new fan will disappear after this period. 3. Check to make sure wire connectors in switch housing are not rattling against each other or against the interior wall of the switch housing. 4. Replace blades. 5. Check to be sure light bulb is tight in socket and not touching glass shade. 6. Secure the glass.
Fan wobbles.	<ol style="list-style-type: none"> 1. Hanger bracket and/or ceiling outlet box is not securely fastened. 2. Hex nuts are loose. 3. Blades are loose. 4. Blade holders incorrectly attached and loose. 5. Fan blade out of balance. 6. Wobble appears when changing fan speed. 	<ol style="list-style-type: none"> 1. Tighten the hanger bracket screws to the outlet box, and/or secure outlet box. 2. Tighten all hex nuts with wrench securely. 3. Check that all blades are screwed firmly into blade holders. 4. Check to be sure the fan blade flanges sit firmly and uniformly to the surface of the motor hub. If flanges are seated incorrectly, loosen the flange screws and retighten. 5. If blade wobble is still noticeable, interchanging two adjacent (side by side) blades can redistribute the weight and possibly result in smoother operation, or you can use supplied balancing kit to balance blades. 6. When switching from medium to low speed, you may notice some fan wobble. When the fan stabilizes at low speed, wobble will disappear.
Fan does not start.	<ol style="list-style-type: none"> 1. Power turned off, fuse blown, or circuit breaker tripped. 2. Loose wire connections or wrong connections. 3. Motor reversing switch not engaged. 4. Pull chain switch not "on". 	<ol style="list-style-type: none"> 1. Turn power on, replace fuse, or reset breaker. 2a. Turn power off and loosen motor housing, check all connections according to section "WIRING INSTRUCTIONS". 2b. Check the plug connection in the switch housing. 3. Push switch firmly right or left (up or down). Fan will not operate when switch is in the middle. 4. Pull switch chain.
Light does not work.	<ol style="list-style-type: none"> 1a. Wrong wire connection. 1b. Bulb is burned out. 	<ol style="list-style-type: none"> 1a. Refer to Step 1, page 8 to ensure all wire connections were done correctly. 1b. Replace the bulbs.

LIMITED LIFETIME WARRANTY

The manufacturer warrants this fan to be free from defects in workmanship and material present at time of shipment from the factory for life (with limitations) from the date of purchase. This warranty applies only to the original purchaser. The manufacturer agrees to correct such defect at no charge or, at our option, replace the ceiling fan with a comparable or superior model.

To obtain warranty service, present a copy of your sales receipt as proof of purchase. All cost of removal and reinstallation are the expressed responsibility of the purchaser. Any damage to the ceiling fan by accident, misuse or improper installation, or by affixing accessories not produced by this warranty, are at the purchaser's own responsibility. The manufacturer assumes no responsibility whatsoever for fan installation during the limited lifetime warranty. Any service performed by an unauthorized person will render the warranty invalid.

Due to varying climatic conditions, this warranty does not cover changes in brass finish, rusting, pitting, tarnishing, corroding or peeling. Brass finish fans maintain their beauty when protected from varying weather conditions. Any glass provided with this fan is not covered by the warranty.

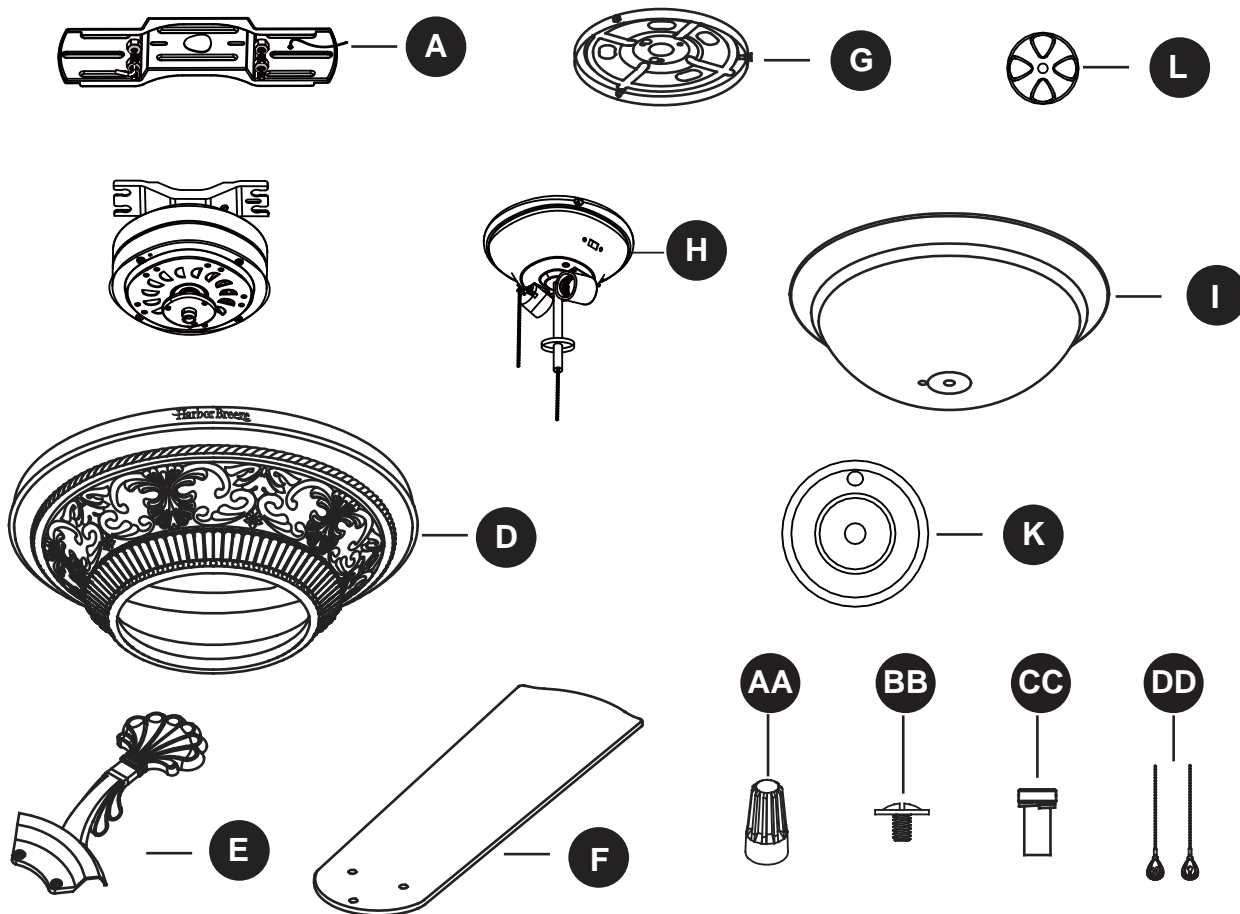
Any replacement of defective parts for the ceiling fan must be reported within the first year from the date of purchase. For the balance of the warranty, call our customer service department at 1-800-643-0067 for return authorization and shipping instructions so that we may repair or replace the ceiling fan. Any fan or parts returned improperly packaged is the sole responsibility of the purchaser. There is no further expressed warranty. The manufacturer disclaims any and all implied warranties.

The duration of any implied warranty which can not be disclaimed is limited to the lifetime limited period as specified in our warranty. The manufacturer shall not be liable for incidental, consequential or special damages arising at or in connection with product use or performance except as may otherwise be accorded by law. This warranty gives you specific legal rights, and you also have other rights which vary from state to state. This warranty supersedes all prior warranties.

NOTE: A small amount of "wobble" is normal and should not be considered a defect.

REPLACEMENT PART LIST

For replacement parts, call our customer service department at 1-800-643-0067, 8 a.m. - 6 p.m., EST, Monday - Thursday, 8 a.m. - 5 p.m., EST, Friday.



Part	Description	Part#
A	Mounting Bracket	A102-0374005
D	Motor Housing	A113-0375490
E	Blade Iron	A143-0193490
F	Blade	A141-0244036
G	Switch Housing	A121-0143005
H	Light Kit	A187-0225036
I	Glass Bowl	A182-0230001
K	Finial Cap	A183-0031490
L	Finial	A186-0109490
AA	Wire Nut	B168-0598005
BB	Blade Screw	
CC	Motor Screw	
DD	Fob	

Printed in China