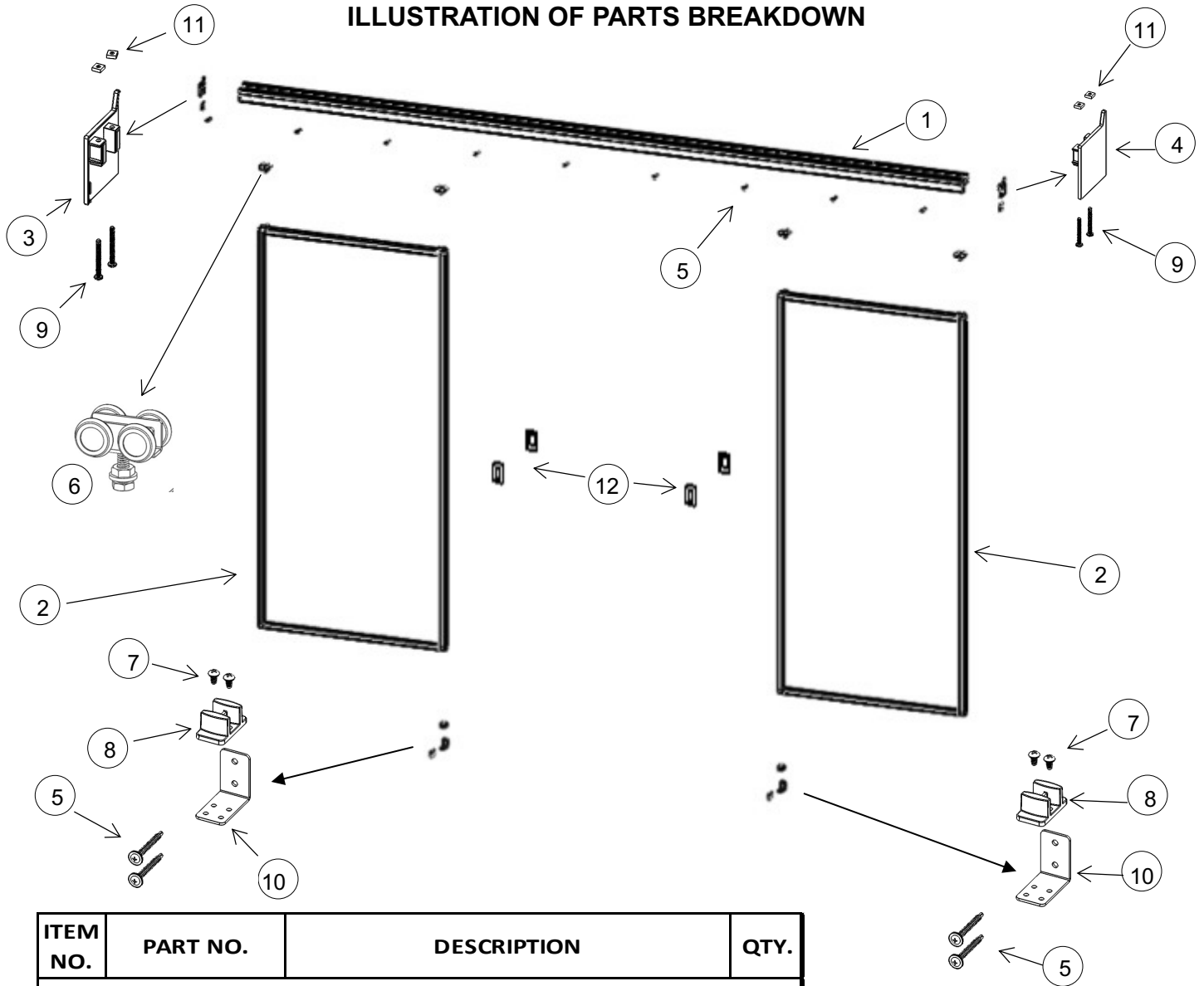
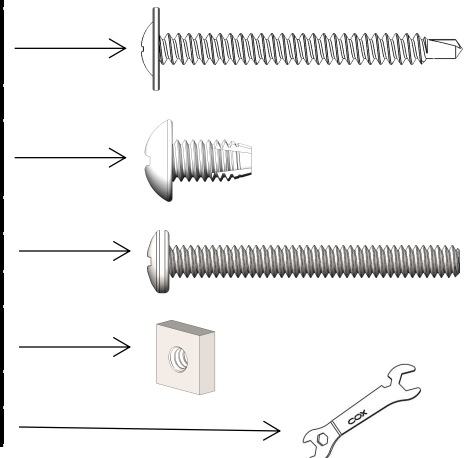


ILLUSTRATION OF PARTS BREAKDOWN



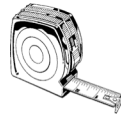
ITEM NO.	PART NO.	DESCRIPTION	QTY.
<b>FRAMEWORK:</b>			
1	8201	TRACK	1
2	9850	DOOR PANEL	2
<b>HARDWARE BAG:</b>			
3	CHH-436	END CAP, LEFT	1
4	CHH-438	END CAP, RIGHT	1
5	CHS-58	#8 X 1-1/2" WASHER HEAD SELF DRILLING SCREWS	10
6	CH32-076-000	TOP ROLLER ASSEMBLY	4
7	CHS-60	#8-32 X 5/16" SELF TAPPING PAN HEAD SCREW	4
8	CHH-446	BOTTOM GUIDE	2
9	CHS-44	#6-32 X 1-1/4" PAN HEAD SCREW	4
10	CHH-530	L BRACKET	2
11	CHS-45	#6 SQUARE NUT	4
12	CHH-440	(Optional Special Order) HANDLE	4
13	CH43-019	WRENCH	1



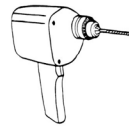
**1. TOOLS REQUIRED FOR INSTALLATION:**



Pencil



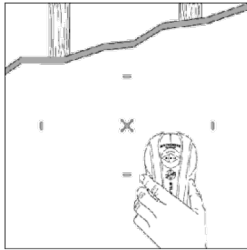
Tape Measure



No. 2 Phillips tip screwdriver,  
Drill w/ No. 2 Phillips tip  
& 3/16" Metal Drill Bit



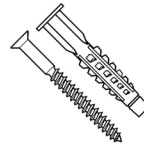
Roller Bracket  
Wrench (Included)



Stud Finder



Level



Wall Anchors  
(Not Included)

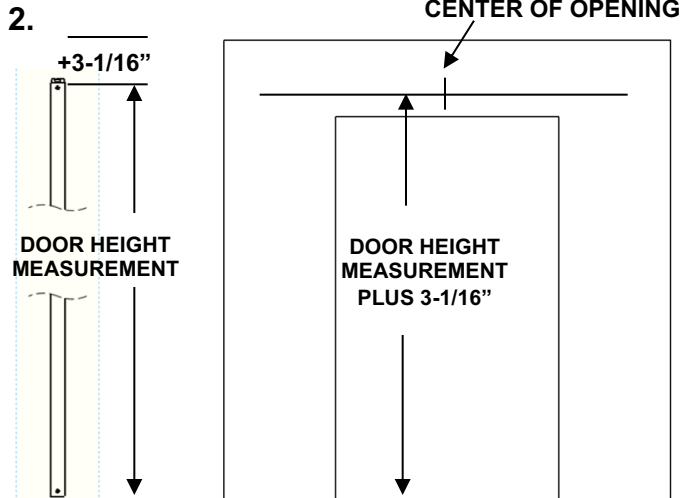


Safety Goggles  
(Recommended)

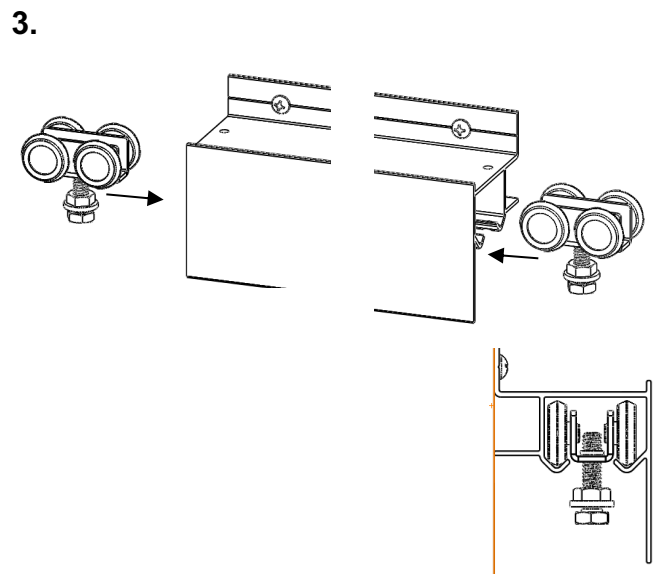
**IMPORTANT:** Before beginning installation, read instructions thoroughly and carefully. Installation may require the need for anchors and/or additional screws that are not included in this package. Always protect your eyes with safety goggles.

The installation instructions listed below are for non-cased openings. If your opening has casing /molding around it then the casing/molding should be removed or a mounting board can be placed behind the track for proper door operation. Track assembly must be installed into wall studs / solid blocking or mounting board.

**If you have any questions or comments please contact our Customer Service Department at:  
1-888-244-1734 or visit [www.chaparraldoors.com](http://www.chaparraldoors.com)**

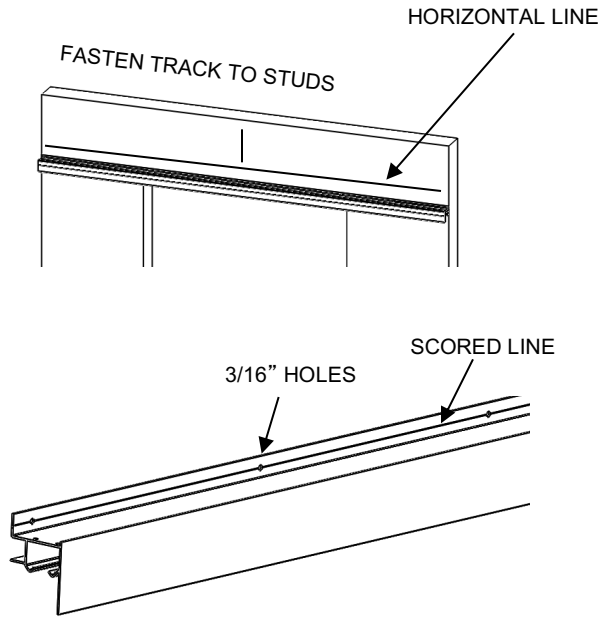


- A. Measure from the finished floor the height of the door plus 3-1/16". (If the finished floor has carpet then measure from the top of the carpet.)
- B. Mark the line location and using a level draw a horizontal line across the opening.
- C. Mark a vertical line in the center of the door opening.
- D. Use a stud finder to locate the studs in the wall and mark their location along the horizontal line.



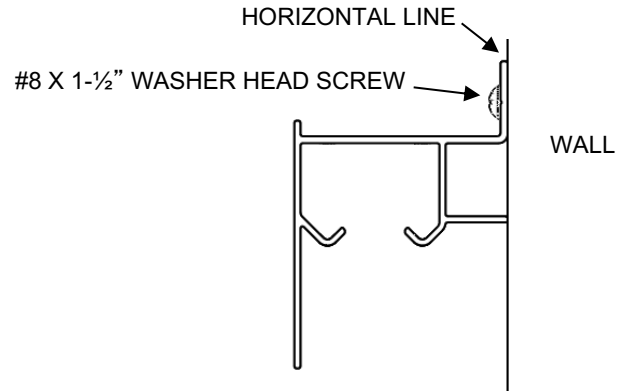
- A. Insert the top roller assemblies (item #6) into the track (item # 1).
- B. Keep the top roller assemblies close to the end of the track until engaging the rollers with the door panel (item #2).

4.



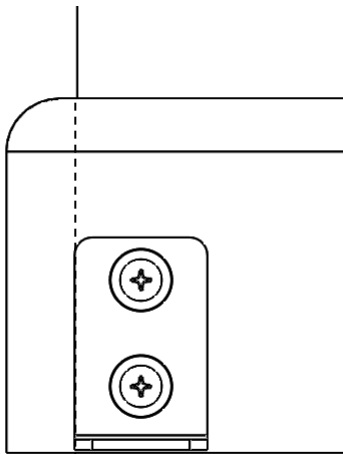
- A. Place the track in position (top edge of the track on the horizontal line and centered on the vertical line). Transfer the stud lines to the track and pre-drill the track along the scored line with a 3/16" drill bit.

5.



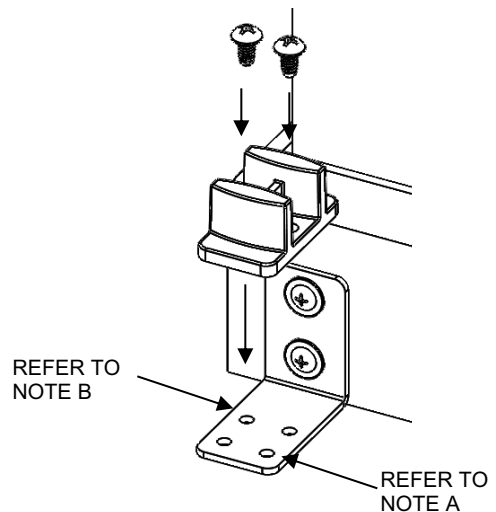
- A. Attach the top track to the wall using #8 x 1-1/2" washer head screws (Item #5).  
 B. If the end of the track does not land on a stud then use a wall anchor to secure that end.

6.



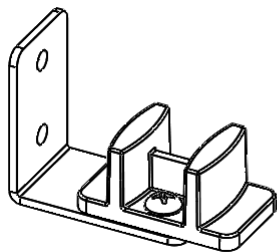
- A. Position the L-Bracket (Item #10) on the wall or baseboard.  
 B. Align the vertical edge of the L-Bracket with the vertical edge of the wall as shown and fasten it the L-Bracket with two #8 X 1-1/2" Washer Head Screws (Item #5).  
 C. Leave about a 1/8" gap between the floor and the bottom of the L-Bracket.

7.

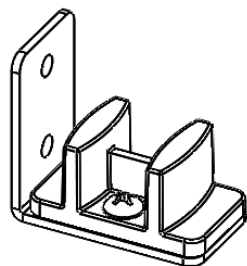


- A. If the L-Bracket is attached directly to the wall; using a Phillips head screwdriver attach the bottom guide (Item #8) to the L-Bracket using two #8-32 5/16" Self Tapping Pan Head Screws (Item #7) by inserting the screws into the holes that are furthest from the wall. **(REFER TO STEP 8 EXAMPLE A)**  
 B. If the L-Bracket is attached to a baseboard use the holes that are closest to the wall. **(REFER TO STEP 8 EXAMPLE B)**

8.

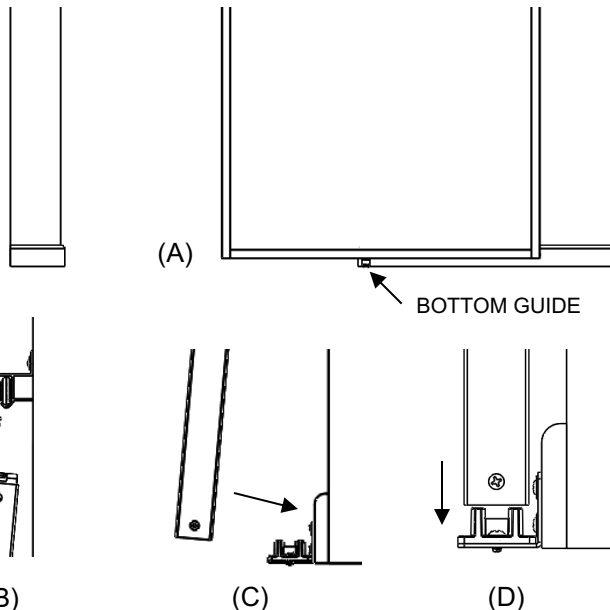


EXAMPLE A



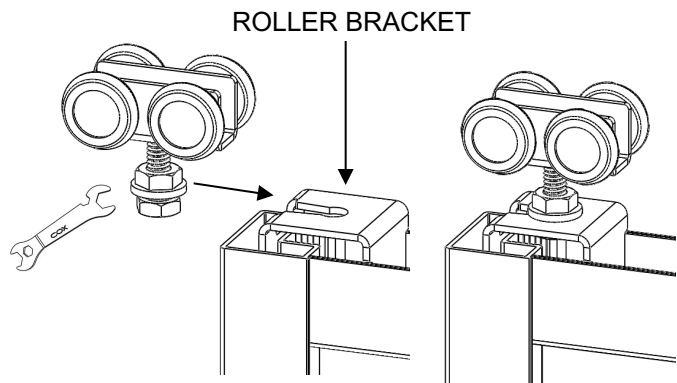
EXAMPLE B

9.



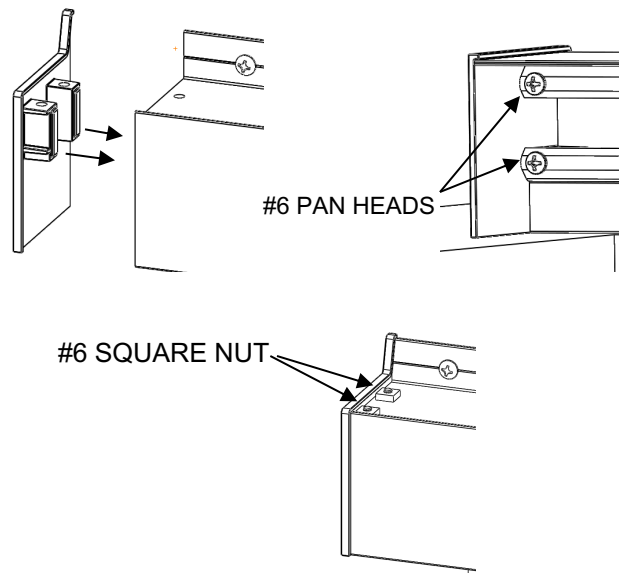
- A. Center the door in front of the bottom guide.
- B. Insert the top of the door under the track.
- C. Place the door over the bottom guide.
- D. Lower the door over the bottom guide.

10.



- A. Engage the top rollers into the roller brackets at both ends.
- B. Using the wrench that is included in your hardware bag (Part # CH43-019) adjust the rollers so the bottom of the door is approximately 1/16" above the bottom guide.
- C. Make sure the door moves freely along the top track and the bottom guide stays inside the bottom rail of the door, then tighten the top nut on the roller assembly to lock the position.

11.



- A. Slide the End Caps (Items # 3 & 4) into position at both ends.
- B. Secure the End Caps using four #6 -32 X 1-1/4" Pan Head Machine Screws and four #6 Square Nuts as shown at both ends.