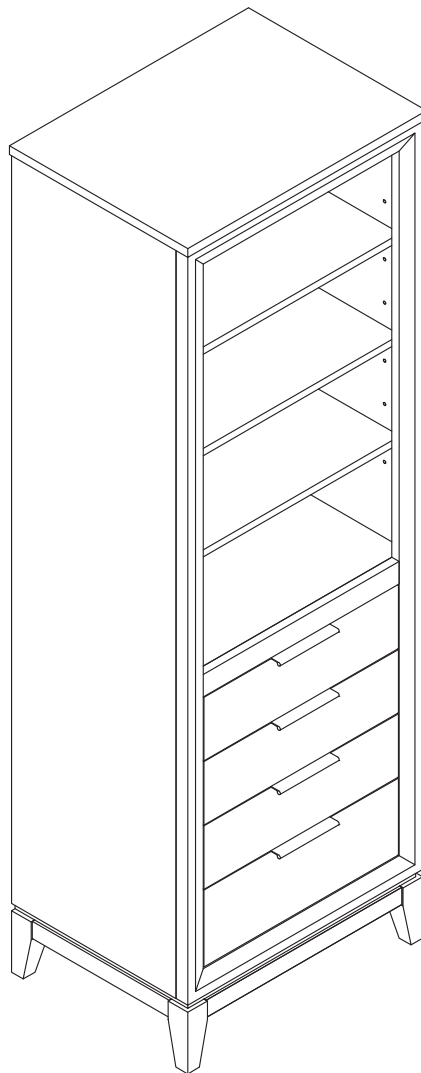


welcoming • sophisticated • inspiring

24-IN Floor Cabinet
(24-IN W x 18-IN D x 72-IN H)

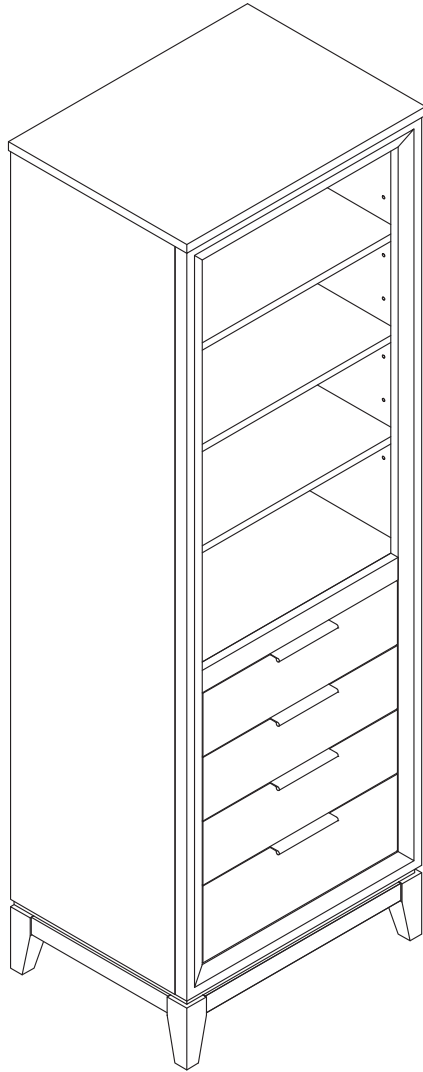


Date Purchased _____

Questions, problems, missing parts?

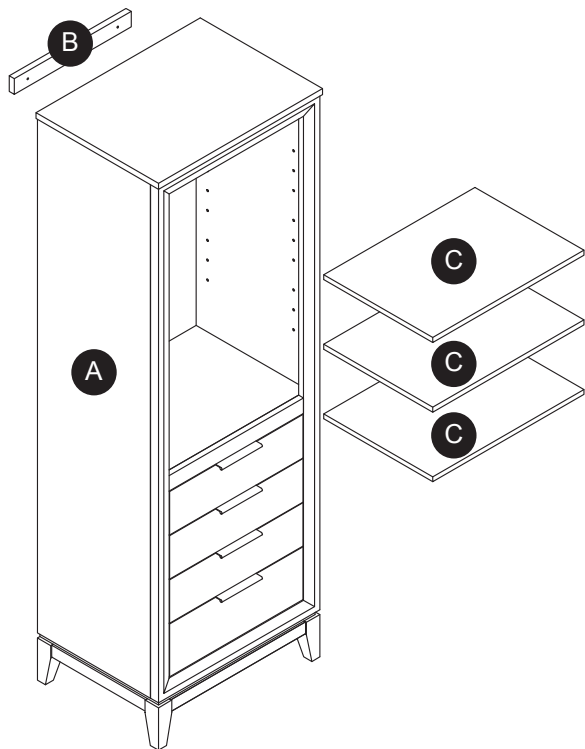
Before returning to your retailer,
call our customer service department at
1-855-571-1044 9 a.m. - 5 p.m., EST, Monday-Friday.
www.greentouchhome.com





MODEL NUMBER	DESCRIPTION
1192FC-24-201	24" White Finish Floor Cabinet
1192FC-24-242	24" Light Gray Finish Floor Cabinet
1192FC-24-245	24" Coffee Oak Finish Floor Cabinet

PACKAGE CONTENTS



PART	DESCRIPTION	QUANTITY
A	Cabinet	1
B	Wall Mounting Spacer Bar (preassembled to Cabinet (A))	1
C	Shelf	3

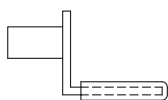
HARDWARE CONTENTS

AA



Touch-up pen
Qty.1

BB



Shelf pin
Qty.12

SAFETY INFORMATION

Please read and understand this entire manual before attempting to assemble, operate or install this product.

WARNING

- Some steps are more easily handled with two adults.

CAUTION

- Before installation, carefully use scissors or utility knife to cut and unwrap all parts. Make sure you DO NOT discard the hardware.
- Use care when installing your new floor cabinet; take your time and follow the installation instructions closely.

KEEP THESE INSTRUCTIONS FOR FUTURE REFERENCE.

PREPARATION

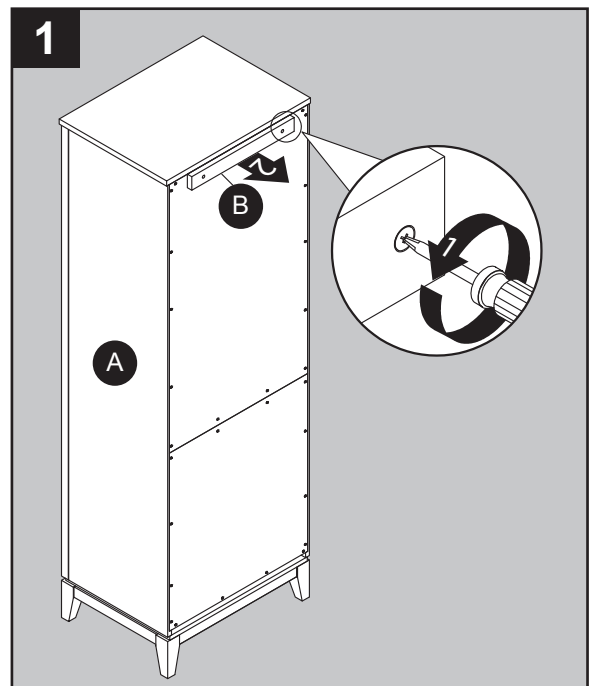
Before beginning assembly of product, make sure all parts are present. Compare parts with package contents list and hardware contents list. If any part is missing or damaged, do not attempt to assemble the product.

Estimated Assembly Time: 20 minutes (24 hours for adhesive to dry).

Tools Required for Assembly (not included): Phillips screwdriver, utility knife or scissors, power drill with drill bit and measuring tape.

INSTALLATION INSTRUCTIONS

1. If there is baseboard at the location where you want to install floor cabinet then directly go to step 2. If there isn't a baseboard at the location, please remove the wall mounting spacer bar (B) from back of cabinet by unscrewing the screws on the back of the wall mounting spacer bar then go to step 2.

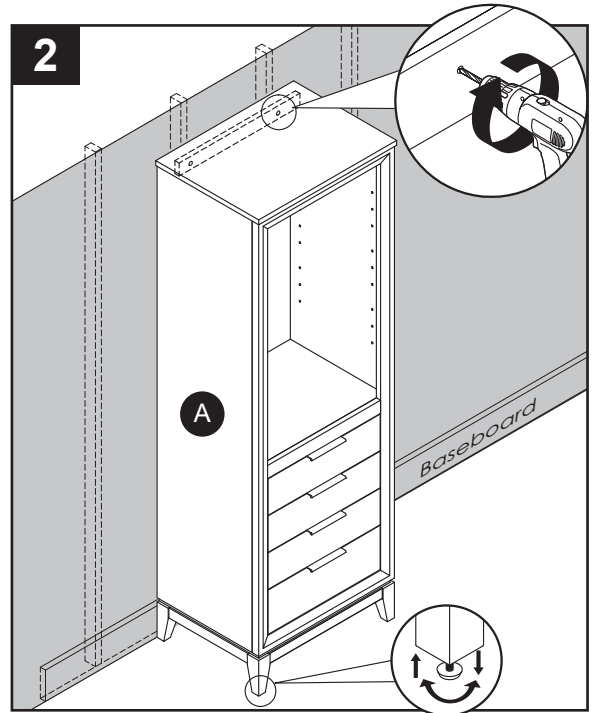


INSTALLATION INSTRUCTIONS

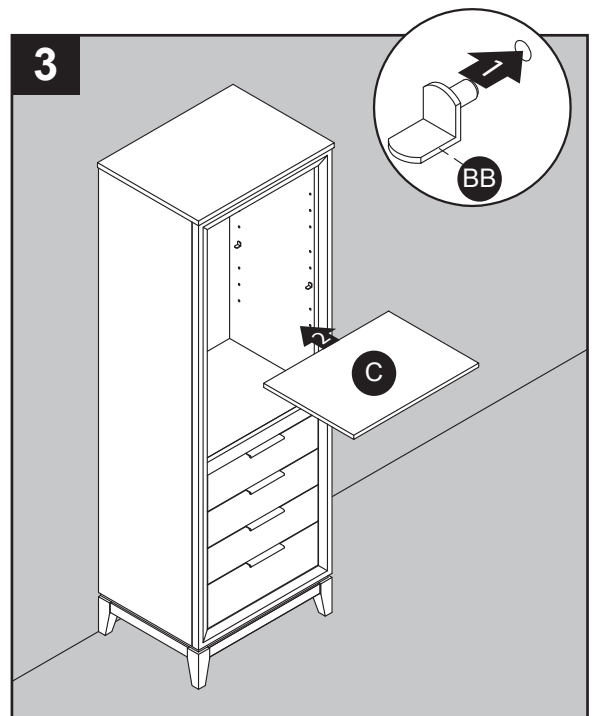
2. Clean area where the cabinet (A) will be permanently located prior to beginning installation, ensuring the cabinet (A) will not interfere with any plumbing or electrical lines once mounted.

Locate wall studs and mark locations. With the help of another adult, place completed cabinet assembly to its final location. Adjust the height of the cabinet (A) by twisting the adjustable leveler foot pins on the bottom of each leg. Twist clockwise to decrease height or twist counter-clockwise to increase cabinet height.

Using hardware appropriate for your wall type such as cabinet screw or toggle bolt (not included), secure cabinet (A) to preferably two wall studs anywhere through the cabinet mounting bar. Be careful not to disturb any electrical or water lines that may be concealed in the wall.



3. Insert shelf pins (BB) at desired height, ensuring they are level. Place shelves (C) on top of shelf pins (BB).

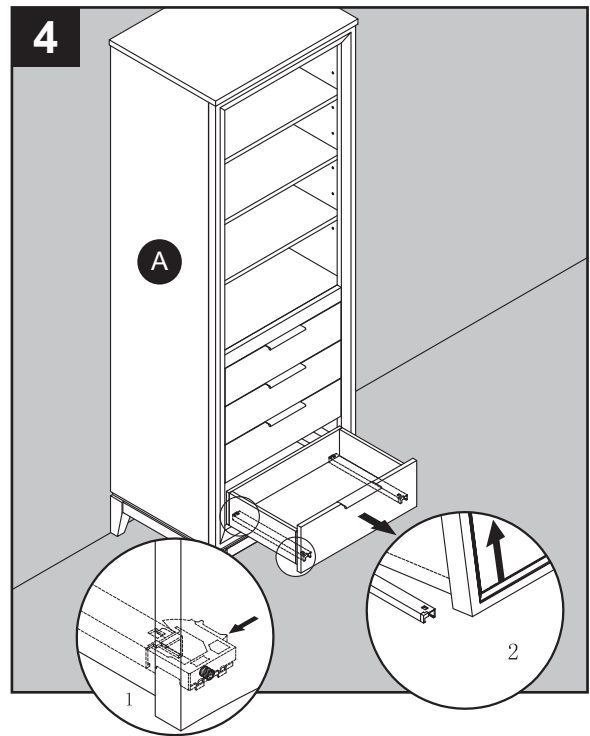


Hardware Used

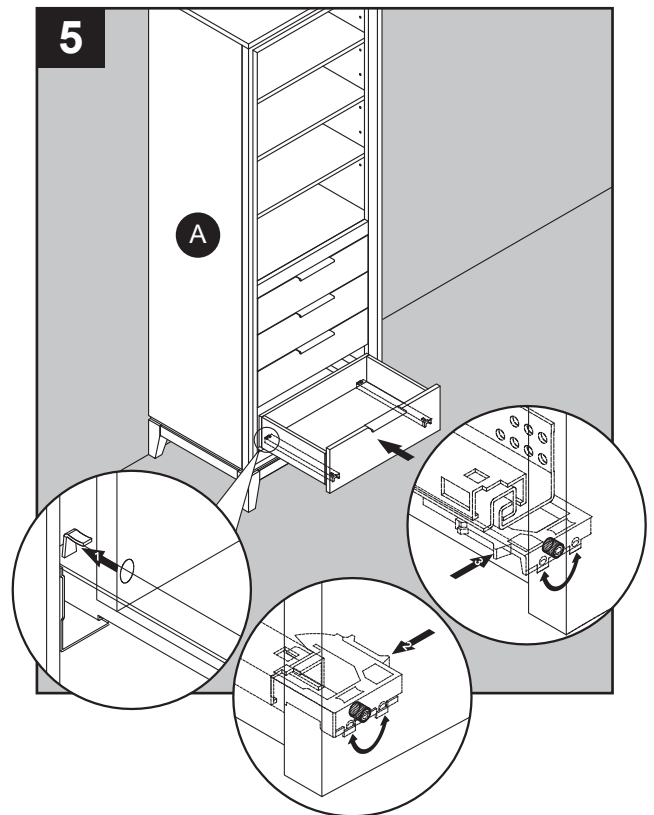
- BB Shelf Pin x 12

INSTALLATION INSTRUCTIONS

4. To remove drawers preassembled in cabinet (A). Fully extend drawers, locate plastic levers on metal glide tracks at left and right sides of drawer box, push on plastic levers on both sides at the same time, to disengage drawer box from the glides, Then gently lift the drawer up to remove it from the glide tracks.



5. Locate drawers and set aside. Fully extend lower drawer glide tracks. With the help of another adult, hold the extended glide in one hand and the drawer in the other. Gently place the back of the drawer box into the metal hook located on the back of the drawer track. Once the glide hook has been slid into the hole in the back of the drawer box, gently lower the drawer box down onto the extended glide tracks. At the same time depress both of the glide handles and allow the drawer box to fully rest on the glide tracks. Test to see if the drawer box is fully engaged. If the drawer box can still be lifted off the glide track then start again from the beginning. Never force anything or else damage to the drawer or glide hardware could result. Repeat for remaining drawers. The drawers location can be adjusted slightly up or down by twisting the adjuster knob next to the glide handles.



CARE AND MAINTENANCE

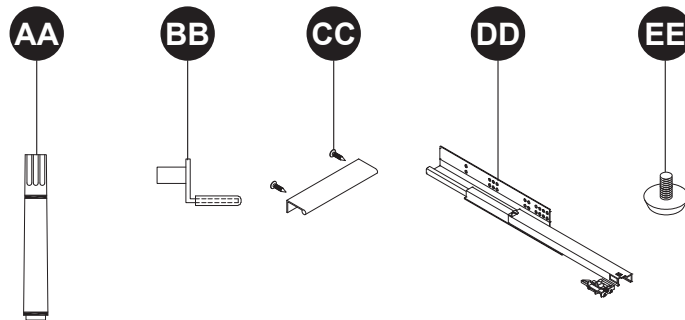
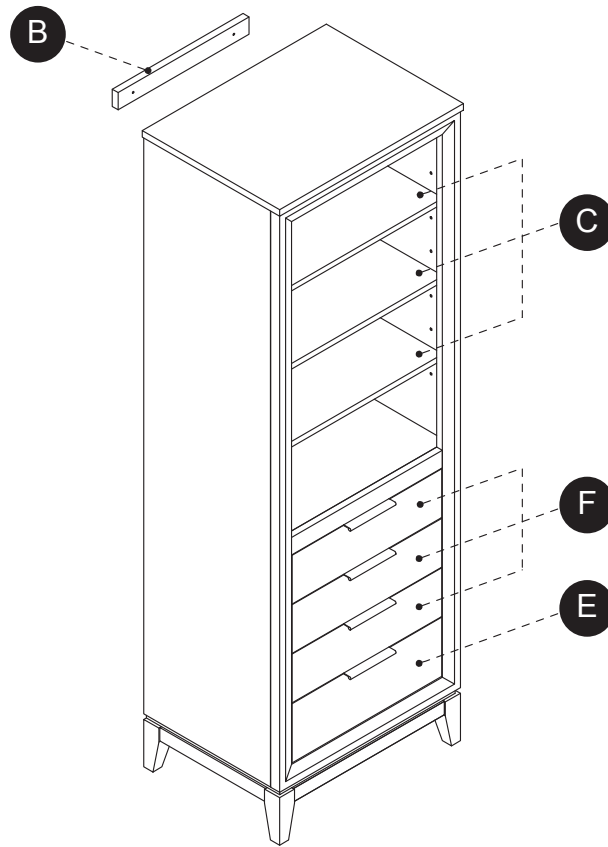
- Dust the floor cabinet regularly with a soft, non-lint producing cloth or household dusting product.
- You can clean the floor cabinet with a gentle, non-abrasive household cleaner.
- Make sure to dry the wood immediately with a soft cloth or towel.
- Tips for using touch-up pen (AA): For scratches, stroke in direction of scratch. Rub off excess colorant promptly with a soft cloth.

WARRANTY

The manufacturer warrants this item against defects in materials and workmanship for a period of one (1) year from the date of original retail purchase. This warranty applies only to the original purchaser. This warranty does not apply to any damage on the product by accident, misuse, or modified, improper installation or by affixing accessories not produced by the manufacturer. The manufacturer is not accountable whatsoever for product installation during the warranty period. There is no further expressed warranty. The manufacturer shall not be legally responsible for incidental, consequential or special damages arising at or in connection with product use or performance except as may otherwise be accorded by law. The manufacturer disclaims any and all implied warranties.

REPLACEMENT PARTS LIST FOR 1192FC-24-201

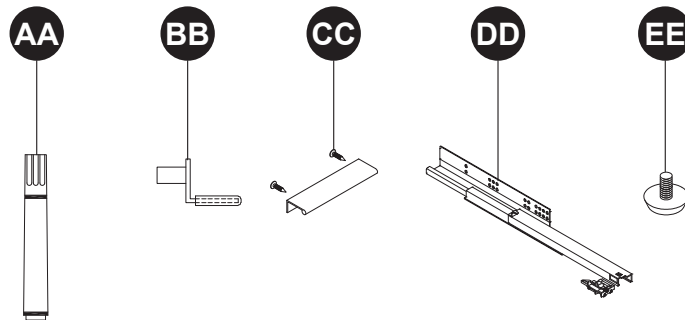
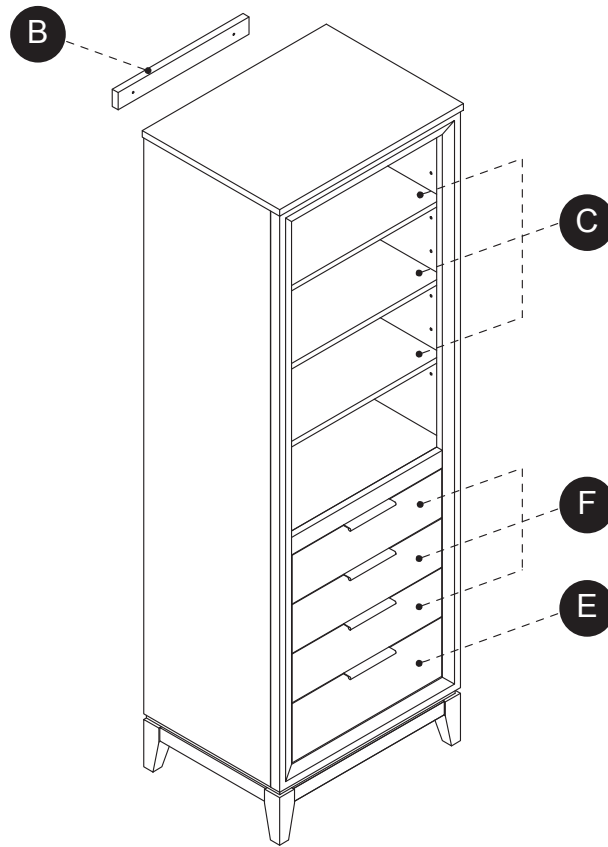
For replacement parts, call our customer service department at 1-855-571-1044, 9 a.m. - 5 p.m., EST, Monday - Friday.



PART	DESCRIPTION	PART#
B	Wall Mounting Spacer Bar	1192FC-24-201-001
C	Shelf	1192FC-24-201-002
E	Bottom Drawer Front	1192FC-24-201-003
F	Top Drawer Front	1192FC-24-201-004
AA	Touch-up pen	OF-0010
BB	Shelf pin	B1044
CC	Door Pull	PU-1192-BN
DD	Drawer Glide	PUDTC-12x3-HANDLE
EE	Leveler	T-1007

REPLACEMENT PARTS LIST FOR 1192FC-24-242

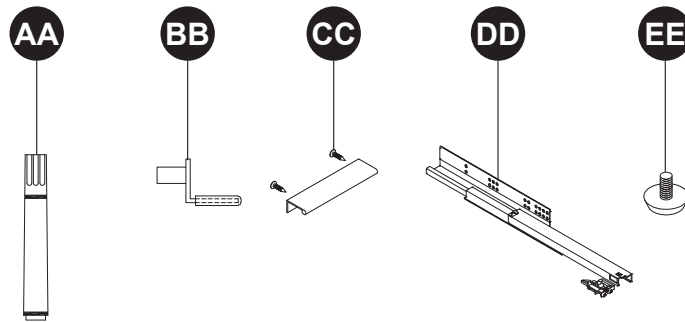
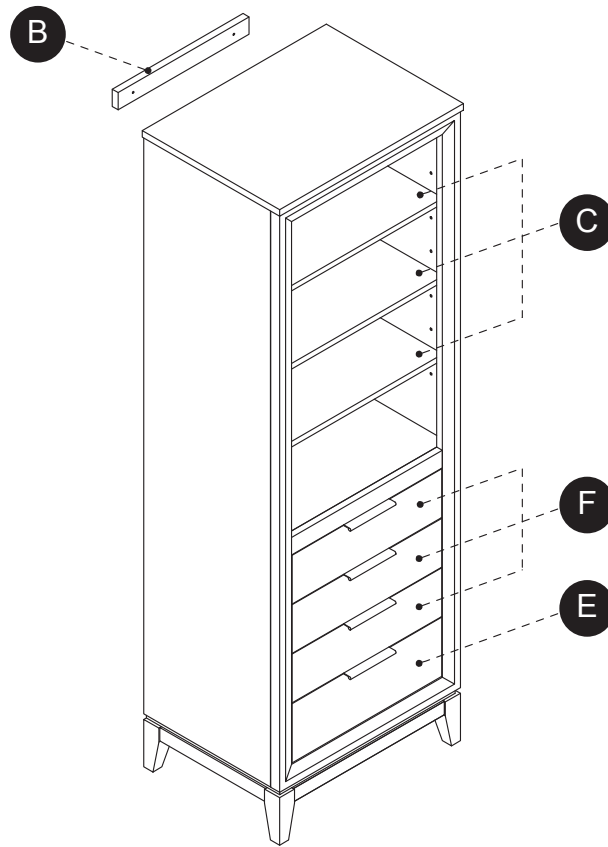
For replacement parts, call our customer service department at 1-855-571-1044, 9 a.m. - 5 p.m., EST, Monday - Friday.



PART	DESCRIPTION	PART#
B	Wall Mounting Spacer Bar	1192FC-24-242-001
C	Shelf	1192FC-24-242-002
E	Bottom Drawer Front	1192FC-24-242-003
F	Top Drawer Front	1192FC-24-242-004
AA	Touch-up pen	OF-0120R
BB	Shelf pin	B1044
CC	Door Pull	PU-1192-BN
DD	Drawer Glide	PUDTC-12x3-HANDLE
EE	Leveler	T-1007

REPLACEMENT PARTS LIST FOR 1192FC-24-245

For replacement parts, call our customer service department at 1-855-571-1044, 9 a.m. - 5 p.m., EST, Monday - Friday.



PART	DESCRIPTION	PART#
B	Wall Mounting Spacer Bar	1192FC-24-245-001
C	Shelf	1192FC-24-245-002
E	Bottom Drawer Front	1192FC-24-245-003
F	Top Drawer Front	1192FC-24-245-004
AA	Touch-up pen	OX-0940S
BB	Shelf pin	B1044
CC	Door Pull	PU-1192-BN
DD	Drawer Glide	PUDTC-12x3-HANDLE
EE	Leveler	T-1007