

INSTALLATION INSTRUCTIONS

ALLEN + ROTH BURNISHED AUTUMN MAPLE LAMINATE FLOORING
LOWE'S ITEM #79318 MODEL #367622-00209



**IMPORTANT! THIS FLOORING UTILIZES A UNIQUE LOCKING SYSTEM.
READ ALL INSTRUCTIONS THOROUGHLY BEFORE BEGINNING INSTALLATION.
IMPROPER INSTALLATION WILL DAMAGE THE FLOOR.**

PART 1: INSTALLATION PREPARATIONS AND GENERAL GUIDELINES

allen + roth™ Laminate Flooring is installed using a glueless locking mechanism. Because this is a floating floor system, laminate flooring should never be nailed or glued to the subfloor. Furthermore, the floor should not be installed against any fixed, vertical objects (including walls, staircases, fixtures, etc.).

IMPORTANT

- Allow a minimum of 5/16 inch expansion space around the perimeter of the room and any fixed objects such as posts.
- Rooms measuring wider or longer than 30 ft require the use of T-mouldings to allow for normal expansion and contraction of the floor.
- Openings less than 6 ft wide require T-moldings.
- Be sure to stagger boards by a minimum of 16 in.
- allen + roth™ Laminate Flooring should not be installed in rooms where the relative humidity exceeds 70%.

SUGGESTED TOOLS AND MATERIALS:

- 5/16 inch spacers
- Table or hand saw
- Carbide-tipped circular saw blades
- Vacuum
- Tape measure
- Duct tape
- Age-resistant, non-permeable polyethylene vapor barrier (0.008 inch) for installation over concrete
- Safety glasses
- Gloves

Safety Caution: use safety glasses and gloves when cutting this product. During the cutting process, laminate may create wood dust; be sure to install in a well-ventilated area.

GENERAL REQUIREMENTS FOR ALL TYPES OF SUBFLOORING:

allen + roth™ Laminate Flooring can be installed over most floors such as vinyl, tile and sheet floors. Substrates should be structurally sound and immobile. Before installing flooring, ensure that the subfloor is leveled within 3/16 inch in 10 ft. Irregularities in the subfloor should be smoothed using a hydraulic cement base patching and leveling compound. Suspended wood subfloors should have a minimum of 18 inches of well-ventilated air space above the ground.

Concrete:

- New concrete subflooring should be cured for at least 90 days prior to installation. (Moisture test: moisture vapor < 3 lbs/1,000 sq ft 24

hours per ASTM 1869 calcium chloride test).

- Install 0.008 inch age-resistant, non-permeable polyethylene vapor barrier over the concrete subfloor. Seams must be taped using adhesive tape such as duct tape. The vapor barrier should be installed up the wall by 1 inch.
- Sheet vinyl, tile and wood subflooring: Moisture content of the wood subfloor should not exceed 12%.

Carpeting:

- Remove deep pile carpeting and padding prior to installation of laminate flooring.
- allen + roth™ Laminate Flooring can be installed over industrial direct glue-down carpeting installed over wood subfloors without padding.
- Carpet installed over concrete must be removed. See instructions for installation over a concrete subfloor.

Radiant Heating Systems:

- allen + roth™ Laminate Flooring can be installed on under-floor radiant heating systems if the heating element is installed into wood or concrete subfloors.
- Lower heating system to 60 °F for 1 week before installation.
- After installation, slowly increase the temperature in increments of 10 °F per hour.
- Surface temperature must not exceed 85 °F.
- Follow installation instructions for wood or concrete as outlined above.

CONDITIONING:

It is important to allow allen + roth™ Laminate Flooring to acclimate to the room temperature where it is to be installed by placing the packaged flooring flat in the room for a minimum of 48 hours prior to installation. Do not remove the plastic wrapping. Be sure that the room temperature is in the range of 65-75 °F.

ROOM PREPARATION:

1. Remove all existing mouldings.
2. If room has electric baseboard heaters, leave a minimum of 1/2 inch between the surface of the flooring and the bottom of the heaters, allowing heat to circulate.
3. Check door clearances, making necessary adjustments before laying the flooring. Door mouldings (jambs) should be undercut to accommodate the thickness of the flooring and foam underlayment.
4. Determine which direction to lay the planks. If installing in narrow hallways or small rooms, the area will appear larger if flooring is laid parallel to the longest wall.

PART 2: UNDERSTANDING THE PARTS OF THE PLANK

Look closely at the plank and refer to the drawing below. Note that the plank has been milled with 2 specific types of joints which interlock to make a single flat surface. These joints are called the TONGUE and the GROOVE. It is important to note that they are not interchangeable.

The GROOVE is the slotted edge that runs the width of the plank on both the long and short edge of the plank. The GROOVE side has been milled so that the core board is clearly visible. The TONGUE is the lip that runs the width of the plank on the other long and short edge of the plank. The TONGUE side has been milled so that it protrudes outward and has a ridge which locks into the groove side.

It's very important to familiarize yourself with the proper orientation of the plank. The first row must be installed with the TONGUE SIDE AGAINST THE WALL.

Figure A: PARTS OF THE PLANK

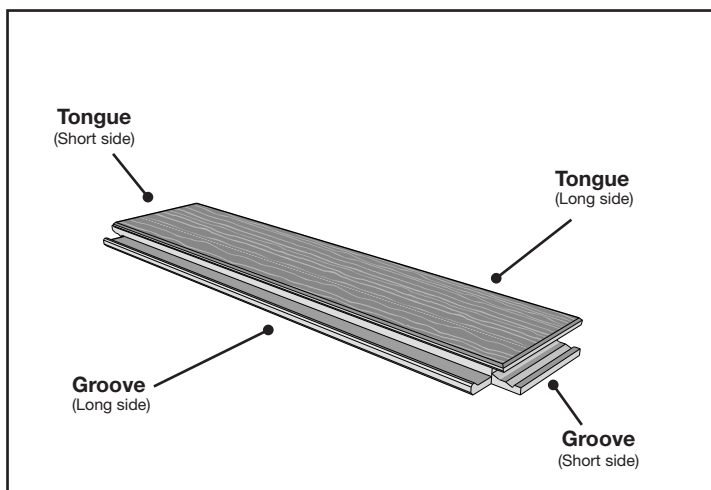
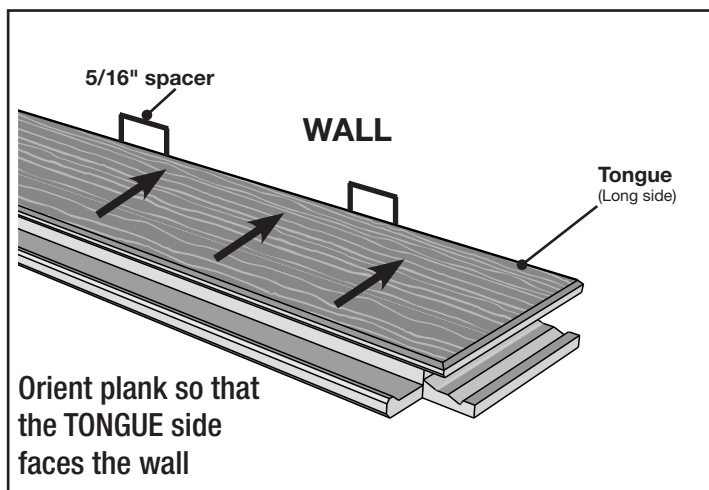


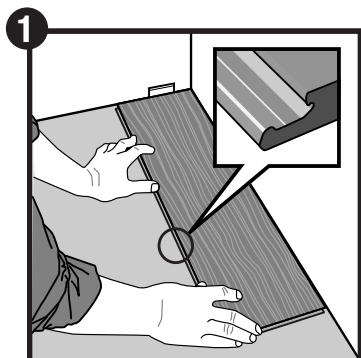
Figure B: ORIENTATION OF THE PLANK



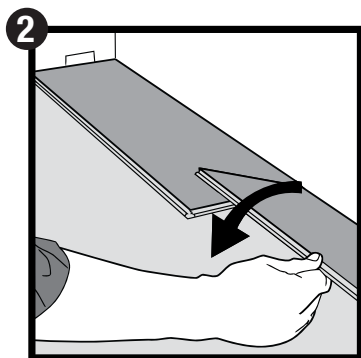
NOTE: the tongue and groove have been exaggerated in these drawings for illustrative purposes and are not to scale.

PART 3: INSTALLATION INSTRUCTIONS

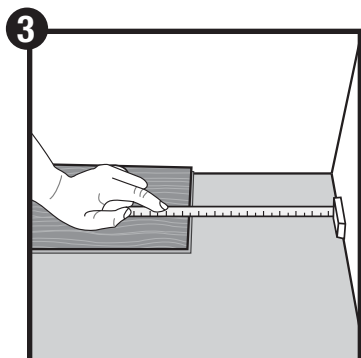
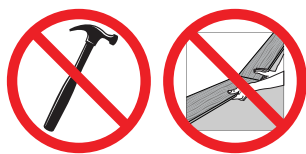
Part 1 Installing the Initial Row



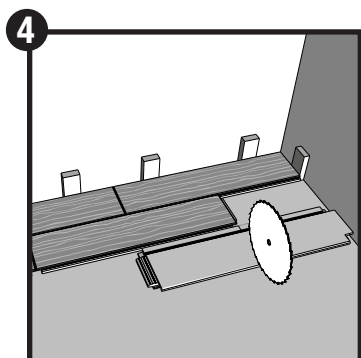
Starting in the left hand corner of a room, lay the first plank with the tongue side against the wall, placing 5/16 inch spacers between the wall and the plank on either side of the joint. Be sure to place the cut tongue side against the wall as shown in the illustration.



Place the second plank directly down, joining the two planks as shown. Do NOT try to join the planks end to end or use a hammer to tap the second plank against the first plank.



When you reach the end of a row, you will need to cut the plank to the correct size to complete the row. Measure the length required to complete the row as shown.



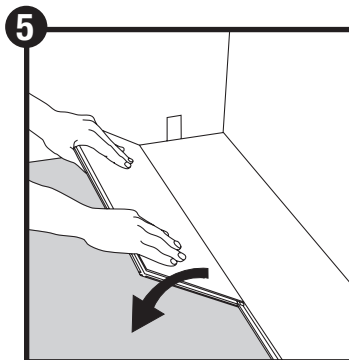
Flip a full sized plank over so that the tongue points toward the wall, with the underside of the plank facing up. This step is necessary to preserve the joint so that the plank can be properly inserted once cut. Mark where the plank should be cut, and cut with the décor side down.

Flip the cut plank back over (decor side facing up) so that the

tongue faces the groove of the adjacent plank; install by angling the long side and dropping the short side into position.

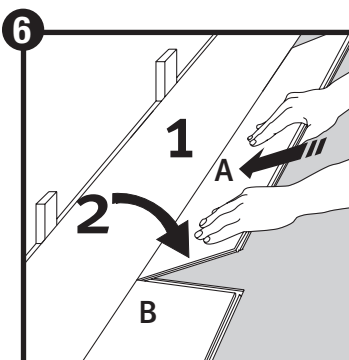
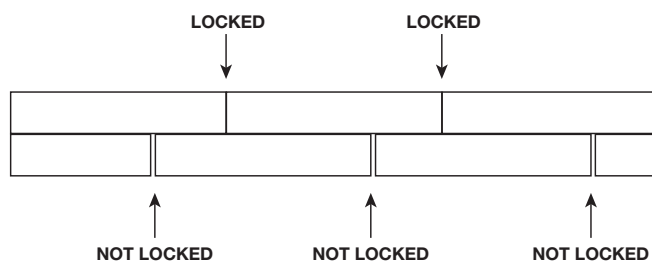
Part 2 Installing the Remaining Rows

As you lay the planks in the first row, you will notice the planks do not completely lock together along the short side of the plank. This is because the planks don't lock until the next row is installed. Follow the next two steps carefully as you install the remainder of your flooring.



You may use the remainder of the previous plank to start the second row **if it is at least 16 inches long.** Begin installing the second row by angling the plank to allow the tongue to slip into the groove of the plank in row 1. Push the plank down flat to the floor until it clicks into place. Do not force the plank closed as doing so can damage the joint.

Installing the next row locks the short joints of the preceding row.



Place the floorboard tight to the short end of the floorboard you are fitting the plank into.

Then fold down with a single action movement. Make sure the long sides of the planks make a straight line. Complete each row in the same way. **Remember to stagger the end joints by 16 inches.**

NOTE: After installing the first few rows, the planks may still appear to be lifted or not laying flat on the floor. As you proceed with the installation the weight of the floor will allow it to settle and lay flat.

PART 4: FINAL INSTALLATION INSTRUCTIONS

In difficult to fit areas, such as door mouldings, remove the lip on the groove edge of the planks you are fitting into. This can be done by lightly sanding or planing off the lip of the plank, allowing the plank to be installed laying flat. Once the lip has been trimmed on the plank being fitted to, lay the plank down flat on the floor. Apply a thin bead of PVAc-D3 laminate glue on the top of the tongue. Then push the plank into position. Once the plank is positioned, wipe off excess glue with a damp cloth and warm water.

Remove the spacers placed along the perimeter of the room and cover the expansion space with the appropriate moulding. Be sure to fasten the moulding into the wall, not through the flooring. Quarter-rounds should be pre-drilled before nailing them to the wall.

Felt protection pads should be placed under furniture legs or other heavy objects to be left in place for an extended period of time. Do not drag or pull heavy furniture, as doing so will damage the floor.

PART 5: CLEANING AND CARE

Vacuum regularly. Vacuum using a soft bristle brush attachment. Do NOT use vacuums with beater bars as doing so can damage your floor.

Lightly Damp Mop. Laminate floors may be lightly damp mopped when needed. Avoid standing water as it may cause the joints between the planks to lift. DO NOT use a steam cleaners, jet mops or any mop that sprays liquid directly onto the floor. Apply cleaning solution formulated for laminate flooring to a cloth or mop, not directly to the floor. Clean floor in the same direction as the planks.

Use Floor Protectors on Furniture. Furniture legs can scratch your floors. Any furniture that rests directly on top of a laminate floor should have floor protectors or wide furniture coasters under all feet. Placement of mats at all outside entrances and heavy traffic areas is recommended.

Do not use Oil Soaps or Wax-based Cleaning Products. These products will leave a dull finish on your floor. Use a floor cleaner specifically formulated for cleaning laminate flooring.

Trim Pets' Claws. Pets' claws may scratch the surface if they are not trimmed regularly.

Wipe Spills Immediately. When liquids are spilled on your laminate flooring, use a slightly damp white cloth or paper towel to immediately blot up and dry the affected area.

Questions?

Contact customer service at 1-866-439-9800