



INSTALLATION MANUAL

## **Seda™ 8" Widespread 2-Handle Faucet**

FUS-1823

## Thank you for your purchase

We would like to take this opportunity to thank you for choosing Kraus. We hope that you are completely satisfied with your purchase, and enjoy it for years to come. If you have any questions, or require technical assistance, please contact us at 800.775.0703 and one of our representatives will be happy to help.

For more information about Kraus products, please visit:

**[www.kraususa.com](http://www.kraususa.com)**

In order to activate your warranty and get faster access to customer support, please register your new Kraus product at:

**[www.kraususa.com/registration](http://www.kraususa.com/registration)**

*Sincerely,*

*Kraus USA Customer Service*

## Prior to Installation:

- Make sure you have all necessary parts by checking the diagram and parts list. If any part is missing or damaged, please contact Kraus Customer Service at 800-775-0703 for a replacement
- Turn off the hot and cold water supply at the angle stops and turn on the old faucet to release any built up pressure. Remove existing faucet. Clean sink or countertop to remove any debris, plumber's putty, or silicone
- Place bucket under angle stops. Turn on angle stops to flush any debris prior to installing new plumbing. Shut off angle stops
- Max countertop thickness: 1 3/8"

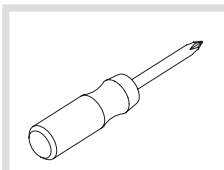
**For technical assistance or replacement parts, please contact Kraus Customer Service and one of our representatives will be happy to help:**

Toll-Free: 800-775-0703 or [Customerservice@kraususa.com](mailto:Customerservice@kraususa.com)

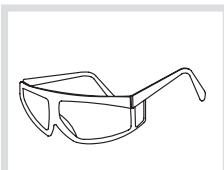
## Tools you will need:



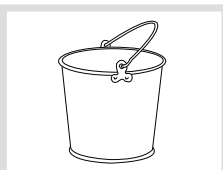
**Adjustable Wrench**



**Phillips Screwdriver**

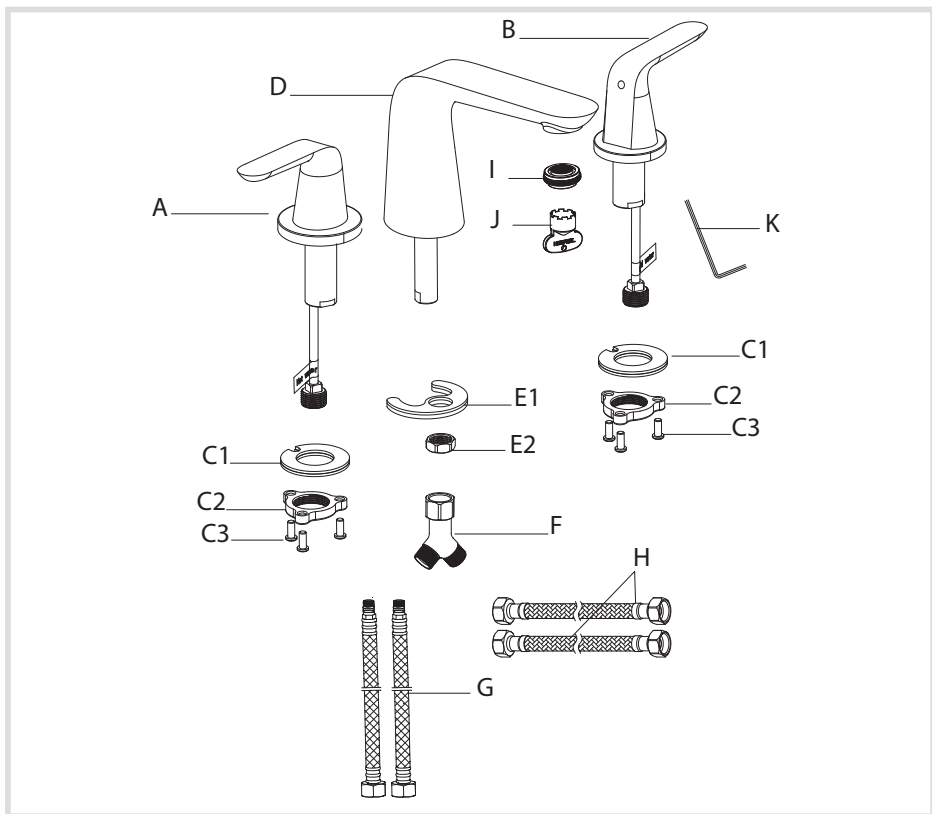


**Safety Goggles**



**Bucket**

## FUS-1823 Diagram and Parts List



A. Hot Handle Valve

B. Cold Handle Valve

C. Hot & Cold Handle Mounting Hardware:

C1. Rubber & Metal Washer

C2. Mounting Nut

C3. Mounting Screws

D. Spout

E. Spout Mounting Hardware:

E1. Rubber & Metal U-Washer

E2. Mounting Nut

F. T-Union

G. Hot & Cold Waterlines

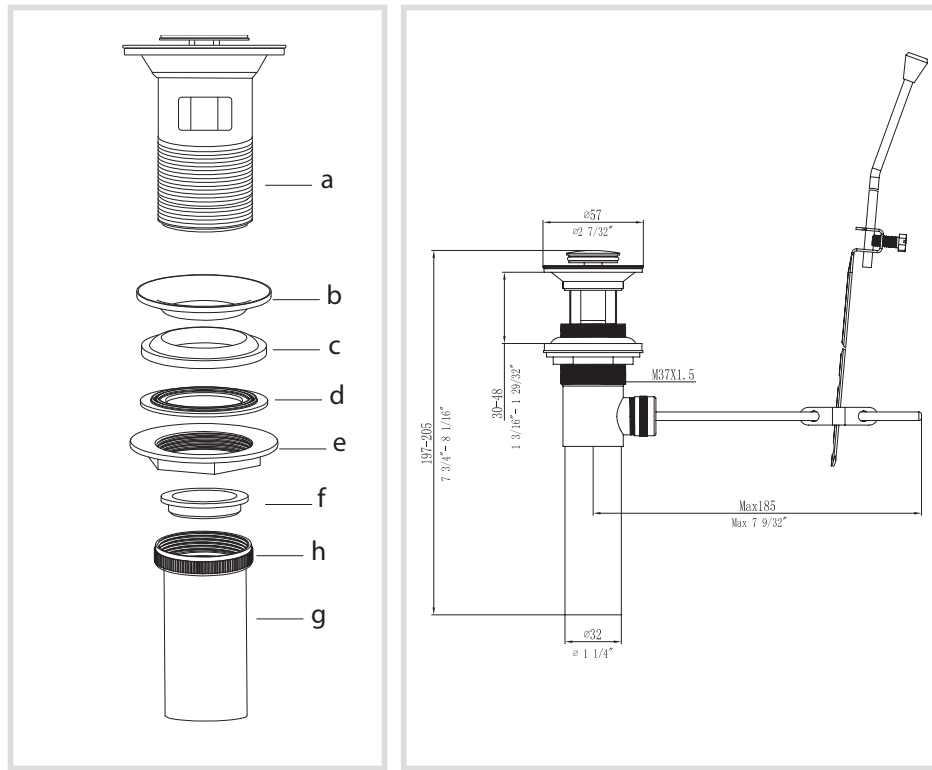
H. 3/8 in. OD x 1/2 in. IPS Waterlines

I. Aerator

J. Aerator Key

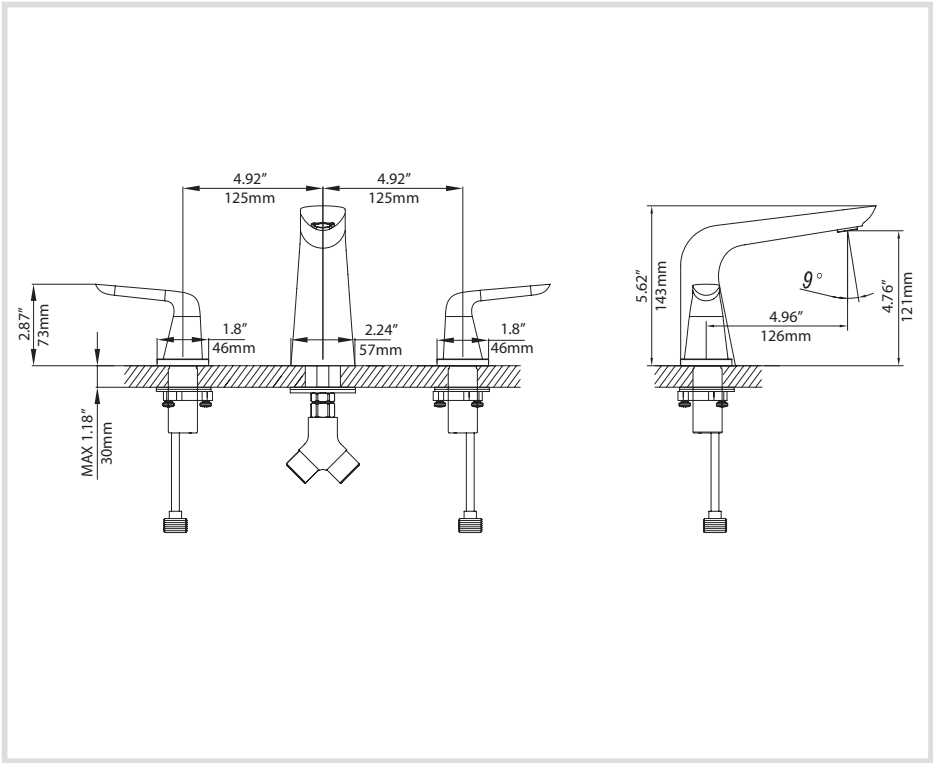
K. Hex Wrench

## Lift Rod Drain Diagram and Parts List and Dimensions

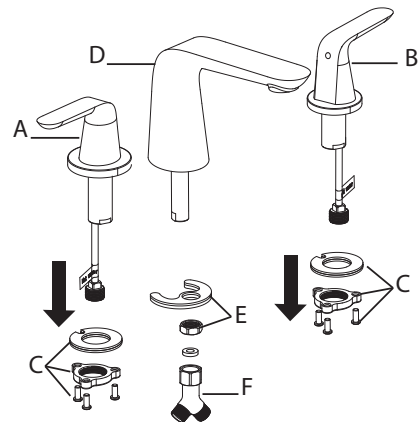


- a. Waste Stopper
- b. Drain
- c. Rubber Washer
- d. Concave Washer
- e. Plastic Washer
- f. Mounting Nut
- g. Tailpipe Washer
- h. Tailpipe
- i. Top Hat Washer
- j. Drain Off Pole
- k. Washer
- l. Retaining Nut
- m. Extender Rod
- n. Clip
- o. Thumb Screw
- p. Lift Pole

# Faucet Dimensions

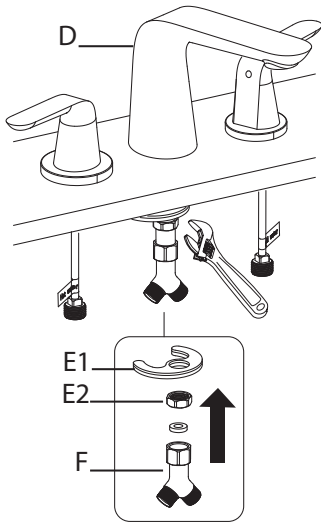


## Step 1: Remove mounting hardware and T-union



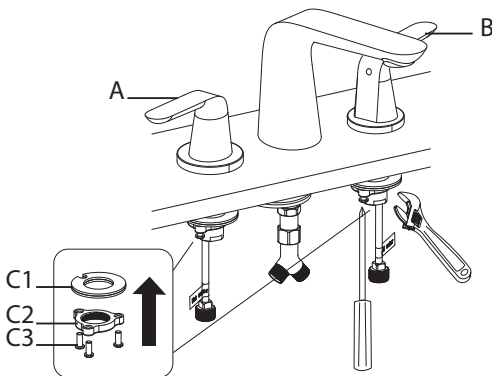
Remove T-union (F) and mounting hardware (E) from spout (D).  
Remove mounting hardware (C) from hot and cold handle valves (A & B)

## Step 2: Install & secure spout



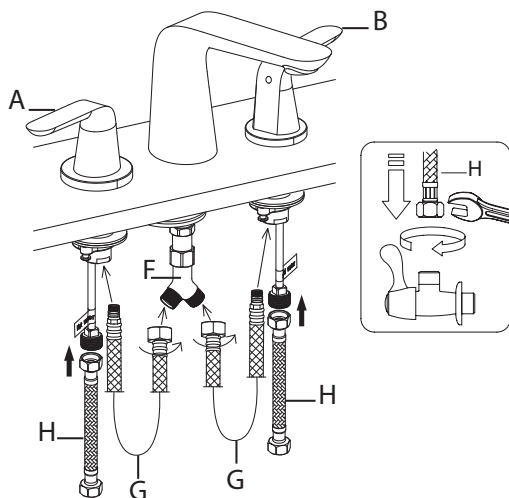
Install spout (D) through hole in countertop or sink. Attach rubber & metal U-washer (E1) and mounting nut (E2). Adjust spout (D) to proper position and tighten mounting nut (E2) with adjustable wrench. Secure T-union (F) onto supply line of spout (D). Tighten T-union (F) with adjustable wrench

## Step 3: Install & secure hot and cold handle valves



Install hot and cold handle valves (A & B) through hole in countertop or sink. Attach rubber & metal washer (C1) and mounting nut (C2) to the threaded mounting pipe. From underneath the countertop or sink, tighten mounting nut (C2) onto valves (A & B) with adjustable wrench until snug. Secure mounting nut (C2) by tightening mounting screws (C3) with a Phillips head screwdriver

## Step 4: Connect waterlines to faucet and main valve



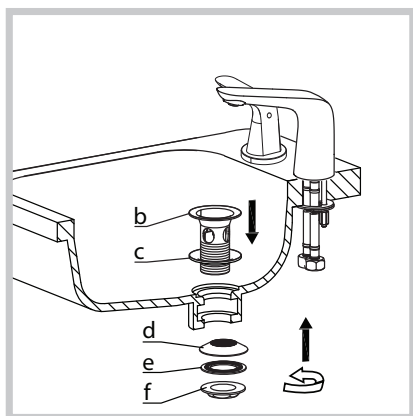
Secure hot & cold waterlines (G) to hot and cold valves (A & B) (Hand-Tighten Only). Thread other end of waterlines to T-union (F). Attach 3/8 in. OD x 1/2 in. IPS waterlines (H) to copper pipe on valves

A. Hot Side: Left

B. Cold Side: Right

Secure other end of waterlines to angle stops. Tighten all ends with adjustable wrench until snug. Turn on angle stops and check for leaks (DO NOT TURN FAUCET ON)

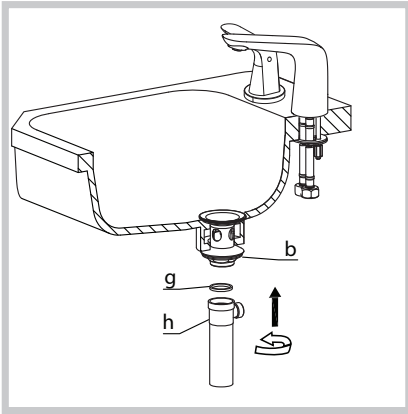
## Step 5: Install Drain



- Install drain (b), with rubber washer (c) attached, into the drain hole. Attach concave washer (d) with narrow end up, plastic washer (e), and mounting nut (f) to drain (b) from underneath countertop or sink. Secure tightly to sink with an adjustable wrench

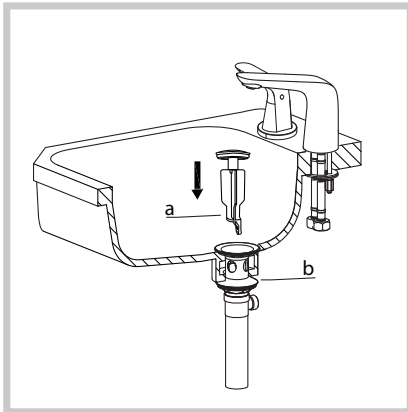


## Step 5: Install Drain

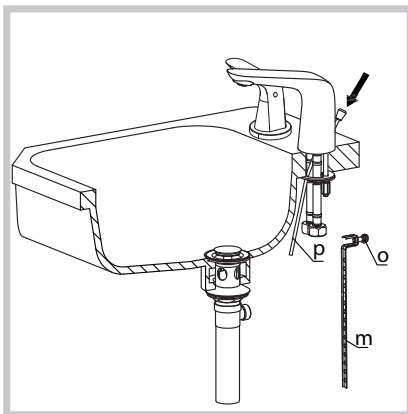


- Thread tailpipe (h) onto drain (b) and hand-tighten. Adjust tailpipe (h) so drain off pole opening is to the rear of the sink

**Installer Tip:** Make sure tailpipe washer (g) is installed in tailpipe (h)

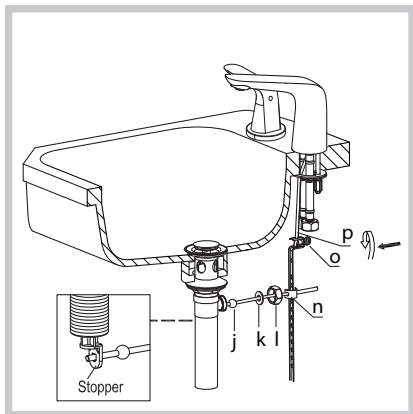


- Insert waste stopper (a) into drain (b). Make sure slot at end of waste stopper (a) is facing the rear of the sink

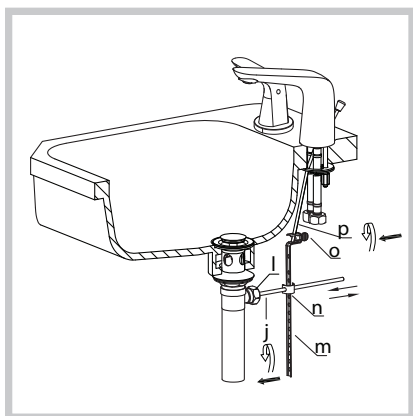


- Insert lift pole rod (p) through the hole in the back of the faucet body. Loosen thumb screw (o) and attach extender rod (m) to lift pole rod (p). Tighten thumb screw (o)

## Step 5: Install Drain



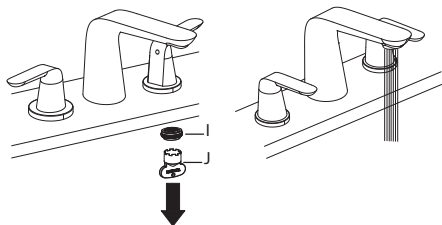
- Insert shortest end of drain off pole (j) into drain off pole opening of tailpipe (h). Make sure drain off pole (j) and slot on waste stopper (a) engage. Attach washer (k) and retaining nut (l) through drain off pole (j). Secure retaining nut (l) to drain off pole opening of tailpipe (h)



- Place one end of clip (n) on drain off pole (j). Insert drain off pole (j) through desired hole of extender rod (m). Place other end of clip (n) on drain off pole (j)

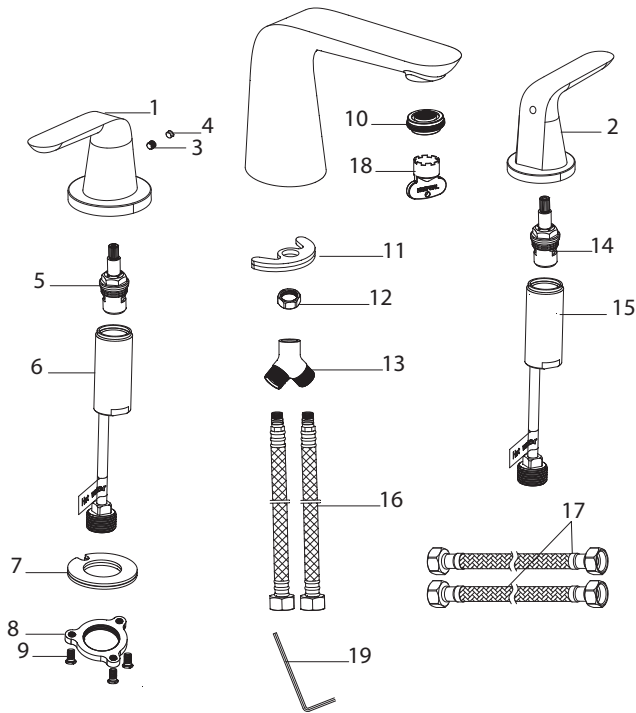
**Installer Tip:** You may adjust the extender rod (m) to a desired height

## Step 6: Flush faucet



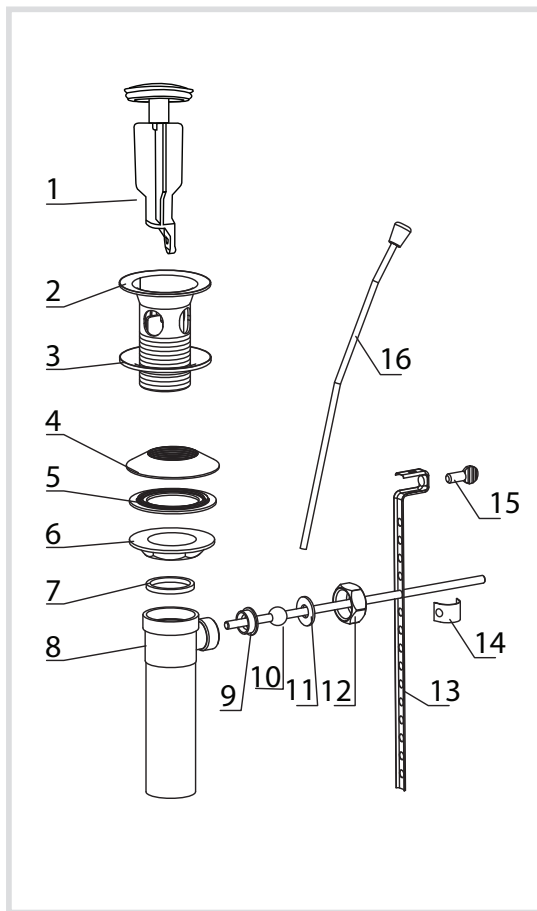
Remove adjustable aerator (l) with aerator key (j). Turn water on for 1 minute to remove any debris. Reassemble aerator (l) and adjust to desired position

## Replacement Part List - FVS-1823



- |                          |   |
|--------------------------|---|
| 1. Hot Handle            | 11. Rubber & Metal U Washer             |
| 2. Cold Handle           | 12. Mounting Nut                        |
| 3. Set Screw             | 13. T-Union                             |
| 4. Cover Button          | 14. Cold Cartridge                      |
| 5. Hot Cartridge         | 15. Cold Valve                          |
| 6. Hot Valve             | 16. Hot & Cold Waterlines               |
| 7. Rubber & Metal Washer | 17. 3/8 in. OD x 1/2 in. IPS Waterlines |
| 8. Mounting Nut          | 18. Aerator Key                         |
| 9. Mounting Screw        | 19. Hex Wrench                          |
| 10. Adjustable Aerator   |   |

## Replacement Part List - Lift Rod Drain



1. Waste Stopper
2. Drain
3. Rubber Washer
4. Concave Washer
5. Plastic Washer
6. Mounting Nut
7. Tailpipe Washer
8. Tailpipe
9. Top Hat Washer
10. Drain Off Pole
11. Washer
12. Retaining Nut
13. Extender Rod
14. Clip
15. Thumb Screw
16. Lift Pole Rod

## Trouble - Shooting

If you have followed the instructions carefully and your faucet still does not work properly, take the following corrective steps:

PROBLEM	CAUSE	ACTION
Leakage under the handle	Hot or cold cartridge (5 or 14) may be loose	Remove cover button (4). Loosen set screw (3) with hex wrench (19). Remove handle (1 or 2). Tighten hot or cold cartridge (5 or 14) with adjustable wrench
Aerator drips or has inconsistent water flow pattern	Aerator (10) may be dirty or not seated properly	Unscrew aerator (10) with aerator key (18). Remove aerator (10) and clean out debris
Water will not shut off completely	Hot or cold cartridge (5 or 14) may need to be adjusted or replaced	Remove cover button (4). Loosen set screw (3) with hex wrench (19). Remove handle (1 or 2). Remove hot or cold cartridge (5 or 14) with adjustable wrench. Check for cracks
Drain is leaking	Washers may be compromised or installed incorrectly	Check washers to make sure they are installed correctly and not cracked

## Codes/Standards Applicable:



## HELP LINE

---

Our customer service hours are Monday – Friday, 9am – 8pm EST.  
Be sure to visit our website at [www.kraususa.com](http://www.kraususa.com)

### **If you are a homeowner please contact a Kraus Customer Service Representative at:**

Kraus USA, Inc.  
12 Harbor Park Drive  
Port Washington, NY 11050  
Toll-free 800-775-0703  
[Customerservice@kraususa.com](mailto:Customerservice@kraususa.com)

### **If you are a plumbing contractor or trade professional please contact a Kraus Pro Representative at:**

Kraus USA, Inc.  
12 Harbor Park Drive  
Port Washington, NY 11050  
516-801-8955  
[Proservice@kraususa.com](mailto:Proservice@kraususa.com)

### **If you are an Authorized Partner please contact a Partner Support Representative at:**

Kraus USA, Inc.  
12 Harbor Park Drive  
Port Washington, NY 11050  
516-801-8954  
[Partnersupport@kraususa.com](mailto:Partnersupport@kraususa.com)

### **In requesting warranty service, please be ready to provide:**

1. Proof of purchase.
2. A description of the problem.

# Care & Maintenance

\*To keep the product clean & shining, follow the steps below:

1. Rinse with clean water & dry with a soft cloth
2. Do not clean with soaps, acid, polish, abrasives, or harsh cleaners
3. Do not use cloth with a coarse surface
4. Unscrew the aerator and clean when necessary



\*This installation manual is subject to change without further notice.

**Download the Kraus Care & Maintenance Guide at:**

<http://www.kraususa.com/care-and-maintenance.html>

**Kräus®**

[www.kraususa.com](http://www.kraususa.com)

## REGISTER YOUR PRODUCT TODAY

**Receive** Proof of Ownership

**Access** Customer Care & Installation Help

**Get** Exclusive Kraus Offers & Promotions



Scan to Register Online  
or visit <http://www.kraususa.com/registration>

**We're always looking for ways to improve.**

Please take a moment to share your experience.  
Visit <http://www.kraususa.com/review> to let us know what you think  
about your new Kraus product.

Contact Us to Learn More  
1.800.775.0703 / [www.kraususa.com](http://www.kraususa.com) / [customerservice@kraususa.com](mailto:customerservice@kraususa.com)  
Like & Follow KrausUSA

Download the Kraus Care & Maintenance Guide at:  
<http://www.kraususa.com/maintenance>



**Kräus®**

[www.kraususa.com](http://www.kraususa.com)