



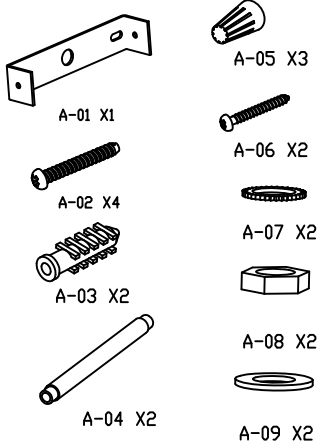
Notes:

1. The lamp should be installed in a minimum distance of 18 inches from any combustible material, to prevent the occurrence of fire hazard
  2. Key parts of the heating will cause burns
  3. Use a clean cloth or gloves when installing.
- Technical specification

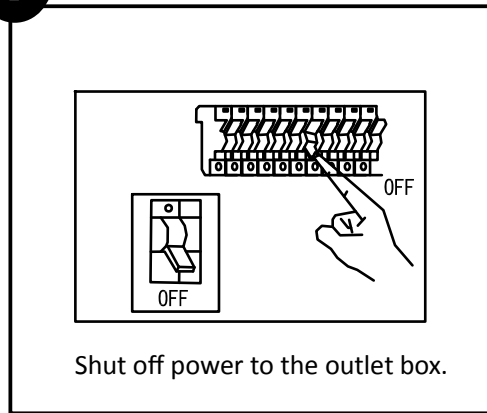
---LED driver: 1 00-240 V ~ 60Hz, 40W , 0.4-0.3A  
 Light source: LED (0.156w\*256pcs leds)  
 Power: 40w  
 Maintenance:  
 Disconnect the power supply, clean the fixture and accessories.  
 Inspect the drive inside and keep it dry  
 Regular connection

Installation steps

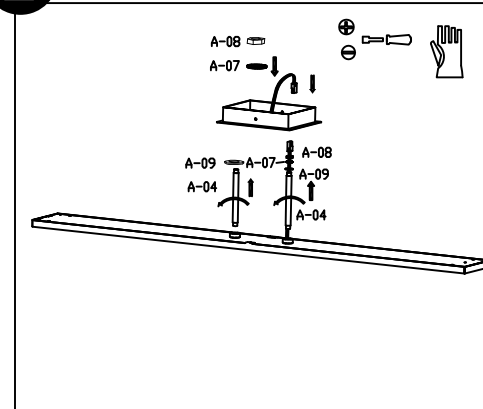
Accessories



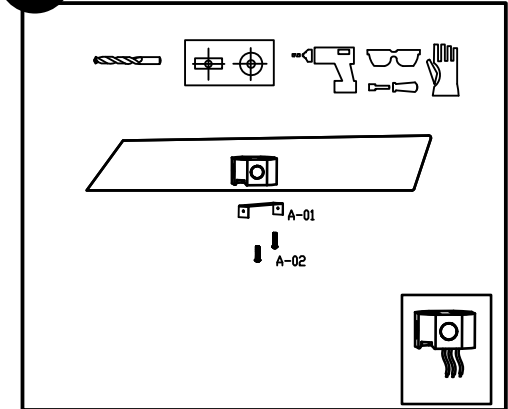
**1** Cable Mount Installation



**2** Ceiling Mount Installation

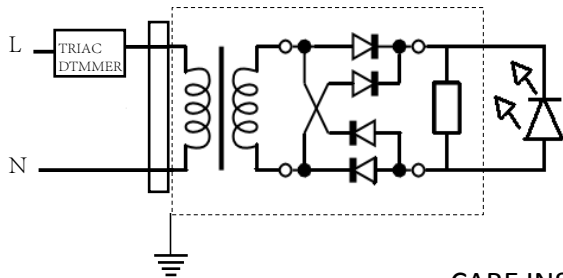


**3** Ceiling Mount Installation



Circuit diagram

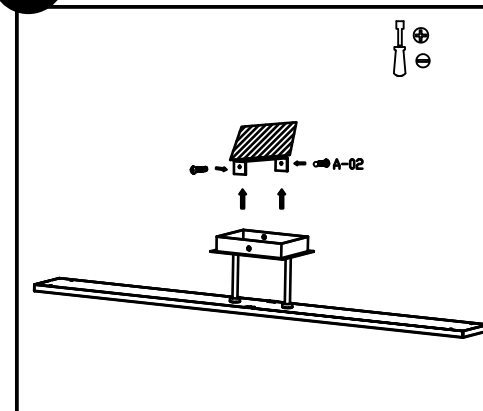
LED DE 40 W (0.156W x 256)



CARE INSTRUCTIONS

Dusting — Use a clean, dry cloth.  
 Cleaning — To protect the finish, avoid any harsh abrasives or chemicals.

**4** Connecting the lights



**A** Connecting the lights

