



Need Help?



888-399-2880

or email EZ@EzShelf.com

REACH IN CLOSET INSTRUCTIONS

Included Plastic Parts

Tube Receivers – 5 Left & 5 Right	5 Center Supports	4 End Brackets – optional use
 left shown		

For EZ Installation, **Read Instructions & WATCH installation videos BEFORE** beginning installation.

Installation videos: www.ezshelf.com/videos



1 Shelf & Rod Unit Joined with 1 Shelf Unit with included Shelf & Rod End Bracket EZ-EB-SCRW

Shelf Unit Mounted to Side Wall & Back Wall with included 1 Shelf End Bracket EZS-EB-SW

This Photo shows **EZS-K-WRI White Reach in Closet Kit** which includes **1 Closet Shelf & Rod unit (40" - 73")**, **1 Closet Shelf & Rod unit (28" - 48")**, **3 Shelf Units (each 28" - 48")** & **3 End Brackets (1-EZS-EB-SCRW, and 2-EZS-EB-SW)**.

This can also be configured with the shelves on the left side.

Other layouts are possible depending upon closet measurements & your requirements. Please call or email for design or installation assistance.

1) Measure each wall of closet before beginning and design your closet space(s).

2) Read Instructions & Watch 2 Minute Videos

The above picture has the following configuration:

Top Shelf & Rod - 1 Shelf and Rod Unit (40 – 73") – EZS-SCRW72

Bottom Shelf & Rod & Shelf – 1 Shelf & Rod Unit (28 – 48" – EZS-SCRW48) joined with 1 Shelf Unit (28 – 48" EZS-SW48) and 1 included End Bracket EZS-SW

2 Additional Shelves (28-48" EZS-SW48) and 2 included Shelf End Brackets (EZS-EB-SW)

Shelf units are mounted to a side wall and End Brackets are used for mounting the other side to the Back Wall.

Installation Instructions for Shelf & Rod Unit mounted to 2 Side Walls (like the side of a closet).
If beginning with an End Bracket, skip to step #15.

Mounting Tube Receiver to Sidewall

1. **Measure & Mark Sidewall from floor up**

Suggested Shelf Heights: **Single Hanging:** 60" - 80" from floor to top of shelf.

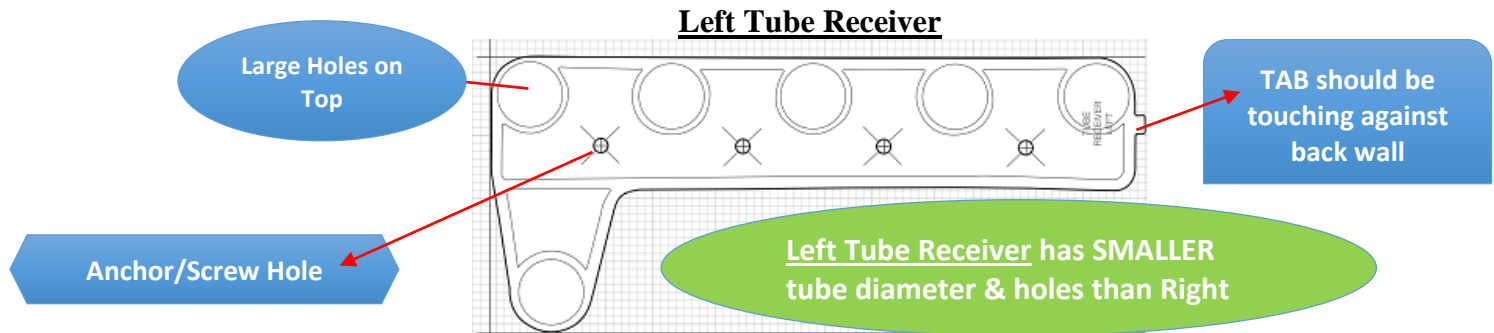
Double Hanging: 80" - 84" from floor to top shelf & rod & 40" - 42" for bottom shelf & rod.

2. **Tape Tube Receiver Template to sidewall** – **Must be Level.** There is a left and right template.

3. **Mark Four Screw Holes with Pencil.**

Note: Tube Receiver Installation: Determine if you need left or right Tube Receiver.

Large Holes MUST be on Top & Small, Protruding TAB MUST touch back wall (see below).



4. **CHECK FOR STUDS**

Push nail/screw into drywall-If it doesn't go all the way in you may be hitting a stud or other object.

5. **Drywall Anchor Instructions**

Drill/poke a small hole into wall.

Push TIP ONLY of Anchor into drywall & Screw in plastic anchors (see drywall anchor pictures below).

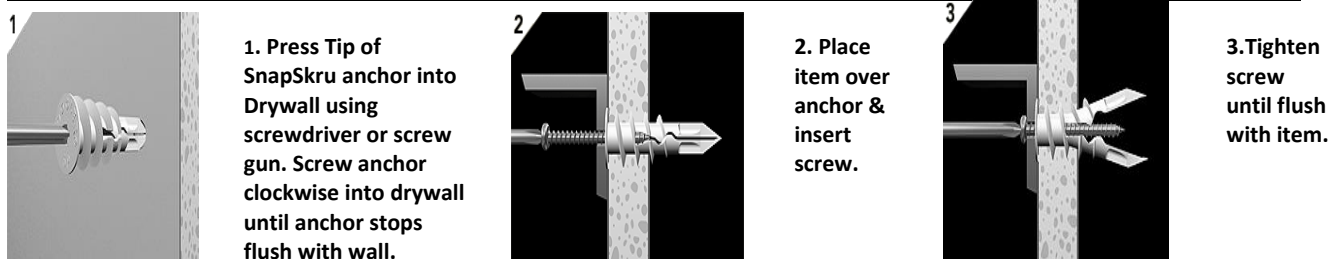
Use screwdriver/electric drill (**on LOW setting – do NOT over tighten**).

Note: EZ Shelf will hold 200 lbs. WITHOUT securing to studs.

Do NOT use included anchors when:

- **You HIT A STUD:** Drill "pilot" hole into stud & attach included screw directly to stud.
- **PLASTER WALLS:** Drill "pilot" hole - Use plastic or lead anchors & appropriate screws.
- **CONCRETE WALLS:** Drill "pilot" hole (may need hammer drill) - Use concrete anchors/screws.

Drywall Anchor & Screw Installation Diagrams (see ezshelf.com/videos for more information):



6. **Insert Back Tube (closest to back wall) into installed Tube Receiver** (use hammer or mallet if necessary).

7. **Attach Back Tube to other Tube Receiver and Extend to opposite sidewall.**

8. **Place Level on Back Tube & then also on Tube Receiver**

Must be level - Mark Holes on wall with pencil.

9. **Attach Tube Receiver to Wall** (Repeat Steps 4 and 5 above from page 1)

10. **Insert all other Tubes (5) into both Tube Receivers.**

11. Twist both ends of tubes until fully secured.

12. **Place Center Support so the tubes rest in the slots** (*preferably thicker part of tubes*). **To make sure Center Support contacts ALL Tubes - Push center support UP from Bottom. Then Mark Holes on Back Wall.**



Note: DO NOT
rest Center
Support on
tube extension
sleeves.

13. **Attach Center Support using anchors and screws** (see steps 4-5 on page 1).

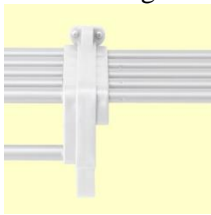
Corner Installation – see “Using end Brackets” below

Extend one shelf all the way to the wall, and mount an end bracket next to the first shelf to begin your second shelf.



For longer walls see “Using end Brackets” below

Walls in excess of 73” must join 2 units together using an end bracket. Two shelves can be attached to each other by snapping a right Tube Bracket into one side of an End Bracket and a left Tube Bracket into the other side of the same End Bracket and securing with included nuts/bolts.



Using End Brackets

End Brackets are used any time:

- a. Two units are joined together for longer units
 - b. Two units meet at a corner
 - c. Ending a unit without a sidewall (side of the closet)
-
1. Snap Tube Receiver into appropriate side of End Bracket. Hold End Bracket up to wall to ensure that the correct Tube Receiver is snapped in and the shelf will extend in the correct direction. If joining units together, snap 1 tube receiver into each side of the End Bracket.
 2. Place Bolts into the outside of End Bracket. If joining two units together, it does not matter which way the bolt is popped in.
 3. Thread nuts on the bolts and turn them a few times with your fingers. Tighten nuts & bolts with a manual or electric screwdriver until snug.
 4. Measure from floor and tape the End Bracket template to the back wall. Check that shelf will be level and mark holes with a pencil.
 5. Attach End Bracket to back wall with anchors and screws – see steps 4-5 for reference.
 6. Follow steps 4-13 on page 1 and page 2

Optional Shelf Top Assembly – See Below Pictures:

White – EZS-ST-W (6 pieces for up to 73" Shelf), Silver EZS-ST-S (6 pieces for up to 73" Shelf),

1. After EZ Shelf unit has been installed, the shelf top will easily snap onto the middle tube of the unit.
2. Push shelf top pieces together for continuous look.
3. If needed, shelf top will break along the lines to fit the shelf needed.
4. A usable unit of shelf top must have at least three pieces.
5. Shelf top will snap over tube extension sleeve, but many customers choose not to use the shelf top on that part of the shelf.

